

WELL LOCATION PLAT

T3S, R64W, 6th P.M.

1994 Private Alum.
Cap. 1.0' Below Ground
Lot: 39.752805"
Long: 104.508031"

N88°41'03"W - 2670.34' (Meas.)

N88°40'59"W - 2668.78' (Meas.)

R 6463
T3S

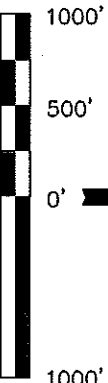
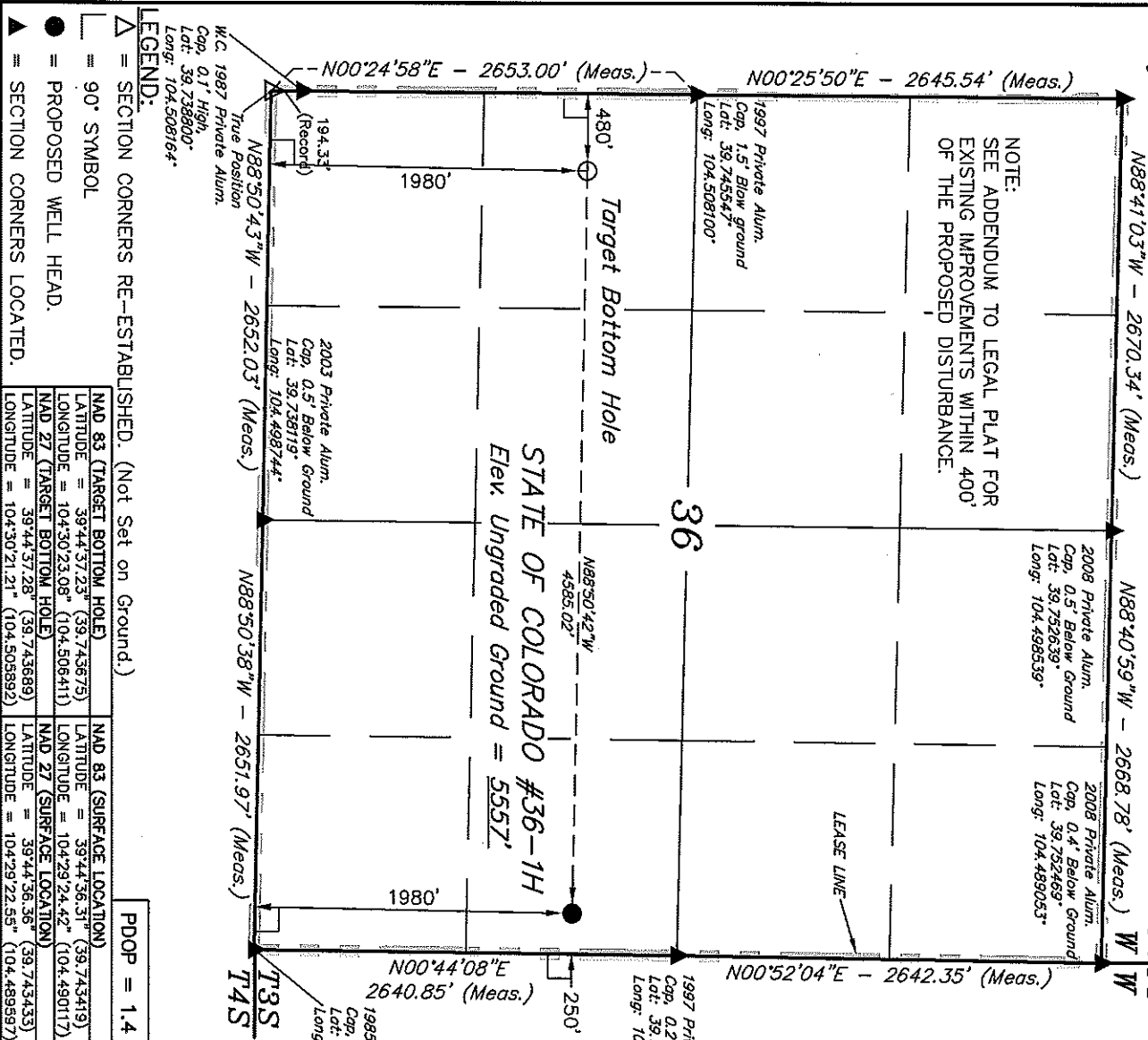
Well location, STATE OF COLORADO #36-1H,
located as shown in the NE 1/4 SE 1/4 of
Section 36, T3S, R64W, 6th P.M., Adams County,
Colorado.

BASIS OF ELEVATION

BENCHMARK 374 LOCATED ON THE SECTION LINE BETWEEN
SECTIONS 12 & 13, T5S, R64W, 6th. P.M., TAKEN FROM 1988
PUBLISHED DATUM BY THE UNITED STATES DEPARTMENT OF
THE INTERIOR, GEOLOGICAL SURVEY AS BEING 6054.61 FEET.

BASIS OF BEARINGS

BASIS OF BEARINGS IS A G.P.S. OBSERVATION.



SCALE

CERTIFICATE

THIS IS TO CERTIFY THAT THE ABOVE PLAT WAS PREPARED FROM
FIELD NOTES OF ACTUAL SURVEYS MADE BY ME OR UNDER MY
SUPERVISION AND THAT THE SAME ARE TRUE AND CORRECT TO THE
BEST OF MY KNOWLEDGE AND BELIEF.

REGISTERED LAND SURVEYOR
RECEIVED
STATE OF COLORADO
09-11-12

REVISED: 07-11-12

UNTAR ENGINEERING & LAND SURVEYING
85 SOUTH 200 EAST - VERNAL, UTAH 84078
(435) 789-1017

LEGEND:

Δ = SECTION CORNERS RE-ESTABLISHED. (Not Set on Ground.)

— = 90° SYMBOL

● = PROPOSED WELL HEAD.

▲ = SECTION CORNERS LOCATED.

PDOP = 1.4

SCALE
1" = 1000'

DATE SURVEYED:
06-20-12

DATE DRAWN:
06-27-12

PARTY

J.H. C.M. J.W.

REFERENCES

G.L.O. PLAT

WEATHER

HOT

FILE

CONOCO PHILLIPS COMPANY

SECTION BREAKDOWN T3S, R64W, 6th P.M.

1994 Private Alum.
Cap. 1.0' Below Ground
Lat: 39.752805°
Long: 104.508031°

2008 Private Alum.
Cap. 0.5' Below Ground
Lat: 39.752639°
Long: 104.498539°

R
6463
W

Well location, STATE OF COLORADO #36-1H,
located as shown in the NW 1/4 SE 1/4 of
Section 36, T3S, R64W, 6th P.M., Adams County,
Colorado.

BASIS OF ELEVATION

BENCHMARK 374 LOCATED ON THE SECTION LINE BETWEEN
SECTIONS 12 & 13, T5S, R64W, 6th. P.M., TAKEN FROM 1988
PUBLISHED DATUM BY THE UNITED STATES DEPARTMENT OF
THE INTERIOR, GEOLOGICAL SURVEY AS BEING 605.4-61 FEET.

BASIS OF BEARINGS

BASIS OF BEARINGS IS A G.P.S. OBSERVATION.

ACREAGES		
LEASE	OWNER	ACRES
A	STATE OF COLORADO	646.0
TOTAL GROSS ACRES		646.0

1997 Private Brass
Cap. 0.2' Below Ground
Lat: 39.745219°
Long: 104.489197°



CERTIFICATE

THIS IS TO CERTIFY THAT THE ABOVE PLATS WERE PREPARED FROM
FIELD NOTES OF ACTUAL SURVEYS MADE BY ME OR UNDER MY
SUPERVISION AND THAT THE SAME ARE TRUE AND CORRECT TO THE
BEST OF MY KNOWLEDGE AND BELIEF.

REGISTERED AND SURVEYOR
REGISTRATION NO. 19892
STATE OF COLORADO
07-11-12

REVISED: 07-11-12

UNTARH ENGINEERING & LAND SURVEYING
86 SOUTH 200 EAST - VERNAL, UTAH 84078

(435) 789-1017

SCALE 1" = 1000' DATE SURVEYED: 06-20-12 DATE DRAWN: 06-27-12

PARTY J.H. C.M. J.W. REFERENCES G.L.O. PLAT

WEATHER HOT FILE CONOCO PHILLIPS COMPANY

LEGEND:

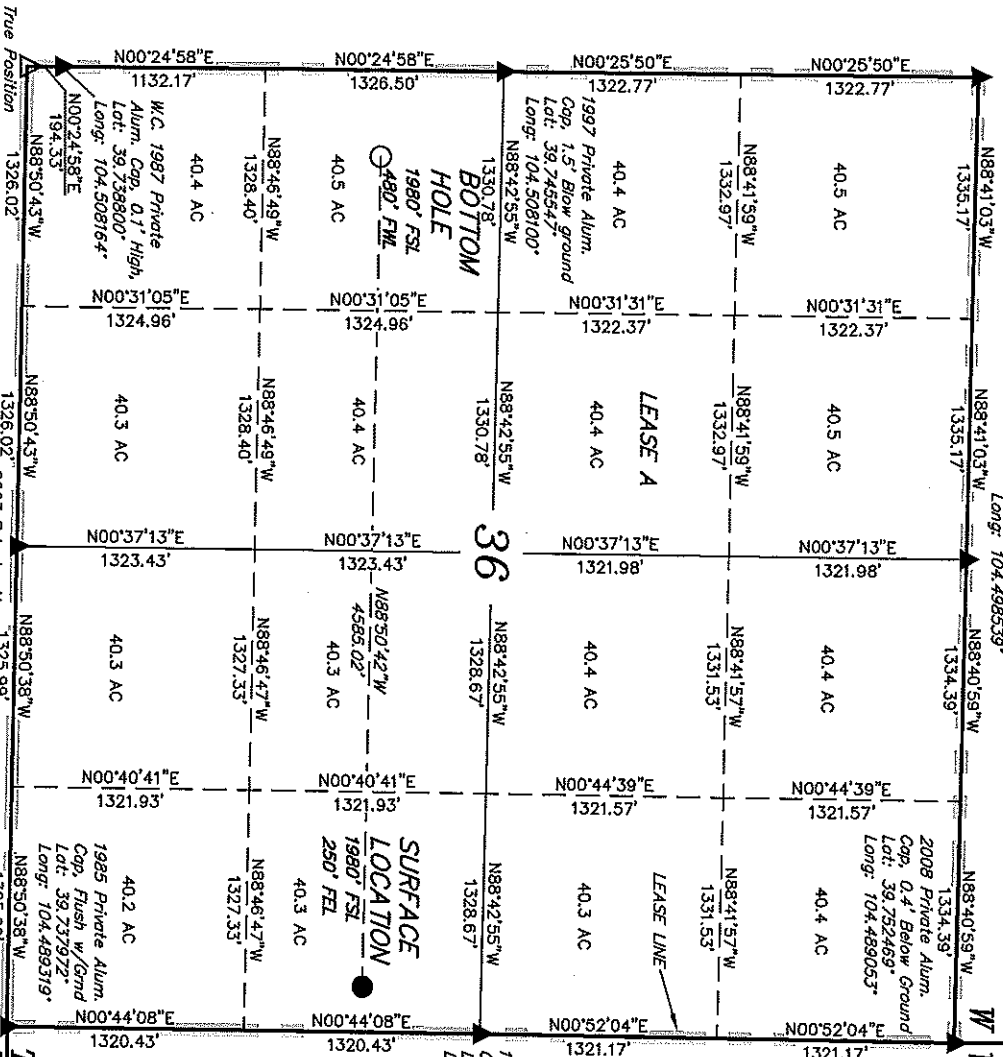
△ = SECTION CORNERS RE-ESTABLISHED. (Not Set on Ground.)

□ = 90° SYMBOL

● = PROPOSED WELL HEAD.

▲ = SECTION CORNERS LOCATED.

MAD 83 (TARGET BOTTOM HOLE)		MAD 83 (SURFACE LOCATION)	
LATITUDE = 39°44'37.23" (39.743675)	LONGITUDE = 104°30'23.08" (104.506411)	LATITUDE = 39°44'36.31" (39.743419)	LONGITUDE = 104°29'24.42" (104.490117)
MAD 27 (TARGET BOTTOM HOLE)		MAD 27 (SURFACE LOCATION)	
LATITUDE = 39°44'37.28" (39.743689)	LONGITUDE = 104°30'21.21" (104.505892)	LATITUDE = 39°44'36.36" (39.743433)	LONGITUDE = 104°29'22.55" (104.489597)

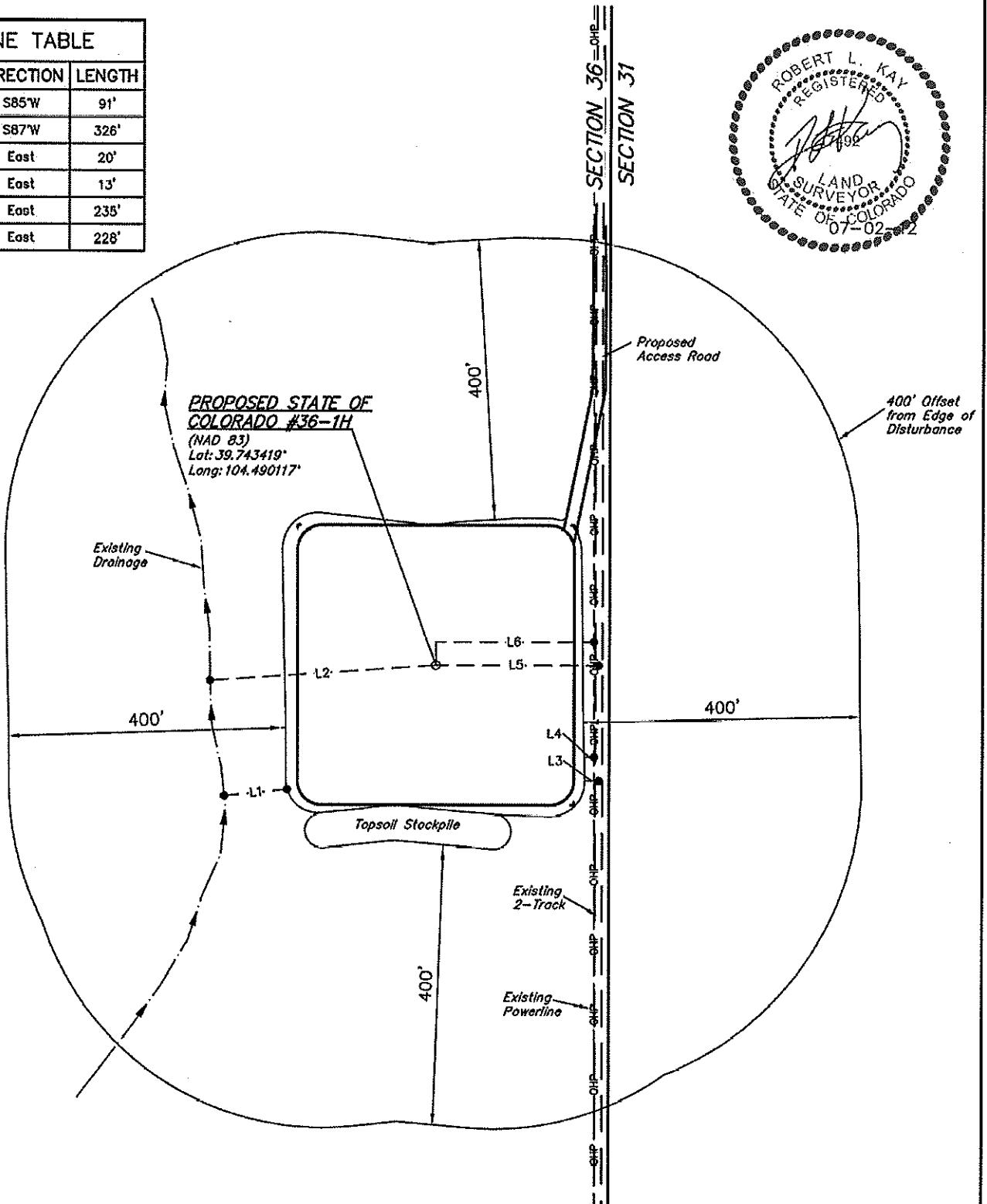




ConocoPhillips Company
ADDENDUM TO LEGAL PLAT FOR
STATE OF COLORADO #36-1H
SECTION 36, T3S, R64W, 6th P.M.
1980' FSL 250' FEL

SCALE: 1" = 200'
DATE: 06-28-12
DRAWN BY: J.W.

LINE TABLE		
LINE	DIRECTION	LENGTH
L1	S85°W	91'
L2	S87°W	326'
L3	East	20'
L4	East	13'
L5	East	235'
L6	East	228'



UINTAH ENGINEERING & LAND SURVEYING
85 So. 200 East • Vernal, Utah 84078 • (435) 789-1017