

# WHITING OIL & GAS CORP.

## CONSTRUCTION LAYOUT FOR

WILDHORSE #16-1613BH

SECTION 16, T9N, R59W, 6th P.M.

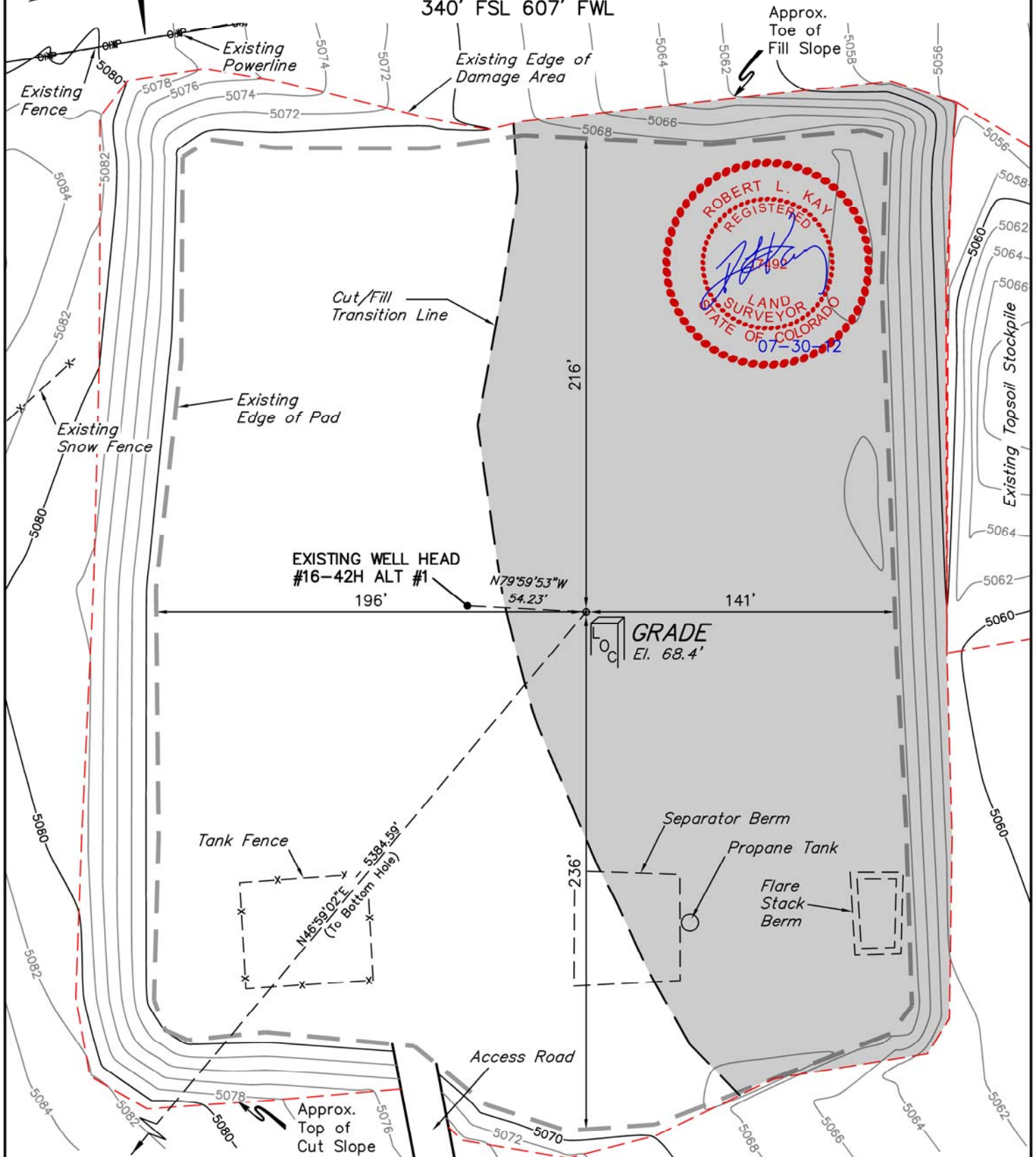
340' FSL 607' FWL

FIGURE #1

SCALE: 1" = 60'

DATE: 07-27-12

DRAWN BY: J.W.



FINISHED GRADE ELEV. AT LOC. STAKE = 5068.4'

UINTAH ENGINEERING & LAND SURVEYING

85 So. 200 East \* Vernal, Utah 84078 \* (435) 789-1017