

# WHITING OIL & GAS CORP.

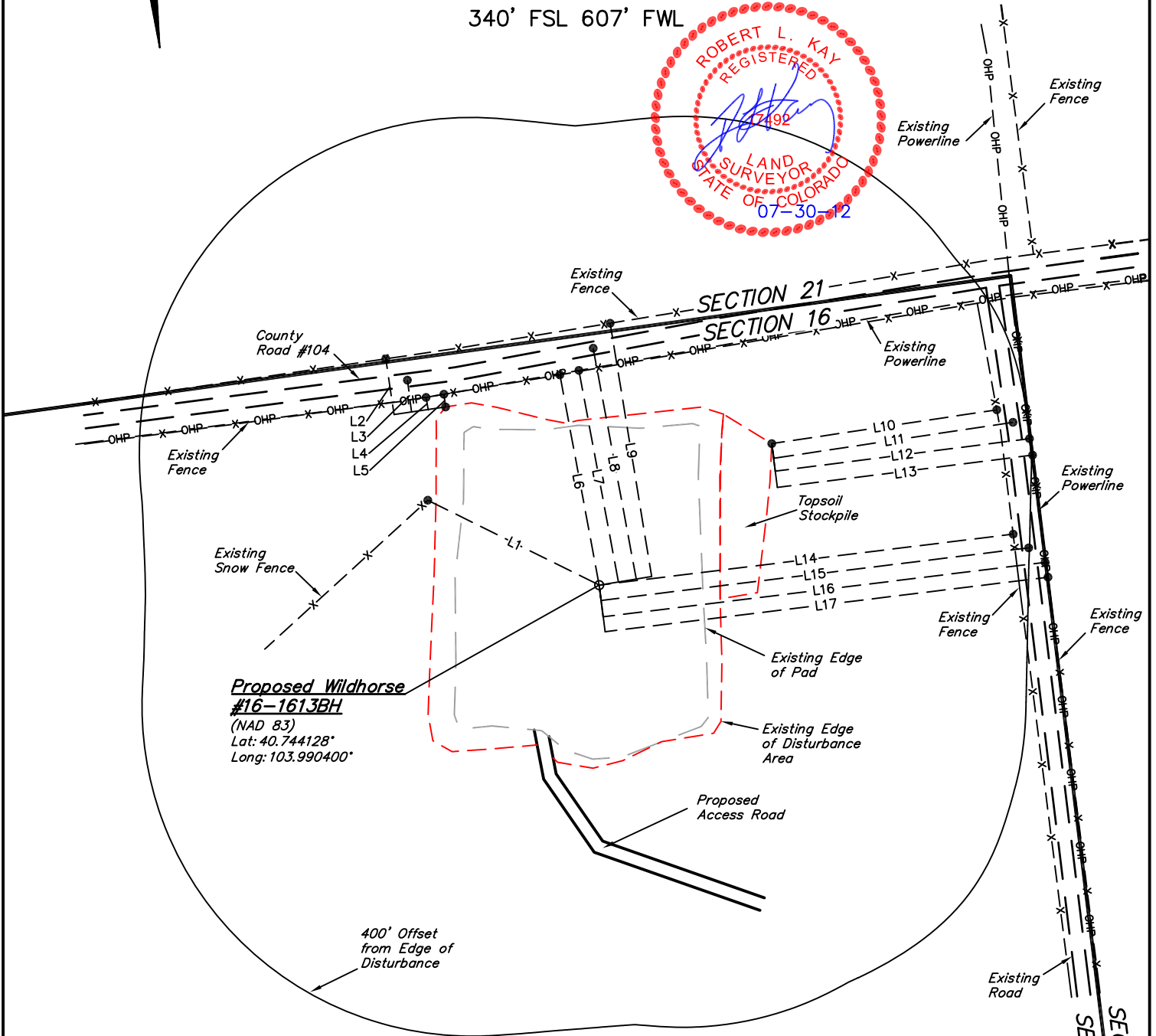
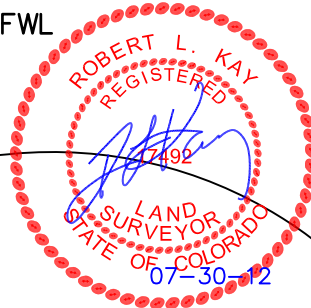
## ADDENDUM TO LEGAL PLAT FOR

WILDHORSE #16-1613BH  
SECTION 16, T9N, R59W, 6th P.M.  
340' FSL 607' FWL

SCALE: 1" = 200'

DATE: 07-27-12

DRAWN BY: J.W.



LINE TABLE		
LINE	DIRECTION	LENGTH
L1	S57°E	260'
L2	S01°E	77'
L3	South	43'
L4	S03°E	17'
L5	South	17'
L6	S04°E	291'

LINE TABLE		
LINE	DIRECTION	LENGTH
L7	S04°E	292'
L8	S04°E	318'
L9	S02°E	349'
L10	S88°W	310'
L11	S88°W	329'
L12	West	349'

LINE TABLE		
LINE	DIRECTION	LENGTH
L13	West	350'
L14	West	567'
L15	West	586'
L16	West	606'
L17	West	607'