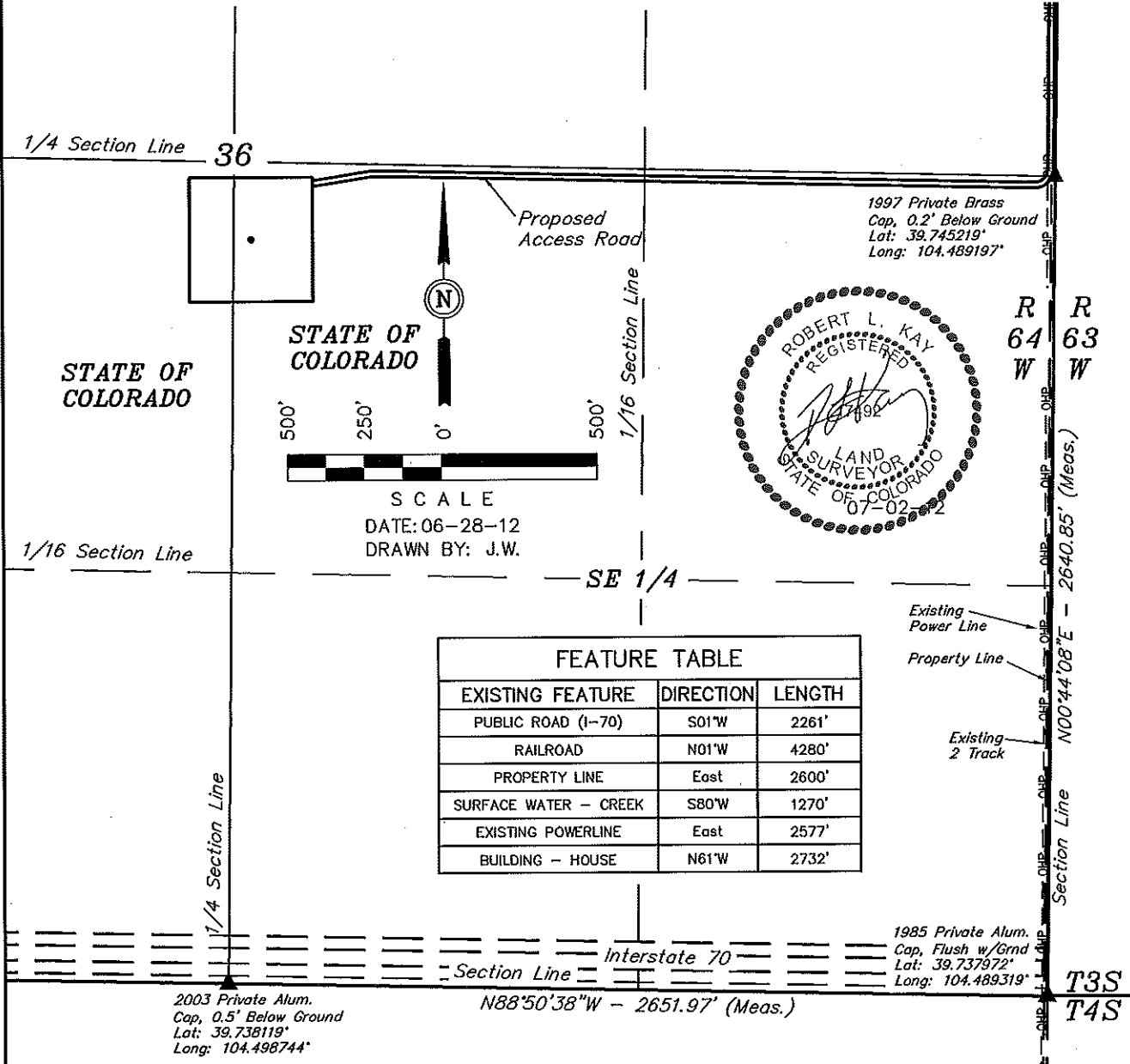


ConocoPhillips Company

FIGURE #5

LOCATION DRAWING FOR
STATE OF COLORADO #36 VERTICAL
SECTION 36, T3S, R64W, 6th P.M.
2396' FSL 2600' FEL



FEATURE TABLE

EXISTING FEATURE	DIRECTION	LENGTH
PUBLIC ROAD (I-70)	S01°W	2261'
RAILROAD	N01°W	4280'
PROPERTY LINE	East	2600'
SURFACE WATER - CREEK	S80°W	1270'
EXISTING POWERLINE	East	2577'
BUILDING - HOUSE	N61°W	2732'

PLANT COMMUNITY

- ☐ DISTURBED GRASSLAND
- ☐ NATIVE GRASSLAND
- ☐ SHRUB LAND
- ☐ PLAINS RIPARIAN
- ☐ MOUNTAIN RIPARIAN
- ☐ FOREST LAND
- ☐ WETLANDS AQUATIC
- ☐ ALPINE
- ☐ OTHER (Describe):

CURRENT LAND USE

- CROP LAND: ☐ IRRIGATED ☐ DRY LAND ☐ IMPROVED PASTURE ☐ HAY MEADOW ☐ CRP
- NON-CROP LAND: ☐ RANGELAND ☐ TIMBER ☐ RECREATIONAL ☐ OTHER (Describe)
- SUBDIVIDED: ☐ INDUSTRIAL ☐ COMMERCIAL ☐ RESIDENTIAL

FUTURE LAND USE

- CROP LAND: ☐ IRRIGATED ☐ DRY LAND ☐ IMPROVED PASTURE ☐ HAY MEADOW ☐ CRP
- NON-CROP LAND: ☐ RANGELAND ☐ TIMBER ☐ RECREATIONAL ☐ OTHER (Describe)
- SUBDIVIDED: ☐ INDUSTRIAL ☐ COMMERCIAL ☐ RESIDENTIAL

UINTAH ENGINEERING & LAND SURVEYING
85 So. 200 East * Vernal, Utah 84078 * (435) 789-1017