

LEGEND:

⊙ PROPOSED LOCATION

ConocoPhillips Company

**STATE OF COLORADO #36 VERTICAL
SECTION 36, T3S, R64W, 6th P.M.
2396' FSL 2600' FEL**



Utah Engineering & Land Surveying
85 South 200 East Vernal, Utah 84078
(435) 789-1017 * FAX (435) 789-1813

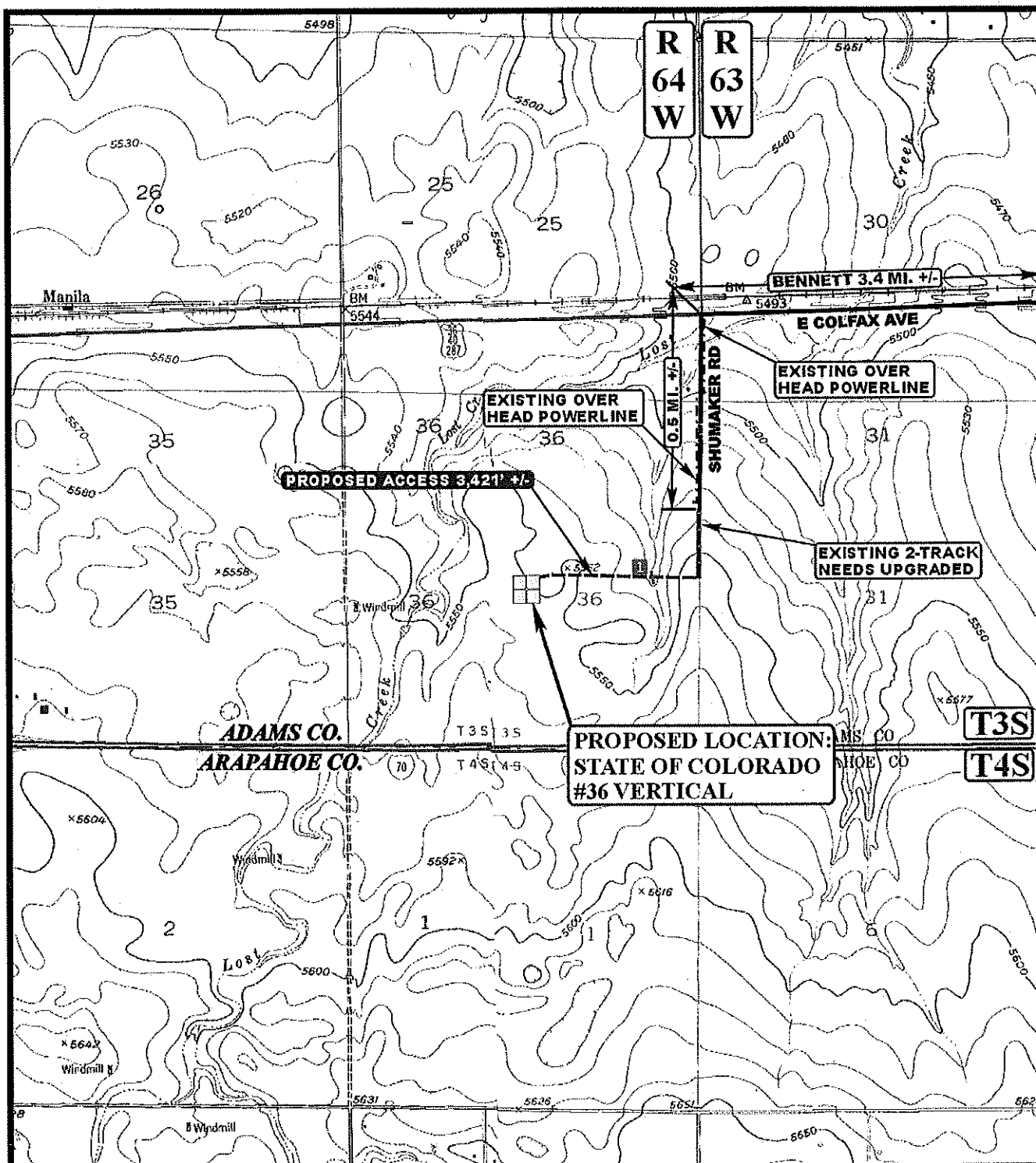


**ACCESS ROAD
MAP**

06 21 12
MONTH DAY YEAR



SCALE: 1:100,000 DRAWN BY: A.T. REVISED: 00-00-00



LEGEND:

| | |
|--|---------------------------------|
| | EXISTING ROAD |
| | PROPOSED ACCESS ROAD |
| | EXISTING 2-TRACK NEEDS UPGRADED |
| | EXISTING POWERLINE |
| | 48" CMP REQUIRED |

Utah Engineering & Land Surveying
85 South 200 East Vernal, Utah 84078
(435) 789-1017 * FAX (435) 789-1813

ConocoPhillips Company

STATE OF COLORADO #36 VERTICAL
SECTION 36, T3S, R64W, 6th P.M.
2396' FSL 2600' FEL

| | | | | |
|--------------------|-------|----------------|------|-------------------|
| ACCESS ROAD MAP | 06 | 21 | 12 | B TOPO |
| | MONTH | DAY | YEAR | |
| SCALE: 1" = 2000' | | DRAWN BY: A.T. | | REVISED: 00-00-00 |