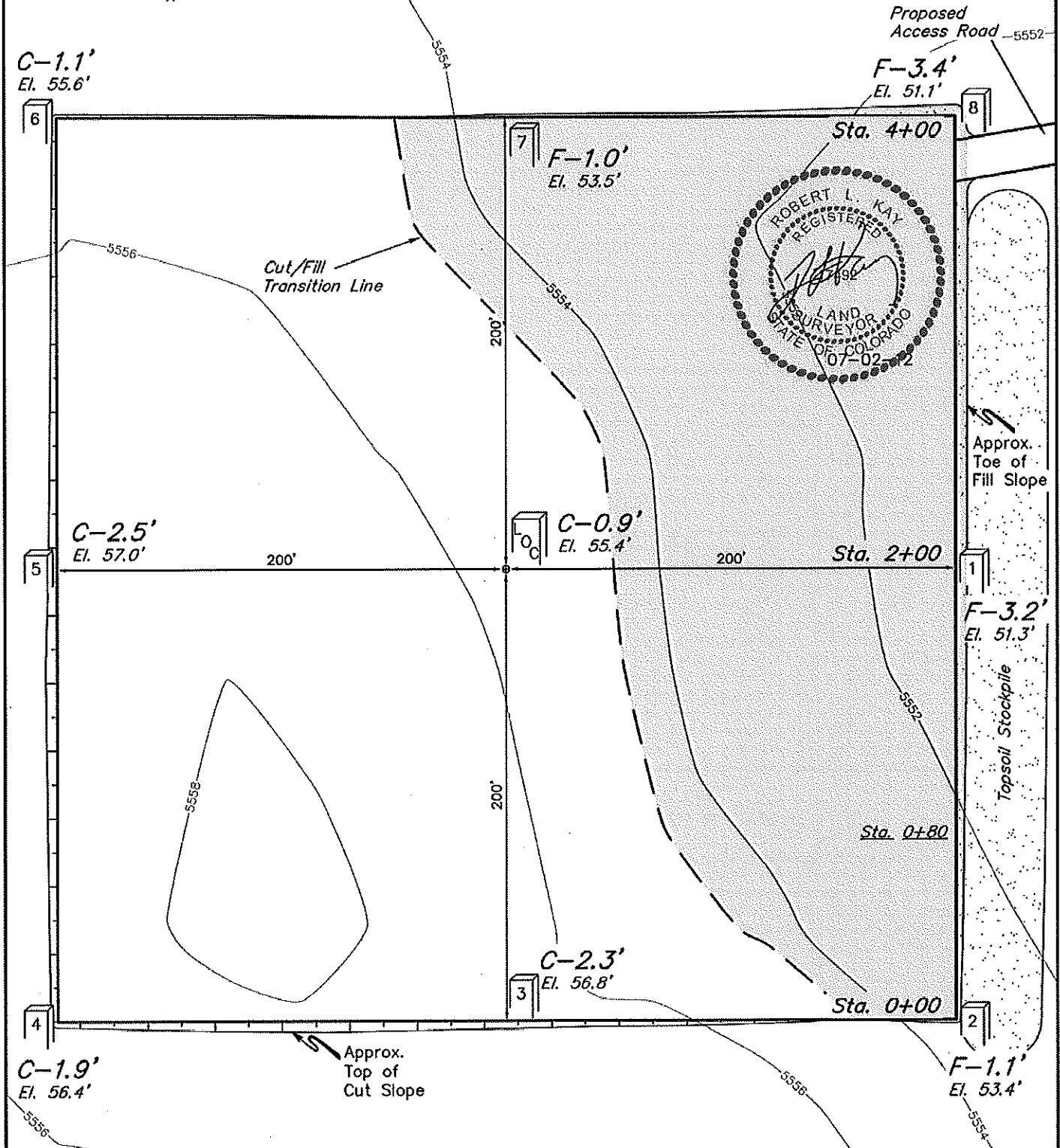


**ConocoPhillips Company**  
**CONSTRUCTION LAYOUT FOR**  
**STATE OF COLORADO #36 VERTICAL**  
**SECTION 36, T3S, R64W, 6th P.M.**  
**2396' FSL 2600' FEL**

**FIGURE #1**

SCALE: 1" = 60'  
DATE: 06-28-12  
DRAWN BY: J.W.



Elev. Ungraded Ground At Loc. Stake = 5555.4'  
FINISHED GRADE ELEV. AT LOC. STAKE = 5554.5'

**UINTAH ENGINEERING & LAND SURVEYING**  
85 So. 200 East • Vernal, Utah 84078 • (435) 789-1017

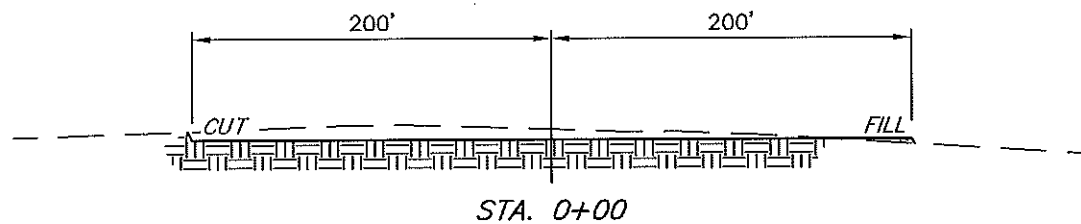
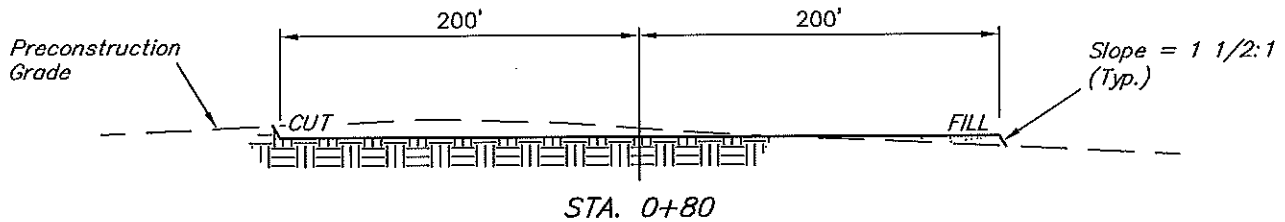
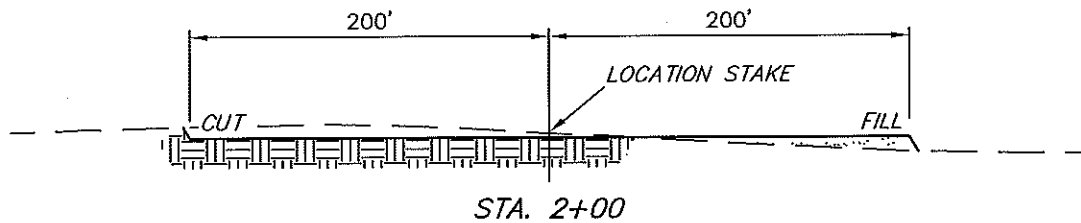
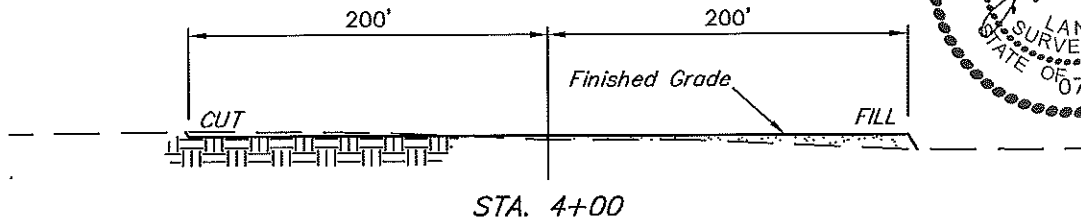
1" = 40'  
X-Section  
Scale  
1" = 100'

DATE: 06-28-12  
DRAWN BY: J.W.

**ConocoPhillips Company**  
**CONSTRUCTION LAYOUT CROSS SECTIONS FOR**

**STATE OF COLORADO #36 VERTICAL**  
**SECTION 36, T3S, R64W, 6th P.M.**  
**2396' FSL 2600' FEL**

**FIGURE #2**



**NOTE:**

Topsail should not be Stripped Below Finished Grade on Substructure Area.

**APPROXIMATE ACREAGES**  
WELL SITE DISTURBANCE = ± 4.100 ACRES  
ACCESS ROAD DISTURBANCE = ± 2.356 ACRES  
TOTAL = ± 6.456 ACRES

**\* NOTE:**  
FILL QUANTITY INCLUDES 5% FOR COMPACTION

**APPROXIMATE YARDAGES**

(6") Topsoil Stripping = 2,960 Cu. Yds.  
Remaining Location = 5,480 Cu. Yds.  
TOTAL CUT = 8,440 CU. YDS.  
FILL = 5,480 CU. YDS.

EXCESS MATERIAL = 2,960 Cu. Yds.  
Topsoil & Pit Backfill = 2,960 Cu. Yds.  
(1/2 Pit Vol.)  
EXCESS UNBALANCE = 0 Cu. Yds.  
(After Interim Rehabilitation)

**UINTAH ENGINEERING & LAND SURVEYING**  
85 So. 200 East \* Vernal, Utah 84078 \* (435) 789-1017