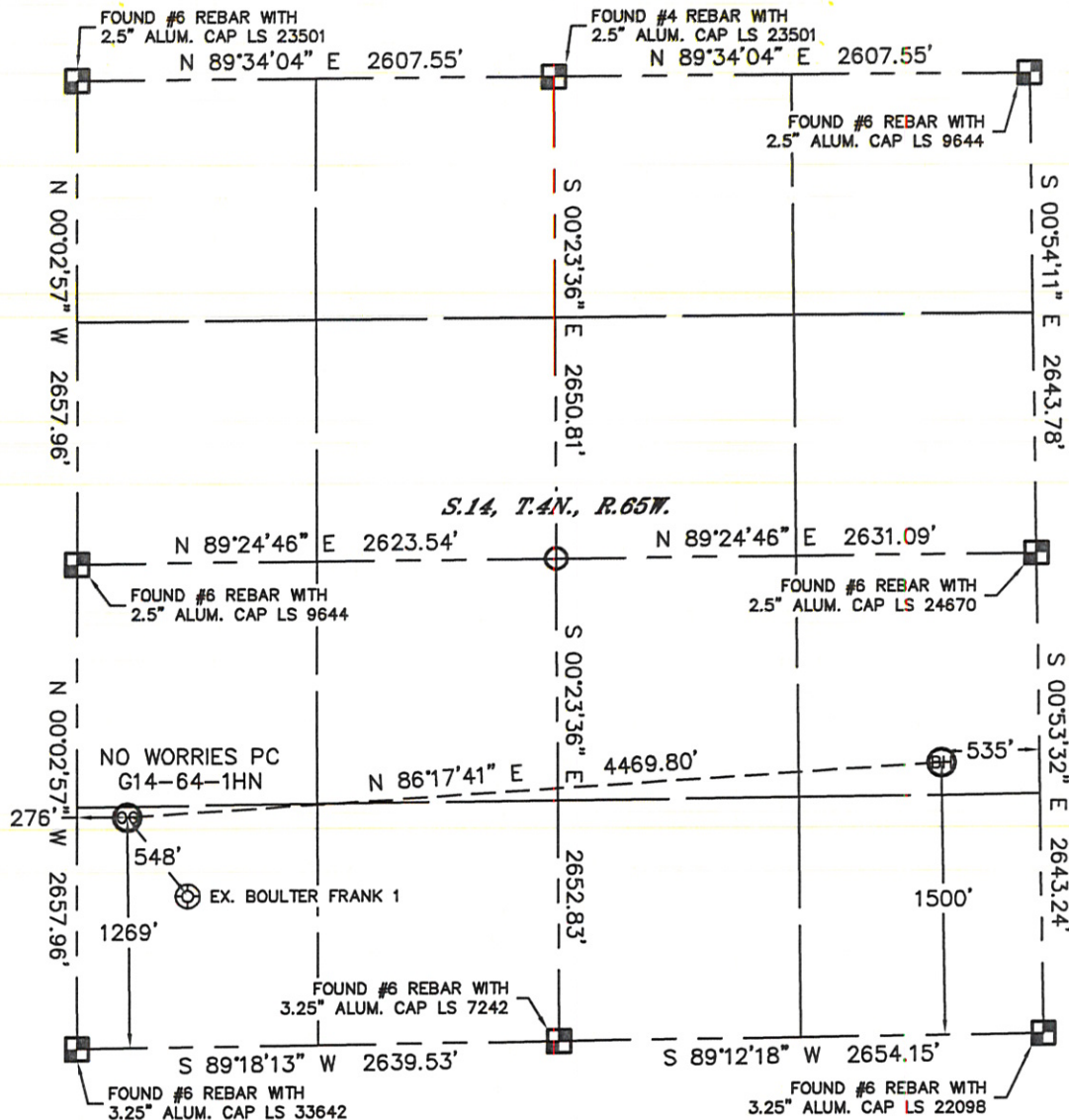


Lat40°, Inc. 1635 Foxtrail Drive, Suite 325 Loveland, CO 970-776-3321

# WELL LOCATION CERTIFICATE

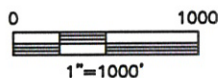
SECTION: 14  
TOWNSHIP: 4N  
RANGE: 65W

THIS MAP DOES NOT REPRESENT A BOUNDARY SURVEY



In accordance with a request from Ryan Hawkins with Noble Energy Inc. Lat40°, Inc. has determined the surface location of the NO WORRIES PC G14-64-1HN to be 1269' from the SOUTH line and 276' from the WEST line and the bottom hole to be 1500' from the SOUTH line and 535' from the EAST line as measured at right angles from the section lines of Section 14, Township 4 North, Range 65 West of the Sixth Principal Meridian, County of Weld, State of Colorado.

I hereby state that this Well Location Certificate was prepared by me, or under my direct supervision, that the fieldwork was completed on 10/31/2011, for and on behalf of Noble Energy Inc. That this is not a Land Survey Plat or an Improvement Survey Plat, and that it is not to be relied upon for establishment of fence, building, or other future Improvement lines.





## NOTE:

- 1) Bearings shown are Grid Bearings of the Colorado State Plane Coordinate System, North Zone, North American Datum 1983/2007. The lineal dimensions as contained herein are based upon the "U.S. Survey Foot."
- 2) Ground elevations are based on an observed GPS elevation (NAVD 1988 DATUM).
- 3) NEAREST EXISTING WELL: BOULTER FRANK 1, 548'
- 4) IMPROVEMENTS: See LOCATION DRAWING for all visible improvements within 400' of disturbed area.
- 5) SURFACE USE: PASTURE
- 6) INSTRUMENT OPERATOR: ADAM KELLY

## NOTE

According to Colorado law, you must commence any legal action based upon any defect in this W.L.C. within three years after you discover such defect. In no event, may any action based upon any defect in this survey be commenced more than ten years after the date of the certificate shown hereon. (13-80-105 C.R.S.)

## LEGEND

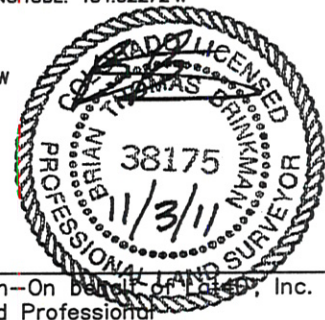
-  = ALIQUOT MONUMENT AS DESCRIBED
-  = CALCULATED POSITION

## SURFACE LOCATION

LATITUDE: 40.30866°N  
LONGITUDE: 104.63872°W  
PDOP: 1.1  
ELEV: 4695'  
1/4,1/4: SW1/4SW1/4  
NEAREST PROPERTY LINE: 276' W

## BOTTOM HOLE

LATITUDE: 40.30933°N  
LONGITUDE: 104.62272°W



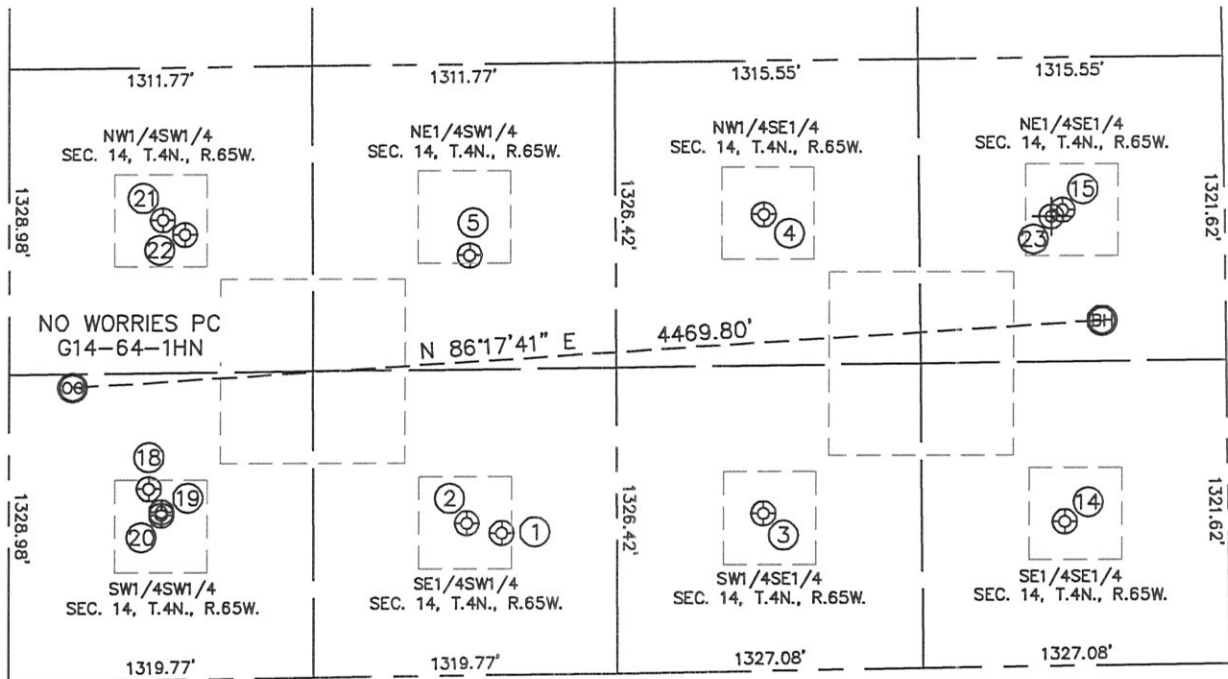
Brian T. Brinkman--On behalf of Lat40°, Inc.  
Colorado Licensed Professional  
Land Surveyor No. 38175

PROJECT#: 2011234

# SITE SKETCH

NO WORRIES PC G14-64-1HN

SECTION: 14  
TOWNSHIP: 4N  
RANGE: 65W



①

BOULTER 14-14G  
SE1/4SW1/4  
616' FSL  
2135' FWL  
LAT-40.30688°N  
LONG-104.63208°W  
PDOP: 2.0  
ELEV: 4700'

②

VICTOR G14-14  
SE1/4SW1/4  
660' FSL  
1983' FWL  
LAT-40.30700°N  
LONG-104.62362°W  
PDOP: 1.9  
ELEV: 4700'

③

SALLEE 14-43  
SW1/4SE1/4  
683' FSL  
2012' FEL  
LAT-40.30707°N  
LONG-104.62800°W  
PDOP: 1.7  
ELEV: 4706'

④

SALLEE 14-3  
NW1/4SE1/4  
1983' FSL  
1993' FEL  
LAT-40.31064°N  
LONG-104.62796°W  
PDOP: 3.0  
ELEV: 4706'

⑤

BOULTER 14-11G  
NE1/4SW1/4  
1822' FSL  
1994' FWL  
LAT-40.31019°N  
LONG-104.63255°W  
PDOP: 1.2  
ELEV: 4697'

⑭

SALLEE 14-1  
SE1/4SE1/4  
627' FSL  
707' FEL  
LAT-40.30693°N  
LONG-104.62332°W  
PDOP: 1.4  
ELEV: 4722'

⑮

SALLEE 14-2  
NE1/4SE1/4  
1983' FSL  
699' FEL  
LAT-40.31065°N  
LONG-104.62332°W  
PDOP: 1.7  
ELEV: 4722'

⑮

BOULTER FRANK 1  
SW1/4SW1/4  
828' FSL  
606' FWL  
LAT-40.30745°N  
LONG-104.63755°W  
PDOP: 1.8  
ELEV: 4695'

⑮

WORRIES 35-14 DIR  
SW1/4SW1/4  
727' FSL  
660' FWL  
LAT-40.30717°N  
LONG-104.63736°W  
PDOP: 1.4  
ELEV: 4698'

⑮

WORRIES 34-14 DIR  
SW1/4SW1/4  
713' FSL  
660' FWL  
LAT-40.30713°N  
LONG-104.63736°W  
PDOP: 1.4  
ELEV: 4698'

⑮

VICTOR G14-12  
NW1/4SW1/4  
1994' FSL  
665' FWL  
LAT-40.31065°N  
LONG-104.63730°W  
PDOP: 1.2  
ELEV: 4697'

⑮

BOULTER 14-12G  
NW1/4SW1/4  
1929' FSL  
761' FWL  
LAT-40.31047°N  
LONG-104.63696°W  
PDOP: 2.1  
ELEV: 4696'

⑮

SALLEE #14-2S  
(PLUGGED & ABANDONED)  
NE1/4SE1/4  
1982' FSL (COGCC)  
713' FEL (COGCC)  
LAT-40.310576°N (COGCC)  
LONG-104.623496°W (COGCC)  
PDOP: N/A  
ELEV: 4719' (COGCC)

