

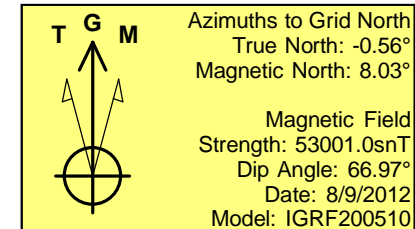
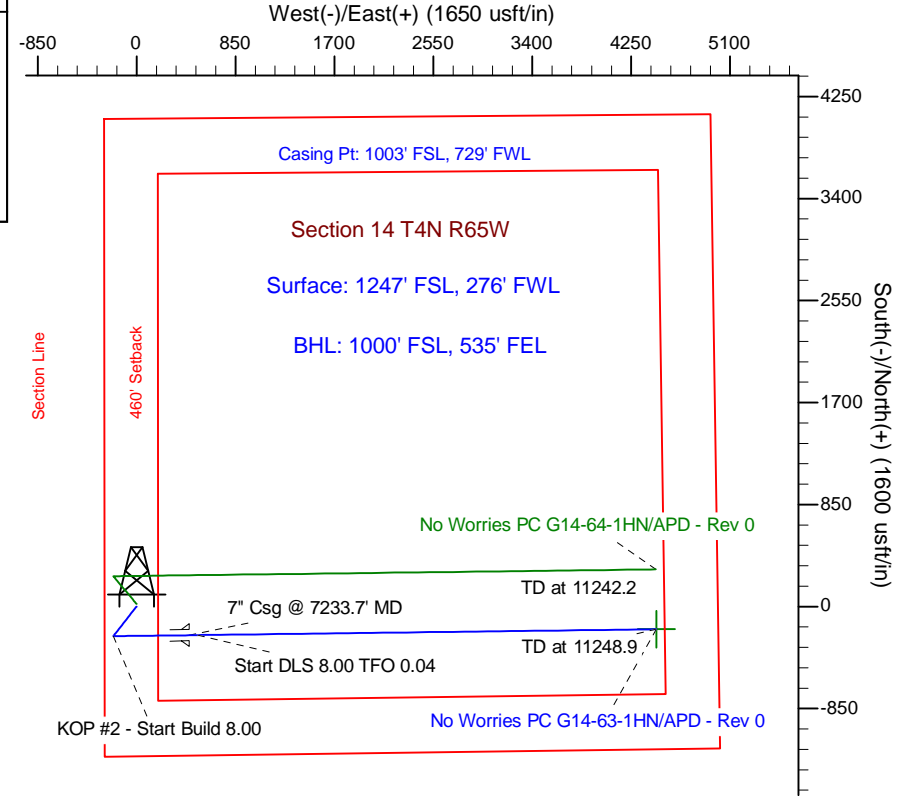
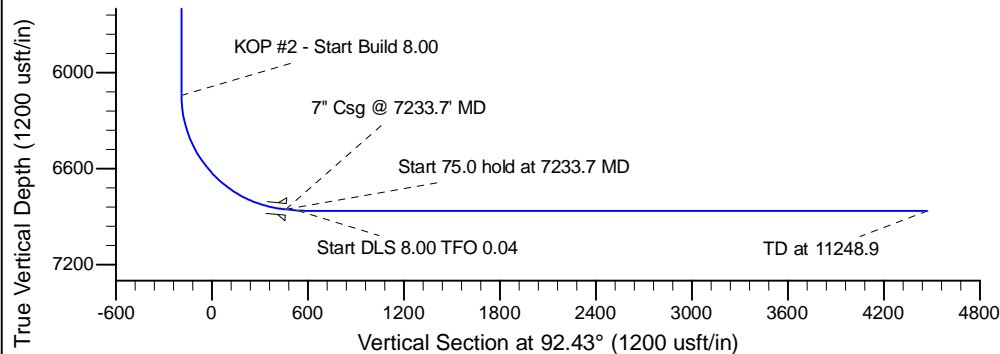
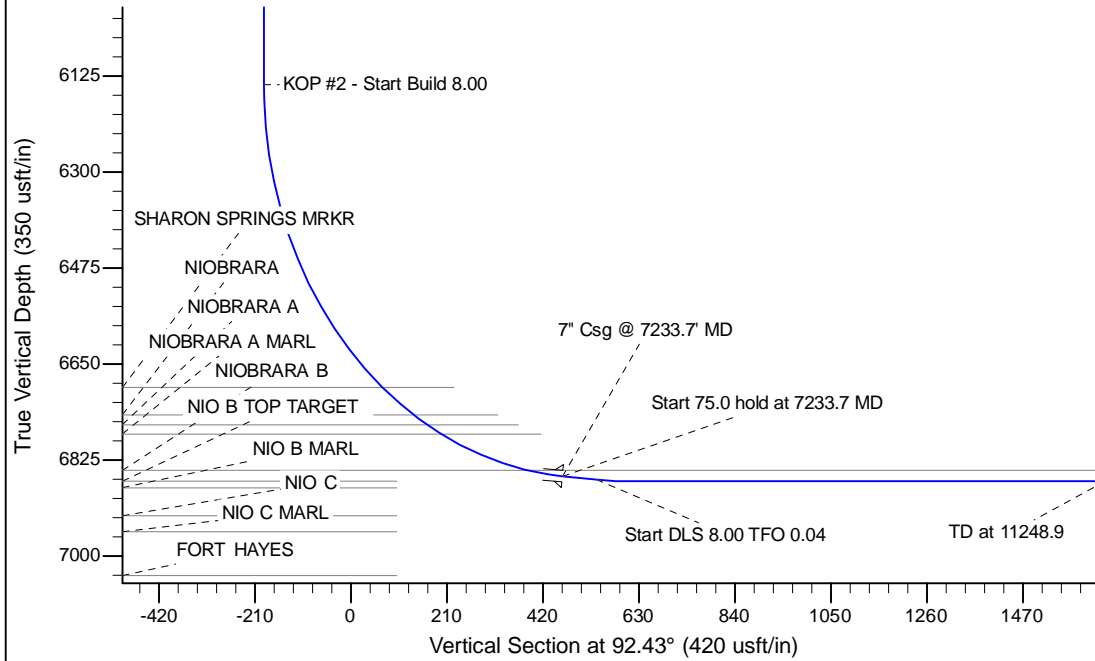
Project: Wattenberg Field  
Site: G (Sec.14-T04N-R65W) Weld County, CO  
Well: No Worries PC G14-63-1HN  
Wellbore: Original Drilling  
Design: APD - Rev 0

# Northern Region Drilling

Geodetic System: US State Plane 1983  
Datum: North American Datum 1983  
Ellipsoid: GRS 1980  
Zone: Colorado Northern Zone  
System Datum: Mean Sea Level

## SECTION DETAILS

Sec	MD	Inc	Azi	TVD	+N/-S	+E/-W	Dleg	TFace	VSect	Target
1	0.0	0.00	0.00	0.0	0.0	0.0	0.00	0.00	0.0	
2	1800.0	0.00	0.00	1800.0	0.0	0.0	0.00	0.00	0.0	
3	2280.0	12.00	219.14	2276.5	-38.8	-31.6	2.50	219.14	-29.9	
4	3330.0	12.00	219.14	3303.5	-208.2	-169.4	0.00	0.00	-160.4	
5	3809.9	0.00	0.00	3780.0	-247.0	-201.0	2.50	180.00	-190.4	
6	6171.2	0.00	0.00	6141.3	-247.0	-201.0	0.00	0.00	-190.4	
7	7233.7	85.00	89.29	6854.7	-238.9	452.7	8.00	89.29	462.4	
8	7308.7	85.00	89.29	6861.3	-238.0	527.4	0.00	0.00	537.0	
9	7371.2	90.00	89.29	6864.0	-237.2	589.8	8.00	0.04	599.4	
10	11248.9	90.00	89.29	6864.0	-189.4	4467.2	0.00	0.00	4471.3	No Worries PC G14-63-1HN BHL 1000'FSL, 535'FEL



WELL DETAILS: No Worries PC G14-63-1HN			
Ground Level:	4695.0	Latitude	40.308600
Northing	1356430.46	Easting	3240195.02
Longitude	-104.638720		
Plan: APD - Rev 0 (No Worries PC G14-63-1HN/Original Drilling)			
Created By:	Carrie Willers	Date:	12:56, August 10 2012
Checked:		Date:	
Reviewed:		Date:	
Approved:		Date:	