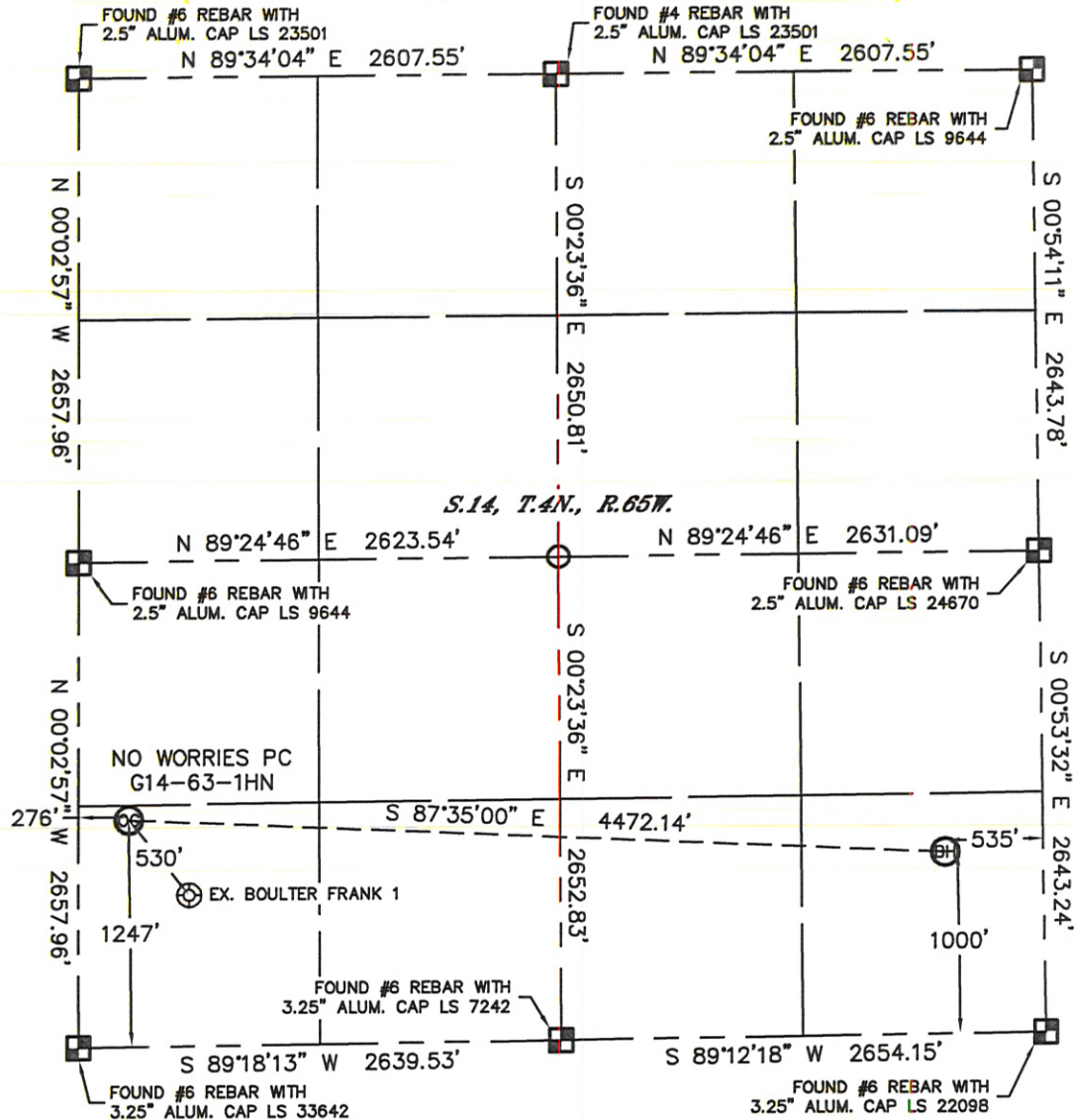


WELL LOCATION CERTIFICATE

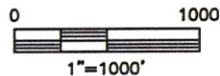
SECTION: 14
TOWNSHIP: 4N
RANGE: 65W

THIS MAP DOES NOT REPRESENT A BOUNDARY SURVEY



In accordance with a request from Ryan Hawkins with Noble Energy Inc. Lat40°, Inc. has determined the surface location of the NO WORRIES PC G14-63-1HN to be 1247' from the SOUTH line and 276' from the WEST line and the bottom hole to be 1000' from the SOUTH line and 535' from the EAST line as measured at right angles from the section lines of Section 14, Township 4 North, Range 65 West of the Sixth Principal Meridian, County of Weld, State of Colorado.

I hereby state that this Well Location Certificate was prepared by me, or under my direct supervision, that the fieldwork was completed on 10/31/2011, for and on behalf of Noble Energy Inc. That this is not a Land Survey Plat or an Improvement Survey Plat, and that it is not to be relied upon for establishment of fence, building, or other future improvement lines.



NOTE:

- 1) Bearings shown are Grid Bearings of the Colorado State Plane Coordinate System, North Zone, North American Datum 1983/2007. The lineal dimensions as contained herein are based upon the "U.S. Survey Foot."
- 2) Ground elevations are based on an observed GPS elevation (NAVD 1988 DATUM).
- 3) NEAREST EXISTING WELL: BOULTER FRANK 1, 530'
- 4) IMPROVEMENTS: See LOCATION DRAWING for all visible improvements within 400' of disturbed area.
- 5) SURFACE USE: PASTURE
- 6) INSTRUMENT OPERATOR: ADAM KELLY



SURFACE LOCATION
LATITUDE: 40.30860°N
LONGITUDE: 104.63872°W
PDOP: 1.6
ELEV: 4695'
1/4, 1/4: SW1/4SW1/4
NEAREST PROPERTY LINE: 276' W

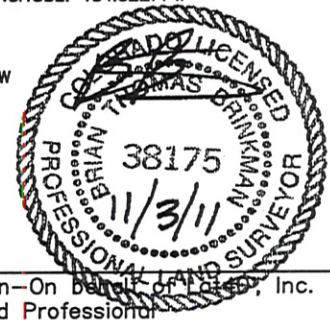
BOTTOM HOLE
LATITUDE: 40.30796°N
LONGITUDE: 104.62271°W

NOTE

According to Colorado law, you must commence any legal action based upon any defect in this W.L.C. within three years after you discover such defect. In no event, may any action based upon any defect in this survey be commenced more than ten years after the date of the certificate shown hereon. (13-80-105 C.R.S.)

LEGEND

-  = ALIQUOT MONUMENT AS DESCRIBED
-  = CALCULATED POSITION



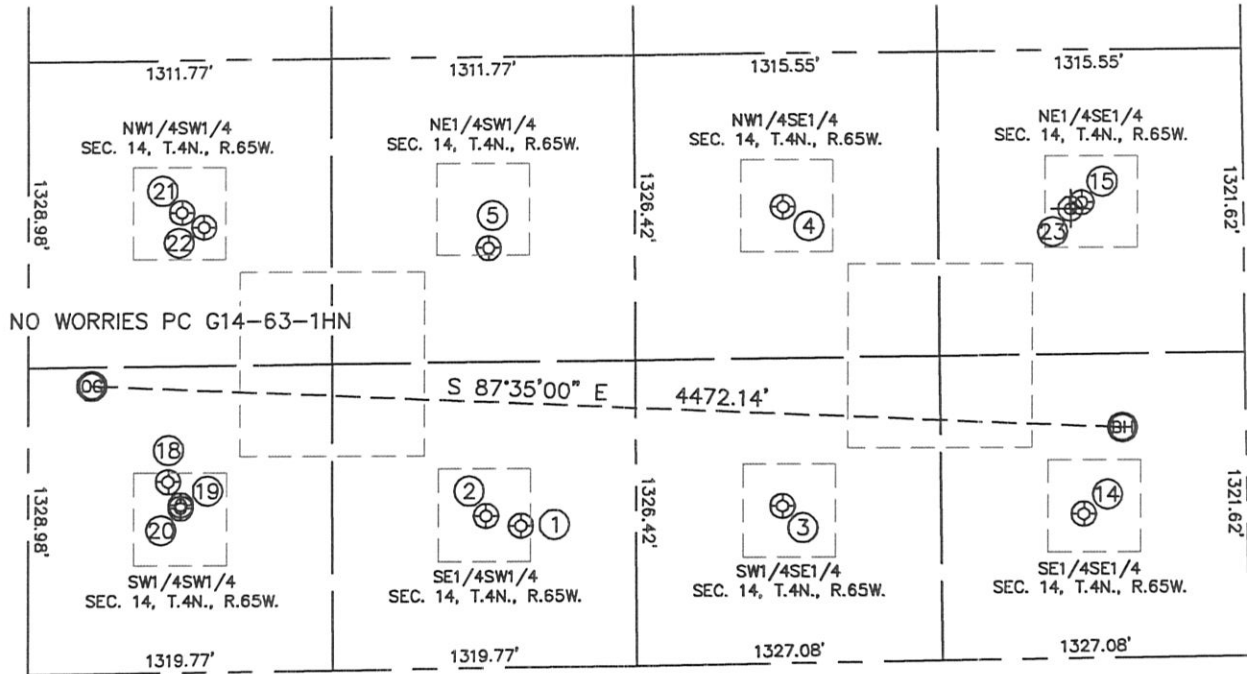
Brian T. Brinkman—On behalf of Lat40°, Inc.
Colorado Licensed Professional
Land Surveyor No. 38175

PROJECT#: 2011234

SITE SKETCH

NO WORRIES PC G14-63-1HN

SECTION: 14
TOWNSHIP: 4N
RANGE: 65W



①

BOULTER 14-14G
SE1/4SW1/4
616' FSL
2135' FWL
LAT-40.30688°N
LONG-104.63208°W
PDOP: 2.0
ELEV: 4700'

②

VICTOR G14-14
SE1/4SW1/4
660' FSL
1983' FWL
LAT-40.30700°N
LONG-104.63262°W
PDOP: 1.9
ELEV: 4700'

③

SALLEE 14-43
SW1/4SE1/4
683' FSL
2012' FEL
LAT-40.30707°N
LONG-104.62800°W
PDOP: 1.7
ELEV: 4706'

④

SALLEE 14-3
NW1/4SE1/4
1983' FSL
1993' FEL
LAT-40.31064°N
LONG-104.62796°W
PDOP: 3.0
ELEV: 4706'

⑤

BOULTER 14-11G
NE1/4SW1/4
1822' FSL
1994' FWL
LAT-40.31019°N
LONG-104.63255°W
PDOP: 1.2
ELEV: 4697'

⑭

SALLEE 14-1
SE1/4SE1/4
627' FSL
707' FEL
LAT-40.30693°N
LONG-104.62332°W
PDOP: 1.4
ELEV: 4722'

⑮

SALLEE 14-2
NE1/4SE1/4
1983' FSL
699' FEL
LAT-40.31065°N
LONG-104.62332°W
PDOP: 1.7
ELEV: 4722'

⑮

BOULTER FRANK 1
SW1/4SW1/4
828' FSL
606' FWL
LAT-40.30745°N
LONG-104.62755°W
PDOP: 1.8
ELEV: 4695'

⑮

WORRIES 35-14 DIR
SW1/4SW1/4
727' FSL
660' FWL
LAT-40.30717°N
LONG-104.63736°W
PDOP: 1.4
ELEV: 4698'

⑮

WORRIES 34-14 DIR
SW1/4SW1/4
713' FSL
660' FWL
LAT-40.30713°N
LONG-104.63736°W
PDOP: 1.4
ELEV: 4698'

⑮

VICTOR G14-12
NW1/4SW1/4
1994' FSL
665' FWL
LAT-40.31065°N
LONG-104.63730°W
PDOP: 1.2
ELEV: 4697'

⑮

BOULTER 14-12G
NW1/4SW1/4
1929' FSL
761' FWL
LAT-40.31047°N
LONG-104.63696°W
PDOP: 2.1
ELEV: 4696'

⑮

SALLEE #14-2S
(PLUGGED & ABANDONED)
NE1/4SE1/4
1982' FSL (COGCC)
713' FEL (COGCC)
LAT-40.310576°N (COGCC)
LONG-104.623496°W (COGCC)
PDOP: N/A
ELEV: 4719' (COGCC)

