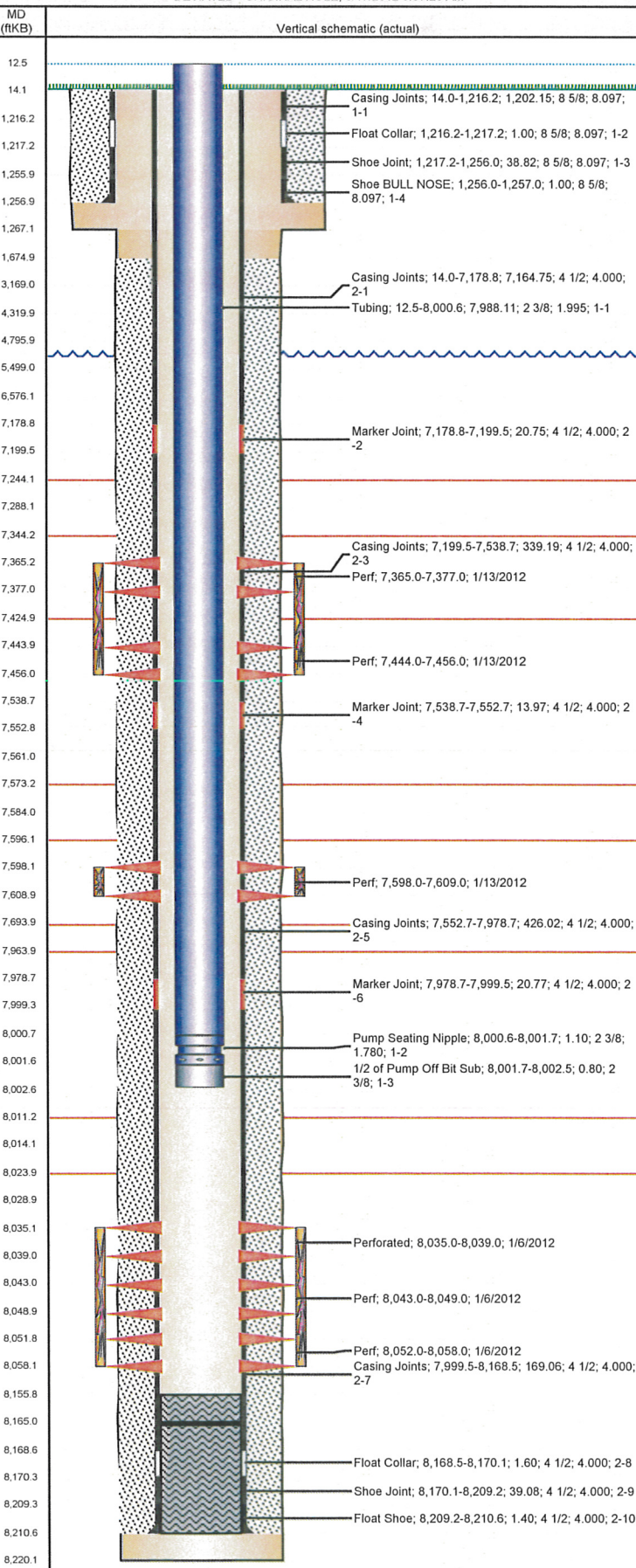


Well Name: BRANDT USX WW13-07D

DEVIATED - ORIGINAL HOLE, 9/17/2012 8:57:20 AM



Well Header

API 05-123-34175	Business Unit WATTENBERG	Spud Date 12/10/2011	Well Configuration Type DEVIATED
Original KB Elevation (ft) 5,062.00		KB - GL / MSL (ftKB) 14.00	P & A Date

Comment
3 7/8" CONE BIT & 1/2 OF PUMP OFF BIT SUB @ 8164' KB.

Directions To Well
CR 8 & CR 37, GO WEST 0.5 MILES, NORTH 4/10THS, THEN EAST.

Bottom Hole Location

North-South Distance (ft) 2,080.0	From N or S Line FNL	East-West Distance (ft) 1,986.0	From E or W Line FEL
--------------------------------------	-------------------------	------------------------------------	-------------------------

Plug Back Total Depths

Date	Depth (ftKB)	Method	Com
12/17/2011	8,168.5	CASING TALLY	FLOAT COLLAR
12/28/2011	8,156.0	CASED HOLE LOG	DEPTH LOGGER
3/28/2012	8,165.1	TBG TALLY	DRILLED OUT KILL PLUG AND 2 CFP AND C/O T...

Wellbore Sections

Section Des	Size (in)	Act Top (ftKB)	Act Btm (ftKB)
SURFACE	12 1/4	14.0	1,267.0
PRODUCTION	7 7/8	1,267.0	8,220.0

Zone Statuses

Zone Name	Status Date	Status	Job
NIOBRARA	1/26/2012	PR	DRILLING/COMPLETION - ORIGINAL, 12/9/2011 22:00
CODELL	1/26/2012	PR	DRILLING/COMPLETION - ORIGINAL, 12/9/2011 22:00
J SAND	1/26/2012	PR	DRILLING/COMPLETION - ORIGINAL, 12/9/2011 22:00

Casing Strings

SURFACE, 1,257.0ftKB						
Casing Description	Run Date	OD (in)	Wt/Len (lb...)	Grade	Top (ftKB)	Set Depth (ft...)
SURFACE	12/11/2011	8 5/8	24.00	J-55	14.0	1,257.0

PRODUCTION, 8,210.6ftKB

Casing Description	Run Date	OD (in)	Wt/Len (lb...)	Grade	Top (ftKB)	Set Depth (ft...)
PRODUCTION	12/17/2011	4 1/2	11.60	M-80	14.0	8,210.6

Cement

Description	Top Depth (ftKB)	Bottom Depth (ftKB)
Surface Casing Cement	14.0	1,257.0
Description	Top Depth (ftKB)	Bottom Depth (ftKB)
Production Casing Cement	1,675.0	8,210.6

Tubing Components

Item Des	OD (in)	Wt (lb/ft)	Grade	Jts	Len (ft)
Tubing	2 3/8	4.70	J-55	259	7,988.11
Pump Seating Nipple	2 3/8			1	1.10
1/2 of Pump Off Bit Sub	2 3/8			1	0.80

Perforation Data

Zone	Bnch/St g	Entered Shot Total	Top (ftKB)	Btm (ftKB)	Date
NIOBRARA, ORIGINAL HOLE	B	24	7,365.0	7,377.0	1/13/2012
NIOBRARA, ORIGINAL HOLE	C	24	7,444.0	7,456.0	1/13/2012
CODELL, ORIGINAL HOLE		44	7,598.0	7,609.0	1/13/2012
J SAND, ORIGINAL HOLE	A	16	8,035.0	8,039.0	1/6/2012
J SAND, ORIGINAL HOLE	B	24	8,043.0	8,049.0	1/6/2012
J SAND, ORIGINAL HOLE	C	24	8,052.0	8,058.0	1/6/2012

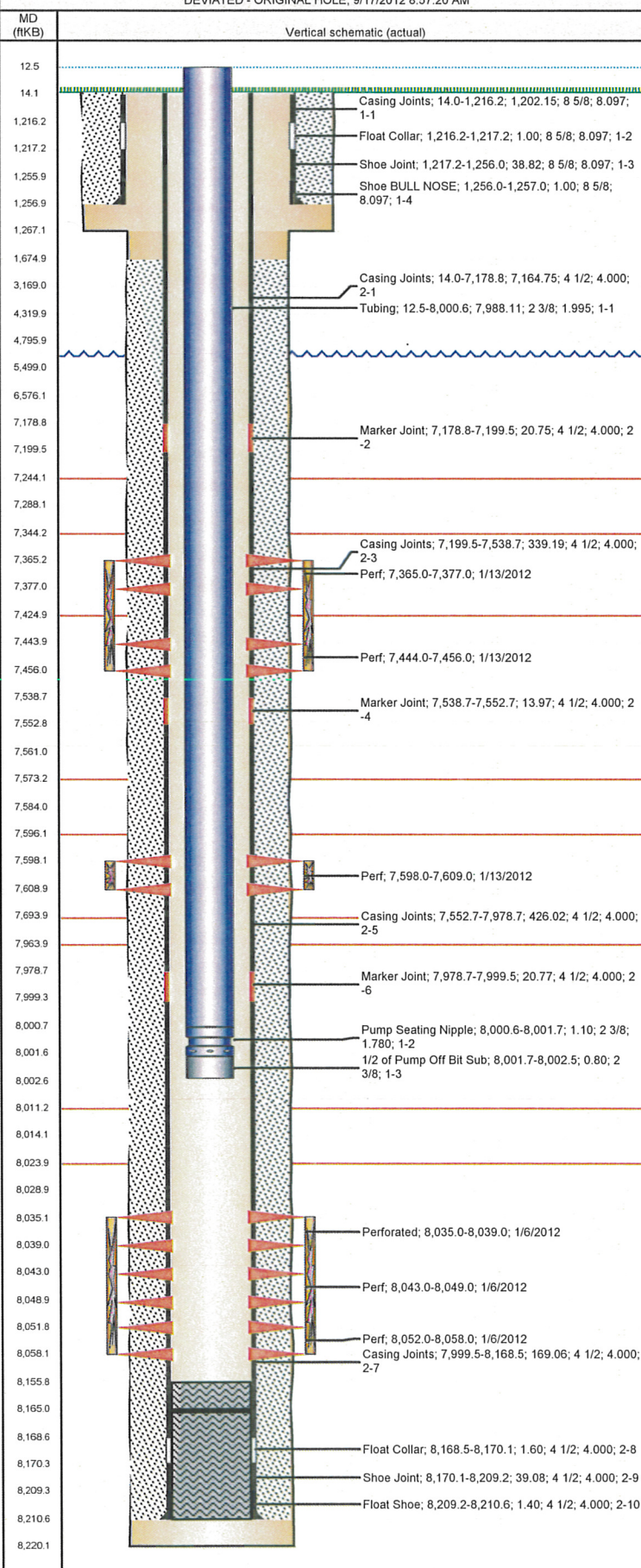
Stimulations & Treatments

Date	Zone	Primary Job Type
1/13/2012	J SAND, ORIGINAL HOLE	DRILLING/COMPLETION - ORIGINAL
Technical Result Success		Tech Result Details According to Plan
Success		Tech Result Note

Comment
(JSAND): BREAK - 2271 @ 2.8 BPM. ISIP - 1484, 5 MIN - 1078, 10 MIN - 948, 15 MIN - 861. REVERSE STEP - 27 PERFS OPEN, NWB - 707 PSI, PERF FRIC - 188 PSI. FINAL ISIP - 2499, 5 MIN - 2312. AVG VISC - 22.4, AVG PH - 10.16, AVG TEMP - 68.9. TREATMENT WENT WELL.

Well Name: BRANDT USX WW13-07D

DEVIATED - ORIGINAL HOLE, 9/17/2012 8:57:20 AM



Stimulations & Treatments

Date	Zone	Primary Job Type
1/13/2012	CODELL, ORIGINAL HOLE	DRILLING/COMPLETION - ORIGINAL
Technical Result	Tech Result Details	Tech Result Note
Success	According to Plan	

Comment
(CODELL): BREAK - 4138 @ 5.6 BPM. ISIP - 2956, 5 MIN - 2737. REVERSE STEP - 15 PERFS OPEN, NWB - 7 PSI, PERF FRIC - 426 PSI. FINAL ISIP - 3209, 5 MIN - 3005. AVG VISC - 21.8, AVG TEMP - 68.7, AVG PH - 10.16. DURING ACID SWAP DID NOT SEE ANY INCREASE IN DENSITY ON BLENDER, AND ONLY A 0.25 ON INLINE. TESTED ACID SG AND GOT 1.038, EQUIVALENT TO APPROX 7.5% HCL. LOADSHEET ON TRANSPORT STATES 15% HCL.

Date	Zone	Primary Job Type
1/13/2012	NIOBRARA, ORIGINAL HOLE	DRILLING/COMPLETION - ORIGINAL
Technical Result	Tech Result Details	Tech Result Note
Success	According to Plan	

Comment
(NIOBRARA C&B): BREAK - 2764 @ 2.8 BPM. ISIP - 2845. FINAL ISIP - 2980, 5 MIN - 2958. AVG VISC - 24.4, AVG PH - 10.3, AVG TEMP - 66.5. TREATMENT WENT WELL.

Other In Hole

Run Date	Des	OD (in)	Top (ftKB)	Btm (ftKB)

Logs

Date	Type	Top (ftKB)	Btm (ftKB)
12/17/2011	SPECTRAL DENSITY/Pe/DSN NEUTRON/SP/ARRAY COMPENSATED TRUE RESISTIVITY	4,248.0	8,218.0
12/17/2011	SPECTRAL GAMMA RAY	6,998.0	8,177.0
12/28/2011	CBL/CCL/GR	1,420.0	8,155.0