

T5S, R96W, 6th P.M.

Encana OIL & GAS (USA) INC.

Well location, WF13D-19 125 596 (SURFACE LOCATION), located as shown in Lot 4 (Tract 37) of Section 25, T5S, R96W, 6th P.M., Garfield County, Colorado.

BASIS OF ELEVATION

SPOT ELEVATION AT THE NORTHWEST CORNER OF SECTION 30, T5S, R95W, 6th P.M. TAKEN FROM THE FORKED GULCH QUADRANGLE, COLORADO, GARFIELD COUNTY, 7.5 MINUTE SERIES (TOPOGRAPHICAL MAP) PUBLISHED BY THE UNITED STATES DEPARTMENT OF THE INTERIOR, GEOLOGICAL SURVEY. SAID ELEVATION IS MARKED AS BEING 5966 FEET.

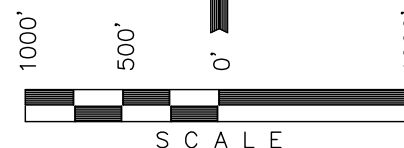
BASIS OF BEARINGS

BASIS OF BEARINGS IS A G.P.S. OBSERVATION.

NOTE:  
THE PROPERTY LINE IS LOCATED S27°W  
5364' FROM THE PROPOSED WELL HEAD.

Sheet 1aa of 10

NOTE:  
SEE SHEET 1HHH OF 10  
FOR BOTTOM HOLE INFORMATION.



CERTIFICATE

THIS IS TO CERTIFY THAT THE ABOVE PLAT WAS PREPARED AND LOCATION AS SHOWN WAS STAKED ON THE GROUND FROM FIELD NOTES OF ACTUAL SURVEYS MADE BY ME OR UNDER MY SUPERVISION AND THAT THE SAME ARE TRUE AND CORRECT TO THE BEST OF MY KNOWLEDGE AND BELIEF.

REGISTERED LAND SURVEYOR  
REGISTRATION NO. 17492  
STATE OF COLORADO  
05-14-12

REV: 05-14-12

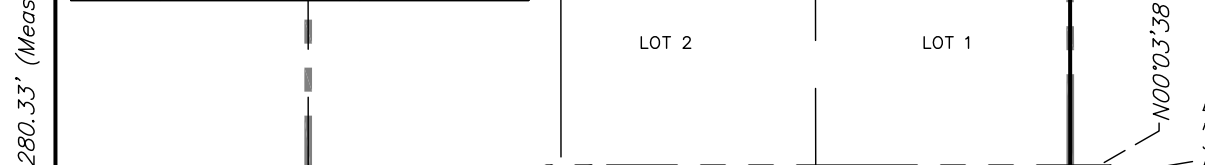
**UINTAH ENGINEERING & LAND SURVEYING**  
85 SOUTH 200 EAST - VERNAL, UTAH 84078  
(435) 789-1017

SCALE 1" = 1000'	DATE SURVEYED: 11-08-11	DATE DRAWN: 03-02-12
PARTY B.J. T.M. C.A.G.	REFERENCES G.L.O. PLAT	
WEATHER COLD	FILE Encana OIL & GAS (USA) INC.	

S89°51'11"W - 2632.48' (Meas.) N89°59'50"W - 2651.46' (Meas.)

True Position  
3" Alum. Cap  
0.6' High  
Lat: 39.593406°  
Long: 108.118025°  
1926 Brass Cap  
1.0' High, Scattered  
Stones  
Lat: 39.593406°  
Long: 108.108619°  
W.C.  
1917 Brass Cap  
0.7' High  
Lat: 39.590856°  
Long: 108.127361°  
NW Cor. Sec. 30  
1916 Brass Cap  
1.0' High, Pile of  
Stones, Steel Post  
Lat: 39.592061°  
Long: 108.108622°

LINE TABLE		
LINE	BEARING	LENGTH
L1	N00°10'29"E	495.12'
L2	S46°03'00"W	1141.14'



WF13D-19 125 596  
Elev. Ungraded Ground = 5825.3'  
Elev. Graded Ground = 5824.2'

NOTE:  
SEE SHEET 7A FOR EXISTING  
IMPROVEMENT WITHIN 400' OF THE  
PROPOSED WELL HEAD.

NOTE:  
THE TARGET BOTTOM HOLE FOR THIS WELL  
IS LOCATED IN LOT 10 OF SECTION 19,  
T5S, R95W, 6th P.M., AT 292' FSL 271'  
FEL. IT BEARS N09°55'12"E 2971.47'  
FROM THE SURFACE LOCATION.

True Position True Position  
S89°57'28"W - 2633.49' (Meas.) S89°57'02"W - 2653.73' (Meas.)  
W.C. 1917 Brass Cap, 2.0' High  
Lat: 39.578006°  
Long: 108.127353°  
W.C. 1917 Brass Cap  
1.5' High, Mound  
of Stones  
Lat: 39.576728°  
Long: 108.120925°  
2000 Alum. Cap  
Flush w/ Ground  
on 3/4" Rebar  
Lat: 39.578908°  
Long: 108.108601°  
C.C.  
SW Cor. Sec. 30  
1916 Brass Cap  
Bured 0.4' Deep  
Lat: 39.577559°  
Long: 108.108720°

- LEGEND:**
- └─┘ = 90° SYMBOL
  - = PROPOSED WELL HEAD.
  - ▲ = SECTION CORNERS LOCATED.
  - △ = SECTION CORNERS RE-ESTABLISHED.  
(Not Set on Ground)

NAD 83 (SURFACE LOCATION)	
LATITUDE = 39°35'05.38" (39.584828)	
LONGITUDE = 108°06'34.11" (108.109475)	
NAD 27 (SURFACE LOCATION)	
LATITUDE = 39°35'05.46" (39.584850)	
LONGITUDE = 108°06'31.83" (108.108842)	

PDOP = 1.9

323.40' (G.L.O.)  
N00°03'17"W - 2640.56' (Meas.)  
W 1/4 Sec. 36  
True Position

R 96  
W 95  
W

490.23' True Position  
N00°03'38"W - 2641.35' (Meas.)  
East 1/4 Corner  
Re-Established by  
Single Porportion  
Method.

True Position  
WEST -211.86' (G.L.O.)  
W.C.  
W 1/4 Cor. Sec. 30  
1917 Brass Cap 1.2'  
High, Pile of Stones  
Lat: 39.584798°  
Long: 108.107864°

491.27' True Position  
N00°03'38"W - 2641.35' (Meas.)  
500°05'17"W  
5279.47' (Meas.)  
SE Cor. Sec. 36  
1982 Brass Cap  
0.6' High  
Lat: 39.564418°  
Long: 108.108629°

# T5S, R95W, 6th P.M.

Encana OIL & GAS (USA) INC.

Well location, WF13D-19 I25 596 (TARGET BOTTOM HOLE), located as shown in Lot 8 of Section 19, T5S, R95W, 6th P.M., Garfield County, Colorado.

## BASIS OF ELEVATION

SPOT ELEVATION AT THE NORTHWEST CORNER OF SECTION 30, T5S, R95W, 6th P.M. TAKEN FROM THE FORKED GULCH QUADRANGLE, COLORADO, GARFIELD COUNTY, 7.5 MINUTE SERIES (TOPOGRAPHICAL MAP) PUBLISHED BY THE UNITED STATES DEPARTMENT OF THE INTERIOR, GEOLOGICAL SURVEY. SAID ELEVATION IS MARKED AS BEING 5966 FEET.

## BASIS OF BEARINGS

BASIS OF BEARINGS IS A G.P.S. OBSERVATION.

NOTE:

THE PROPOSED BOTTOM HOLE BEARS N09°55'12"E 2971.47' FROM THE PROPOSED WELL HEAD WHICH IS LOCATED IN LOT 4 (TRACT 37) OF SECTION 25, T5S, R96W, 6th P.M., AT 2157' FSL 244' FEL.

Sheet 1hhh of 10



## CERTIFICATE

THIS IS TO CERTIFY THAT THE ABOVE PLAT WAS PREPARED AND LOCATION AS SHOWN WAS STAKED ON THE GROUND FROM FIELD NOTES OF ACTUAL SURVEYS MADE BY ME OR UNDER MY SUPERVISION AND THAT THE SAME ARE TRUE AND CORRECT TO THE BEST OF MY KNOWLEDGE AND BELIEF.

REGISTERED LAND SURVEYOR  
REGISTRATION NO. 17492  
STATE OF COLORADO

REV: 08-30-12 T.B.  
REV: 05-14-12

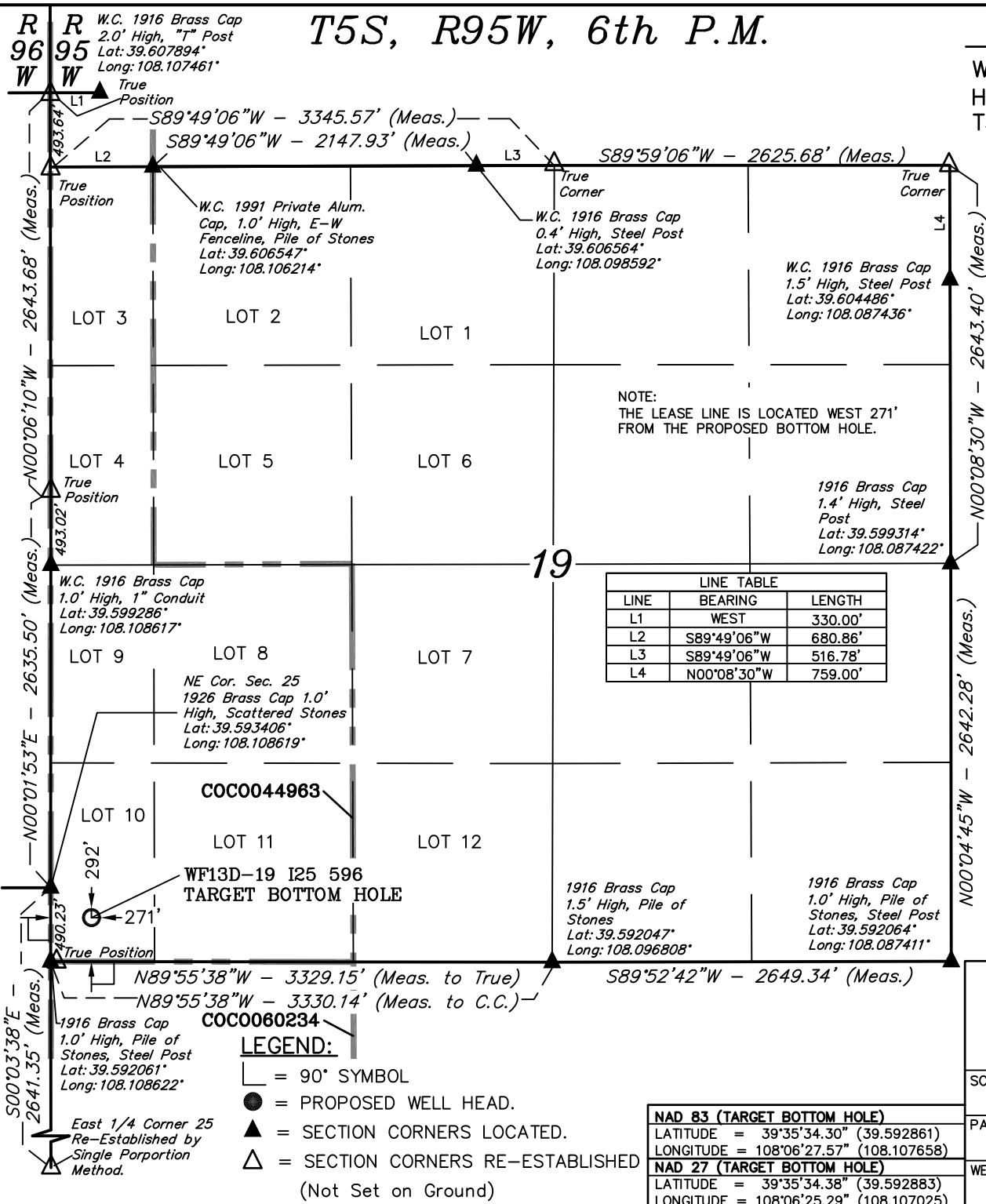
**UINTAH ENGINEERING & LAND SURVEYING**  
85 SOUTH 200 EAST - VERNAL, UTAH 84078  
(435) 789-1017

SCALE 1" = 1000'	DATE SURVEYED: 11-08-11	DATE DRAWN: 03-02-12
PARTY B.J. T.M. C.A.G.	REFERENCES G.L.O. PLAT	
WEATHER COLD	FILE Encana OIL & GAS (USA) INC.	

LINE TABLE		
LINE	BEARING	LENGTH
L1	WEST	330.00'
L2	S89°49'06"W	680.86'
L3	S89°49'06"W	516.78'
L4	N00°08'30"W	759.00'

NOTE:  
THE LEASE LINE IS LOCATED WEST 271'  
FROM THE PROPOSED BOTTOM HOLE.

19



### LEGEND:

- └ = 90° SYMBOL
- = PROPOSED WELL HEAD.
- ▲ = SECTION CORNERS LOCATED.
- △ = SECTION CORNERS RE-ESTABLISHED (Not Set on Ground)

<b>NAD 83 (TARGET BOTTOM HOLE)</b>	
LATITUDE = 39°35'34.30"	(39.592861)
LONGITUDE = 108°06'27.57"	(108.107658)
<b>NAD 27 (TARGET BOTTOM HOLE)</b>	
LATITUDE = 39°35'34.38"	(39.592883)
LONGITUDE = 108°06'25.29"	(108.107025)

R 96 W  
R 95 W  
W.C. 1916 Brass Cap  
2.0' High, "T" Post  
Lat: 39.607894'  
Long: 108.107461'

493.64' (Meas.)  
493.02' (Meas.)  
490.23' (Meas.)  
5000.3'38"E - 2641.35' (Meas.)  
N00°06'10"W - 2643.68' (Meas.)  
N00°01'53"E - 2635.50' (Meas.)  
N00°04'45"W - 2642.28' (Meas.)  
N00°08'30"W - 2643.40' (Meas.)  
S89°49'06"W - 3345.57' (Meas.)  
S89°49'06"W - 2147.93' (Meas.)  
S89°59'06"W - 2625.68' (Meas.)  
N89°55'38"W - 3329.15' (Meas. to True)  
N89°55'38"W - 3330.14' (Meas. to C.C.)  
S89°52'42"W - 2649.34' (Meas.)  
W.C. 1916 Brass Cap 1.0' High, E-W Fenciline, Pile of Stones  
Lat: 39.606547'  
Long: 108.106214'  
W.C. 1916 Brass Cap 0.4' High, Steel Post  
Lat: 39.606564'  
Long: 108.098592'  
W.C. 1916 Brass Cap 1.5' High, Steel Post  
Lat: 39.604486'  
Long: 108.087436'  
1916 Brass Cap 1.4' High, Steel Post  
Lat: 39.599314'  
Long: 108.087422'  
W.C. 1916 Brass Cap 1.0' High, 1" Conduit  
Lat: 39.599286'  
Long: 108.108617'  
NE Cor. Sec. 25  
1926 Brass Cap 1.0' High, Scattered Stones  
Lat: 39.593406'  
Long: 108.108619'  
1916 Brass Cap 1.5' High, Pile of Stones, Steel Post  
Lat: 39.592047'  
Long: 108.096808'  
1916 Brass Cap 1.0' High, Pile of Stones, Steel Post  
Lat: 39.592064'  
Long: 108.087411'  
1916 Brass Cap 1.0' High, Pile of Stones, Steel Post  
Lat: 39.592061'  
Long: 108.108622'  
East 1/4 Corner 25  
Re-Established by Single Porportion Method.