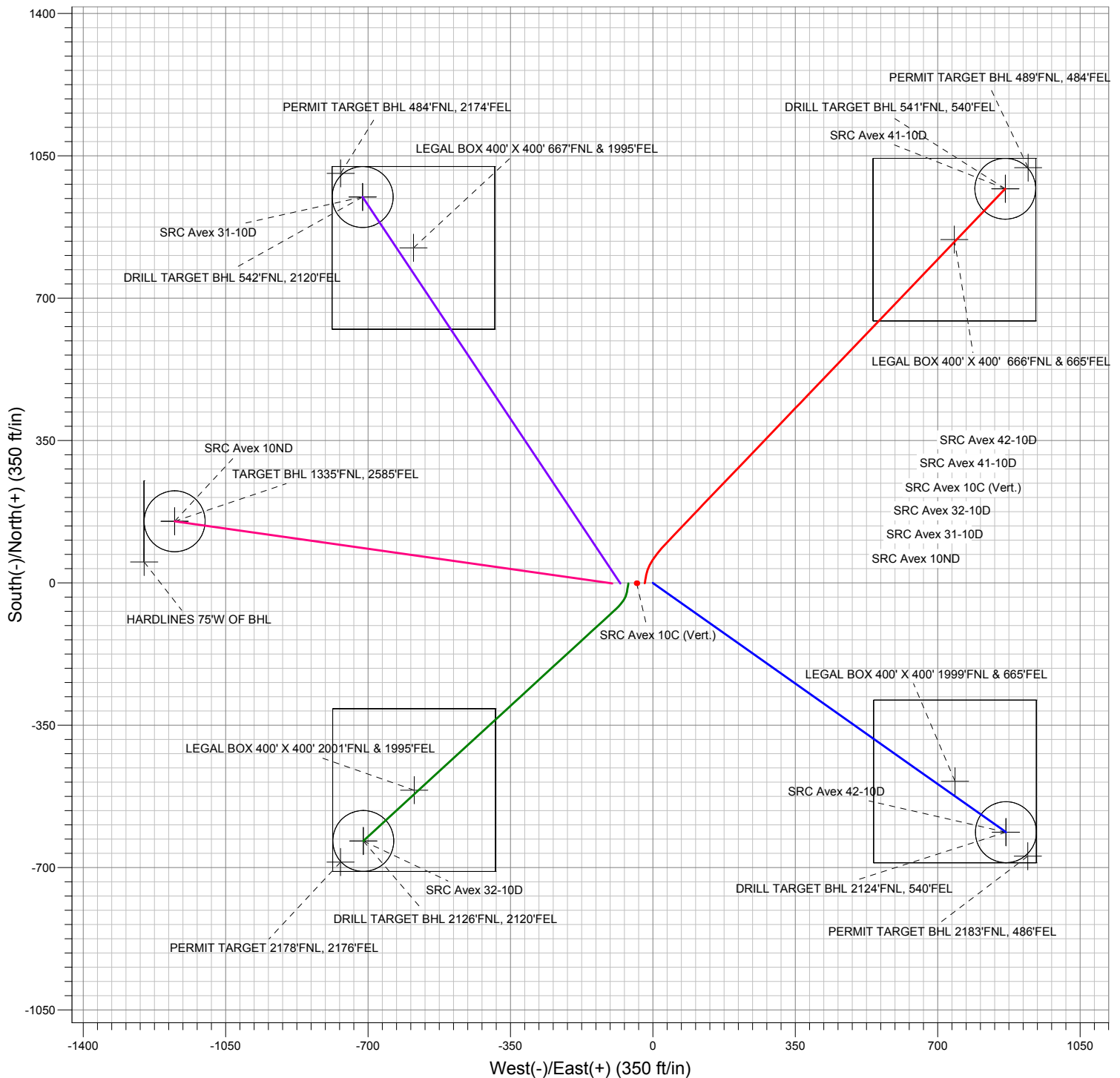


Surface Location: SRC Avex 42-10D Pad Sec.10-T4N-R68W

North American Datum 1983 , US State Plane 1983 , Colorado Northern Zone

Ground Elevation: 5038.0

+N/-S	+E/-W	Northing	Easting	Latitude	Longitude	Slot
0.0	0.0	1363966.98	3143626.35	40.331345	-104.984824	



ENSIGN
Directional