

T3N, R97W, 6th P.M.

WELL LOCATION, WILEY 22-3-97-1,
LOCATED AS SHOWN IN THE NW 1/4 NW
1/4 OF SECTION 22, T3N, R97W, 6TH
P.M. RIO BLANCO COUNTY, COLORADO.



1. Well footages are measured at right angles to the Section Lines.
2. Bearings are based on Global Positioning Satellite observations.
3. G.P.S. Operator: S. Young, (PDOP) = 1.9

THIS IS TO CERTIFY THAT THE ABOVE PLAT WAS
PREPARED FROM FIELD NOTES OF ACTUAL SURVEYS
MADE BY ME OR UNDER MY SUPERVISION AND THAT
THE SAME ARE TRUE AND CORRECT TO THE BEST
OF MY KNOWLEDGE AND BELIEF.

REGISTERED LAND SURVEYOR
REGISTRATION No. 3015
STATE OF UTAH • SURVEYOR

TRI STATE LAND SURVEYING & CONSULTING

180 NORTH VERNAL AVE. - VERNAL, UTAH 84078
(435) 781-2501

DATE SURVEYED:
05-11-12

SURVEYED BY: S.Y.

DATE DRAWN:
05-29-12

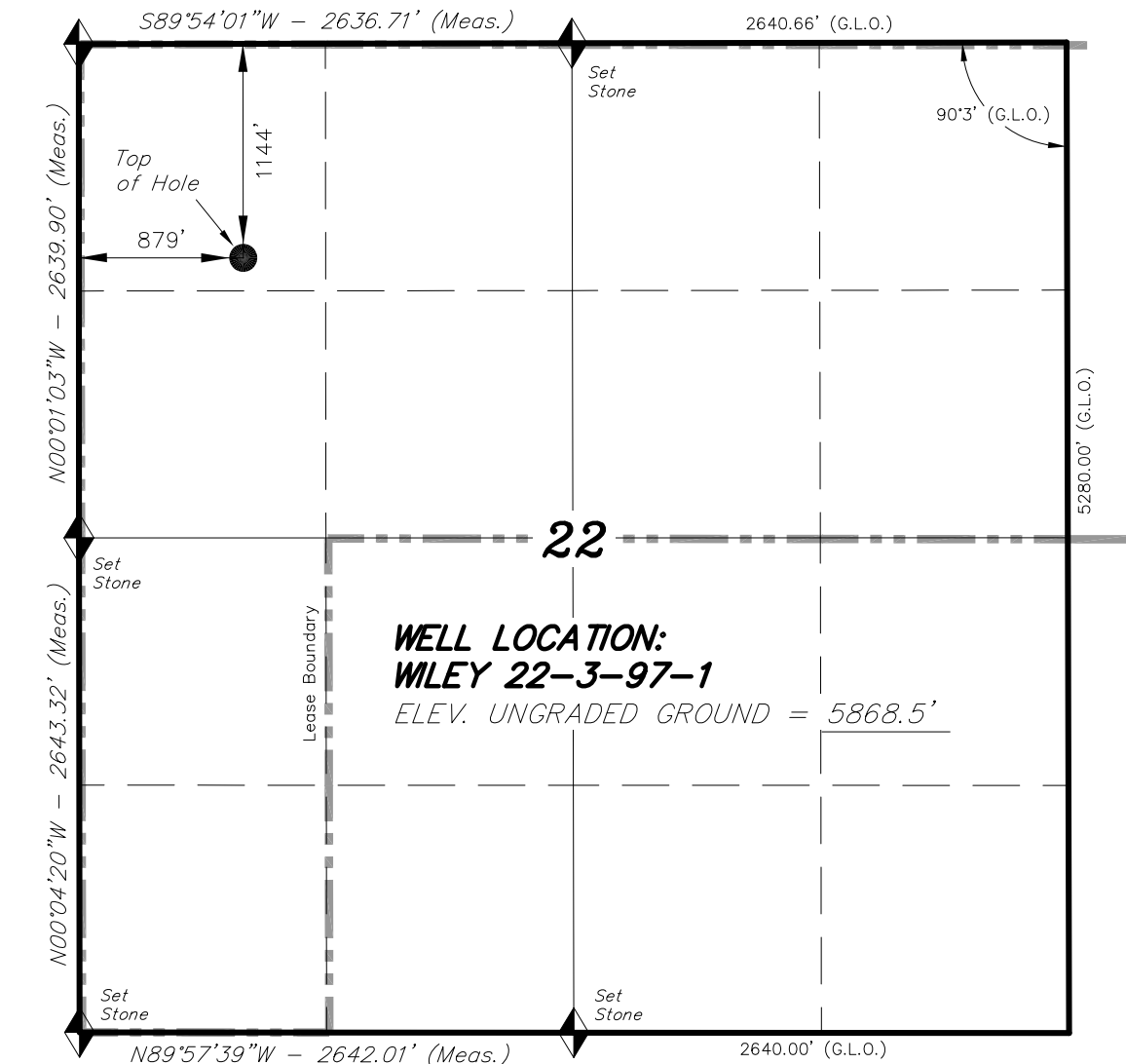
DRAWN BY: M.W.

REVISED:
08-02-12 - M.W.

SCALE: 1" = 1000'

SHEET
1a

Section Corner
(Proportioned using
Double Proportion
Method - Not Set)



 = SECTION CORNERS LOCATED

BASIS OF ELEV; U.S.G.S. 7-1/2 min QUAD
(Smizer Gulch)

NAD 83 (SURFACE LOCATION)	
LATITUDE	= 40°13'06.85" (40.218568°)
LONGITUDE	= 108°16'14.80" (108.270778°)

THIS IS TO CERTIFY THAT THE ABOVE PLAT WAS
PREPARED FROM FIELD NOTES OF ACTUAL SURVEYS
MADE BY ME OR UNDER MY SUPERVISION AND THAT
THE SAME ARE TRUE AND CORRECT TO THE BEST
OF MY KNOWLEDGE AND BELIEF.

08-02-12
30125

REGISTERED LAND SURVEYOR
REGISTRATION No. 30125
STATE OF IOWA
JAN 18 1880