

Encana OIL & GAS (USA) INC.
WELL PAD I25 596
LOCATED IN GARFIELD COUNTY, COLORADO
SECTION 25, T5S, R96W, 6th P.M.

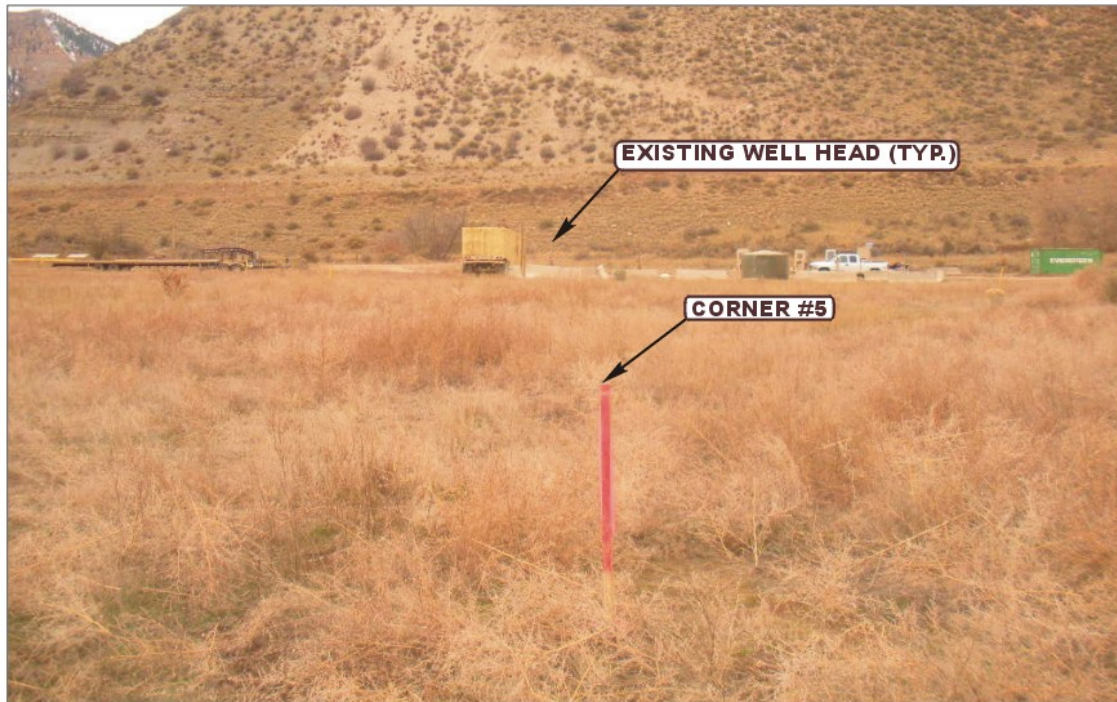


PHOTO: VIEW FROM CORNER #5 TO LOCATION STAKE

CAMERA ANGLE: NORTHWESTERLY



PHOTO: VIEW OF EXISTING ACCESS

CAMERA ANGLE: SOUTHEASTERLY



- Since 1964 -

U **E** **L** **S** **U**intah Engineering & Land Surveying
85 South 200 East Vernal, Utah 84078
(435) 789-1017 * FAX (435) 789-1813

LOCATION PHOTOS

03 **06** **12**
MONTH DAY YEAR

TAKEN BY: B.E.B. DRAWN BY: J.L.G. REVISED: 08-15-12

PHOTO
P1

Encana OIL & GAS (USA) INC.
WELL PAD I25 596
 LOCATED IN GARFIELD COUNTY, COLORADO
 SECTION 25, T5S, R96W, 6th P.M.



PHOTO: VIEW OF EXISTING WELL HEAD

CAMERA ANGLE: SOUTHERLY



PHOTO: VIEW OF EXISTING WELL HEAD

CAMERA ANGLE: NORTHERLY



U E L S Uintah Engineering & Land Surveying
 85 South 200 East Vernal, Utah 84078
 (435) 789-1017 * FAX (435) 789-1813

LOCATION PHOTOS

03 **06** **12**
 MONTH DAY YEAR

TAKEN BY: B.E.B. DRAWN BY: J.L.G. REVISED: 08-15-12

PHOTO
P2

Encana OIL & GAS (USA) INC.
WELL PAD I25 596
LOCATED IN GARFIELD COUNTY, COLORADO
SECTION 25, T5S, R96W, 6th P.M.

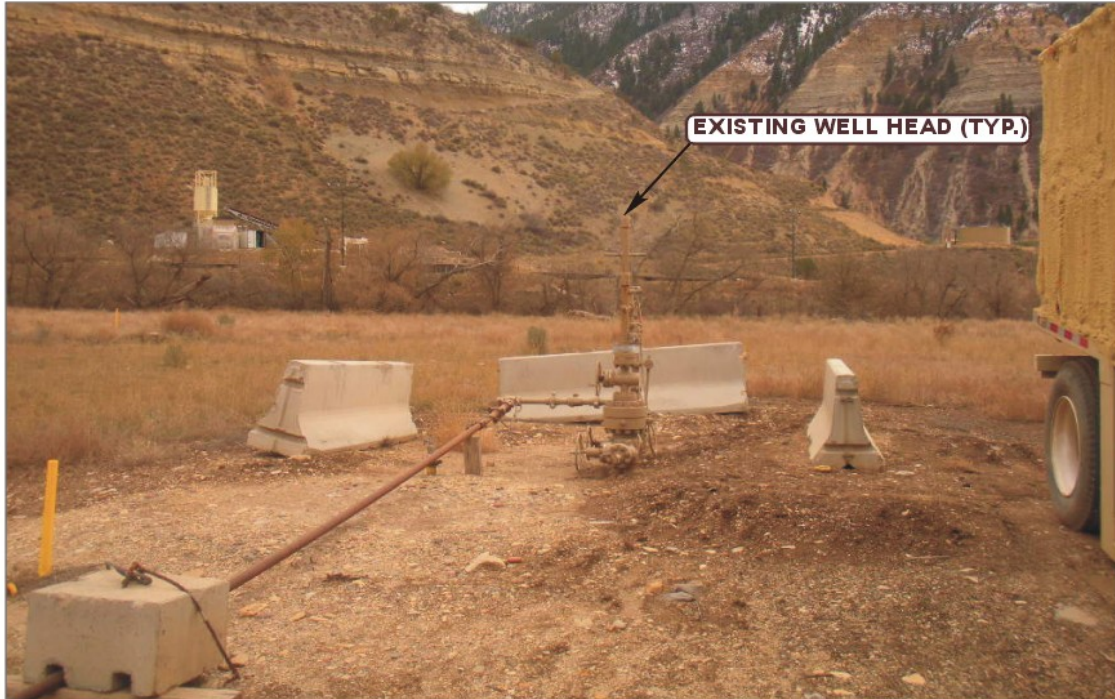


PHOTO: VIEW OF EXISTING WELL HEAD

CAMERA ANGLE: EASTERLY

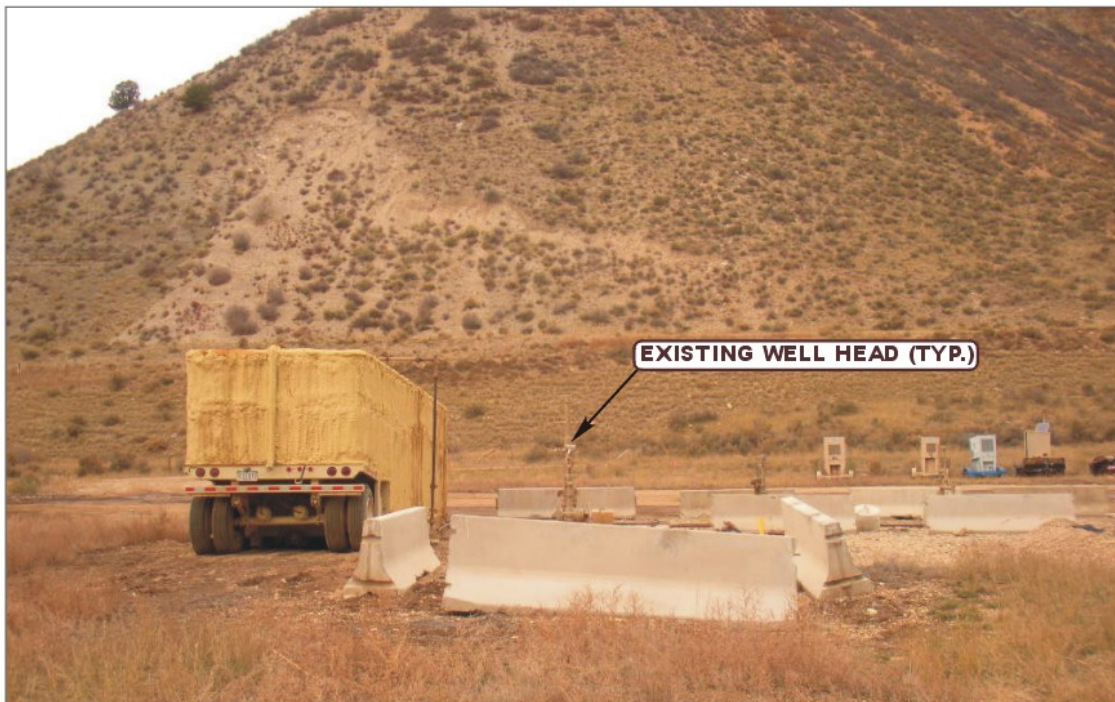


PHOTO: VIEW OF EXISTING WELL HEAD

CAMERA ANGLE: WESTERLY



- Since 1964 -

U.E.L.S. Uintah Engineering & Land Surveying
85 South 200 East Vernal, Utah 84078
(435) 789-1017 * FAX (435) 789-1813

LOCATION PHOTOS

03 06 12
MONTH DAY YEAR

TAKEN BY: B.E.B. DRAWN BY: J.L.G. REVISED: 08-15-12

PHOTO
P3