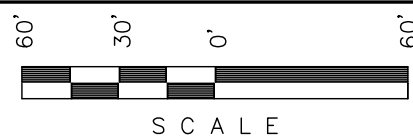


SCALE: 1" = 60'  
DATE: 11-21-11  
DRAWN BY: D.R.B.

Revised: 12-06-11 D.R.B.  
Revised: 03-29-12 D.R.B.  
Revised: 05-09-12 D.R.B.

# Encana OIL & GAS (USA) INC.

## CONSTRUCTION LAYOUT FOR WELL PAD I25 596 SECTION 25, T5S, R96W, 6th P.M. LOT 4 (Tract 37)



Sheet 3 of 10

### SWMP LEGEND:

ECB - EROSION CONTROL  
BLANKET  
LSd - LEVEL SPREADER  
SCE - STABILIZED  
CONSTRUCTION  
ENTRANCE  
SedR - SEDIMENT  
RESERVOIR  
SL - SLASH  
ST - SEDIMENT TRAP  
TB - TOE BERM  
VB - VEGETATED BUFFER  
W - WATTLE

### NOTE:

Wattle to be installed  
25' downhill of slash  
and topsoil stockpile.

F-4.9'  
El. 819.3'

1.18 Ac. to Deten. Pond #2  
4,000 cu.ft./Ac. Pad  
Vol. = 4,720 cu.ft.  
L= 65', W=30', D=4'

### LEGEND:

- 1 - OVERFLOW
- 2 - SEWER TANK
- 3 - LIFT STATION
- 4 - SEWER LINE
- 5 - WATER TANK  
(FIRE SUPPRESSION,  
2500 Gals.)
- 6 - FREEZER
- 7 - STORAGE
- 8 - GENERATOR
- 9 - FUEL
- 10 - TRANSFORMER
- 11 - BEAR PROOF  
TRASH CANS  
(2) 30 GALLON.
- 12 - WATER TANK

### NOTE:

Flare Pit is to  
be located a min.  
of 100' from the  
Well Head.

### LEGEND:

LS - Lift Station  
G - Generator  
WT - Water Tank

Elev. Ungraded Ground At Center Loc. Pad = 5824.5'  
FINISHED GRADE ELEV. AT CENTER LOC. PAD = 5824.2'

UINTAH ENGINEERING & LAND SURVEYING  
85 So. 200 East \* Vernal, Utah 84078 \* (435) 789-1017

SCALE: 1" = 60'  
DATE: 03-29-12  
DRAWN BY: D.R.B.  
Revised: 05-09-12 D.R.B.

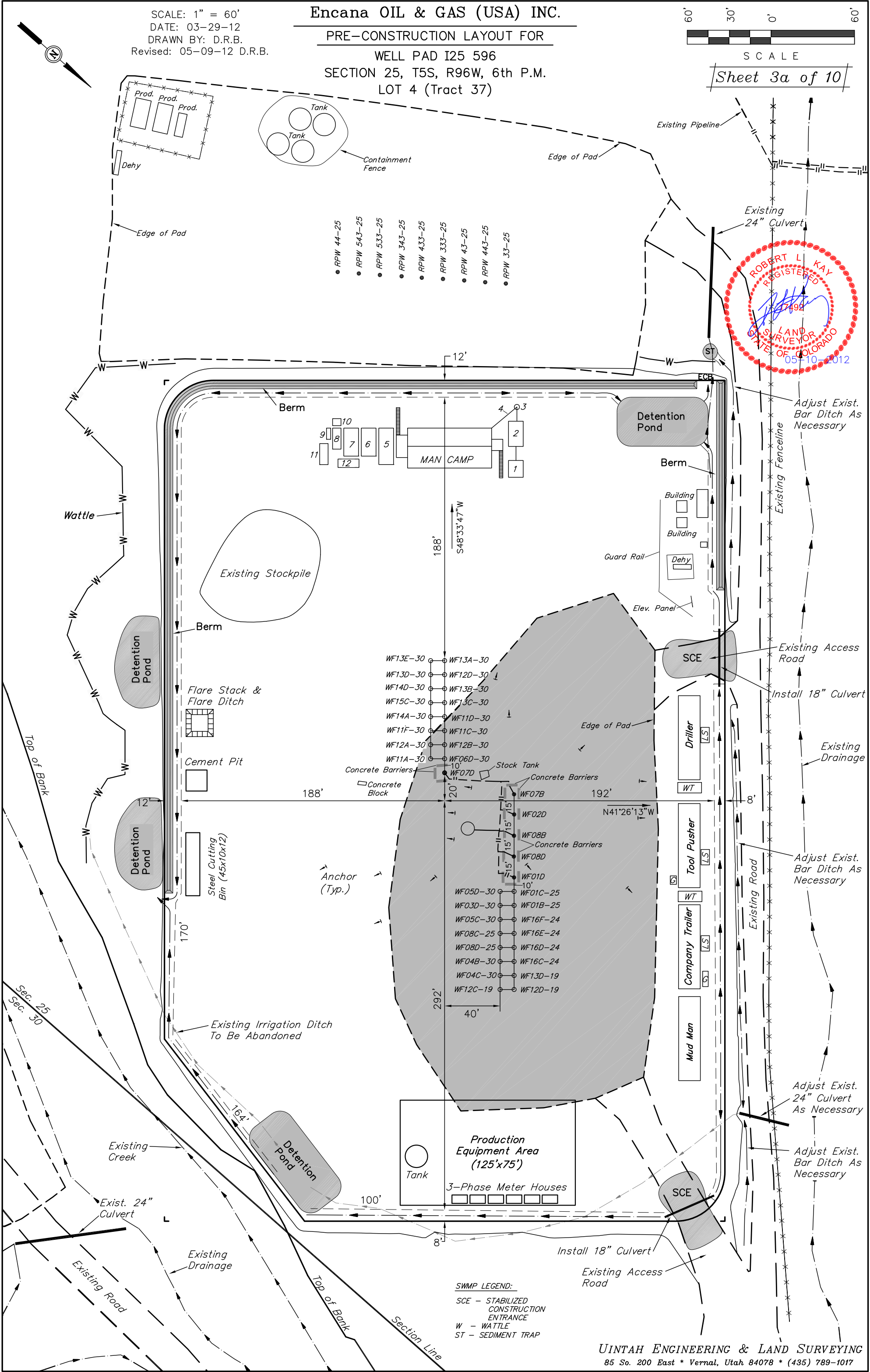
Encana OIL & GAS (USA) INC.

PRE-CONSTRUCTION LAYOUT FOR

WELL PAD I25 596  
SECTION 25, T5S, R96W, 6th P.M.  
LOT 4 (Tract 37)

60' 30' 0' 60'  
SCALE

Sheet 3a of 10



ROBERT L. KAY  
REGISTERED  
LAND SURVEYOR  
STATE OF COLORADO  
05410-2012

SWMP LEGEND:  
SCE - STABILIZED  
CONSTRUCTION  
ENTRANCE  
W - WATTLE  
ST - SEDIMENT TRAP

UINTAH ENGINEERING & LAND SURVEYING  
85 So. 200 East \* Vernal, Utah 84078 \* (435) 789-1017

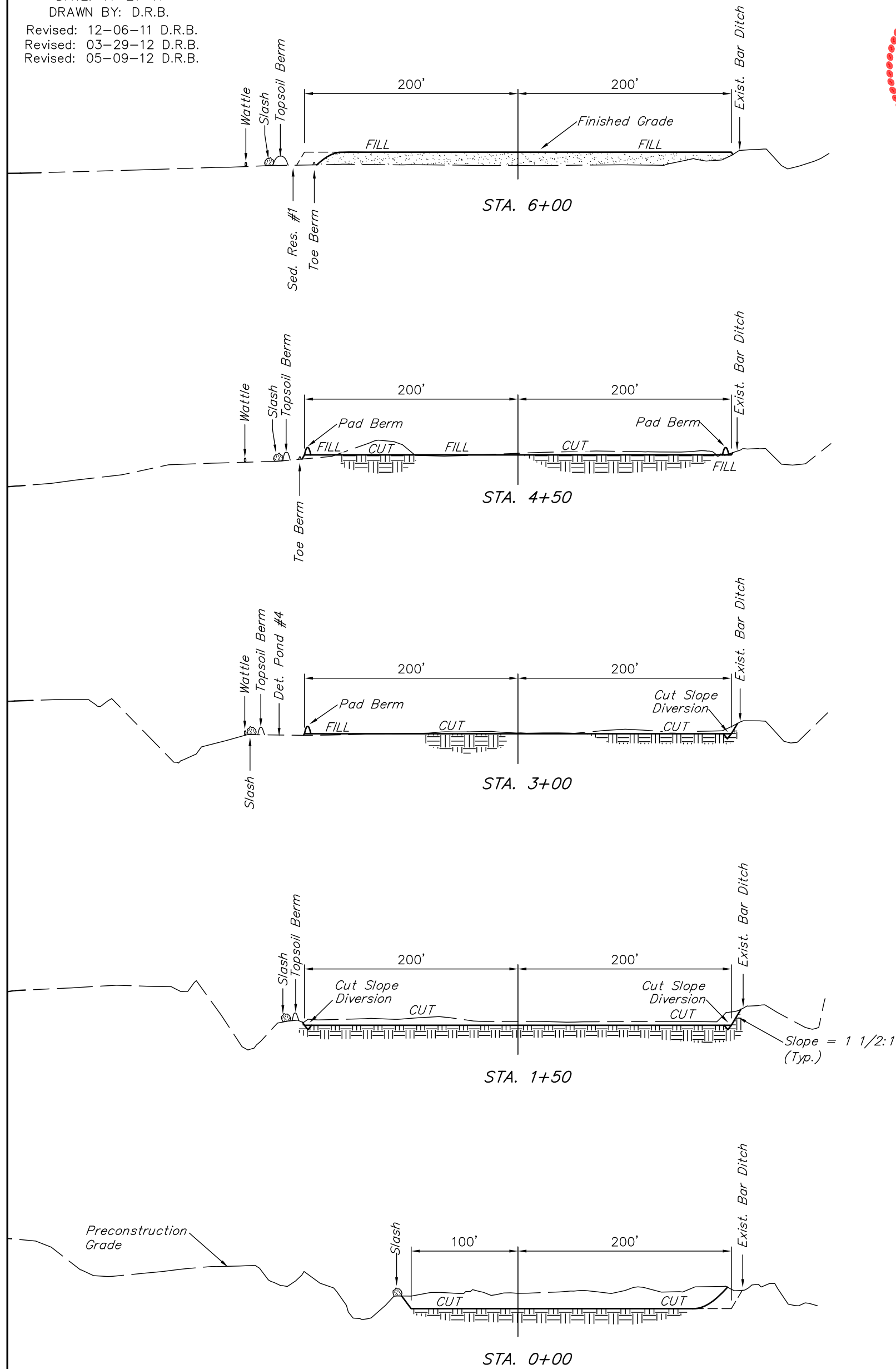


Encana OIL & GAS (USA) INC.  
CONSTRUCTION LAYOUT CROSS SECTION FOR  
WELL PAD I25 596  
SECTION 25, T5S, R96W, 6th P.M.  
LOT 4 (Tract 37)

Sheet 4 of 10

1" = 40'  
X-Section  
Scale  
1" = 100'

DATE: 11-21-11  
DRAWN BY: D.R.B.  
Revised: 12-06-11 D.R.B.  
Revised: 03-29-12 D.R.B.  
Revised: 05-09-12 D.R.B.



\* NOTE:  
FILL QUANTITY INCLUDES  
5% FOR COMPACTION

APPROXIMATE YARDAGES

(12") Topsoil Stripping = 6,940 Cu. Yds.  
(New Construction Only)  
Remaining Location = 7,460 Cu. Yds.  
TOTAL CUT = 14,400 CU.YDS.  
FILL = 7,460 CU.YDS.

EXCESS MATERIAL = 6,940 Cu. Yds.  
Topsoil = 6,940 Cu. Yds.  
EXCESS UNBALANCE = 0 Cu. Yds.  
(After Interim Rehabilitation)

Encana OIL & GAS (USA) INC.

TYPICAL RIG LAYOUT FOR

WELL PAD I25 596

SECTION 25, T5S, R96W, 6th P.M.

LOT 4 (Tract 37)

SCALE: 1" = 60'  
DATE: 03-29-12  
DRAWN BY: D.R.B.  
Revised: 05-09-12 D.R.B.

60' 30' 0' 60'  
SCALE  
Sheet 5 of 10

- RPW 44-25
- RPW 543-25
- RPW 533-25
- RPW 343-25
- RPW 433-25
- RPW 333-25
- RPW 43-25
- RPW 443-25
- RPW 33-25



LEGEND:

- 1 - OVERFLOW
- 2 - SEWER TANK
- 3 - LIFT STATION
- 4 - SEWER LINE
- 5 - WATER TANK (FIRE SUPPRESSION, 2500 Gals.)
- 6 - FREEZER
- 7 - STORAGE
- 8 - GENERATOR
- 9 - FUEL
- 10 - TRANSFORMER
- 11 - BEAR PROOF TRASH CANS (2) 30 GALLON.
- 12 - WATER TANK

LEGEND:

- ST - Septic Tank
- G - Generator
- WT - Water Tank

SWMP LEGEND:

- SCE - STABILIZED CONSTRUCTION ENTRANCE
- W - WATTLE
- ST - SEDIMENT TRAP

UINTAH ENGINEERING & LAND SURVEYING  
85 So. 200 East \* Vernal, Utah 84078 \* (435) 789-1017

Encana OIL & GAS (USA) INC.

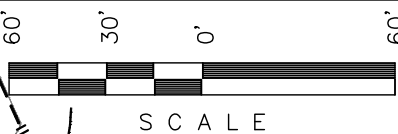
PRODUCTION SCHEMATIC FOR

WELL PAD I25 596

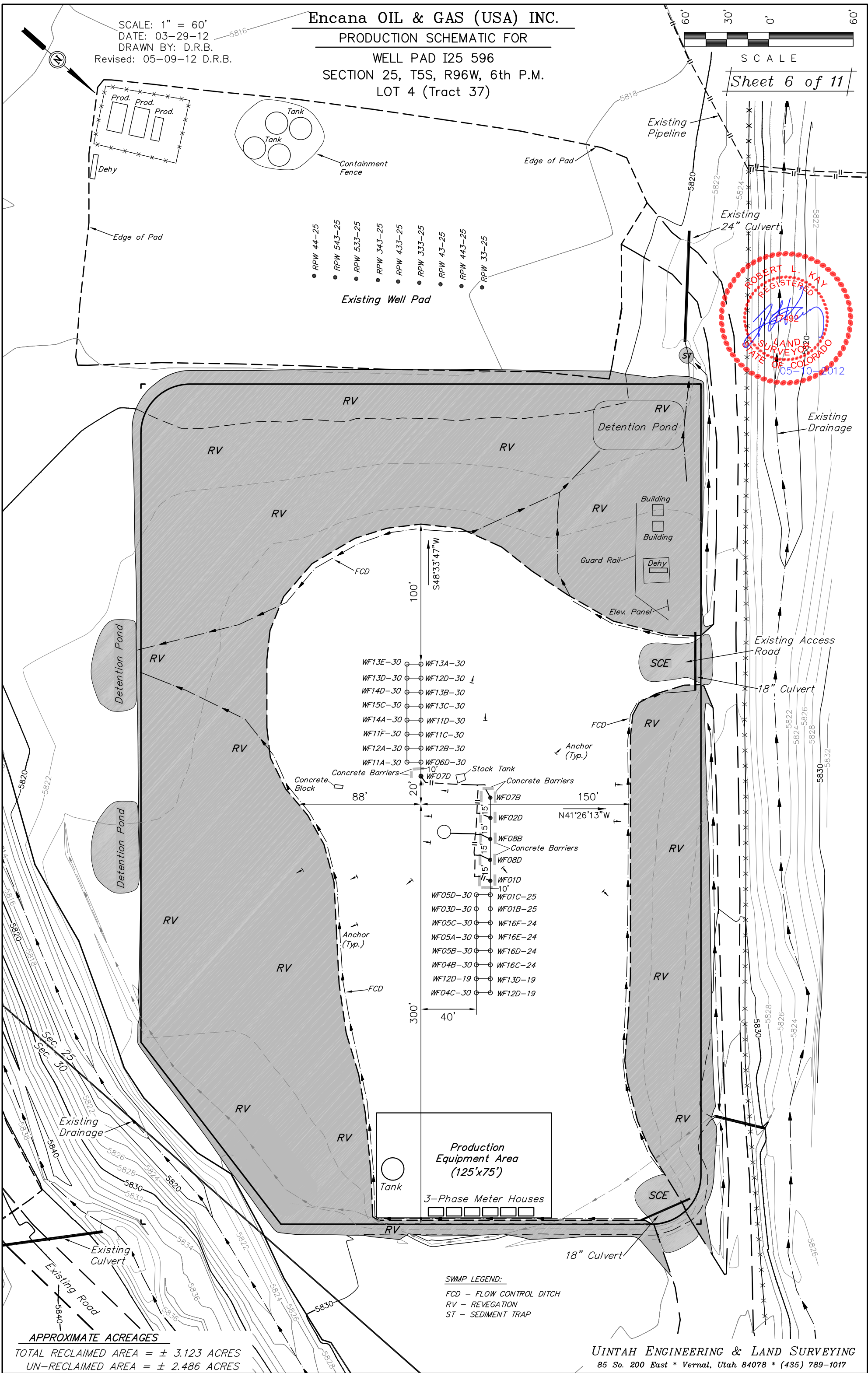
SECTION 25, T5S, R96W, 6th P.M.

LOT 4 (Tract 37)

SCALE: 1" = 60'  
DATE: 03-29-12  
DRAWN BY: D.R.B.  
Revised: 05-09-12 D.R.B.



Sheet 6 of 11



SWAMP LEGEND:

FCD - FLOW CONTROL DITCH  
RV - REVEGETATION  
ST - SEDIMENT TRAP

APPROXIMATE ACREAGES

TOTAL RECLAIMED AREA = ± 3.123 ACRES  
UN-RECLAIMED AREA = ± 2.486 ACRES

UINTAH ENGINEERING & LAND SURVEYING  
85 So. 200 East \* Vernal, Utah 84078 \* (435) 789-1017



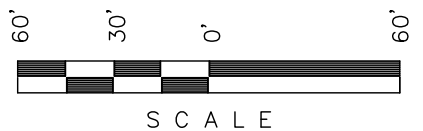
Encana OIL & GAS (USA) INC.

SURFACE DISTURBANCE AREA FOR

WELL PAD I25 596

SECTION 25, T5S, R96W, 6th P.M.

LOT 4 (Tract 37)



SCALE

Sheet 7 of 10

SCALE: 1" = 60'  
DATE: 02-27-12  
DRAWN BY: D.R.B.  
Revised: 05-09-12 D.R.B.

LEGEND:

- 1 - OVERFLOW
- 2 - SEWER TANK
- 3 - LIFT STATION
- 4 - SEWER LINE
- 5 - WATER TANK (FIRE SUPPRESSION, 2500 Gals.)
- 6 - FREEZER
- 7 - STORAGE
- 8 - GENERATOR
- 9 - FUEL
- 10 - TRANSFORMER
- 11 - BEAR PROOF TRASH CANS (2) 30 GALLON.
- 12 - WATER TANK

- RPW 44-25
- RPW 543-25
- RPW 533-25
- RPW 343-25
- RPW 433-25
- RPW 333-25
- RPW 43-25
- RPW 443-25
- RPW 33-25

LINE TABLE		
LINE	BEARING	LENGTH
L1	S39°52'49"E	49.26'
L2	S05°54'14"E	48.96'
L3	S00°13'59"W	41.86'
L4	S40°54'30"W	54.94'
L5	S69°16'35"W	40.04'
L6	N73°03'17"W	13.60'
L7	S46°12'32"W	19.79'
L8	S00°14'45"W	19.96'
L9	S25°52'13"W	63.23'
L10	S71°23'21"W	48.04'
L11	N85°46'37"W	28.89'
L12	S48°34'04"W	54.62'
L13	S03°21'48"W	59.97'
L14	S84°21'29"W	52.64'
L15	N47°58'05"W	54.17'
L16	N10°40'53"E	27.87'
L17	N56°29'41"E	54.97'
L18	N84°49'45"E	30.34'

Flare Stack & Flare Ditch

Cement Pit

Steel Cutting Bin (45x10x12)

Existing Irrigation Ditch To Be Abandoned

WF13E-30 WF13A-30  
WF13D-30 WF12D-30  
WF14D-30 WF13B-30  
WF15C-30 WF13C-30  
WF14A-30 WF11D-30  
WF11F-30 WF11C-30  
WF12A-30 WF12B-30  
WF11A-30 WF06D-30  
WF07D

WF07B  
WF02D  
WF08B  
WF08D  
WF01D  
WF05D-30 WF01C-25  
WF03D-30 WF01B-25  
WF05C-30 WF16F-24  
WF08C-25 WF16E-24  
WF08D-25 WF16D-24  
WF04B-30 WF16C-24  
WF04C-30 WF13D-19  
WF12C-19 WF12D-19

Production Equipment Area (125'x75')

3-Phase Meter Houses

Topsoil Stockpile