

WELL LOCATION PLAT

T8N, R59W, 6th P.M.

NOBLE ENERGY, INC.

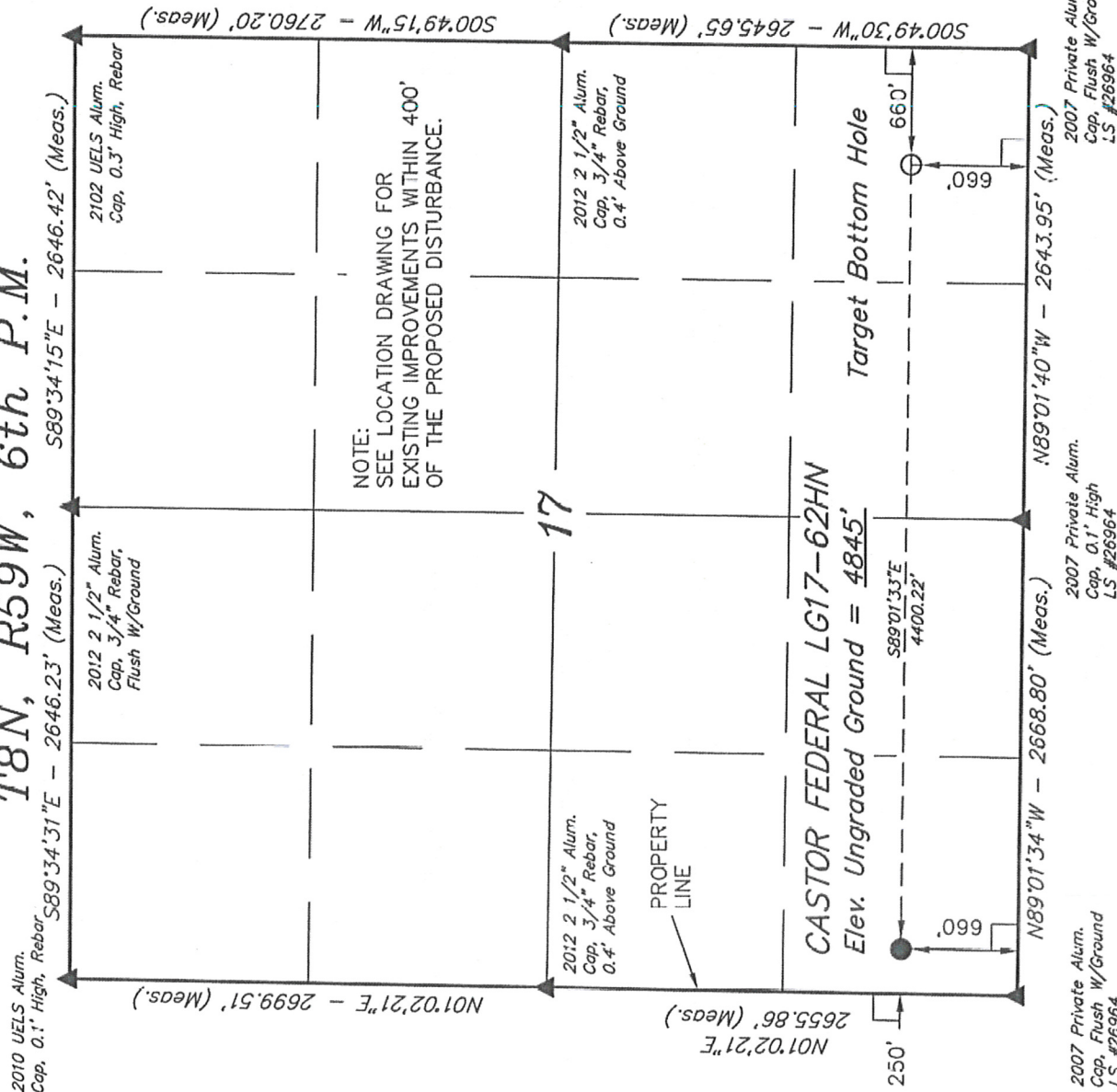
Well location, CASTOR FEDERAL LG17-62HN, located as shown in the SW 1/4 SW 1/4 of Section 17, T8N, R59W, 6th P.M., Weld County, Colorado.

BASIS OF ELEVATION

SPOT ELEVATION LOCATED AT THE NORTHEAST CORNER OF SECTION 15, T9N, R58W, 6th P.M. TAKEN FROM THE GATEHOOK SPRING, QUADRANGLE, COLORADO, WELD COUNTY, 7.5 MINUTE QUAD (TOPOGRAPHIC MAP) PUBLISHED BY THE UNITED STATES DEPARTMENT OF THE INTERIOR, GEOLOGICAL SURVEY. SAID ELEVATION IS MARKED AS BEING 4679 FEET.

BASIS OF BEARINGS

BASIS OF BEARINGS IS A G.P.S. OBSERVATION.



FEATURE TABLE

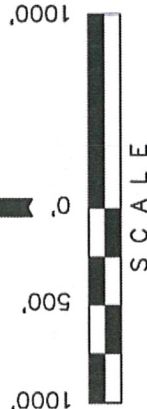
EXISTING FEATURE	DIRECTION	LENGTH
PROPERTY LINE	WEST	250'

PDOP = 1.8

LEGEND:

- = 90° SYMBOL
- = PROPOSED WELL HEAD.
- = SECTION CORNERS LOCATED.

NAD 83 (TARGET BOTTOM HOLE)	NAD 83 (SURFACE LOCATION)
LATITUDE = $40^{\circ}39'24.09''$ (40.656692)	LATITUDE = $40^{\circ}39'24.75''$ (40.656875)
LONGITUDE = $103^{\circ}59'36.85''$ (103.993569)	LONGITUDE = $104^{\circ}00'33.92''$ (104.009422)



CERTIFICATE

THIS IS TO CERTIFY THAT THE ABOVE PLAT WAS PREPARED FROM FIELD NOTES OF ACTUAL SURVEYS MADE BY ME OR UNDER MY SUPERVISION AND THAT THE SAME ARE TRUE AND CORRECT TO THE BEST OF MY KNOWLEDGE AND BELIEF.

REGISTERED LAND SURVEYOR
STATE OF COLORADO
REGISTRATION # 67432
EXPIRATION DATE 03-22-12

REVISED: 08-21-12 J.M.H.

UNTAH ENGINEERING & LAND SURVEYING
85 SOUTH 200 EAST - VERNAL, UTAH 84078
(435) 789-1017

SCALE 1" = 1000'	DATE SURVEYED: 03-16-12	DATE DRAWN: 03-19-12
PARTY DALLAS NIELSEN A.G. B.D.H.	REFERENCES G.L.O. PLAT	
WEATHER WARM	FILE	
		NOBLE ENERGY, INC.

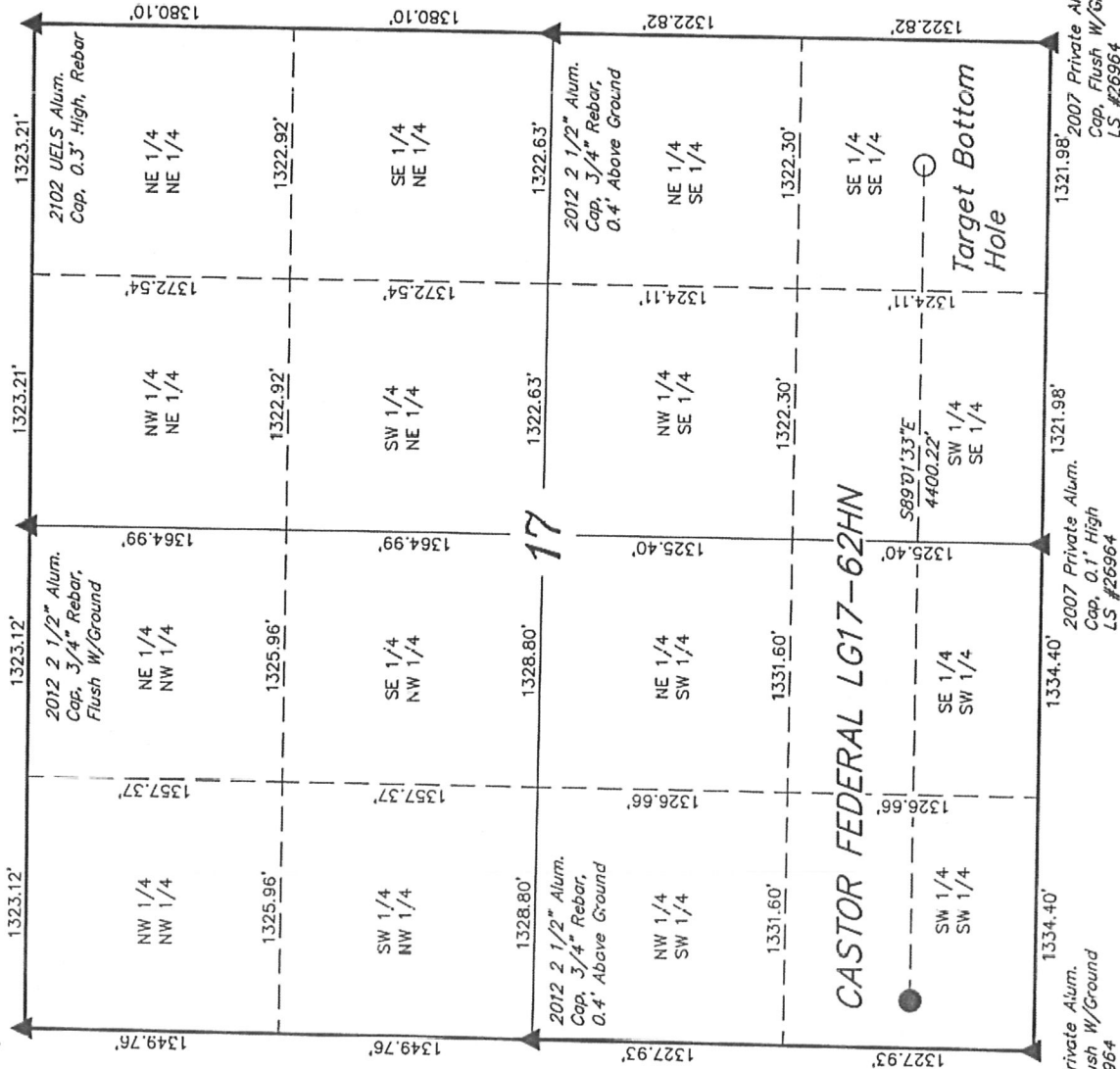
SITE SKETCH

T8N, R59W, 6th P.M.

NOBLE ENERGY, INC.

Well location, CASTOR FEDERAL LG17-62HN, located as shown in the SW 1/4 SW 1/4 of Section 17, T8N, R59W, 6th P.M., Weld County, Colorado.

2010 UELS Alum.
Cap. 0.1" High, Rebar



NO WELLS WITHIN SECTION

REVISED: 08-21-12 J.M.H.

UNTAH ENGINEERING & LAND SURVEYING
85 SOUTH 200 EAST - VERNAL, UTAH 84078
(435) 789-1017

SCALE 1" = 1000'	DATE SURVEYED: 03-16-12	DATE DRAWN: 03-20-12
PARTY DALLAS NIELSEN A.G. B.D.H.	REFERENCES G.L.O. PLAT	
WEATHER WARM	FILE	NOBLE ENERGY, INC.