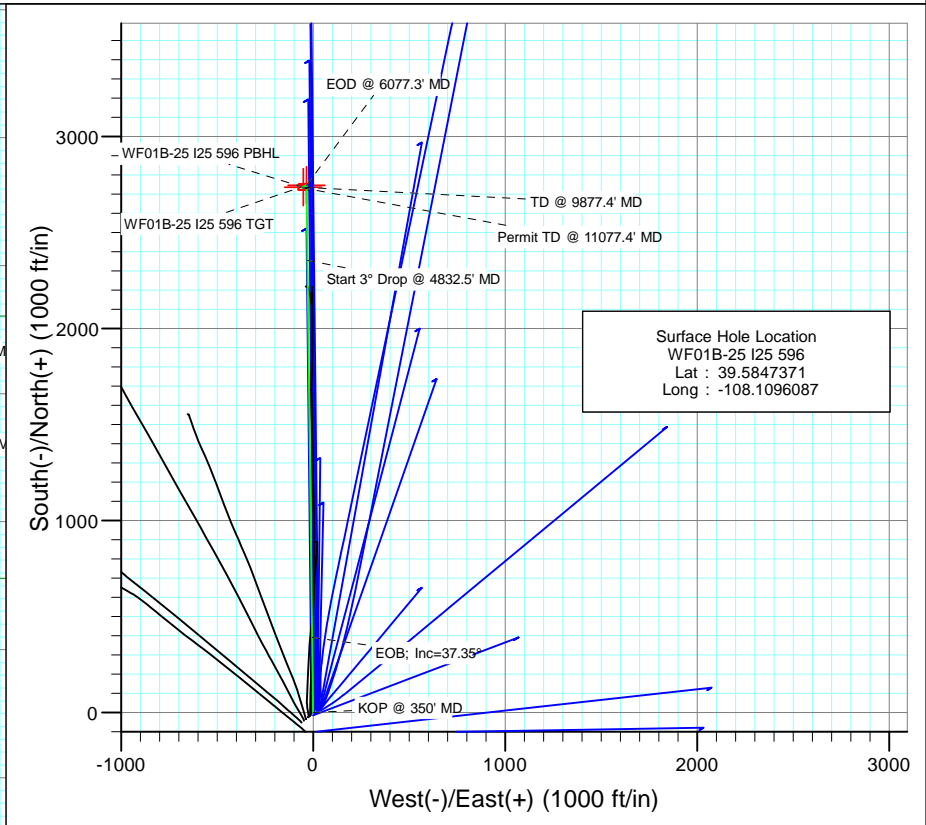


SECTION DETAILS										
Sec	MD	Inc	Azi	TVD	+N/-S	+E/-W	Dleg	TFace	V Sect	Target
1	0.0	0.00	0.00	0.0	0.0	0.0	0.00	0.00	0.0	
2	350.0	0.00	0.00	350.0	0.0	0.0	0.00	0.00	0.0	
3	1594.9	37.35	359.27	1508.6	391.5	-5.0	3.00	359.27	391.5	
4	4832.5	37.35	359.27	4082.4	2355.4	-29.8	0.00	0.00	2355.5	
5	6077.3	0.00	0.00	5241.0	2746.9	-34.8	3.00	180.00	2747.0	
6	6277.3	0.00	0.00	5441.0	2746.9	-34.8	0.00	0.00	2747.0	WF01B-25 I25 596 TGT
7	6409.0	0.33	239.66	5572.7	2746.7	-35.1	0.25	239.66	2746.8	
8	9777.4	0.33	239.66	8941.0	2736.9	-51.8	0.00	0.00	2737.4	WF01B-25 I25 596 PBHL
9	9877.4	0.33	239.66	9041.0	2736.6	-52.3	0.00	0.00	2737.1	
10	11077.4	0.33	239.66	10241.0	2733.2	-58.3	0.00	0.00	2733.8	



Surface Hole Location  
 WF01B-25 I25 596  
 Lat : 39.5847371  
 Long : -108.1096087

FORMATION TOP DETAILS		
TVDPath	MDPath	Formation
3393.0	3965.3	Washch G
5441.0	6277.3	Williams Fork
8941.0	9777.4	Rollins

Azimuths to True North  
 Magnetic North: 10.29°  
 Magnetic Field  
 Strength: 52183.9nT  
 Dip Angle: 65.76°  
 Date: 6/14/2012  
 Model: IGRF2010

Plan #1 WF01B-25 I25 596 125XXX; SC KB=22' @ 5846.0ft (Original Well Elev) North American Datum 1983 Well WF01B-25 I25 596, True North						
Type	Target	Azimuth	Origin	Type	N/S	E/W
TD	No Target (Freehand)	358.78	Slot	Slot	0.0	0.0
Name	TVD	+N/-S	+E/-W	Latitude	Longitude	
WF01B-25 I25 596 TGT	5441.0	2746.9	-34.8	39.5922783	-108.1097322	
WF01B-25 I25 596 PBHL	8941.0	2736.9	-51.8	39.5922509	-108.1097926	

## Planning Report

<b>Database:</b>	USA EDM 5000 Multi Users DB	<b>Local Co-ordinate Reference:</b>	Well WF01B-25 I25 596
<b>Company:</b>	EnCana Oil & Gas (USA) Inc	<b>TVD Reference:</b>	KB=22' @ 5846.0ft (Original Well Elev)
<b>Project:</b>	North Piceance	<b>MD Reference:</b>	KB=22' @ 5846.0ft (Original Well Elev)
<b>Site:</b>	I25 596	<b>North Reference:</b>	True
<b>Well:</b>	WF01B-25 I25 596	<b>Survey Calculation Method:</b>	Minimum Curvature
<b>Wellbore:</b>	OH		
<b>Design:</b>	Plan #1		

<b>Project</b>	North Piceance		
<b>Map System:</b>	US State Plane 1983	<b>System Datum:</b>	Mean Sea Level
<b>Geo Datum:</b>	North American Datum 1983		
<b>Map Zone:</b>	Colorado Central Zone		

<b>Site</b>	I25 596				
<b>Site Position:</b>		<b>Northing:</b>	1,648,435.29 ft	<b>Latitude:</b>	39.5847371
<b>From:</b>	Lat/Long	<b>Easting:</b>	2,264,601.34 ft	<b>Longitude:</b>	-108.1096087
<b>Position Uncertainty:</b>	0.0 ft	<b>Slot Radius:</b>	13.200 in	<b>Grid Convergence:</b>	-1.65 °

<b>Well</b>	WF01B-25 I25 596					
<b>Well Position</b>	<b>+N/-S</b>	0.0 ft	<b>Northing:</b>	1,648,435.29 ft	<b>Latitude:</b>	39.5847371
	<b>+E/-W</b>	0.0 ft	<b>Easting:</b>	2,264,601.34 ft	<b>Longitude:</b>	-108.1096087
<b>Position Uncertainty</b>		0.0 ft	<b>Wellhead Elevation:</b>	ft	<b>Ground Level:</b>	5,824.0 ft

<b>Wellbore</b>	OH				
<b>Magnetics</b>	<b>Model Name</b>	<b>Sample Date</b>	<b>Declination</b>	<b>Dip Angle</b>	<b>Field Strength</b>
			(°)	(°)	(nT)
	IGRF2010	6/14/2012	10.29	65.76	52,184

<b>Design</b>	Plan #1			
<b>Audit Notes:</b>				
<b>Version:</b>	<b>Phase:</b>	PLAN	<b>Tie On Depth:</b>	0.0
<b>Vertical Section:</b>	<b>Depth From (TVD)</b>	<b>+N/-S</b>	<b>+E/-W</b>	<b>Direction</b>
	(ft)	(ft)	(ft)	(°)
	0.0	0.0	0.0	358.78

Plan Sections										
Measured Depth (ft)	Inclination (°)	Azimuth (°)	Vertical Depth (ft)	+N/-S (ft)	+E/-W (ft)	Dogleg Rate (°/100ft)	Build Rate (°/100ft)	Turn Rate (°/100ft)	TFO (°)	Target
0.0	0.00	0.00	0.0	0.0	0.0	0.00	0.00	0.00	0.00	
350.0	0.00	0.00	350.0	0.0	0.0	0.00	0.00	0.00	0.00	
1,594.9	37.35	359.27	1,508.6	391.5	-5.0	3.00	3.00	0.00	359.27	
4,832.5	37.35	359.27	4,082.4	2,355.4	-29.8	0.00	0.00	0.00	0.00	
6,077.3	0.00	0.00	5,241.0	2,746.9	-34.8	3.00	-3.00	0.00	180.00	
6,277.3	0.00	0.00	5,441.0	2,746.9	-34.8	0.00	0.00	0.00	0.00	WF01B-25 I25 596 TC
6,409.0	0.33	239.66	5,572.7	2,746.7	-35.1	0.25	0.25	-91.41	239.66	
9,777.4	0.33	239.66	8,941.0	2,736.9	-51.8	0.00	0.00	0.00	0.00	WF01B-25 I25 596 PF
9,877.4	0.33	239.66	9,041.0	2,736.6	-52.3	0.00	0.00	0.00	0.00	
11,077.4	0.33	239.66	10,241.0	2,733.2	-58.3	0.00	0.00	0.00	0.00	

## Planning Report

<b>Database:</b>	USA EDM 5000 Multi Users DB	<b>Local Co-ordinate Reference:</b>	Well WF01B-25 I25 596
<b>Company:</b>	EnCana Oil & Gas (USA) Inc	<b>TVD Reference:</b>	KB=22' @ 5846.0ft (Original Well Elev)
<b>Project:</b>	North Piceance	<b>MD Reference:</b>	KB=22' @ 5846.0ft (Original Well Elev)
<b>Site:</b>	I25 596	<b>North Reference:</b>	True
<b>Well:</b>	WF01B-25 I25 596	<b>Survey Calculation Method:</b>	Minimum Curvature
<b>Wellbore:</b>	OH		
<b>Design:</b>	Plan #1		

Planned Survey									
Measured Depth (ft)	Inclination (°)	Azimuth (°)	Vertical Depth (ft)	+N/-S (ft)	+E/-W (ft)	Vertical Section (ft)	Dogleg Rate (°/100ft)	Build Rate (°/100ft)	Comments / Formations
0.0	0.00	0.00	0.0	0.0	0.0	0.0	0.00	0.00	
100.0	0.00	0.00	100.0	0.0	0.0	0.0	0.00	0.00	
200.0	0.00	0.00	200.0	0.0	0.0	0.0	0.00	0.00	
300.0	0.00	0.00	300.0	0.0	0.0	0.0	0.00	0.00	
350.0	0.00	0.00	350.0	0.0	0.0	0.0	0.00	0.00	KOP # 350' MD
400.0	1.50	359.27	400.0	0.7	0.0	0.7	3.00	3.00	
500.0	4.50	359.27	499.8	5.9	-0.1	5.9	3.00	3.00	
600.0	7.50	359.27	599.3	16.3	-0.2	16.3	3.00	3.00	
700.0	10.50	359.27	698.0	32.0	-0.4	32.0	3.00	3.00	
800.0	13.50	359.27	795.8	52.8	-0.7	52.8	3.00	3.00	
900.0	16.50	359.27	892.4	78.6	-1.0	78.6	3.00	3.00	
1,000.0	19.50	359.27	987.5	109.5	-1.4	109.5	3.00	3.00	
1,100.0	22.50	359.27	1,080.9	145.4	-1.8	145.4	3.00	3.00	
1,200.0	25.50	359.27	1,172.2	186.0	-2.4	186.0	3.00	3.00	
1,300.0	28.50	359.27	1,261.3	231.4	-2.9	231.4	3.00	3.00	
1,400.0	31.50	359.27	1,347.9	281.4	-3.6	281.4	3.00	3.00	
1,500.0	34.50	359.27	1,431.8	335.9	-4.3	335.9	3.00	3.00	
1,594.9	37.35	359.27	1,508.6	391.5	-5.0	391.5	3.00	3.00	EOB; Inc=37.35°
1,600.0	37.35	359.27	1,512.7	394.6	-5.0	394.6	0.00	0.00	
1,700.0	37.35	359.27	1,592.2	455.3	-5.8	455.3	0.00	0.00	
1,800.0	37.35	359.27	1,671.7	515.9	-6.5	516.0	0.00	0.00	
1,900.0	37.35	359.27	1,751.1	576.6	-7.3	576.6	0.00	0.00	
2,000.0	37.35	359.27	1,830.6	637.3	-8.1	637.3	0.00	0.00	
2,100.0	37.35	359.27	1,910.1	697.9	-8.8	697.9	0.00	0.00	
2,200.0	37.35	359.27	1,989.6	758.6	-9.6	758.6	0.00	0.00	
2,300.0	37.35	359.27	2,069.1	819.2	-10.4	819.3	0.00	0.00	
2,400.0	37.35	359.27	2,148.6	879.9	-11.1	879.9	0.00	0.00	
2,500.0	37.35	359.27	2,228.1	940.6	-11.9	940.6	0.00	0.00	
2,600.0	37.35	359.27	2,307.6	1,001.2	-12.7	1,001.3	0.00	0.00	
2,700.0	37.35	359.27	2,387.1	1,061.9	-13.5	1,061.9	0.00	0.00	
2,800.0	37.35	359.27	2,466.6	1,122.5	-14.2	1,122.6	0.00	0.00	
2,900.0	37.35	359.27	2,546.1	1,183.2	-15.0	1,183.2	0.00	0.00	
3,000.0	37.35	359.27	2,625.6	1,243.8	-15.8	1,243.9	0.00	0.00	
3,100.0	37.35	359.27	2,705.1	1,304.5	-16.5	1,304.6	0.00	0.00	
3,200.0	37.35	359.27	2,784.6	1,365.2	-17.3	1,365.2	0.00	0.00	
3,300.0	37.35	359.27	2,864.1	1,425.8	-18.1	1,425.9	0.00	0.00	
3,400.0	37.35	359.27	2,943.6	1,486.5	-18.8	1,486.5	0.00	0.00	
3,500.0	37.35	359.27	3,023.1	1,547.1	-19.6	1,547.2	0.00	0.00	
3,600.0	37.35	359.27	3,102.6	1,607.8	-20.4	1,607.9	0.00	0.00	
3,700.0	37.35	359.27	3,182.1	1,668.4	-21.1	1,668.5	0.00	0.00	
3,800.0	37.35	359.27	3,261.6	1,729.1	-21.9	1,729.2	0.00	0.00	
3,900.0	37.35	359.27	3,341.1	1,789.8	-22.7	1,789.8	0.00	0.00	
3,965.3	37.35	359.27	3,393.0	1,829.3	-23.2	1,829.4	0.00	0.00	Wastch G
4,000.0	37.35	359.27	3,420.6	1,850.4	-23.4	1,850.5	0.00	0.00	
4,100.0	37.35	359.27	3,500.1	1,911.1	-24.2	1,911.2	0.00	0.00	
4,200.0	37.35	359.27	3,579.6	1,971.7	-25.0	1,971.8	0.00	0.00	
4,300.0	37.35	359.27	3,659.1	2,032.4	-25.7	2,032.5	0.00	0.00	
4,400.0	37.35	359.27	3,738.6	2,093.1	-26.5	2,093.1	0.00	0.00	
4,500.0	37.35	359.27	3,818.1	2,153.7	-27.3	2,153.8	0.00	0.00	
4,600.0	37.35	359.27	3,897.6	2,214.4	-28.1	2,214.5	0.00	0.00	
4,700.0	37.35	359.27	3,977.1	2,275.0	-28.8	2,275.1	0.00	0.00	
4,800.0	37.35	359.27	4,056.6	2,335.7	-29.6	2,335.8	0.00	0.00	

## Planning Report

<b>Database:</b>	USA EDM 5000 Multi Users DB	<b>Local Co-ordinate Reference:</b>	Well WF01B-25 I25 596
<b>Company:</b>	EnCana Oil & Gas (USA) Inc	<b>TVD Reference:</b>	KB=22' @ 5846.0ft (Original Well Elev)
<b>Project:</b>	North Piceance	<b>MD Reference:</b>	KB=22' @ 5846.0ft (Original Well Elev)
<b>Site:</b>	I25 596	<b>North Reference:</b>	True
<b>Well:</b>	WF01B-25 I25 596	<b>Survey Calculation Method:</b>	Minimum Curvature
<b>Wellbore:</b>	OH		
<b>Design:</b>	Plan #1		

Planned Survey									
Measured Depth (ft)	Inclination (°)	Azimuth (°)	Vertical Depth (ft)	+N/-S (ft)	+E/-W (ft)	Vertical Section (ft)	Dogleg Rate (°/100ft)	Build Rate (°/100ft)	Comments / Formations
4,832.5	37.35	359.27	4,082.4	2,355.4	-29.8	2,355.5	0.00	0.00	Start 3° Drop @ 4832.5' MD
4,900.0	35.32	359.27	4,136.8	2,395.4	-30.3	2,395.5	3.00	-3.00	
5,000.0	32.32	359.27	4,219.9	2,451.0	-31.1	2,451.1	3.00	-3.00	
5,100.0	29.32	359.27	4,305.8	2,502.3	-31.7	2,502.4	3.00	-3.00	
5,200.0	26.32	359.27	4,394.2	2,548.9	-32.3	2,549.0	3.00	-3.00	
5,300.0	23.32	359.27	4,484.9	2,590.9	-32.8	2,591.0	3.00	-3.00	
5,400.0	20.32	359.27	4,577.8	2,628.1	-33.3	2,628.2	3.00	-3.00	
5,500.0	17.32	359.27	4,672.4	2,660.3	-33.7	2,660.4	3.00	-3.00	
5,600.0	14.32	359.27	4,768.6	2,687.6	-34.0	2,687.7	3.00	-3.00	
5,700.0	11.32	359.27	4,866.1	2,709.7	-34.3	2,709.9	3.00	-3.00	
5,800.0	8.32	359.27	4,964.6	2,726.8	-34.5	2,726.9	3.00	-3.00	
5,900.0	5.32	359.27	5,063.9	2,738.7	-34.7	2,738.8	3.00	-3.00	
6,000.0	2.32	359.27	5,163.7	2,745.3	-34.8	2,745.5	3.00	-3.00	
6,077.3	0.00	0.00	5,241.0	2,746.9	-34.8	2,747.0	3.00	-3.00	EOD @ 6077.3' MD
6,100.0	0.00	0.00	5,263.7	2,746.9	-34.8	2,747.0	0.00	0.00	
6,200.0	0.00	0.00	5,363.7	2,746.9	-34.8	2,747.0	0.00	0.00	
6,277.3	0.00	0.00	5,441.0	2,746.9	-34.8	2,747.0	0.00	0.00	Williams Fork
6,300.0	0.06	239.66	5,463.7	2,746.9	-34.8	2,747.0	0.25	0.25	
6,400.0	0.31	239.66	5,563.7	2,746.7	-35.1	2,746.9	0.25	0.25	
6,409.0	0.33	239.66	5,572.7	2,746.7	-35.1	2,746.8	0.25	0.25	
6,500.0	0.33	239.66	5,663.7	2,746.4	-35.6	2,746.6	0.00	0.00	
6,600.0	0.33	239.66	5,763.6	2,746.2	-36.1	2,746.3	0.00	0.00	
6,700.0	0.33	239.66	5,863.6	2,745.9	-36.6	2,746.0	0.00	0.00	
6,800.0	0.33	239.66	5,963.6	2,745.6	-37.1	2,745.7	0.00	0.00	
6,900.0	0.33	239.66	6,063.6	2,745.3	-37.6	2,745.5	0.00	0.00	
7,000.0	0.33	239.66	6,163.6	2,745.0	-38.1	2,745.2	0.00	0.00	
7,100.0	0.33	239.66	6,263.6	2,744.7	-38.6	2,744.9	0.00	0.00	
7,200.0	0.33	239.66	6,363.6	2,744.4	-39.0	2,744.6	0.00	0.00	
7,300.0	0.33	239.66	6,463.6	2,744.1	-39.5	2,744.3	0.00	0.00	
7,400.0	0.33	239.66	6,563.6	2,743.8	-40.0	2,744.1	0.00	0.00	
7,500.0	0.33	239.66	6,663.6	2,743.5	-40.5	2,743.8	0.00	0.00	
7,600.0	0.33	239.66	6,763.6	2,743.3	-41.0	2,743.5	0.00	0.00	
7,700.0	0.33	239.66	6,863.6	2,743.0	-41.5	2,743.2	0.00	0.00	
7,800.0	0.33	239.66	6,963.6	2,742.7	-42.0	2,742.9	0.00	0.00	
7,900.0	0.33	239.66	7,063.6	2,742.4	-42.5	2,742.7	0.00	0.00	
8,000.0	0.33	239.66	7,163.6	2,742.1	-43.0	2,742.4	0.00	0.00	
8,100.0	0.33	239.66	7,263.6	2,741.8	-43.5	2,742.1	0.00	0.00	
8,200.0	0.33	239.66	7,363.6	2,741.5	-44.0	2,741.8	0.00	0.00	
8,300.0	0.33	239.66	7,463.6	2,741.2	-44.5	2,741.5	0.00	0.00	
8,400.0	0.33	239.66	7,563.6	2,740.9	-45.0	2,741.3	0.00	0.00	
8,500.0	0.33	239.66	7,663.6	2,740.6	-45.5	2,741.0	0.00	0.00	
8,600.0	0.33	239.66	7,763.6	2,740.4	-46.0	2,740.7	0.00	0.00	
8,700.0	0.33	239.66	7,863.6	2,740.1	-46.5	2,740.4	0.00	0.00	
8,800.0	0.33	239.66	7,963.6	2,739.8	-47.0	2,740.1	0.00	0.00	
8,900.0	0.33	239.66	8,063.6	2,739.5	-47.5	2,739.9	0.00	0.00	
9,000.0	0.33	239.66	8,163.6	2,739.2	-48.0	2,739.6	0.00	0.00	
9,100.0	0.33	239.66	8,263.6	2,738.9	-48.5	2,739.3	0.00	0.00	
9,200.0	0.33	239.66	8,363.6	2,738.6	-49.0	2,739.0	0.00	0.00	
9,300.0	0.33	239.66	8,463.6	2,738.3	-49.5	2,738.8	0.00	0.00	
9,400.0	0.33	239.66	8,563.6	2,738.0	-50.0	2,738.5	0.00	0.00	
9,500.0	0.33	239.66	8,663.6	2,737.7	-50.5	2,738.2	0.00	0.00	
9,600.0	0.33	239.66	8,763.6	2,737.4	-50.9	2,737.9	0.00	0.00	

## Planning Report

<b>Database:</b>	USA EDM 5000 Multi Users DB	<b>Local Co-ordinate Reference:</b>	Well WF01B-25 I25 596
<b>Company:</b>	EnCana Oil & Gas (USA) Inc	<b>TVD Reference:</b>	KB=22' @ 5846.0ft (Original Well Elev)
<b>Project:</b>	North Piceance	<b>MD Reference:</b>	KB=22' @ 5846.0ft (Original Well Elev)
<b>Site:</b>	I25 596	<b>North Reference:</b>	True
<b>Well:</b>	WF01B-25 I25 596	<b>Survey Calculation Method:</b>	Minimum Curvature
<b>Wellbore:</b>	OH		
<b>Design:</b>	Plan #1		

Planned Survey									
Measured Depth (ft)	Inclination (°)	Azimuth (°)	Vertical Depth (ft)	+N/-S (ft)	+E/-W (ft)	Vertical Section (ft)	Dogleg Rate (°/100ft)	Build Rate (°/100ft)	Comments / Formations
9,700.0	0.33	239.66	8,863.6	2,737.2	-51.4	2,737.6	0.00	0.00	
9,777.4	0.33	239.66	8,941.0	2,736.9	-51.8	2,737.4	0.00	0.00	Rollins
9,800.0	0.33	239.66	8,963.6	2,736.9	-51.9	2,737.4	0.00	0.00	
9,877.4	0.33	239.66	9,041.0	2,736.6	-52.3	2,737.1	0.00	0.00	TD @ 9877.4' MD
9,900.0	0.33	239.66	9,063.6	2,736.6	-52.4	2,737.1	0.00	0.00	
10,000.0	0.33	239.66	9,163.6	2,736.3	-52.9	2,736.8	0.00	0.00	
10,100.0	0.33	239.66	9,263.6	2,736.0	-53.4	2,736.5	0.00	0.00	
10,200.0	0.33	239.66	9,363.6	2,735.7	-53.9	2,736.2	0.00	0.00	
10,300.0	0.33	239.66	9,463.6	2,735.4	-54.4	2,736.0	0.00	0.00	
10,400.0	0.33	239.66	9,563.6	2,735.1	-54.9	2,735.7	0.00	0.00	
10,500.0	0.33	239.66	9,663.6	2,734.8	-55.4	2,735.4	0.00	0.00	
10,600.0	0.33	239.66	9,763.6	2,734.5	-55.9	2,735.1	0.00	0.00	
10,700.0	0.33	239.66	9,863.6	2,734.3	-56.4	2,734.8	0.00	0.00	
10,800.0	0.33	239.66	9,963.6	2,734.0	-56.9	2,734.6	0.00	0.00	
10,900.0	0.33	239.66	10,063.6	2,733.7	-57.4	2,734.3	0.00	0.00	
11,000.0	0.33	239.66	10,163.6	2,733.4	-57.9	2,734.0	0.00	0.00	
11,077.4	0.33	239.66	10,241.0	2,733.2	-58.3	2,733.8	0.00	0.00	Permit TD @ 11077.4' MD

Targets									
Target Name	Dip Angle (°)	Dip Dir. (°)	TVD (ft)	+N/-S (ft)	+E/-W (ft)	Northing (ft)	Easting (ft)	Latitude	Longitude
WF01B-25 I25 596 TGT - hit/miss target - Shape - Point	0.00	0.00	5,441.0	2,746.9	-34.8	1,651,182.06	2,264,645.45	39.5922783	-108.1097322
WF01B-25 I25 596 PBH - plan hits target center - Rectangle (sides W30.0 H50.0 D0.0)	0.00	0.00	8,941.0	2,736.9	-51.8	1,651,172.58	2,264,628.14	39.5922509	-108.1097926

Formations						
Measured Depth (ft)	Vertical Depth (ft)	Name	Lithology	Dip (°)	Dip Direction (°)	
3,965.3	3,393.0	Wastch G				
6,277.3	5,441.0	Williams Fork				
9,777.4	8,941.0	Rollins				

Plan Annotations					
Measured Depth (ft)	Vertical Depth (ft)	+N/-S (ft)	+E/-W (ft)	Comment	
350.0	350.0	0.0	0.0	KOP # 350' MD	
1,594.9	1,508.6	391.5	-5.0	EOB; Inc=37.35°	
4,832.5	4,082.4	2,355.4	-29.8	Start 3° Drop @ 4832.5' MD	
6,077.3	5,241.0	2,746.9	-34.8	EOD @ 6077.3' MD	
9,877.4	9,041.0	2,746.9	-34.8	TD @ 9877.4' MD	
11,077.4	10,241.0	2,746.7	-35.1	Permit TD @ 11077.4' MD	