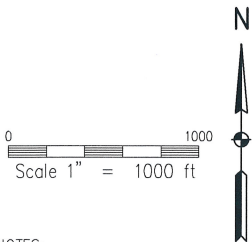
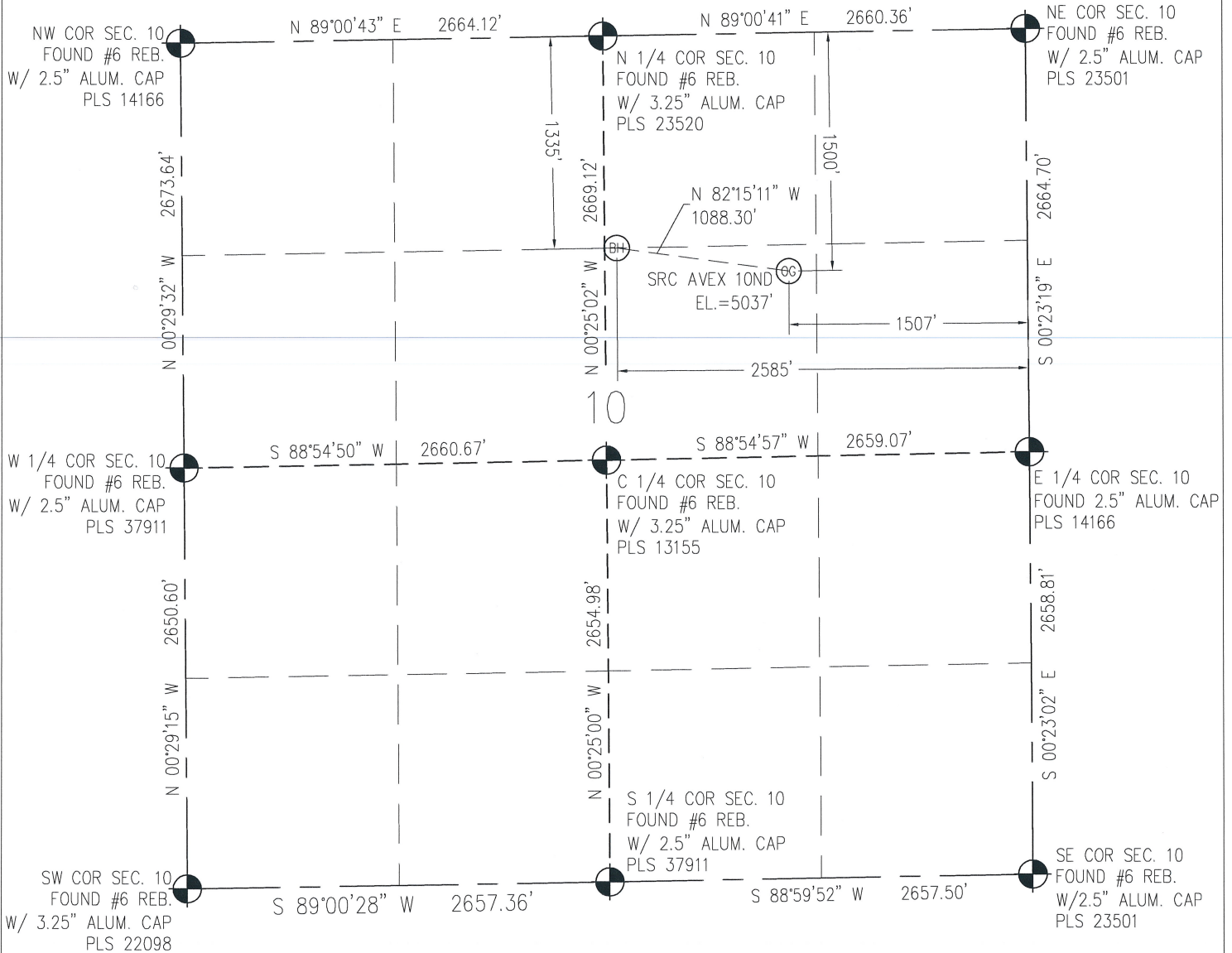


**WELL LOCATION CERTIFICATE**  
THIS MAP DOES NOT REPRESENT A BOUNDARY SURVEY

IN ACCORDANCE WITH A REQUEST FROM CRAIG RASMUSON - SYNERGY RESOURCES, BASELINE ENGINEERING CORP. HAS DETERMINED THE LOCATION OF THE SRC AVEX 10ND TO BE 1500' FNL, 1507' FEL, AS MEASURED AT NINETY (90) DEGREES FROM THE SECTION LINE OF SECTION 10, TOWNSHIP 4 NORTH, RANGE 68 WEST AND THE BOTTOM HOLE LOCATION TO BE 1335' FNL AND 2585' FEL OF SECTION 10, TOWNSHIP 4 NORTH, RANGE 68 WEST, 6TH PRINCIPAL MERIDIAN, WELD COUNTY, COLORADO.

I HEREBY CERTIFY THAT THIS WELL LOCATION CERTIFICATE WAS PREPARED BY ME, OR UNDER MY DIRECT SUPERVISION, THAT THE FIELD WORK WAS COMPLETED ON 9/13/2012, THAT IT IS NOT A LAND SURVEY PLAT OR AN IMPROVEMENT SURVEY PLAT, AND THAT IT IS NOT TO BE RELIED UPON FOR ESTABLISHMENT OF FENCE, BUILDING, OR OTHER FUTURE IMPROVEMENT LINES.

## NOTES:

- 1) LAT/LONG SHOWN ARE BASED ON A GPS OBSERVATION (NAD83).
- 2) BEARINGS SHOWN ARE GRID BEARINGS OF THE COLORADO STATE PLANE COORDINATE SYSTEM, NORTH ZONE, NORTH AMERICAN DATUM 1983/2007.
- 3) GROUND ELEVATIONS ARE BASED ON A GPS OBSERVATION (NAVD 88 DATUM).
- 4) ALL DISTANCES SHOWN ARE FIELD MEASURED UNLESS OTHERWISE NOTED.
- 5) THE NEAREST EXISTING WELL IS: LIBSACK #1 552' NORTHEAST.
- 6) IMPROVEMENTS: SEE LOCATION DRAWING EXHIBIT FOR ALL VISIBLE IMPROVEMENTS WITHIN 600' OF WELL HEAD.
- 7) SURFACE USE: HAY FIELD.

## LATITUDE &amp; LONGITUDE (NAD 83 SURFACE HOLE):

LATITUDE: N 40.331342°  
LONGITUDE: W 104.985183°  
PDOP: 2.1  
1/4, 1/4: SW1/4NE1/4  
NEAREST PROPERTY LINE: 1137' S

## BOTTOM HOLE:

LATITUDE: N 40.331761°  
LONGITUDE: W 104.989039°

## LEGEND

- - FOUND/SET SURVEY MONUMENT PER MONUMENT RECORD EXCEPTIONS NOTED.
- - CALCULATED SURVEY MONUMENT POSITION
- (C) - CALCULATED DIMENSION



Aaron A. Demo  
Professional Land Surveyor Registration No. 38285  
State of Colorado  
FOR AND ON BEHALF OF BASELINE ENGINEERING CORP.

Completed  
9/14/2012

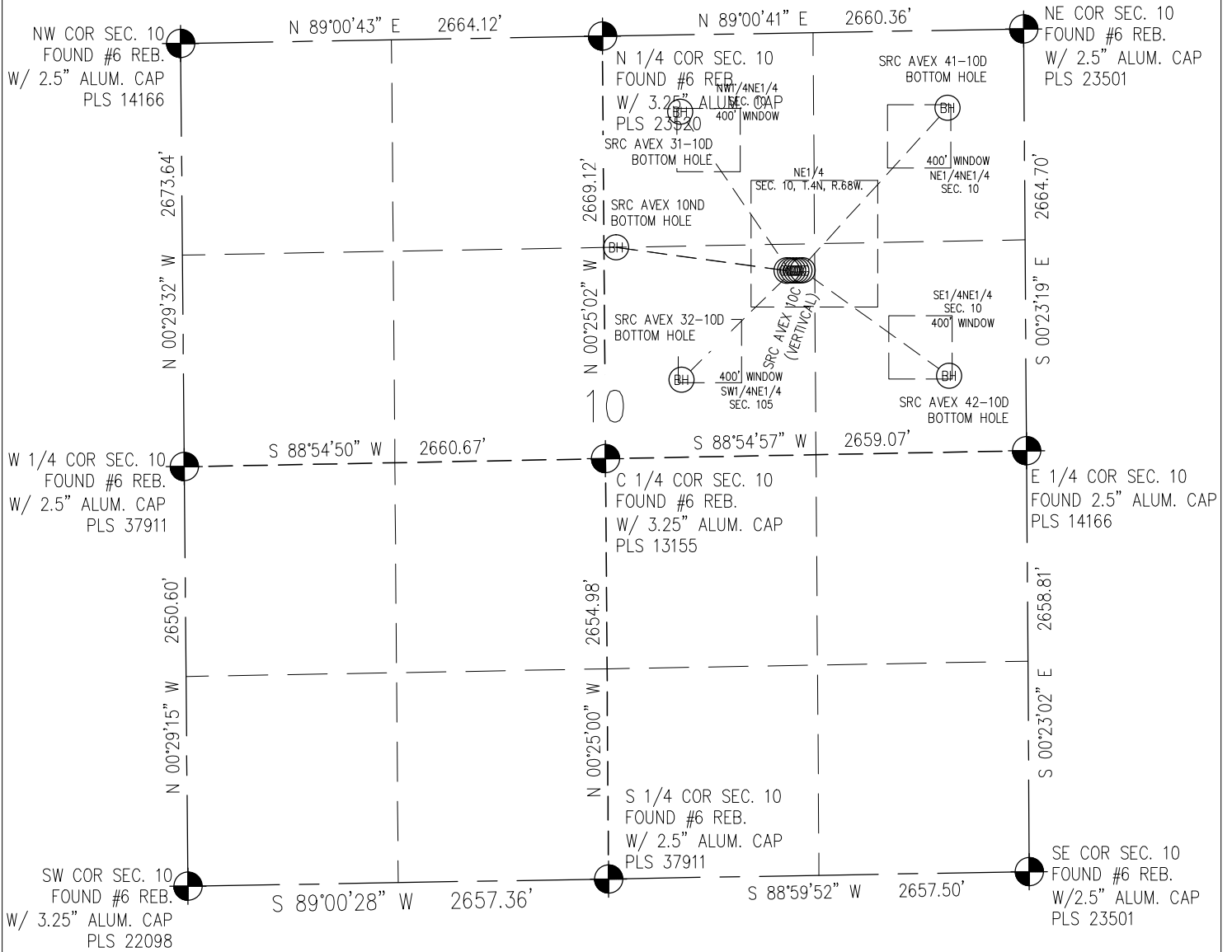
NOTICE: According to Colorado law you MUST commence any legal action based upon any defect in this W.L.C. within three years after you first discover such defect. In no event may any action based upon any defect in this W.L.C. be commenced more than ten years from this said date of the certification show hereon.

JOB # SYN4N68W10-01

# MULTIPLE WELL PAD EXHIBIT

THIS MAP DOES NOT REPRESENT A BOUNDARY SURVEY

SECTION 10  
TOWNSHIP 4 NORTH  
RANGE 68 WEST



## LEGEND

- FOUND/SET SURVEY MONUMENT PER MONUMENT RECORD EXCEPTIONS NOTED.
- CALCULATED SURVEY MONUMENT POSITION
- (C) - CALCULATED DIMENSION

0 1000  
Scale 1" = 1000 ft

## LOCATION DRAWING

SRC AVEX 10ND

SECTION 10  
TOWNSHIP 4 NORTH  
RANGE 68 WEST



NEAREST: BUILDING 1170' N, PUBLIC ROAD 1327' E, ABOVE GROUND UTILITY 1473' E,  
RAILROAD 1137' S, PROPERTY LINE 1137' S

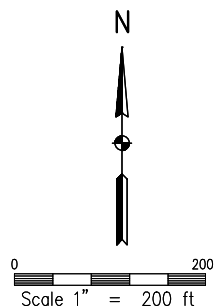
NO WATER WELLS OR DITCHES WITHIN 400'

### IMPROVEMENTS:

- (A) IRRIGATION SPRINKLER HEAD: 112' NORTHWEST
- (B) IRRIGATION SPRINKLER WHEEL TRACK: 64' SOUTH
- (C) IRRIGATION SPRINKLER WHEEL TRACK: 251' SOUTH
- (D) IRRIGATION SPRINKLER WHEEL TRACK: 438' SOUTH

### NOTE

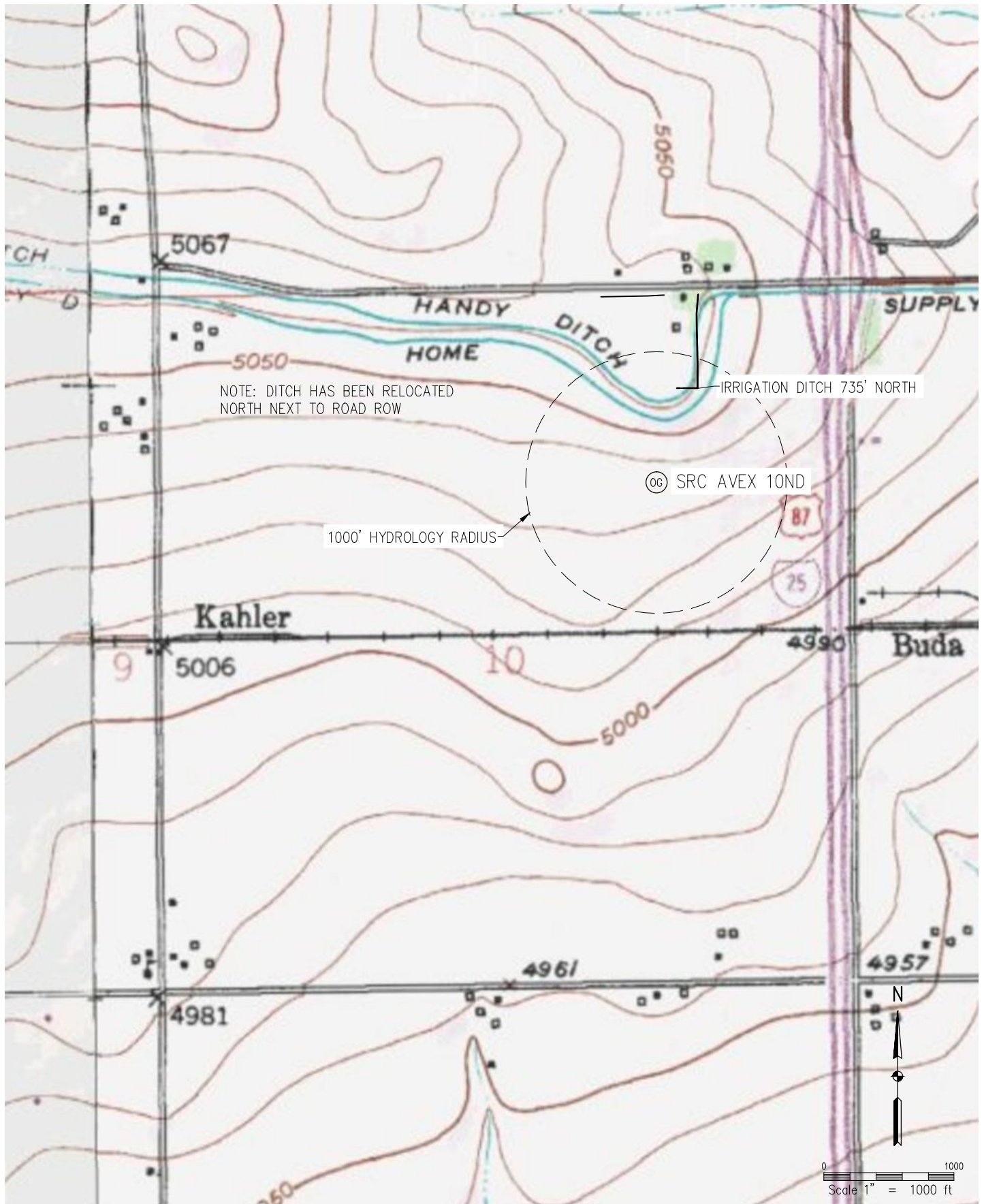
The size, type and location of underground utilities shown hereon are approximate, and are based on markings made by utility locate companies. It is not guaranteed that all utilities have been located. It shall be the responsibility of the contractor to verify the existence of all underground utilities in the area of the work before commencing new construction.



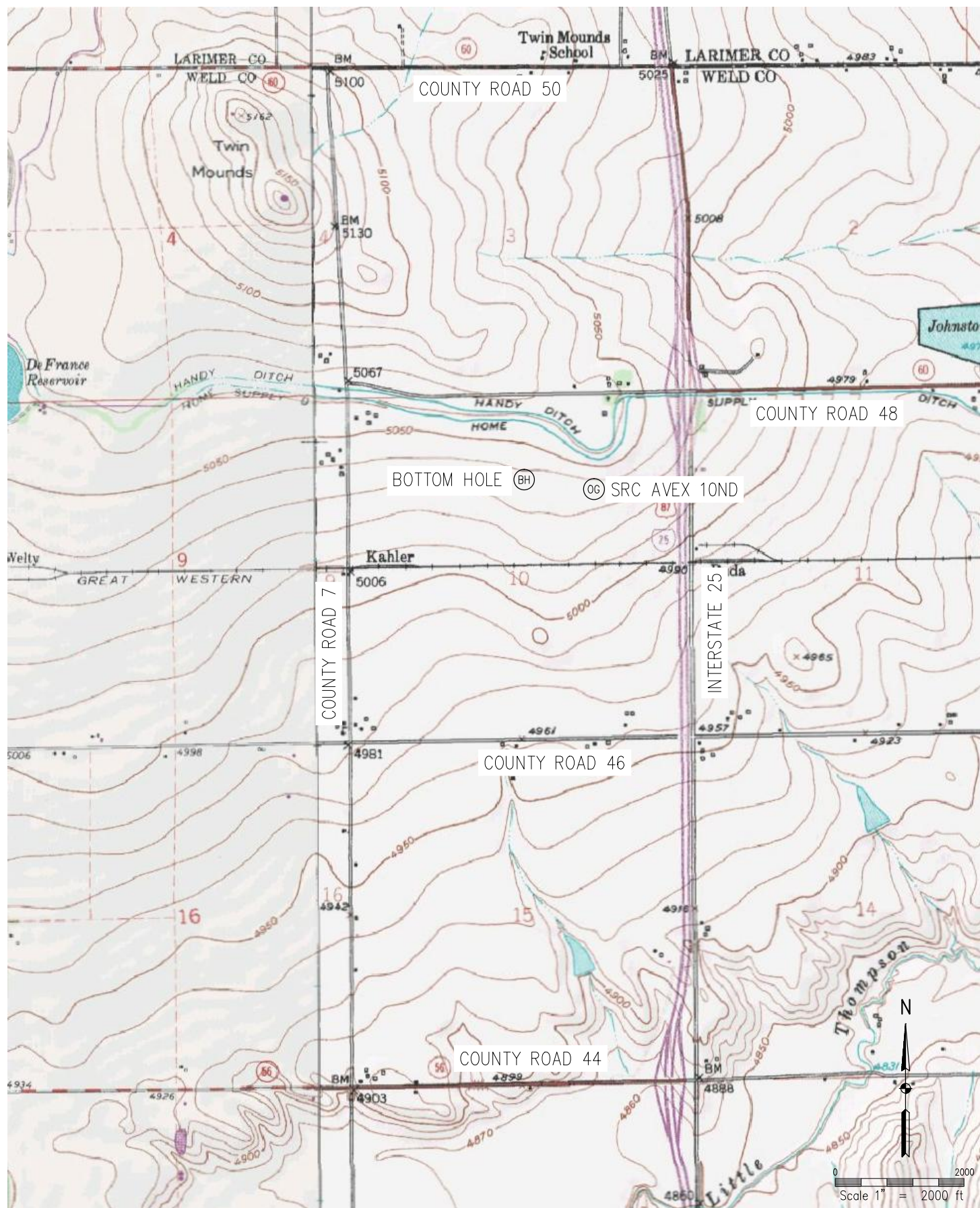
# HYDROLOGY MAP

SRC AVEX 10ND

SECTION 10  
TOWNSHIP 4 NORTH  
RANGE 68 WEST







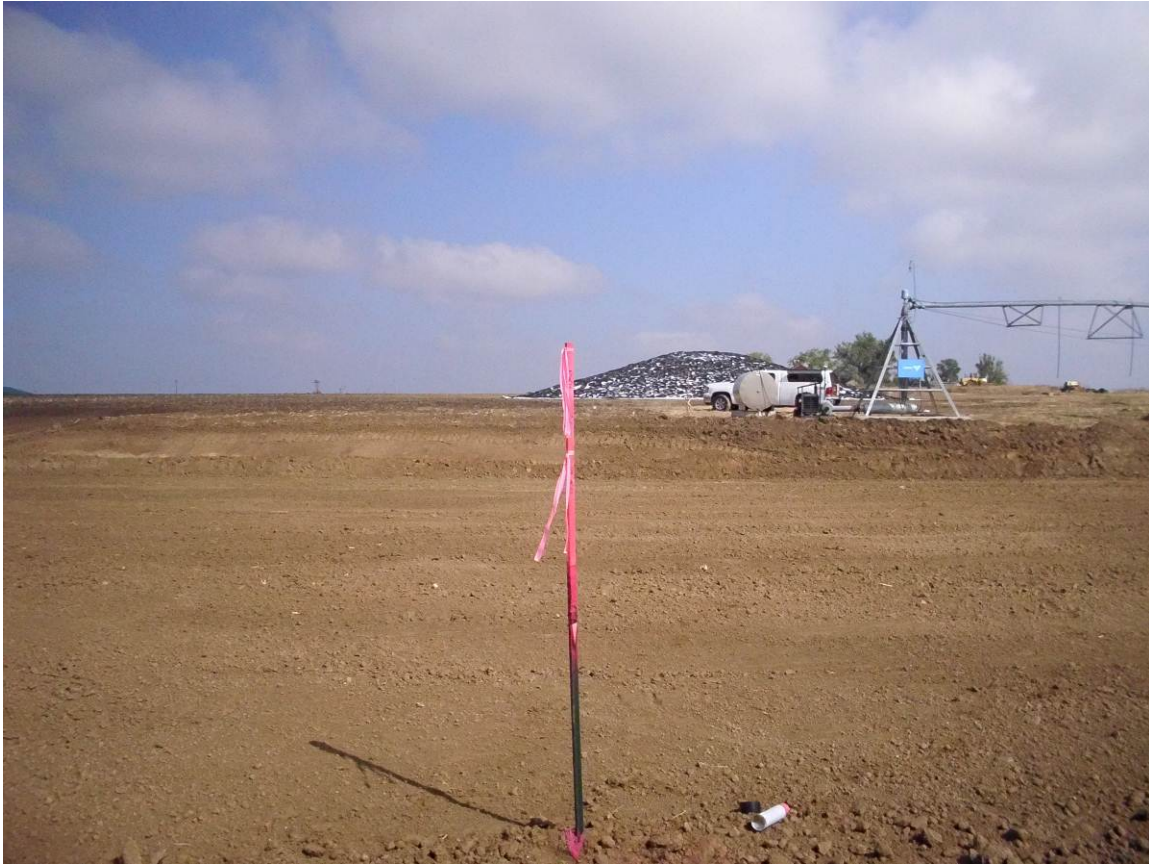
## WELL HEAD PHOTO EXHIBIT



**Figure 1 AVEX 10ND LOOKING WEST (SW1/4NE1/4 SEC10 T4N R68W, 9-13-12)**



## WELL HEAD PHOTO EXHIBIT



**Figure 2 AVEX 10ND LOOKING NORTH TOWARD ACCESS AND TANK BATTERY AREA  
(SW1/4NE1/4 SEC10 T4N R68W, 9-13-12)**

## WELL HEAD PHOTO EXHIBIT



**Figure 3 AVEX 10ND LOOKING EAST (SW1/4NE1/4 SEC10 T4N R68W, 9-13-12)**



## WELL HEAD PHOTO EXHIBIT



**Figure 4 AVEX 10ND LOOKING SOUTH (SW1/4NE1/4 SEC10 T4N R68W, 9-13-12)**