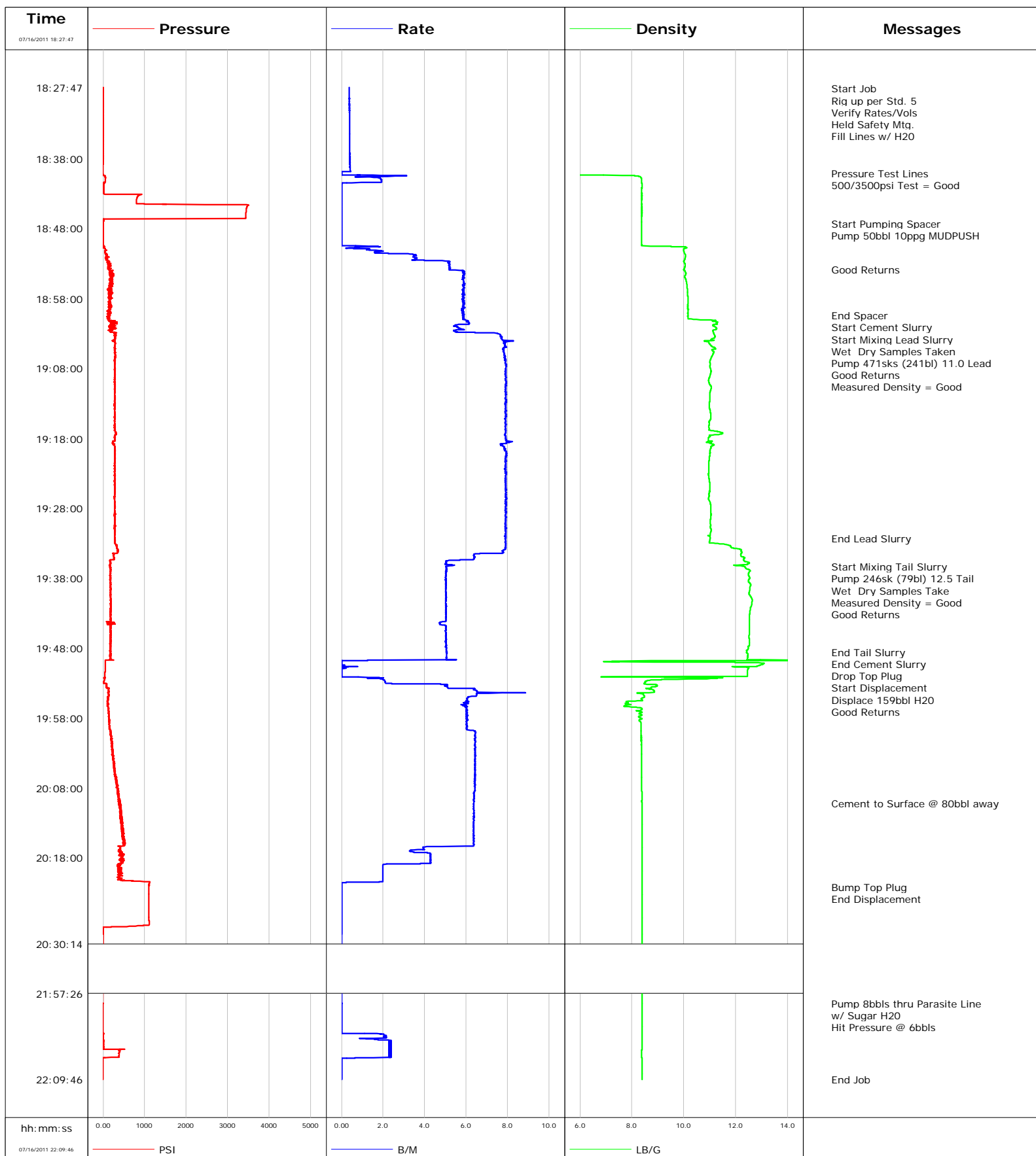


**Well** DW 8603F-33P  
**Field** Grand Vall  
**Engineer** B. Farnham  
**Country** United States

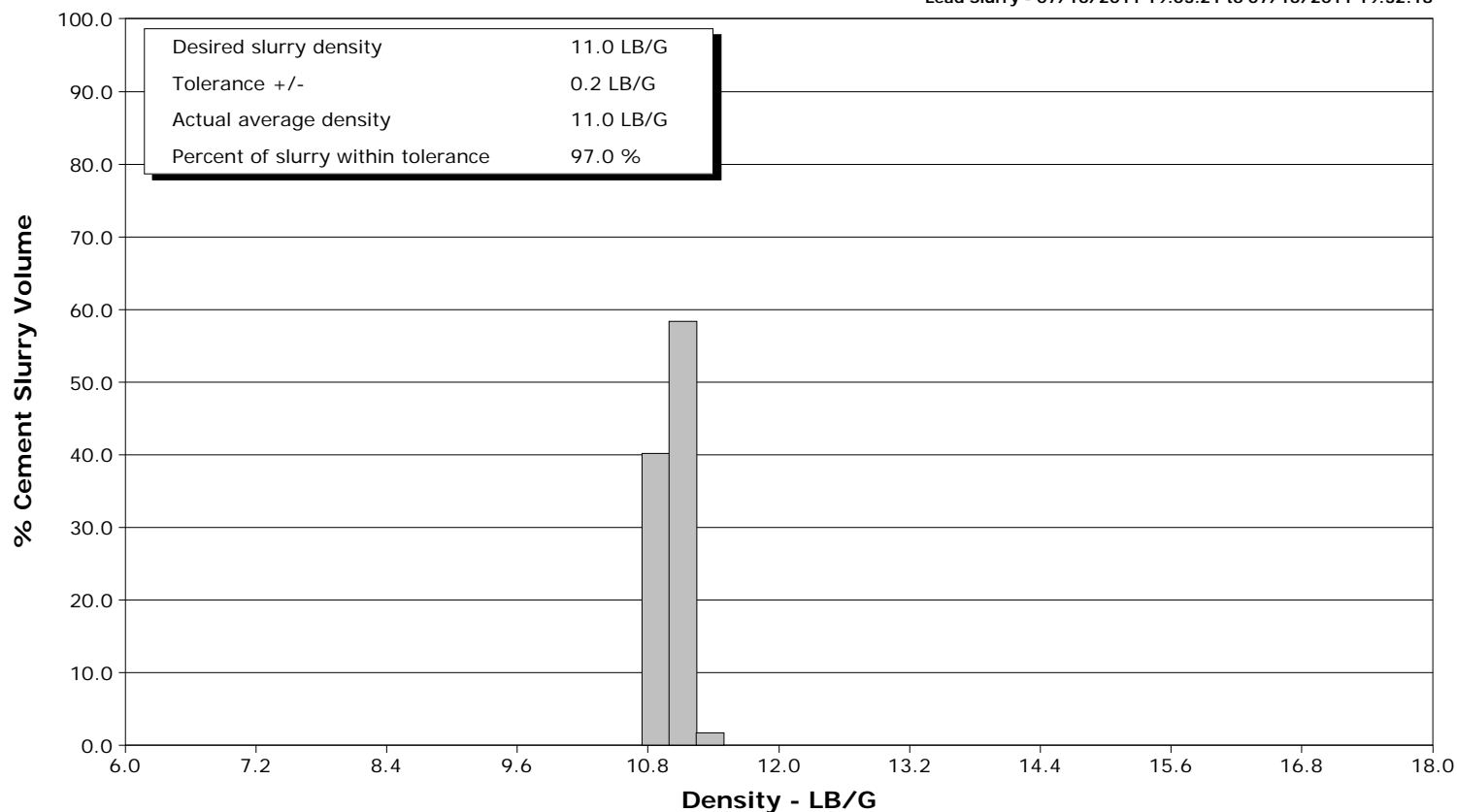
**Client** Encana Oil Gas  
**SIR No.** 601287  
**Job Type** 9 5/8" Surface  
**Job Date** 7-16-2011



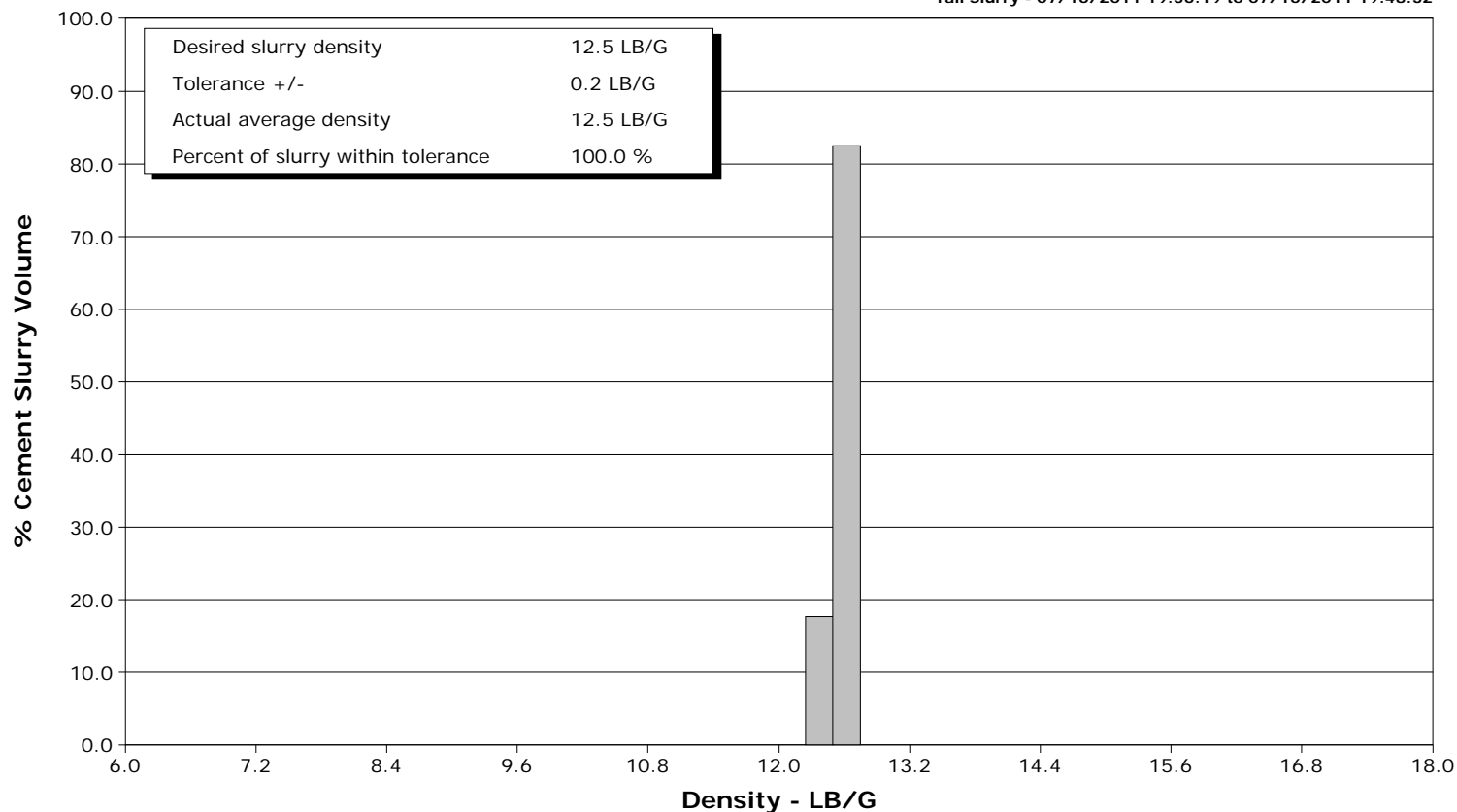
**Well** DW 8603F-33P  
**Field** Grand Vall  
**Engineer** B. Farnham  
**Country** United States

**Client** Encana Oil Gas  
**SIR No.** 601287  
**Job Type** 9 5/8" Surface  
**Job Date** 7-16-2011

Lead Slurry - 07/16/2011 19:03:21 to 07/16/2011 19:32:18



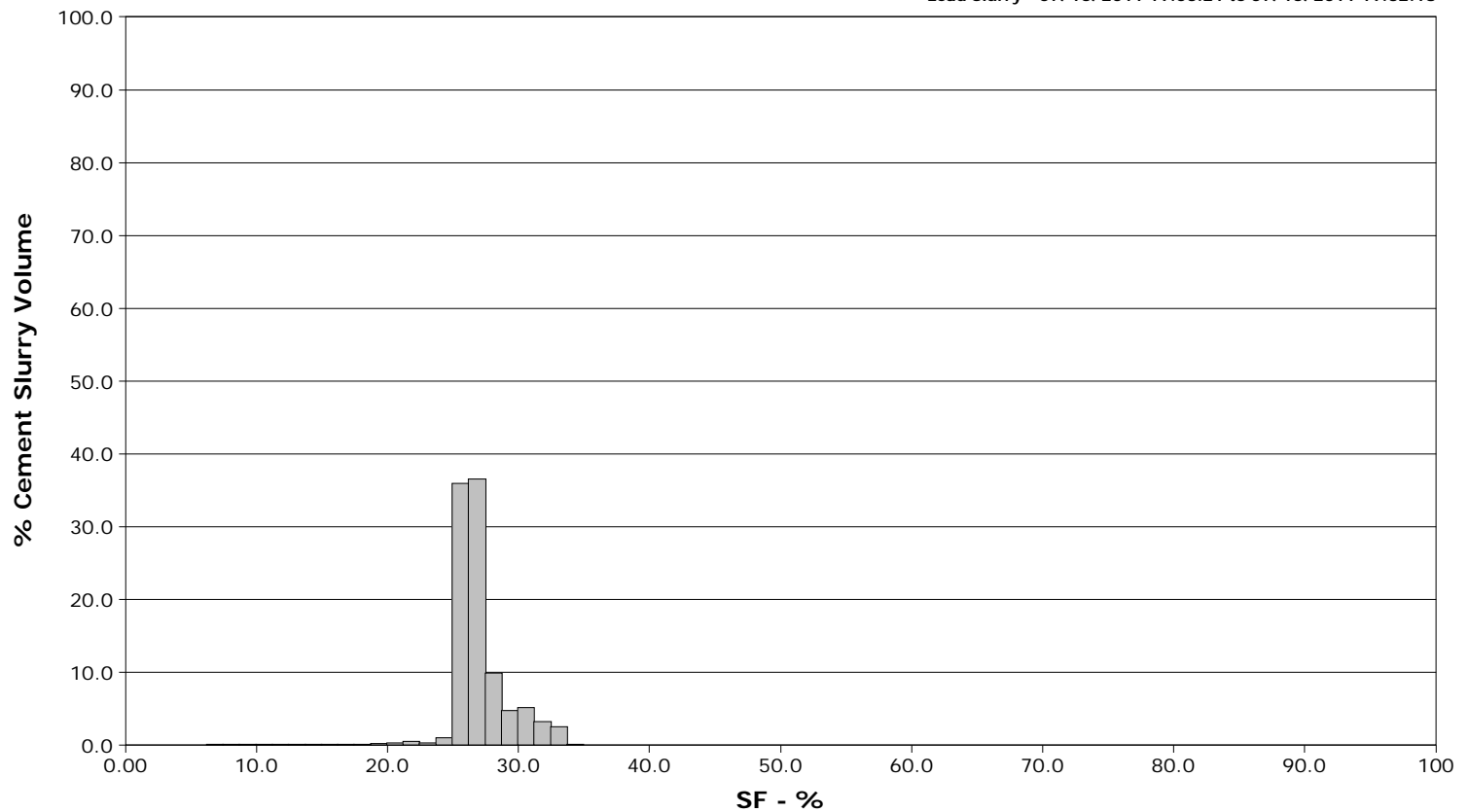
Tail Slurry - 07/16/2011 19:36:19 to 07/16/2011 19:48:32



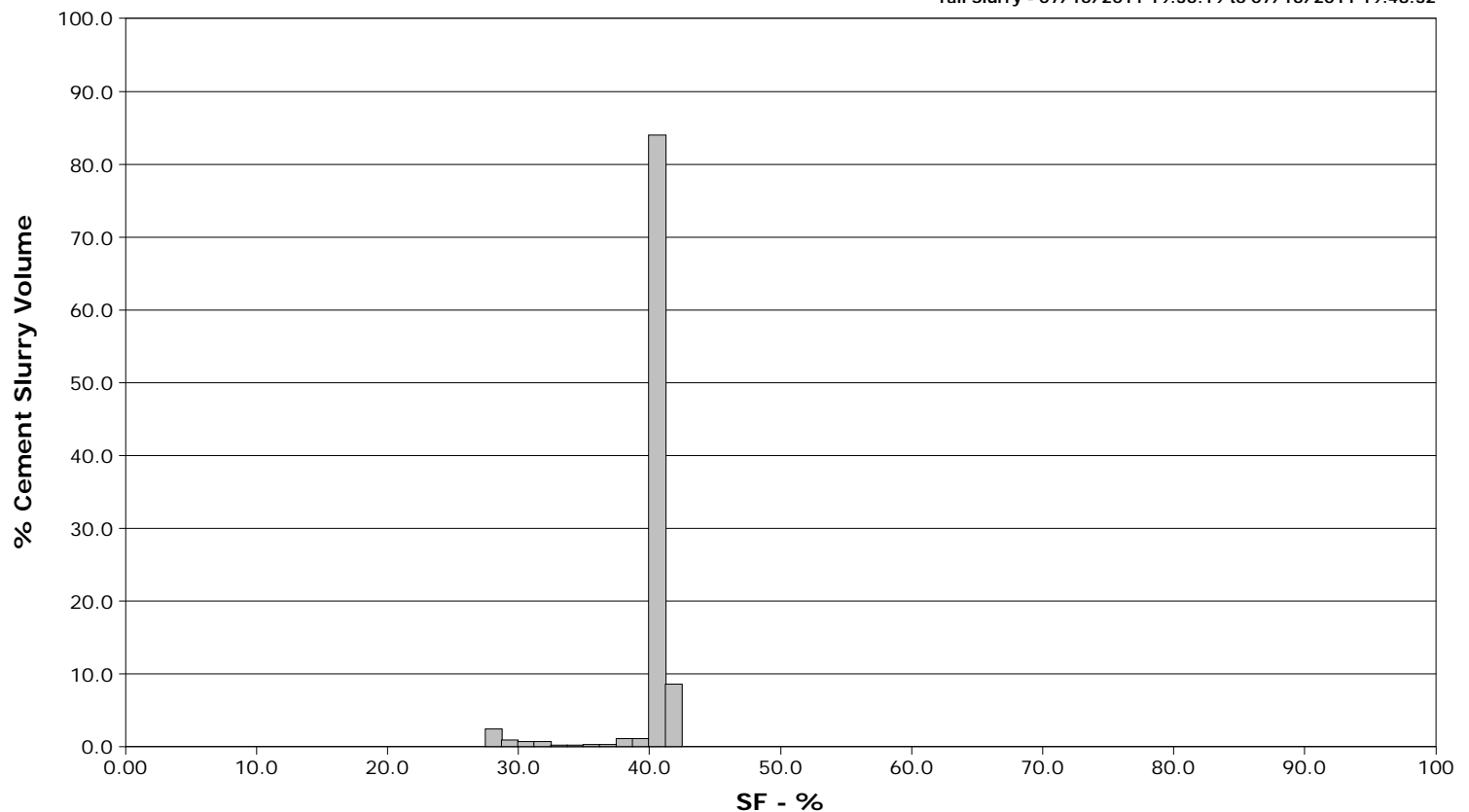
**Well** DW 8603F-33P  
**Field** Grand Vall  
**Engineer** B. Farnham  
**Country** United States

**Client** Encana Oil Gas  
**SIR No.** 601287  
**Job Type** 9 5/8" Surface  
**Job Date** 7-16-2011

Lead Slurry - 07/16/2011 19:03:21 to 07/16/2011 19:32:18



Tail Slurry - 07/16/2011 19:36:19 to 07/16/2011 19:48:32



# Cementing Service Report

				Customer Encana Oil & Gas			Job Number 601287			
Well DW 8603F-33P 8606B			Location (legal) Patterson 308			Schlumberger Location Grand Junction			Job Start Jul/16/2011	
Field Grand Vall		Formation Name/Type shale		Deviation deg		Bit Size 14.8 in		Well MD 2097.0 ft		Well TVD ft
County Garfield		State/Province Colorado		BHP psi		BHST 107 degF		BHCT 91 degF		Pore Press. Gradient lb/gal
Well Master 0631296670		API/UWI								
Rig Name Patterson 308		Drilled For Gas		Service Via Land		Casing/Liner				
						Depth, ft		Size, in		Weight, lb/ft
										Grade
										Thread
Offshore Zone		Well Class New		Well Type Development		120.0		16.0		65.0
						2101.0		9.6		36.0
										j-55
Drilling Fluid Type Bentonite		Max. Density 8.90 lb/gal		Plastic Viscosity 19.000 cP		Tubing/Drill Pipe				
						T/D		Depth, ft		Size, in
										Weight, lb/ft
										Grade
										Thread
Service Line Cementing		Job Type 9 5/8" Surface								
Max. Allowed Tub. Press 3000 psi		Max. Allowed Ann. Press 500 psi		WH Connection Single Cement head		Perforations/Open Hole				
						Top, ft		Bottom, ft		shot/ft
										No. of Shots
										Total Interval ft
										Diameter in
						Treat Down Casing		Displacement 159.0 bbl		Packer Type
										Packer Depth ft
						Tubing Vol. bbl		Casing Vol. 159.0 bbl		Annular Vol. 316.0 bbl
										Openhole Vol. 448.0 bbl
Casing/Tubing Secured <input checked="" type="checkbox"/>		1 Hole Vol. Circulated prior to Cement <input checked="" type="checkbox"/>				Casing Tools		Squeeze Job		
Lift Pressure 1499 psi						Shoe Type Guide		Squeeze Type		
Pipe Rotated <input type="checkbox"/>		Pipe Reciprocated <input type="checkbox"/>				Shoe Depth 2097.0 ft		Tool Type		
No. Centralizers		Top Plugs 1		Bottom Plugs		Stage Tool Type		Tool Depth ft		
Cement Head Type Single						Stage Tool Depth ft		Tail Pipe Size in		
Job Scheduled For Jul/16/2011 15:00		Arrived on Location Jul/16/2011 15:00		Leave Location Jul/16/2011 22:00		Collar Type Float		Tail Pipe Depth ft		
						Collar Depth 2051.0 ft		Sqz. Total Vol. bbl		
Date	Time 24-hr clock	Treating Pressure PSI	Flow Rate B/M	Density LB/G	Volume BBL	Message				
07/16/2011	18:27:47	0	0.4	5.11	0.0	Started Acquisition				
07/16/2011	18:27:56	1	0.4	5.11	0.1	Start Job				
07/16/2011	18:27:57	0	0.4	5.11	0.1	Rig up per Std. 5				
07/16/2011	18:27:58	0	0.4	5.11	0.1	Held Safety Mtg.				
07/16/2011	18:28:17	0	0.4	5.11	0.2					
07/16/2011	18:28:47	1	0.4	5.11	0.4					
07/16/2011	18:29:17	0	0.4	5.11	0.6					
07/16/2011	18:29:47	0	0.4	5.11	0.8					
07/16/2011	18:30:17	1	0.4	5.11	0.9					
07/16/2011	18:30:47	-0	0.4	5.11	1.1					
07/16/2011	18:31:17	0	0.4	5.11	1.3					
07/16/2011	18:31:47	0	0.4	5.12	1.5					
07/16/2011	18:32:17	1	0.4	5.12	1.7					
07/16/2011	18:32:47	0	0.4	5.12	1.9					
07/16/2011	18:33:17	1	0.4	5.12	2.1					
07/16/2011	18:33:47	0	0.4	5.12	2.3					
07/16/2011	18:34:17	1	0.4	5.12	2.5					
07/16/2011	18:34:47	0	0.4	5.12	2.7					
07/16/2011	18:35:17	1	0.4	5.12	2.9					
07/16/2011	18:35:47	0	0.4	5.12	3.1					
07/16/2011	18:36:17	1	0.4	5.12	3.3					

Well			Field		Job Start		Customer		Job Number	
DW 8603F-33P 8606B			Grand Vall		Jul/16/2011		Encana Oil & Gas		601287	
Date	Time 24-hr clock	Treating Pressure PSI	Flow Rate B/M	Density LB/G	Volume BBL	Message				
07/16/2011	18:37:17	1	0.4	5.12	3.7					
07/16/2011	18:37:47	1	0.4	5.12	3.9					
07/16/2011	18:38:17	0	0.4	5.12	4.1					
07/16/2011	18:38:47	-1	0.4	5.12	4.3					
07/16/2011	18:39:17	-2	0.4	5.12	4.5					
07/16/2011	18:39:47	-2	0.4	5.12	4.7					
07/16/2011	18:40:04	-0	0.0	0.01	4.7	Pressure Test Lines				
07/16/2011	18:40:05	-0	0.0	0.01	4.7	500/3500psi Test = Good				
07/16/2011	18:40:17	2	0.0	0.34	4.7					
07/16/2011	18:40:47	54	1.9	8.36	5.5					
07/16/2011	18:41:17	53	1.9	8.38	6.5					
07/16/2011	18:41:47	21	0.0	8.38	6.7					
07/16/2011	18:42:17	19	0.0	8.38	6.7					
07/16/2011	18:42:47	19	0.0	8.38	6.7					
07/16/2011	18:43:17	857	0.0	8.38	6.7					
07/16/2011	18:43:47	809	0.0	8.38	6.7					
07/16/2011	18:44:17	799	0.0	8.38	6.7					
07/16/2011	18:44:47	3471	0.0	8.38	6.7					
07/16/2011	18:45:17	3447	0.0	8.38	6.7					
07/16/2011	18:45:47	3439	0.0	8.38	6.7					
07/16/2011	18:46:17	3434	0.0	8.38	6.7					
07/16/2011	18:46:47	10	0.0	8.38	6.7					
07/16/2011	18:47:15	10	0.0	8.38	6.7	Start Pumping Spacer				
07/16/2011	18:47:17	10	0.0	8.38	6.7	Pump 50bbl 10ppg MUDPUSH				
07/16/2011	18:47:47	10	0.0	8.38	6.7					
07/16/2011	18:48:17	10	0.0	8.38	6.7					
07/16/2011	18:48:47	8	0.0	8.38	6.7					
07/16/2011	18:49:17	7	0.0	8.38	6.7					
07/16/2011	18:49:47	9	0.0	8.38	6.7					
07/16/2011	18:50:17	9	0.0	8.38	6.7					
07/16/2011	18:50:47	35	0.2	10.09	7.1					
07/16/2011	18:51:17	46	1.8	10.00	7.8					
07/16/2011	18:51:47	89	3.5	10.06	9.0					
07/16/2011	18:52:17	70	3.6	10.05	10.8					
07/16/2011	18:52:47	135	5.2	10.01	13.0					
07/16/2011	18:53:17	124	5.1	10.05	15.5					
07/16/2011	18:53:47	116	5.2	10.00	18.1					
07/16/2011	18:53:49	150	5.2	10.00	18.3	Good Returns				
07/16/2011	18:54:17	226	5.9	10.07	21.0					
07/16/2011	18:54:47	191	5.9	10.03	23.9					
07/16/2011	18:55:17	197	5.9	10.08	26.8					
07/16/2011	18:55:47	184	5.9	10.11	29.8					
07/16/2011	18:56:17	176	5.9	10.13	32.7					
07/16/2011	18:56:47	134	5.9	10.14	35.7					
07/16/2011	18:57:17	121	5.9	10.15	38.6					
07/16/2011	18:57:47	119	5.9	10.16	41.5					
07/16/2011	18:58:17	172	5.9	10.17	44.5					
07/16/2011	18:58:47	134	5.9	10.15	47.4					
07/16/2011	18:59:17	149	5.9	10.15	50.3					
07/16/2011	18:59:47	93	5.9	10.16	53.2					
07/16/2011	19:00:17	111	5.9	10.16	56.2					
07/16/2011	19:00:25	126	5.9	10.16	57.0	End Spacer				
07/16/2011	19:00:47	120	5.9	10.16	59.1					
07/16/2011	19:01:07	191	6.0	11.22	61.1	Start Cement Slurry				

Well			Field		Job Start		Customer		Job Number	
DW 8603F-33P 8606B			Grand Vall		Jul/16/2011		Encana Oil & Gas		601287	
Date	Time 24-hr clock	Treating Pressure PSI		Flow Rate B/M	Density LB/G		Volume BBL		Message	
07/16/2011	19:01:47	191		5.5	11.12		65.1			
07/16/2011	19:02:17	201		5.7	11.27		67.9			
07/16/2011	19:02:47	171		5.6	11.13		70.7			
07/16/2011	19:03:17	297		7.7	11.19		74.3			
07/16/2011	19:03:21	295		7.7	11.20		74.8		Start Mixing Lead Slurry	
07/16/2011	19:03:22	279		7.7	11.20		75.0		Wet Dry Samples Taken	
07/16/2011	19:03:23	300		7.7	11.20		75.1		Good Returns	
07/16/2011	19:03:47	280		7.7	11.08		78.2			
07/16/2011	19:04:17	282		7.9	10.96		82.1			
07/16/2011	19:04:47	297		7.9	11.07		86.0			
07/16/2011	19:05:17	292		7.8	11.11		89.9			
07/16/2011	19:05:47	291		7.8	11.14		93.9			
07/16/2011	19:06:17	292		7.8	11.07		97.8			
07/16/2011	19:06:47	270		7.9	11.02		101.7			
07/16/2011	19:07:17	286		7.9	11.02		105.6			
07/16/2011	19:07:47	288		7.9	11.00		109.6			
07/16/2011	19:08:17	283		7.9	11.05		113.6			
07/16/2011	19:08:47	293		7.9	11.03		117.5			
07/16/2011	19:09:17	289		7.9	10.98		121.5			
07/16/2011	19:09:47	278		7.9	10.95		125.4			
07/16/2011	19:10:17	286		7.9	11.00		129.4			
07/16/2011	19:10:47	289		7.9	11.06		133.3			
07/16/2011	19:11:17	282		7.9	11.02		137.3			
07/16/2011	19:11:47	280		7.9	11.00		141.2			
07/16/2011	19:12:17	286		7.9	11.00		145.2			
07/16/2011	19:12:47	286		7.9	10.99		149.1			
07/16/2011	19:13:17	289		7.9	10.98		153.1			
07/16/2011	19:13:47	272		7.9	11.00		157.0			
07/16/2011	19:14:17	280		7.9	11.03		161.0			
07/16/2011	19:14:47	282		7.9	11.04		164.9			
07/16/2011	19:15:17	281		7.9	11.03		168.9			
07/16/2011	19:15:47	280		7.9	10.98		172.8			
07/16/2011	19:16:17	276		7.9	10.97		176.8			
07/16/2011	19:16:47	286		7.9	10.96		180.7			
07/16/2011	19:17:17	311		7.9	11.49		184.7			
07/16/2011	19:17:47	296		7.9	10.97		188.6			
07/16/2011	19:18:17	277		8.0	10.95		192.6			
07/16/2011	19:18:47	276		7.6	11.10		196.6			
07/16/2011	19:19:17	277		7.8	11.04		200.4			
07/16/2011	19:19:47	285		7.9	11.01		204.4			
07/16/2011	19:20:17	291		7.9	11.01		208.3			
07/16/2011	19:20:47	283		7.9	10.98		212.3			
07/16/2011	19:21:17	285		7.9	10.97		216.2			
07/16/2011	19:21:47	279		7.9	10.96		220.2			
07/16/2011	19:22:17	279		7.9	10.96		224.1			
07/16/2011	19:22:47	292		7.9	10.95		228.1			
07/16/2011	19:23:17	273		7.9	10.95		232.0			
07/16/2011	19:23:47	278		7.9	10.98		236.0			
07/16/2011	19:24:17	286		7.9	10.99		239.9			
07/16/2011	19:24:47	280		7.9	11.00		243.9			
07/16/2011	19:25:17	279		7.9	11.00		247.8			
07/16/2011	19:25:47	290		7.9	10.98		251.8			
07/16/2011	19:26:17	286		7.9	10.98		255.8			
07/16/2011	19:26:47	280		7.9	10.97		259.7			

Well DW 8603F-33P 8606B			Field Grand Vall		Job Start Jul/16/2011	Customer Encana Oil & Gas	Job Number 601287
Date	Time 24-hr clock	Treating Pressure PSI	Flow Rate B/M	Density LB/G	Volume BBL	Message	
07/16/2011	19:27:47	288	7.9	11.04	267.6		
07/16/2011	19:28:17	279	7.9	11.04	271.6		
07/16/2011	19:28:47	296	7.9	11.05	275.5		
07/16/2011	19:29:17	295	7.9	11.04	279.5		
07/16/2011	19:29:47	278	7.9	11.01	283.4		
07/16/2011	19:30:17	279	7.9	11.03	287.4		
07/16/2011	19:30:47	269	7.9	11.02	291.3		
07/16/2011	19:31:17	292	7.9	11.05	295.3		
07/16/2011	19:31:47	290	7.9	11.02	299.2		
07/16/2011	19:32:17	292	7.9	11.01	303.2		
07/16/2011	19:32:18	292	7.9	11.01	303.3	End Lead Slurry	
07/16/2011	19:32:47	292	7.9	10.98	307.1		
07/16/2011	19:33:17	335	7.9	11.76	311.1		
07/16/2011	19:33:47	343	7.9	12.12	315.0		
07/16/2011	19:34:17	354	7.8	12.24	318.9		
07/16/2011	19:34:47	238	6.4	12.20	322.3		
07/16/2011	19:35:17	255	6.3	12.30	325.5		
07/16/2011	19:35:47	181	5.0	12.52	328.2		
07/16/2011	19:36:17	166	5.0	12.31	330.7		
07/16/2011	19:36:19	169	5.0	12.35	330.9	Start Mixing Tail Slurry	
07/16/2011	19:36:21	177	5.0	12.35	331.1	Pump 246sk (79bl) 12.5 Tail	
07/16/2011	19:36:22	171	5.0	12.36	331.1	Measured Density = Good	
07/16/2011	19:36:23	171	5.0	12.36	331.2	Good Returns	
07/16/2011	19:36:47	192	5.0	12.53	333.2		
07/16/2011	19:37:17	170	5.0	12.49	335.8		
07/16/2011	19:37:47	181	5.0	12.52	338.3		
07/16/2011	19:38:17	172	5.0	12.49	340.8		
07/16/2011	19:38:47	184	5.0	12.56	343.3		
07/16/2011	19:39:17	171	5.0	12.54	345.8		
07/16/2011	19:39:47	176	5.0	12.53	348.3		
07/16/2011	19:40:17	169	5.0	12.51	350.8		
07/16/2011	19:40:47	178	5.0	12.60	353.3		
07/16/2011	19:41:17	195	5.0	12.63	355.9		
07/16/2011	19:41:47	191	5.0	12.61	358.4		
07/16/2011	19:42:17	182	5.0	12.57	360.9		
07/16/2011	19:42:47	178	5.0	12.54	363.4		
07/16/2011	19:43:17	180	5.0	12.53	365.9		
07/16/2011	19:43:47	184	5.0	12.53	368.4		
07/16/2011	19:44:17	120	4.8	12.53	370.9		
07/16/2011	19:44:47	193	5.0	12.53	373.3		
07/16/2011	19:45:17	179	5.0	12.53	375.8		
07/16/2011	19:45:47	178	5.0	12.52	378.3		
07/16/2011	19:46:17	167	5.0	12.51	380.9		
07/16/2011	19:46:47	187	5.0	12.52	383.4		
07/16/2011	19:47:17	182	5.0	12.52	385.9		
07/16/2011	19:47:47	177	5.0	12.47	388.4		
07/16/2011	19:48:17	188	5.0	12.42	390.9		
07/16/2011	19:48:32	174	5.1	12.43	392.2	End Tail Slurry	
07/16/2011	19:48:34	179	5.0	12.42	392.3	End Cement Slurry	
07/16/2011	19:48:47	177	5.1	12.46	393.4		
07/16/2011	19:49:17	180	5.0	12.45	396.0		
07/16/2011	19:49:47	58	0.0	8.73	398.0		
07/16/2011	19:50:09	55	0.0	13.09	398.0	Drop Top Plug	
07/16/2011	19:50:10	54	0.0	13.09	398.0	Start Displacement	

Well			Field		Job Start	Customer	Job Number
DW 8603F-33P 8606B			Grand Vall		Jul/16/2011	Encana Oil & Gas	601287
Date	Time 24-hr clock	Treating Pressure PSI	Flow Rate B/M	Density LB/G	Volume BBL	Message	
07/16/2011	19:50:47	50	0.2	12.50	398.1		
07/16/2011	19:51:17	48	0.0	12.45	398.1		
07/16/2011	19:51:47	44	0.0	12.45	398.1		
07/16/2011	19:52:17	26	1.2	11.28	398.4		
07/16/2011	19:52:47	18	2.1	8.51	399.4		
07/16/2011	19:53:17	82	5.1	8.97	401.1		
07/16/2011	19:53:47	108	6.4	8.63	403.7		
07/16/2011	19:54:17	140	6.5	8.86	406.9		
07/16/2011	19:54:47	147	6.5	8.47	410.3		
07/16/2011	19:54:49	134	6.5	8.48	410.6	Displace 159bbl H2O	
07/16/2011	19:55:17	117	6.0	8.38	413.4		
07/16/2011	19:55:47	108	5.9	7.85	416.4		
07/16/2011	19:56:17	108	6.0	7.69	419.4		
07/16/2011	19:56:47	128	6.1	8.38	422.4		
07/16/2011	19:57:17	132	6.0	8.32	425.4		
07/16/2011	19:57:47	142	6.0	8.27	428.4		
07/16/2011	19:58:17	149	6.0	8.28	431.4		
07/16/2011	19:58:47	148	6.0	8.35	434.4		
07/16/2011	19:59:17	147	6.0	8.35	437.5		
07/16/2011	19:59:47	169	6.4	8.35	440.5		
07/16/2011	20:00:17	183	6.5	8.36	443.7		
07/16/2011	20:00:47	197	6.4	8.36	446.9		
07/16/2011	20:01:17	205	6.5	8.36	450.1		
07/16/2011	20:01:47	219	6.4	8.36	453.4		
07/16/2011	20:02:17	215	6.4	8.36	456.6		
07/16/2011	20:02:47	246	6.4	8.37	459.8		
07/16/2011	20:03:17	245	6.4	8.37	463.0		
07/16/2011	20:03:47	269	6.4	8.37	466.2		
07/16/2011	20:04:17	245	6.4	8.37	469.4		
07/16/2011	20:04:47	260	6.4	8.37	472.7		
07/16/2011	20:05:17	284	6.4	8.37	475.9		
07/16/2011	20:05:47	274	6.4	8.37	479.1		
07/16/2011	20:06:17	315	6.4	8.37	482.3		
07/16/2011	20:06:47	323	6.4	8.37	485.5		
07/16/2011	20:07:17	334	6.4	8.38	488.7		
07/16/2011	20:07:47	332	6.4	8.37	491.9		
07/16/2011	20:08:17	340	6.4	8.37	495.1		
07/16/2011	20:08:47	340	6.4	8.38	498.3		
07/16/2011	20:09:47	416	6.4	8.38	504.7		
07/16/2011	20:10:13	416	6.4	8.38	507.5	Cement to Surface @ 80bbl away	
07/16/2011	20:10:17	420	6.4	8.38	507.9		
07/16/2011	20:10:47	433	6.4	8.39	511.1		
07/16/2011	20:11:17	401	6.4	8.39	514.3		
07/16/2011	20:11:47	422	6.4	8.39	517.4		
07/16/2011	20:12:17	455	6.4	8.39	520.6		
07/16/2011	20:12:47	422	6.4	8.39	523.8		
07/16/2011	20:13:17	433	6.4	8.39	527.0		
07/16/2011	20:13:47	436	6.4	8.39	530.2		
07/16/2011	20:14:17	496	6.4	8.39	533.4		
07/16/2011	20:14:47	478	6.4	8.39	536.5		
07/16/2011	20:15:17	477	6.4	8.39	539.7		
07/16/2011	20:15:47	528	6.4	8.39	542.9		
07/16/2011	20:16:17	362	6.3	8.39	546.1		
07/16/2011	20:16:47	374	4.0	8.39	548.1		



Well			Field		Job Start	Customer	Job Number
DW 8603F-33P 8606B			Grand Vall		Jul/16/2011	Encana Oil & Gas	601287
Date	Time 24-hr clock	Treating Pressure PSI	Flow Rate B/M	Density LB/G	Volume BBL	Message	
07/16/2011	20:17:47	469	4.3	8.39	552.1		
07/16/2011	20:18:17	385	4.3	8.39	554.2		
07/16/2011	20:18:47	413	3.8	8.39	556.3		
07/16/2011	20:19:17	402	2.0	8.39	557.4		
07/16/2011	20:19:47	377	2.0	8.38	558.4		
07/16/2011	20:20:17	439	2.0	8.39	559.4		
07/16/2011	20:20:47	402	2.0	8.38	560.3		
07/16/2011	20:21:17	742	2.0	8.38	561.3		
07/16/2011	20:21:47	1108	0.0	8.39	561.6		
07/16/2011	20:22:08	1104	0.0	8.39	561.6	Bump Top Plug	
07/16/2011	20:22:09	1105	0.0	8.39	561.6	End Displacement	
07/16/2011	20:22:17	1104	0.0	8.39	561.6		
07/16/2011	20:22:47	1102	0.0	8.39	561.6		
07/16/2011	20:23:17	1102	0.0	8.39	561.6		
07/16/2011	20:23:47	1102	0.0	8.39	561.6		
07/16/2011	20:24:17	1100	0.0	8.39	561.6		
07/16/2011	20:24:47	1102	0.0	8.39	561.6		
07/16/2011	20:25:17	1100	0.0	8.39	561.6		
07/16/2011	20:25:47	1101	0.0	8.39	561.6		
07/16/2011	20:26:17	1102	0.0	8.39	561.6		
07/16/2011	20:26:47	1104	0.0	8.39	561.6		
07/16/2011	20:27:17	1109	0.0	8.39	561.6		
07/16/2011	20:27:47	562	0.0	8.39	561.6		
07/16/2011	20:28:17	8	0.0	8.39	561.6		
07/16/2011	20:28:47	9	0.0	8.39	561.6		
07/16/2011	21:58:54	-1	0.0	8.38	561.6	Pump 8bbbls thru Parasite Line	
07/16/2011	21:58:55	-1	0.0	8.38	561.6	Hit Pressure @ 6bbbls	
07/16/2011	21:59:17	-1	0.0	8.38	0.0		
07/16/2011	21:59:47	-0	0.0	8.38	0.0		
07/16/2011	22:00:17	-4	0.0	8.38	0.0		
07/16/2011	22:00:47	-3	0.0	8.38	0.0		
07/16/2011	22:01:17	-3	0.0	8.38	0.0		
07/16/2011	22:01:47	-3	0.0	8.38	0.0		
07/16/2011	22:02:17	-3	0.0	8.38	0.0		
07/16/2011	22:02:47	-3	0.0	8.38	0.0		
07/16/2011	22:03:17	6	1.9	8.38	0.1		
07/16/2011	22:03:47	7	2.0	8.38	1.2		
07/16/2011	22:04:17	11	2.3	8.38	2.1		
07/16/2011	22:04:47	12	2.4	8.38	3.3		
07/16/2011	22:05:47	405	2.4	8.38	5.6		
07/16/2011	22:06:17	388	2.4	8.38	6.8		
07/16/2011	22:06:47	-7	0.0	8.38	7.8		
07/16/2011	22:07:17	-3	0.0	8.38	7.8		
07/16/2011	22:07:47	-4	0.0	8.38	7.8		
07/16/2011	22:08:17	-3	0.0	8.38	7.8		
07/16/2011	22:08:47	-3	0.0	8.38	7.8		
07/16/2011	22:09:17	-2	0.0	8.38	7.8		

Well DW 8603F-33P 8606B	Field Grand Vall	Job Start Jul/16/2011	Customer Encana Oil & Gas	Job Number 601287
----------------------------	---------------------	--------------------------	------------------------------	----------------------

Post Job Summary

Average Pump Rates, bbl/min					Volume of Fluid Injected, bbl						
Slurry 5.3	N2	Mud 4.6	Maximum Rate 10.9		Total Slurry 7.8	Mud 0.0	Spacer 0.0	N2			
Treating Pressure Summary, psi					Breakdown Fluid						
Maximum 3501	Final 169	Average 197	Bump Plug to 1100	Breakdown	Type FreshWater		Volume 50.0 bbl		Density 8.34 lb/gal		
Avg. N2 Percent %		Designed Slurry Volume 320.0 bbl		Displacement 0.0 bbl		Mix Water Temp 80 degF		Cement Circulated to Surface? <input checked="" type="checkbox"/>		Volume 80.0 bbl	
								Washed Thru Perfs <input type="checkbox"/>		To ft	
Customer or Authorized Representative Ira Cox				Schlumberger Supervisor B. Farnham				Circulation Lost <input type="checkbox"/>		Job Completed <input checked="" type="checkbox"/>	
								-		-	