

NOBLE ENERGY INC.
 LILLI UNIT 14-34
 SESW 34-9N-58W
 600' FSL & 2040' FWL
 Weld County, Colorado
 Wattenberg
CURRENT WELLBORE SCHEMATIC
 with PROPOSED P&A
 9/7/2012

API: 05-123-14033
 COGCC #

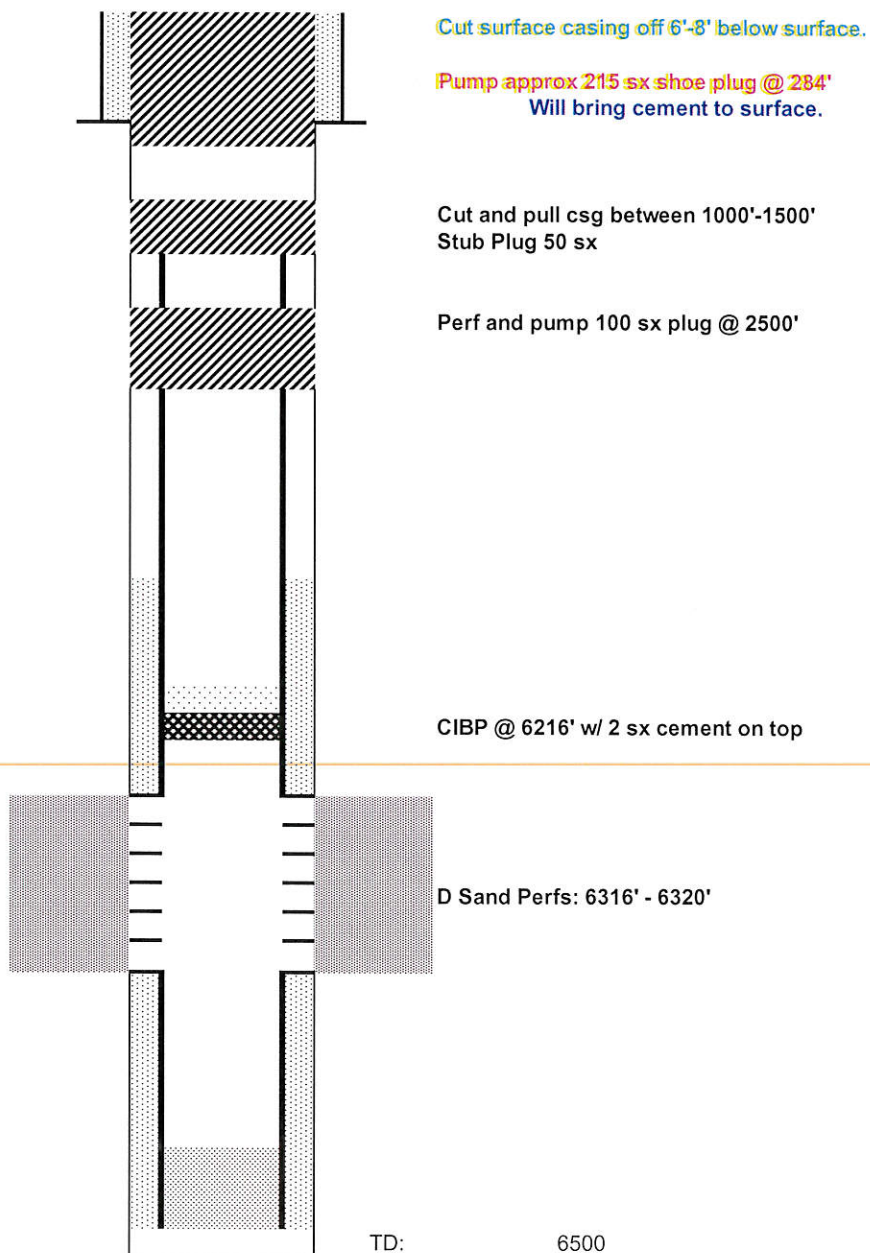
GL Elev: 4762
 KB Elev: 4772

Spud Date: 8/4/1988

Surface Casing :
 8 5/8" 24# @ 184'
 Cement: 120 sx
 TOC: surface

TOC @ 5582'

Production Casing :
 4 1/2" 10.50# @ 6497'
 Cement: 190 sx
 TD: 8/9/1988



Cut surface casing off 6'-8' below surface.

Pump approx 215 sx shoe plug @ 284'
 Will bring cement to surface.

Cut and pull csg between 1000'-1500'
 Stub Plug 50 sx

Perf and pump 100 sx plug @ 2500'

CIBP @ 6216' w/ 2 sx cement on top

D Sand Perfs: 6316' - 6320'

TD: 6500