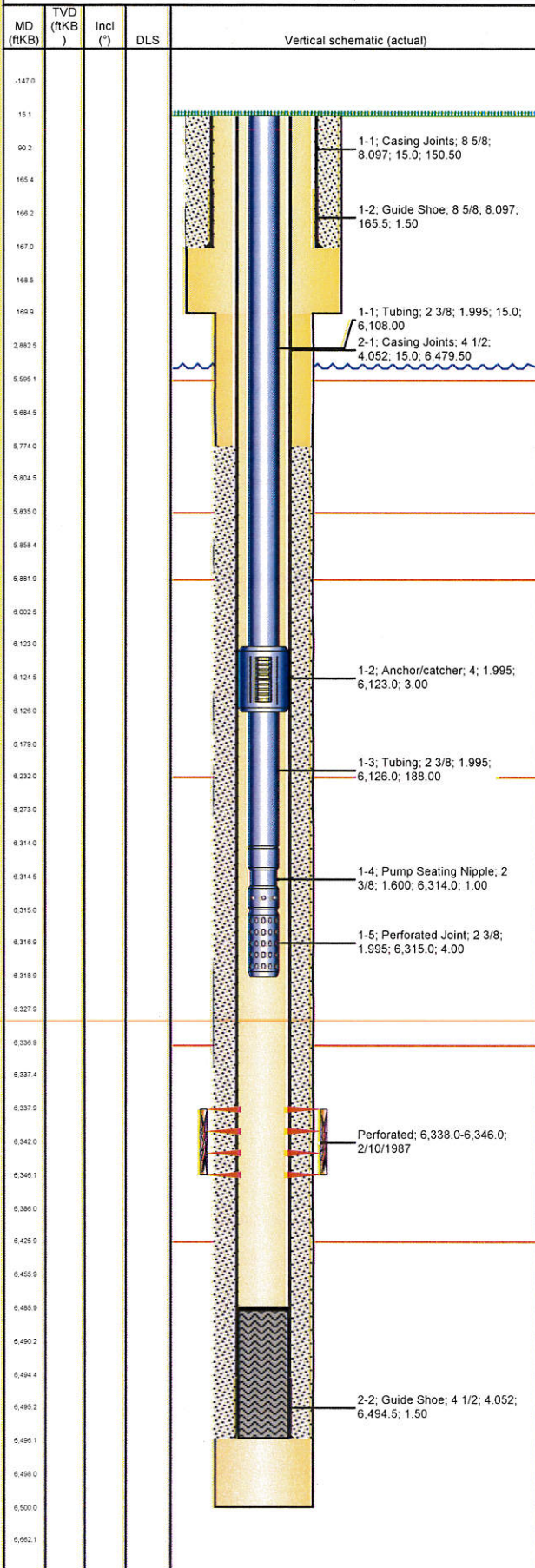


Well Name: LILLI UNIT 14-04

VERTICAL - ORIGINAL HOLE, 9/12/2012 3:28:14 PM



Well Header

API 05-123-13338	Business Unit WATTENBERG	District 25	Well Config VERTICAL
Original KB Elevation (ft) 4,760.00	KB - GL / MSL (ftKB) 15.00	Spud Date 1/31/1987	P & A Date
Comment			

Directions To Well

Surface Location (Congressional)

Quarter 1	Quarter 2	Quarter 3	Quarter 4	Section	Township	Twship...	Range	Rng E/W...
		SE	SW	4	8	N	58	W

Bottom Hole Location

North-South Distance (ft)	From N or S Line	East-West Distance (ft)	From E or W Line

Plug Back Total Depths

Date	Depth (ftKB)	Method	Com
2/5/1987	6,486.0	CASING TALLY	

Wellbore Sections

Section Des	Size (in)	Act Top (ftKB)	Act Btm (ftKB)
SURFACE	12 1/4	15.0	170.0
PRODUCTION	7 7/8	170.0	6,500.0

Zone Statuses

Zone Name	Status Date	Status	Job
D SAND	2/18/1987	PR	DRILLING/COMPLETION - ORIGINAL, 1/31/1987 00:00

Casing Strings

Surface, 167.0ftKB

Casing Description	Run Date	OD (in)	Wt/Len (l...)	Grade	Top (ftKB)	Set Depth...
Surface	2/1/1987	8 5/8	24.00		15.0	167.0

Production, 6,496.0ftKB

Casing Description	Run Date	OD (in)	Wt/Len (l...)	Grade	Top (ftKB)	Set Depth...
Production	2/5/1987	4 1/2	10.50	J-55	15.0	6,496.0

Cement

Description	Top Depth (ftKB)	Bottom Depth (ftKB)
SURFACE CASING CEMENT	15.0	167.0
PRODUCTION CASING CEMENT	5,774.0	6,496.0

Tubing Components

Item Des	OD (in)	Wt (lb/ft)	Grade	Jts	Len (ft)	Btm (ftKB)	Btm (TVD) (ftKB)
Tubing	2 3/8	4.70	J-55	191	6,108.00	6,123.0	
Anchor/catcher	4			1	3.00	6,126.0	
Tubing	2 3/8	4.70	J-55	6	188.00	6,314.0	
Pump Seating Nipple	2 3/8			1	1.00	6,315.0	
Perforated Joint	2 3/8			1	4.00	6,319.0	

Perforation Data

Zone	Bnch/St g	Entered Shot Total	Top (ftKB)	Btm (ftKB)	Date
D SAND, ORIGINAL HOLE		13	6,338.0	6,346.0	2/10/1987

Stimulations & Treatments

Date	Zone	Primary Job Type
2/16/1987	D SAND, ORIGINAL HOLE	DRILLING/COMPLETION - ORIGINAL
Technical Result		
Tech Result Details		
Tech Result Note		
Comment		

Other In Hole

Run Date	Des	OD (in)	Top (ftKB)	Btm (ftKB)

Logs

Date	Type	Top (ftKB)	Btm (ftKB)
2/4/1987	COMPENSATED DENSITY	5,450.0	6,461.0
2/4/1987	INDUCTION	150.0	6,487.0