
WPX ENERGY ROCKY MOUNTAIN LLC-EBUS

**KP 343-21
MAMM CREEK
Garfield County , Colorado**

Cement Surface Casing
08-Mar-2012

Post Job Report

The Road to Excellence Starts with Safety

Sold To #: 300721	Ship To #: 2904876	Quote #:	Sales Order #: 9133476
Customer: WPX ENERGY ROCKY MOUNTAIN LLC-EBUS		Customer Rep: Duniho, Al	
Well Name: KP		Well #: 343-21	API/UWI #: 05-045-20700
Field: MAMM CREEK	City (SAP): SILT	County/Parish: Garfield	State: Colorado
Lat: N 39.506 deg. OR N 39 deg. 30 min. 20.632 secs.		Long: W 107.551 deg. OR W -108 deg. 26 min. 54.712 secs.	
Contractor: NABORS 573		Rig/Platform Name/Num: NABORS 573	
Job Purpose: Cement Surface Casing			
Well Type: Development Well		Job Type: Cement Surface Casing	
Sales Person: MAYO, MARK		Srvc Supervisor: SLAUGHTER, JESSE MBU ID Emp #: 454315	

Job Personnel

HES Emp Name	Exp Hrs	Emp #	HES Emp Name	Exp Hrs	Emp #	HES Emp Name	Exp Hrs	Emp #
BECK, MICHAEL George	11	489151	DOUT, JACOB J	11	430298	SLAUGHTER, JESSE Dean	11	454315
WOLFE, JON P	11	485217						

Equipment

HES Unit #	Distance-1 way	HES Unit #	Distance-1 way	HES Unit #	Distance-1 way	HES Unit #	Distance-1 way
10567589C	60 mile	10722398	60 mile	10867304	60 mile	10998054	60 mile
11139330	60 mile	11583933	60 mile	11808829	60 mile		

Job Hours

Date	On Location Hours	Operating Hours	Date	On Location Hours	Operating Hours	Date	On Location Hours	Operating Hours
03-07-2012	2.5	0	03-08-2012	8.5	4			

TOTAL Total is the sum of each column separately

Job

Job Times

Formation Name	Formation Depth (MD)	Top	Bottom	Called Out	Date	Time	Time Zone
					07 - Mar - 2012	17:00	MST
Form Type				On Location	07 - Mar - 2012	21:30	MST
Job depth MD	1460.5 ft		Job Depth TVD	1460.5 ft	08 - Mar - 2012	05:30	MST
Water Depth			Wk Ht Above Floor	12. ft	08 - Mar - 2012	06:36	MST
Perforation Depth (MD)	<i>From</i>		<i>To</i>		Departed Loc	08 - Mar - 2012	08:30

Well Data

Description	New / Used	Max pressure psig	Size in	ID in	Weight lbm/ft	Thread	Grade	Top MD ft	Bottom MD ft	Top TVD ft	Bottom TVD ft
Sales/Rental/3rd Party (HES)											

Description	Qty	Qty uom	Depth	Supplier
PLUG,CMTG, TOP, 9 5/8, HW, 8.16 MIN/9.06 MA	1	EA		

Tools and Accessories

Type	Size	Qty	Make	Depth	Type	Size	Qty	Make	Depth	Type	Size	Qty	Make
Guide Shoe					Packer					Top Plug	9.625	1	HES
Float Shoe					Bridge Plug					Bottom Plug			
Float Collar					Retainer					SSR plug set			
Insert Float										Plug Container	9.625	1	HES
Stage Tool										Centralizers			

Miscellaneous Materials

Gelling Agt	Conc	Surfactant	Conc	Acid Type	Qty	Conc %
Treatment Fld	Conc	Inhibitor	Conc	Sand Type	Size	Qty

Fluid Data

Stage/Plug #: 1

Fluid #	Stage Type	Fluid Name	Qty	Qty uom	Mixing Density lbm/gal	Yield ft ³ /sk	Mix Fluid Gal/sk	Rate bbl/min	Total Mix Fluid Gal/sk

Stage/Plug #: 1									
Fluid #	Stage Type	Fluid Name	Qty	Qty uom	Mixing Density lbm/gal	Yield ft ³ /sk	Mix Fluid Gal/sk	Rate bbl/min	Total Mix Fluid Gal/sk
1	Water Spacer	FRESH WATER	20.00	bbl	8.34	.0	.0	4	
2	Lead Cement	VERSACEM (TM) SYSTEM (452010)	230.0	sacks	12.3	2.38	13.75	8	13.75
	13.75 Gal	FRESH WATER							
3	Tail Cement	VERSACEM (TM) SYSTEM (452010)	160.0	sacks	12.8	2.11	11.75	6	11.75
	11.75 Gal	FRESH WATER							
4	Displacement Fluid	FRESH WATER	111.4	bbl	8.34	.0	.0	10	
Calculated Values		Pressures		Volumes					
Displacement	111.4	Shut In: Instant		Lost Returns	NO	Cement Slurry	158	Pad	
Top Of Cement	SURFACE	5 Min		Cement Returns	30	Actual Displacement	111.4	Treatment	
Frac Gradient		15 Min		Spacers	20	Load and Breakdown		Total Job	289
Rates									
Circulating		Mixing	8	Displacement	10	Avg. Job	9		
Cement Left In Pipe	Amount	0 ft	Reason	Shoe Joint					
Frac Ring # 1 @	ID	Frac ring # 2 @	ID	Frac Ring # 3 @	ID	Frac Ring # 4 @	ID		
The Information Stated Herein Is Correct				Customer Representative Signature					

The Road to Excellence Starts with Safety

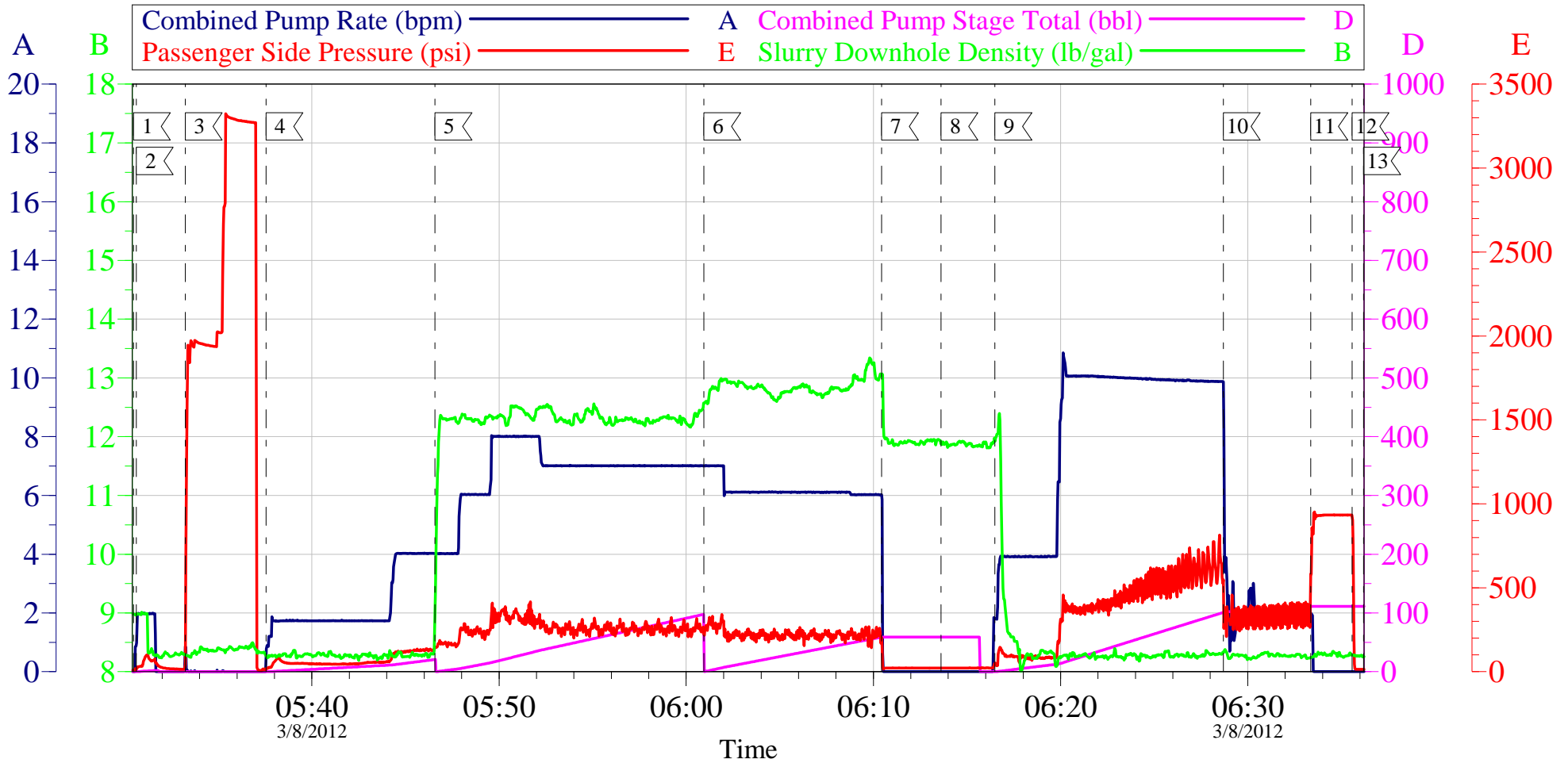
Sold To #: 300721	Ship To #: 2904876	Quote #:	Sales Order #: 9133476
Customer: WPX ENERGY ROCKY MOUNTAIN LLC-EBUS		Customer Rep: Duniho, Al	
Well Name: KP		Well #: 343-21	API/UWI #: 05-045-20700
Field: MAMM CREEK	City (SAP): SILT	County/Parish: Garfield	State: Colorado
Legal Description:			
Lat: N 39.506 deg. OR N 39 deg. 30 min. 20.632 secs.		Long: W 107.551 deg. OR W -108 deg. 26 min. 54.712 secs.	
Contractor: NABORS 573		Rig/Platform Name/Num: NABORS 573	
Job Purpose: Cement Surface Casing			Ticket Amount:
Well Type: Development Well		Job Type: Cement Surface Casing	
Sales Person: MAYO, MARK		Srvc Supervisor: SLAUGHTER, JESSE	MBU ID Emp #: 454315

Activity Description	Date/Time	Cht #	Rate bbl/min	Volume bbl		Pressure psig		Comments
				Stage	Total	Tubing	Casing	
Call Out	03/07/2012 17:00							TD 1475 FT, TP 1460.5 FT, SHOE 44.41 FT, CSG 9 5/8 IN 32.3 LB/FT, HOLE 13 1/2 IN, MUD WT 10.1 PPG
Pre-Convoy Safety Meeting	03/07/2012 19:30							WITH ALL HES EMPLOYEES
Arrive At Loc	03/07/2012 21:30							RIG WAS RUNNING CASIN UPON HES ARRIVAL
Assessment Of Location Safety Meeting	03/08/2012 04:20							
Rig-Up Equipment	03/08/2012 04:30							
Pre-Job Safety Meeting	03/08/2012 05:20							WITH ALL HES EMPLOYEES, AND RIG CREW
Start Job	03/08/2012 05:30							
Pump Water	03/08/2012 05:30		2	2			78.0	FRESH WATER
Pressure Test	03/08/2012 05:33							TESTED LINES TO 3277 PSI PRESSURE HOLDING
Pump Spacer 1	03/08/2012 05:37		4	20			143.0	FRESH WATER
Pump Lead Cement	03/08/2012 05:46		8	97.5			270.0	230 SKS AT 12.3 PPG, 2.38 FT3/SK, 13.75 GAL/SK
Pump Tail Cement	03/08/2012 06:00		6	60.1			220.0	160 SKS AT 12.8 PPG, 2.11 FT3/SK, 11.75 GAL/SK
Shutdown	03/08/2012 06:10							
Drop Plug	03/08/2012 06:13							PLUG LAUNCHED

Activity Description	Date/Time	Cht #	Rate bbl/min	Volume bbl		Pressure psig		Comments
				Stage	Total	Tubing	Casing	
Pump Displacement	03/08/2012 06:16		10	101.4			620.0	FRESH WATER
Slow Rate	03/08/2012 06:28		2	10			340.0	
Bump Plug	03/08/2012 06:33		2		111.4		870.0	PLUG BUMPED
Check Floats	03/08/2012 06:35							FLOATS HOLDING. HES RETURNED 1 BBL H2O TO PUMP
End Job	03/08/2012 06:36							PIPE WAS STATIC DURING JOB, GOOD CIRCULATION THROUGHOUT JOB. HES RETURNED 30 BBL CEMENT TO SURFACE
Post-Job Safety Meeting (Pre Rig-Down)	03/08/2012 06:40							WITH ALL HES EMPLOYEES
Rig-Down Equipment	03/08/2012 06:45							
Pre-Convoy Safety Meeting	03/08/2012 08:20							WITH ALL HES EMPLOYEES
Crew Leave Location	03/08/2012 08:30							
Comment	03/08/2012 08:31							THANK YOUFOR USING HALLIBURTON CEMENT DEPARTMENT, JESSE SLAUGHTER AND CREW

WILLIAMS KP 343-21

9 5/8 SURFACE

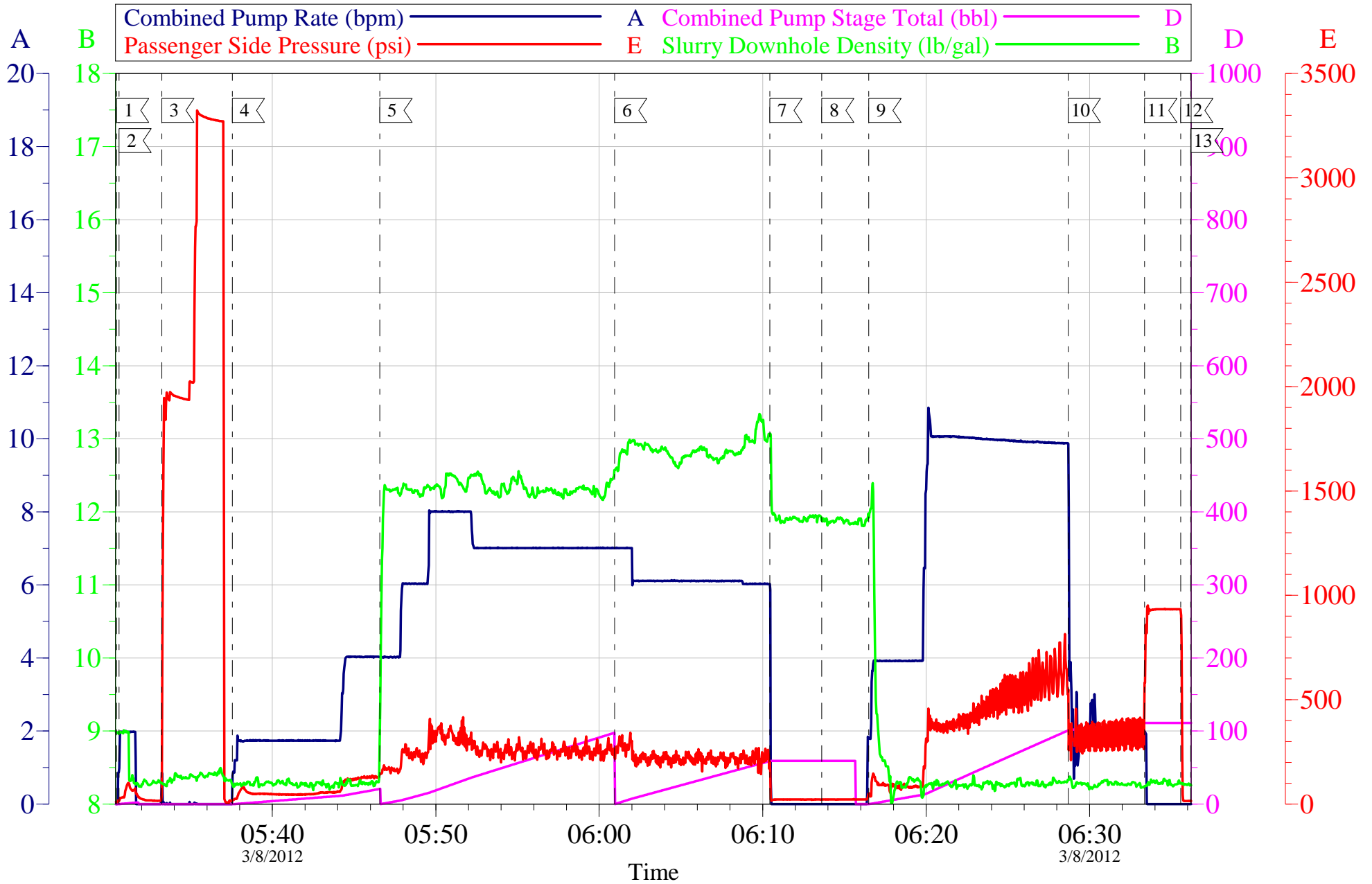


Local Event Log			
1 <	START JOB	05:30:28	2 <
			PRIME LINES
		05:30:37	3 <
			TEST LINES
		05:33:14	
4 <	PUMP H2O SPACER	05:37:33	5 <
			PUMP LEAD CEMENT
		05:46:35	6 <
			PUMP TAIL CEMENT
		06:00:56	
7 <	SHUTDOWN	06:10:26	8 <
			DROP TOP PLUG
		06:13:37	9 <
			PUMP DISPLACEMENT
		06:16:29	
10 <	SLOW RATE	06:28:42	11 <
			BUMP PLUG
		06:33:22	12 <
			CHECK FLOATS
		06:35:35	
13 <	END JOB	06:36:12	

Customer: WILLIAMS	Job Date: 08-Mar-2012	Sales Order #: 9133476
Well Description: KP 343-21	Job Type: SURFACE	ADC Used: YES
Company Rep: AL DUNIHO	Cement Supervisor: JESSE SLAUGHTER	Elite #3: JACOB DOUT

WILLIAMS KP 343-21

9 5/8 SURFACE



Customer: WILLIAMS	Job Date: 08-Mar-2012	Sales Order #: 9133476
Well Description: KP 343-21	Job Type: SURFACE	ADC Used: YES
Company Rep: AL DUNIHO	Cement Supervisor: JESSE SLAUGHTER	Elite #3: JACOB DOUT

OptiCem v6.4.10
08-Mar-12 07:33

Sales Order #: 9133476	Line Item: 10	Survey Conducted Date: 3/8/2012
Customer: WPX ENERGY ROCKY MOUNTAIN LLC-EBUS		Job Type (BOM): CMT SURFACE CASING BOM
Customer Representative: AL DUNIHO		API / UWI: (leave blank if unknown) 05-045-20700
Well Name: KP		Well Number: 343-21
Well Type: Development Well	Well Country: United States of America	
H2S Present:	Well State: Colorado	Well County: Garfield

Dear Customer,

We hope that you were satisfied with the service quality of this job performed by Halliburton. It is the aim of our management and service personnel to deliver equipment and service of a standard unmatched in the service sector of the energy industry.

Please take the time to let us know if our performance met with your satisfaction. Please be as critical as possible to ensure we constantly improve our service. Your comments are of great value to us and are intended for the exclusive use of Halliburton.

CUSTOMER SATISFACTION SURVEY

CATEGORY	CUSTOMER SATISFACTION RESPONSE	
Survey Conducted Date	The date the survey was conducted	3/8/2012
Survey Interviewer	The survey interviewer is the person who initiated the survey.	JESSE SLAUGHTER (HB21762)
Customer Participation	Did the customer participate in this survey? (Y/N)	Yes
Customer Representative	Enter the Customer representative name	AL DUNIHO
HSE	Was our HSE performance satisfactory? Circle Y or N	Yes
Equipment	Were you satisfied with our Equipment? Circle Y or N	Yes
Personnel	Were you satisfied with our people? Circle Y or N	Yes
Customer Comment	Customer's Comment	GOOD JOB MEN

CUSTOMER SIGNATURE

Sales Order #: 9133476	Line Item: 10	Survey Conducted Date: 3/8/2012
Customer: WPX ENERGY ROCKY MOUNTAIN LLC-EBUS		Job Type (BOM): CMT SURFACE CASING BOM
Customer Representative: AL DUNIHO		API / UWI: (leave blank if unknown) 05-045-20700
Well Name: KP		Well Number: 343-21
Well Type: Development Well	Well Country: United States of America	
H2S Present:	Well State: Colorado	Well County: Garfield

KEY PERFORMANCE INDICATORS

General	
Survey Conducted Date	3/8/2012
The date the survey was conducted	

Cementing KPI Survey	
Type of Job	0
Select the type of job. (Cementing or Non-Cementing)	
Select the Maximum Deviation range for this Job	Vertical
What is the highest deviation for the job you just completed? This may not be the maximum well deviation.	
Total Operating Time (hours)	4
Total Operating Hours Including Rig-up, Pumping, Rig-down. Enter in decimal format.	
HSE Incident, Accident, Injury	No
HSE Incident, Accident, Injury. This should be recordable incidents only.	
Was the job purpose achieved?	Yes
Was the job delivered correctly as per customer agreed design?	
Operating Hours (Pumping Hours)	1.5
Total number of hours pumping fluid on this job. Enter in decimal format.	
Customer Non-Productive Rig Time (hrs)	0
Lost time due to Halliburton in the start, execution, or completion of an ordered service or product, or delays in a follow-on service. Enter in decimal format. 0 if none.	
Type of Rig Classification Job Was Performed	Drilling Rig (Portable)
Type Of Rig (classification) Job Was Performed On	
Number Of JSAs Performed	6
Number Of Jsas Performed	
Number of Unplanned Shutdowns	0
Unplanned shutdown is when injection stops for any period of time.	
Was this a Primary Cement Job (Yes / No)	Yes

Sales Order #: 9133476	Line Item: 10	Survey Conducted Date: 3/8/2012
Customer: WPX ENERGY ROCKY MOUNTAIN LLC-EBUS		Job Type (BOM): CMT SURFACE CASING BOM
Customer Representative: AL DUNIHO		API / UWI: (leave blank if unknown) 05-045-20700
Well Name: KP		Well Number: 343-21
Well Type: Development Well	Well Country: United States of America	
H2S Present:	Well State: Colorado	Well County: Garfield

Primary Cement Job= Casing job, Liner job, or Tie-back job.	
Did We Run Wiper Plugs? Did We Run Top And Bottom Casing Wiper Plugs?	Top
Mixing Density of Job Stayed in Designed Density Range (0-100%) Density Range defined as +/- .20 ppg. Calculation: Total BBLs cement mixed at designed density divided by total BBLs of cement multiplied by 100	95
Was Automated Density Control Used? Was Automated Density Control (ADC) Used ?	Yes
Pump Rate (percent) of Job Stayed At Designed Pump Rate Pump Rate range defined as +/- 1bbl/min. Calculation: Total BBLs of fluid pumped at the designed rate divided by Total BBLs of fluid pumped, multiplied by 100	95
Nbr of Remedial Sqz Jobs Rqd - Competition Number Of Remedial Squeeze Jobs Required After Primary Job Performed By Competition	0
Nbr of Remedial Plug Jobs Rqd - HES Number Of Remedial Plug Jobs Needed After Primary Plug Pumped By HES	0
Nbr of Remedial Sqz Jobs Rqd - HES Number Of Remedial Squeeze Jobs Required After Primary Job Performed By HES	0