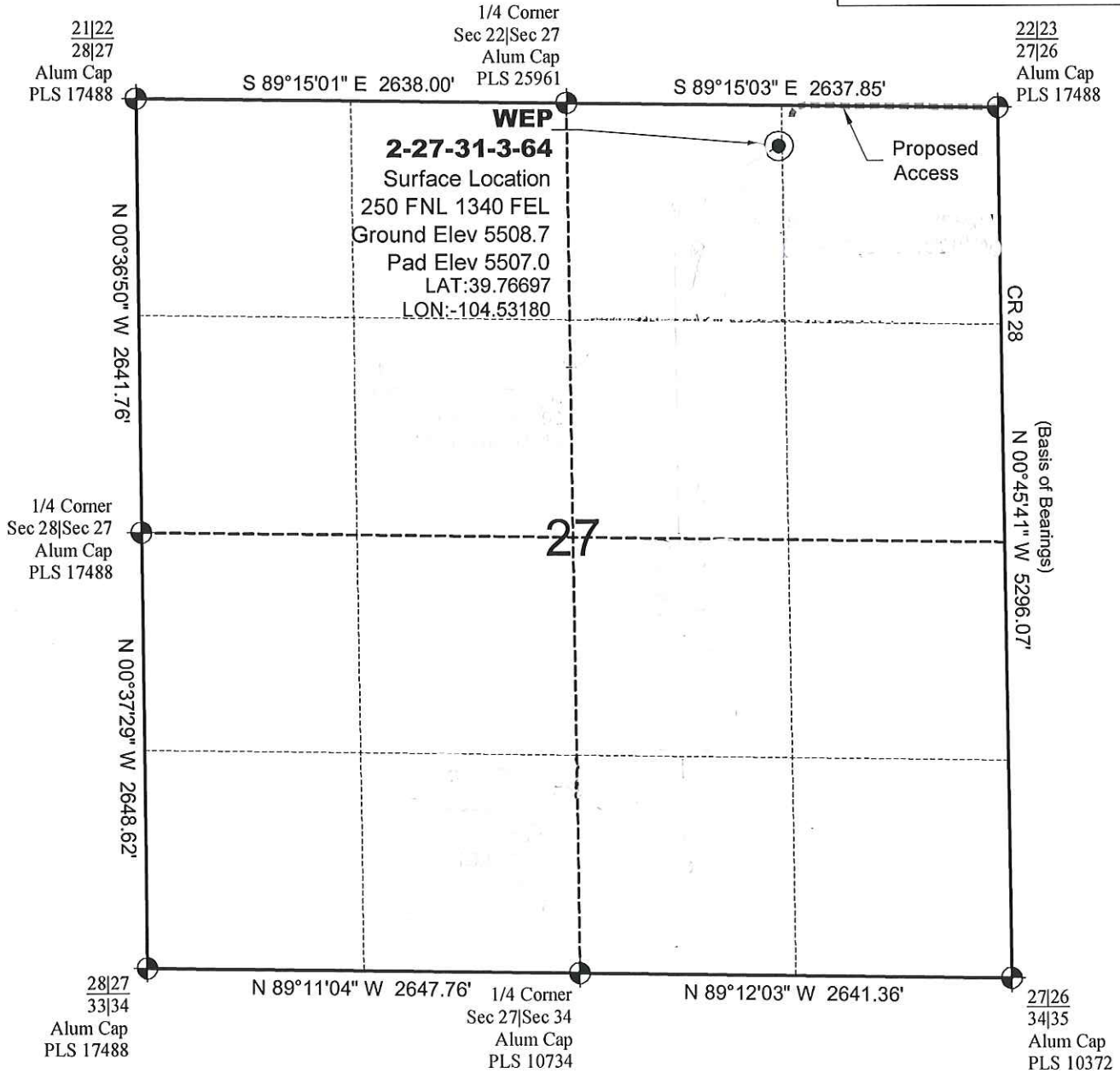


# WELL LOCATION MAP

WEP  
27-31-3-64 PAD

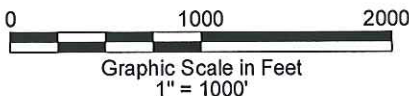


## SURVEYOR'S STATEMENT

The undersigned hereby states that the well location shown hereon was staked on the ground based on existing monumentation and/or physical evidence found in the field and is correct to the best of my knowledge, information and belief.



North



## NOTES

- 1.) Horizontal (NAD 83) and vertical (NAVD 88) datum is based on the Leica Geosystems SmartNet of Colorado.
  - 2.) All directions, distances, and dimensions shown hereon are based on coordinates from the "Colorado coordinate system of 1983 central zone" (article 52 of title 38, C.R.S.).
  - 3.) All section line dimensions shown hereon are based on field measurements of existing monuments and/or physical evidence found in the field unless otherwise indicated. Refer to land survey plats deposited in Weld County.
  - 4.) Physical features shown hereon are for graphical representation only.
  - 5.) See Form 2A for visible improvements within 400' of wellhead.
  - 6.) Distances to nearest section lines are measured perpendicularly.
  - 7.) This is not a land survey nor land survey plat.
  - 8.) Date of Survey 5/11/12; Date of Drawing 5/18/12. REV 0
- PDOP Reading: 2.7 Instrument Operator: Marc Woodard



CARRIZO OIL & GAS, INC  
WEP 2-27-31-3-64

SL NW1/4 NE1/4 SEC.27 T3S R64W  
HL TD SW1/4 SE1/4 SEC.27 T3S R64W  
6th PM ADAMS COUNTY COLORADO