



September 7, 2012

Department of Natural Resources
Oil and Gas Conservation Commission
The Chancery Building
1120 Lincoln St., Suite 801
Denver, CO 80203

Re: **30 Day Certification Letter - 318A-e**
REIGLE 28N-4HZ
Township 2 North, Range 65 West, Section 4: SW/4SE/4
Unit Spacing: 02N-65W-04 W/2E/2 E/2W/2
Weld County, Colorado

Ladies/Gentlemen:

Kerr-McGee Oil and Gas Onshore LP ("KMG") hereby certifies to the Director that a thirty (30) day notice has been given by certified mail to all owners in the proposed wellbore spacing unit. We have not received any objections to such well location, proposed spacing unit, or additional producing formation. KMG hereby requests the Director to approve the boundary well.

If you have any questions or issues regarding this permit, please contact Cheryl Light at (720) 929-6461.

Very truly yours,

Kerr-McGee Oil and Gas Onshore LP

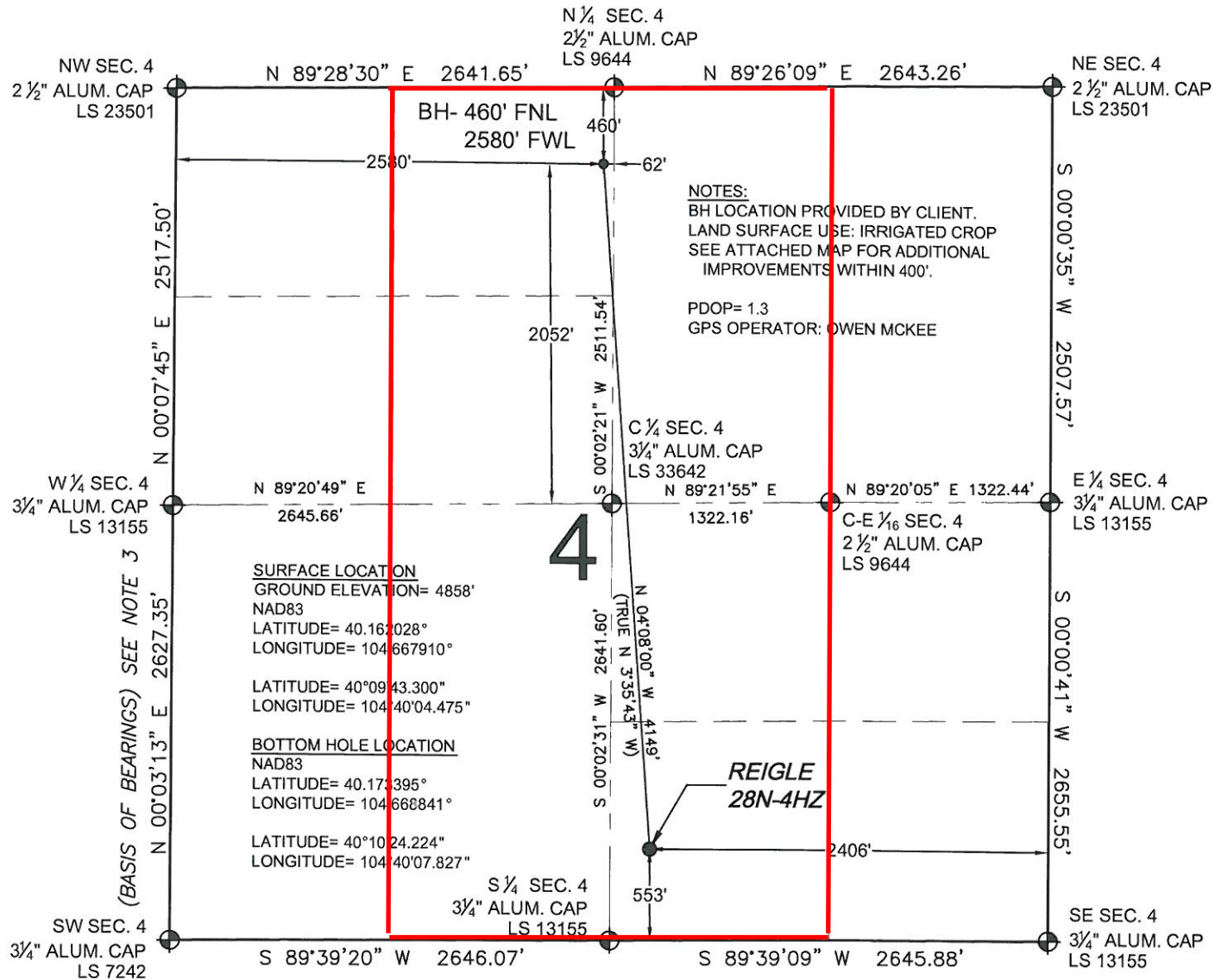
A handwritten signature in black ink, appearing to read 'Lauren Christiansen', written over the printed name.

Lauren Christiansen
Regulatory Analyst I

Enclosure

WELL LOCATION CERTIFICATE: REIGLE 28N-4HZ

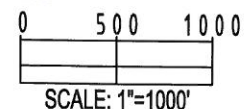
SECTION 4, TOWNSHIP 2 NORTH, RANGE 65 WEST, 6TH P.M.



WELL REIGLE 28N-4HZ TO BE LOCATED 553' FSL AND 2406' FEL

LEGEND

- ⊕ = EXISTING MONUMENT ⊕ = BOTTOM HOLE BH = BOTTOM HOLE
 ● = PROPOSED WELL ⊕ = EXISTING WELL



NOTES:

- THIS FIELD SURVEY CONFORMS TO THE MINIMUM STANDARDS SET BY THE C.O.G.C.C., RULE NO. 215
- HORIZONTAL POSITIONS AND ORTHOMETRIC ELEVATIONS SHOWN AT THE WELL HEAD, ARE BASED ON GPS-RTK POSITIONS DERIVED FROM MINIMUM 2-HOUR STATIC OBSERVATIONS CORRECTED BY THE NATIONAL GEODETIC SURVEY ONLINE POSITIONING USER SERVICE, O.P.U.S. DATUM: HORIZONTAL = NAD83/2007, VERTICAL = NAVD88
- THE BASIS OF BEARINGS ARE STATE PLANE COORDINATE SYSTEM GRID BEARINGS SHOWN HEREON BETWEEN THE DESCRIBED MONUMENTS SHOWN HEREON.
- GRID DISTANCES ARE SHOWN, AS MEASURED IN THE FIELD, WITH TIES TO WELLS MEASURED PERPENDICULAR TO SECTION LINES.

I, MARK A. HALL, A LICENSED PROFESSIONAL LAND SURVEYOR IN THE STATE OF COLORADO DO HEREBY CERTIFY TO **KERR-MCGEE OIL & GAS ONSHORE LP**, THAT THE SURVEY AND WELL LOCATION CERTIFICATE SHOWN HEREON WERE DONE BY ME OR UNDER MY DIRECT SUPERVISION AND THAT THE DRAWING SHOWN HEREON ACCURATELY DEPICTS THE PROPOSED LOCATION OF THE WELL. THIS CERTIFICATE DOES NOT REPRESENT A LAND SURVEY PLAT OR IMPROVEMENT SURVEY PLAT AS DEFINED BY C.R.S. 38-51-102 AND CANNOT BE RELIED UPON TO DETERMINE OWNERSHIP.

MARK A. HALL, PLS 36073
COLORADO LICENSED PROFESSIONAL LAND SURVEYOR
FOR AND ON BEHALF OF P.F.S., LLC

NOTICE: ACCORDING TO COLORADO LAW YOU MUST COMMENCE ANY LEGAL ACTION BASED UPON ANY DEFECT IN THIS SURVEY WITHIN THREE YEARS AFTER YOU FIRST DISCOVER SUCH DEFECT. IN NO EVENT MAY ANY ACTION BASED UPON ANY DEFECT IN THIS SURVEY BE COMMENCED MORE THAN TEN YEARS FROM THIS SAID DATE OF THIS CERTIFICATION SHOWN HEREON.



PREPARED BY: FIELD DATE: 07-24-12
 DRAWING DATE: 07-30-12
 BY: MCH CHECKED: TJN
 SURFACE LOCATION: SW 1/4 SE1/4, SEC. 4, T2N, R65W, 6TH P.M.
 WELD COUNTY, COLORADO

