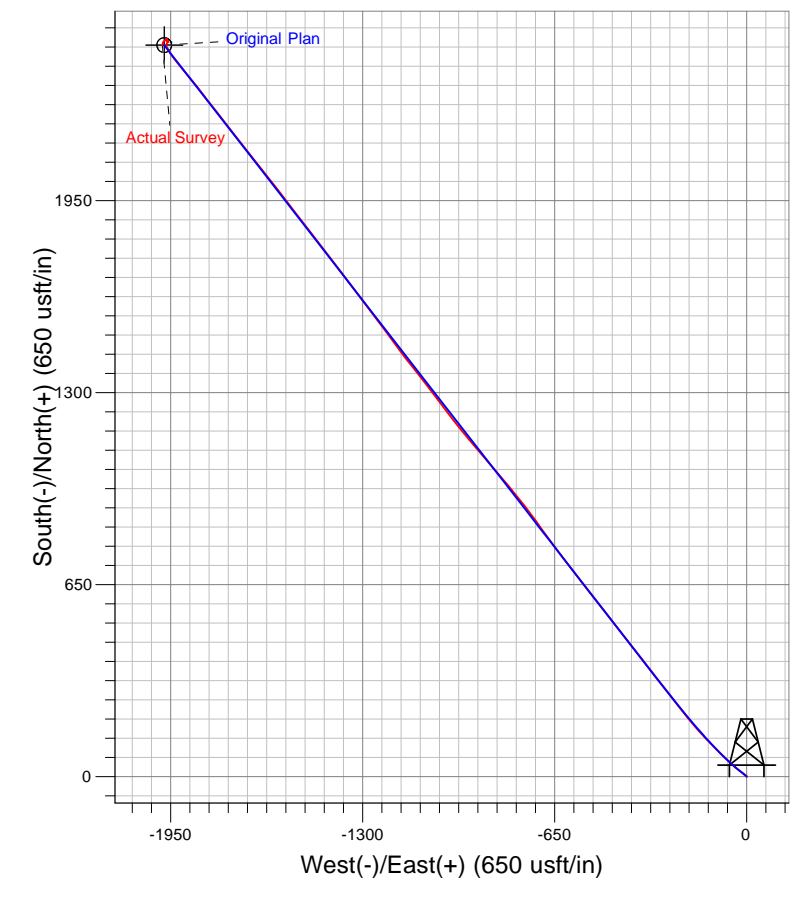
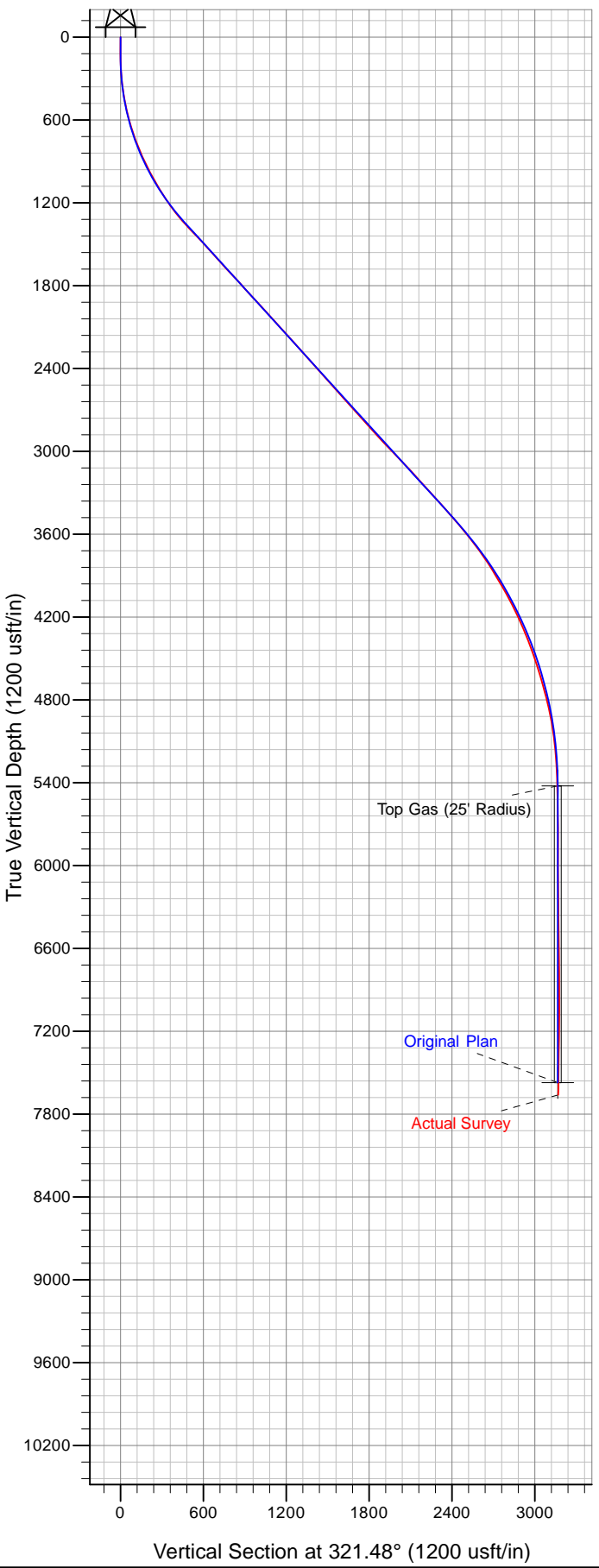




Well Name: PA 12-29
 Surface Location: DOE 3-W-29 Pad
 North American Datum 1983 , US State Plane 1983. Colorado Central Zone
 Ground Elevation: 5676.00
 WELL @ 5702.00usft (Nabors 577 (26') kjs)

+N/-S	+E/-W	Northing	Easting	Latitude	Longitude	Slot
0.00	0.00	1613230.43	2287969.31	39.48995	-108.02325	B9



Azimuths to True North
 Magnetic North: 10.25°

Magnetic Field
 Strength: 52159.4snT
 Dip Angle: 65.71°
 Date: 4/22/2012
 Model: IGRF2010