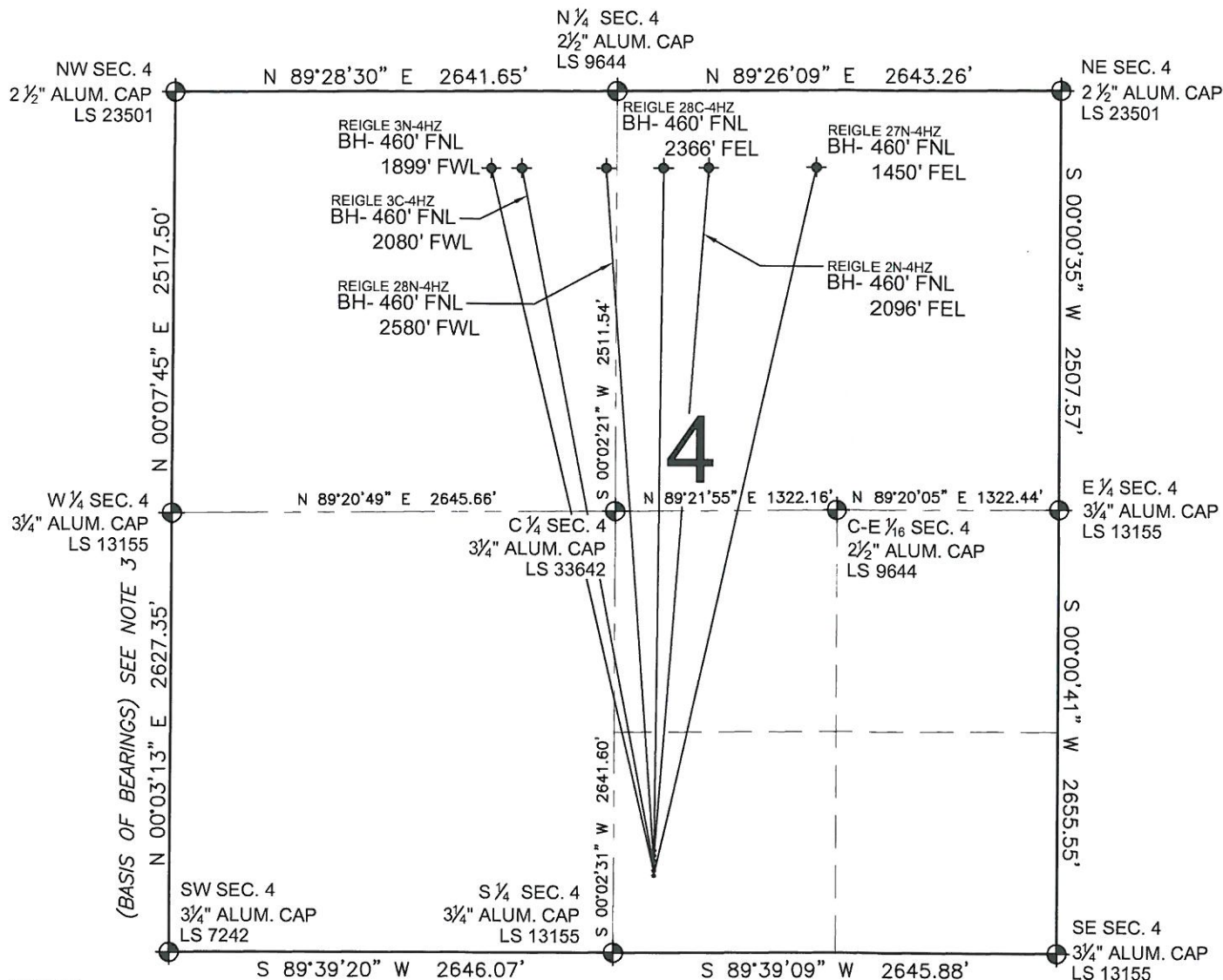


PAD DRAWING: REIGLE 6 PAD

SECTION 4, TOWNSHIP 2 NORTH, RANGE 65 WEST, 6TH P.M.



LEGEND

- = EXISTING MONUMENT
 = PROPOSED WELL
 = BOTTOM HOLE
 BH= BOTTOM HOLE
 = EXISTING WELL

NOTES:

- THIS FIELD SURVEY CONFORMS TO THE MINIMUM STANDARDS SET BY THE C.O.G.C.C., RULE NO. 215
- HORIZONTAL POSITIONS AND ORTHOMETRIC ELEVATIONS SHOWN AT THE WELL HEAD, ARE BASED ON GPS-RTK POSITIONS DERIVED FROM MINIMUM 2-HOUR STATIC OBSERVATIONS CORRECTED BY THE NATIONAL GEODETIC SURVEY ONLINE POSITIONING USER SERVICE, O.P.U.S. DATUM: HORIZONTAL = NAD83/2007, VERTICAL = NAVD88
- THE BASIS OF BEARINGS ARE STATE PLANE COORDINATE SYSTEM GRID BEARINGS SHOWN HEREON BETWEEN THE DESCRIBED MONUMENTS SHOWN HEREON.
- GRID DISTANCES ARE SHOWN, AS MEASURED IN THE FIELD, WITH TIES TO WELLS MEASURED PERPENDICULAR TO SECTION LINES.

NOTES:

- REIGLE 28C-4HZ TO BE AT 613' FSL, 2405' FEL.
 BOTTOM HOLE AT 460' FNL & 2366' FEL.
 REIGLE 2N-4HZ TO BE AT 583' FSL, 2406' FEL.
 BOTTOM HOLE AT 460' FNL & 2096' FEL.
 REIGLE 28N-4HZ TO BE AT 553' FSL, 2406' FEL.
 BOTTOM HOLE AT 460' FNL & 2580' FWL.
 REIGLE 3C-4HZ TO BE AT 523' FSL, 2406' FEL.
 BOTTOM HOLE AT 460' FNL & 2080' FWL.
 REIGLE 3N-4HZ TO BE AT 493' FSL, 2406' FEL.
 BOTTOM HOLE AT 460' FNL & 1899' FWL.
 REIGLE 27N-4HZ TO BE AT 463' FSL, 2406' FEL.
 BOTTOM HOLE AT 460' FNL & 1450' FEL.

PREPARED BY:

PFS

Petroleum Field Services, LLC
1801 W. 13th Ave.
Denver, CO 80204



KERR-MCGEE OIL & GAS ONSHORE LP

FIELD DATE:
07-24-12

DRAWING DATE:
07-30-12

BY:
MCH

REV:
TJN

PAD NAME:
REIGLE 6 PAD

SURFACE LOCATION:

WELD COUNTY, COLORADO

SW 1/4 SE 1/4, SEC. 4, T2N, R65W, 6TH P.M.



0 500 1000

SCALE: 1"=1000'