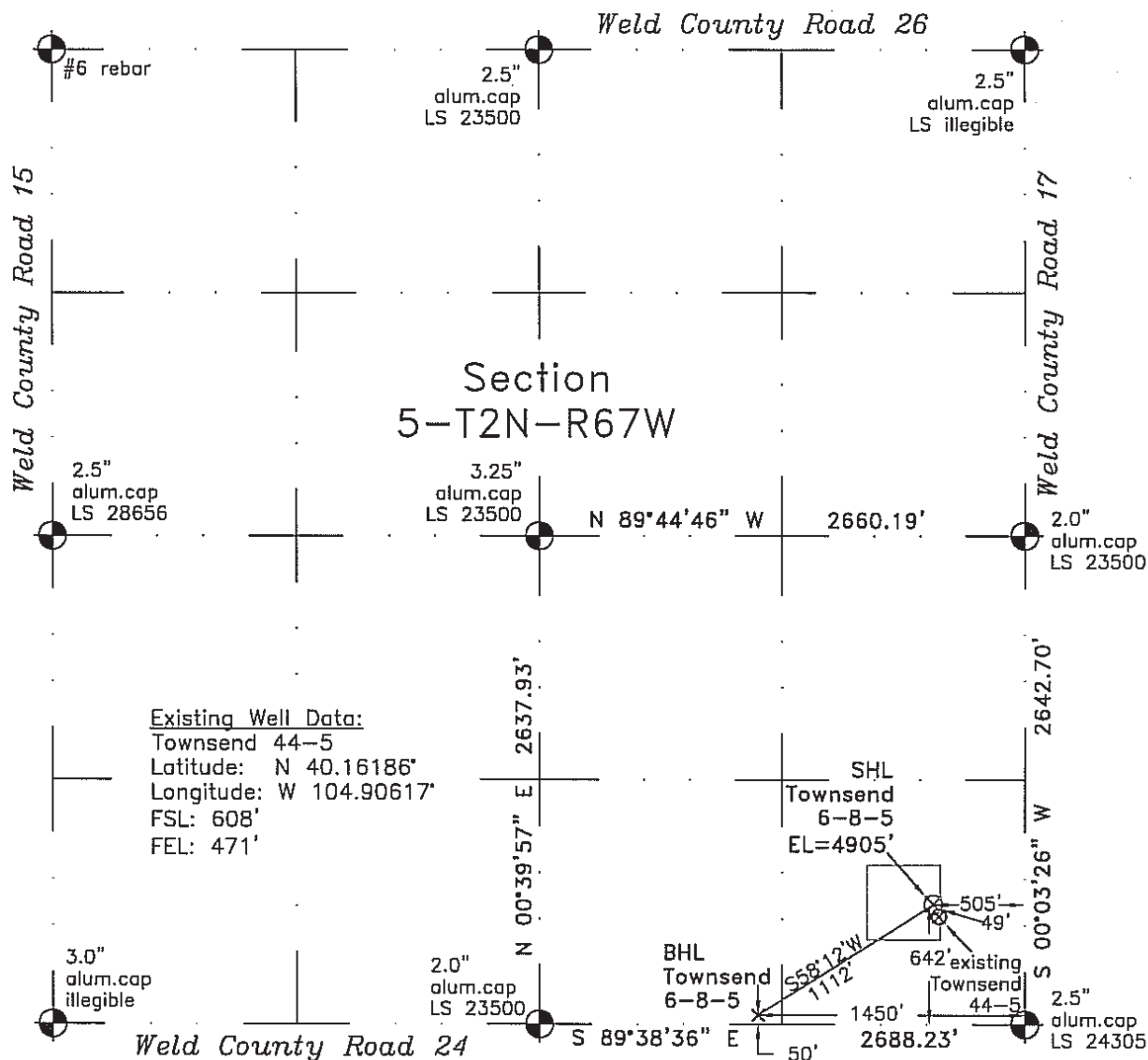


WELL LOCATION CERTIFICATE

THIS MAP DOES NOT REPRESENT A BOUNDARY SURVEY



Existing Well Data:
 Townsend 44-5
 Latitude: N 40.16186°
 Longitude: W 104.90617°
 FSL: 608'
 FEL: 471'

SHL
 Townsend
 6-8-5
 EL=4905'

BHL
 Townsend
 6-8-5

642' existing
 Townsend
 44-5

LEGEND
 — found survey monument
 (c) — calculated dimension

In accordance with a request from Doug Pearlman of EnCana Oil & Gas (USA) Inc., Frederick Land Surveying, Inc. has determined the location of the **Townsend 6-8-5** well site to be SHL: 642' FSL & 505' FEL, (BHL: 50' FSL & 1450' FEL) as measured at ninety (90) degrees from the section lines of Section 5, Township 2 North, Range 67 West of the 6th Principal Meridian, Weld County, Colorado.

Proposed Surface Hole Data:

Latitude: N 40.16195° (BHL 40.16036°)
 Longitude: W 104.90628° (BHL 104.90968°)
 Nearest: Building 515' southeast Above Ground Utility 459' east
 Public Road 483' east Railroad 6300' northwest
 Property Line: 161' west
 PDOP: 1.8

Notes:

- 1) Bearings and distances based on NAD 83 Colorado North State Plane Coordinates using RTK GPS observations taken 12/15/09 by operator Tom Winans.
- 2) Conversion factor to ground (1.000271870).
- 3) Elevations based on NGVD 88 GPS heights and Geoid 2003 corrections.
- 4) See improvement map for visible improvements within 400 feet.
- 5) The location falls on agricultural land.

I hereby certify that this Well Location Certificate was prepared by me or under my direct supervision on 12/16/09 for and on behalf of EnCana Oil & Gas (USA) Inc. and that it is a true and correct copy of the original survey plat and that it is not to be relied upon for establishment of fences, buildings, or other future improvement lines.

Alex Ronald Perkins
 Alex Ronald Perkins LS#34176
 Job #: 06016.004 12-17-09

NOTICE: According to Colorado law you MUST commence any legal action based upon any defect in this W.L.C. within three years after you first discover such defect. In no event may any action based upon any defect in this W.L.C. be commenced more than ten years from this said date of the certification shown hereon.