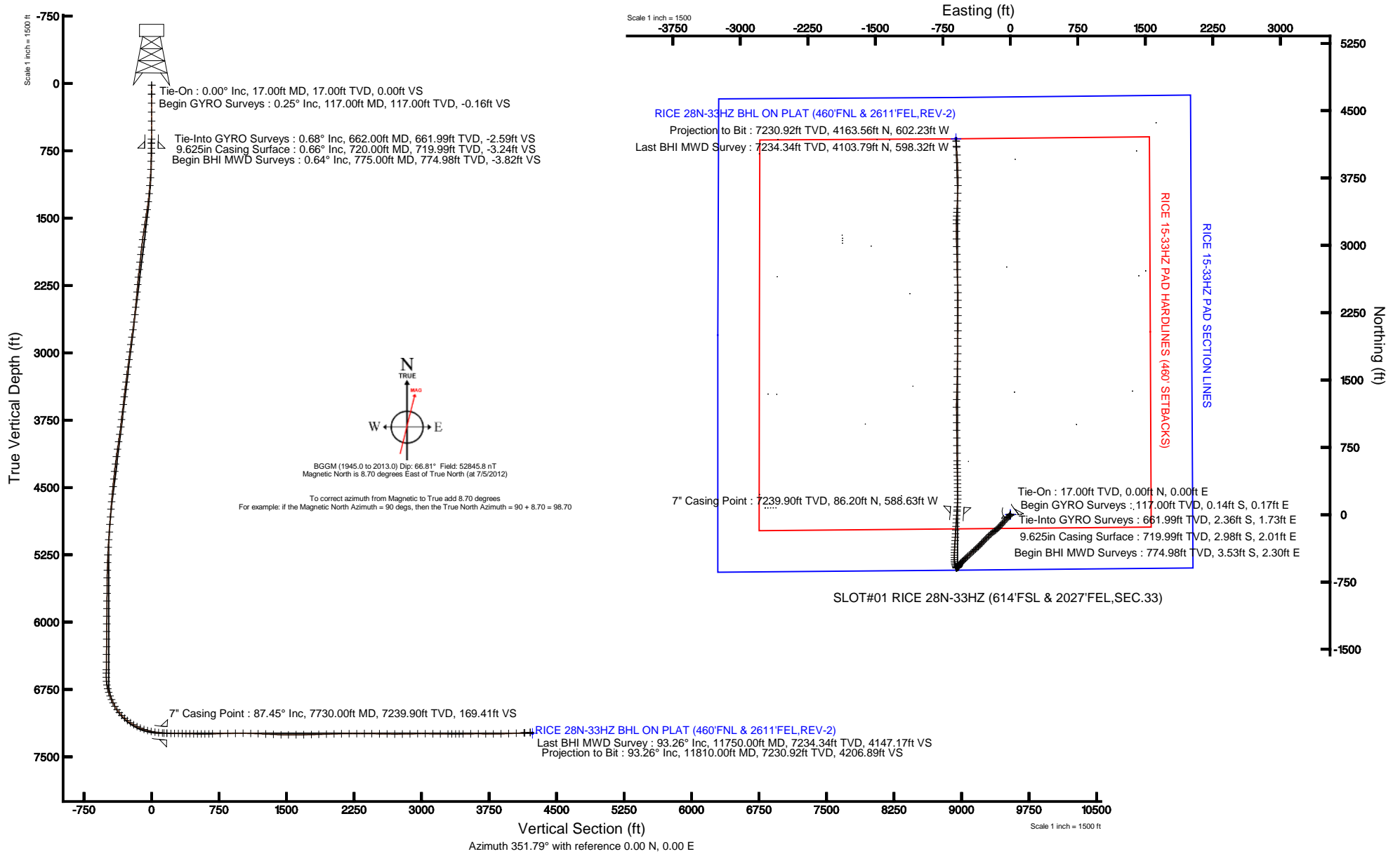


KERR-MCGEE OIL & GAS ONSHORE LP

Location: COLORADO Slot: SLOT#01 RICE 28N-33HZ (614'FSL & 2027'FEL,SEC.33)
 Field: WELD COUNTY (KERR MCGEE) Well: RICE 28N-33HZ
 Facility: SEC.33-T3N-R66W Wellbore: RICE 28N-33HZ PWB

Plot reference wellpath is RICE 28N-33HZ (REV-D.0) PWP

True vertical depths are referenced to XTREME 8 (RKB)	Grid System: NAD83 / Lambert Colorado SP, Northern Zone (501), US feet
Measured depths are referenced to XTREME 8 (RKB)	North Reference: True north
XTREME 8 (RKB) to Mean Sea Level: 4958 feet	Scale: True distance
Mean Sea Level to Mud line (At Slot: SLOT#01 RICE 28N-33HZ (614'FSL & 2027'FEL,SEC.33)): 0 feet	Depths are in feet
Coordinates are in feet referenced to Slot	Created by: wilsjef02 on 8/6/2012





Actual Wellpath Report

RICE 28N-33HZ AWP

Page 1 of 7



REFERENCE WELLPATH IDENTIFICATION

Operator	KERR-MCGEE OIL & GAS ONSHORE LP	Slot	SLOT#01 RICE 28N-33HZ (614'FSL & 2027'FEL,SEC.33)
Area	COLORADO	Well	RICE 28N-33HZ
Field	WELD COUNTY (KERR MCGEE)	Wellbore	RICE 28N-33HZ AWB
Facility	SEC.33-T3N-R66W		

REPORT SETUP INFORMATION

Projection System	NAD83 / Lambert Colorado SP, Northern Zone (501), US feet	Software System	WellArchitect® 3.0.2
North Reference	True	User	Wilsjef02
Scale	0.999958	Report Generated	8/6/2012 at 14:01:41
Convergence at slot	0.47° East	Database/Source file	WellArchitectDB/RICE_28N-33HZ_AWB.xml

WELLPATH LOCATION

	Local coordinates		Grid coordinates		Geographic coordinates	
	North[ft]	East[ft]	Easting[US ft]	Northing[US ft]	Latitude	Longitude
Slot Location	0.00	0.00	3201189.88	1307759.68	40°10'33.434"N	104°46'47.975"W
Facility Reference Pt			3201189.88	1307759.68	40°10'33.434"N	104°46'47.975"W
Field Reference Pt			3197771.84	1268891.29	40°04'09.600"N	104°47'36.000"W

WELLPATH DATUM

Calculation method	Minimum curvature	XTREME 8 (RKB) to Facility Vertical Datum	4958.00ft
Horizontal Reference Pt	Slot	XTREME 8 (RKB) to Mean Sea Level	4958.00ft
Vertical Reference Pt	XTREME 8 (RKB)	XTREME 8 (RKB) to Mud Line at Slot (SLOT#01 RICE 28N-33HZ (614'FSL & 2027'FEL,SEC.33))	4958.00ft
MD Reference Pt	XTREME 8 (RKB)	Section Origin	N 0.00, E 0.00 ft
Field Vertical Reference	Mean Sea Level	Section Azimuth	351.77°



Actual Wellpath Report

RICE 28N-33HZ AWP

Page 2 of 7



REFERENCE WELLPATH IDENTIFICATION			
Operator	KERR-MCGEE OIL & GAS ONSHORE LP	Slot	SLOT#01 RICE 28N-33HZ (614'FSL & 2027'FEL,SEC.33)
Area	COLORADO	Well	RICE 28N-33HZ
Field	WELD COUNTY (KERR MCGEE)	Wellbore	RICE 28N-33HZ AWB
Facility	SEC.33-T3N-R66W		

WELLPATH DATA (162 stations) † = interpolated/extrapolated station										
MD [ft]	Inclination [°]	Azimuth [°]	TVD [ft]	Vert Sect [ft]	North [ft]	East [ft]	Latitude	Longitude	DLS [°/100ft]	Comments
0.00†	0.000	129.120	0.00	0.00	0.00	0.00	40°10'33.434"N	104°46'47.975"W	0.00	
17.00	0.000	129.120	17.00	0.00	0.00	0.00	40°10'33.434"N	104°46'47.975"W	0.00	Tie-On
117.00	0.250	129.120	117.00	-0.16	-0.14	0.17	40°10'33.433"N	104°46'47.973"W	0.25	Begin GYRO Surveys
217.00	0.360	110.760	217.00	-0.47	-0.39	0.63	40°10'33.430"N	104°46'47.967"W	0.15	
317.00	0.330	126.730	317.00	-0.83	-0.67	1.16	40°10'33.427"N	104°46'47.960"W	0.10	
417.00	0.220	201.880	417.00	-1.20	-1.02	1.32	40°10'33.424"N	104°46'47.958"W	0.35	
517.00	0.210	150.400	516.99	-1.54	-1.36	1.34	40°10'33.421"N	104°46'47.958"W	0.19	
617.00	0.500	162.240	616.99	-2.14	-1.93	1.56	40°10'33.415"N	104°46'47.955"W	0.30	
662.00	0.680	156.320	661.99	-2.59	-2.36	1.73	40°10'33.411"N	104°46'47.953"W	0.42	Tie-Into GYRO Surveys
775.00	0.640	151.240	774.98	-3.82	-3.53	2.30	40°10'33.399"N	104°46'47.945"W	0.06	Begin BHI MWD Surveys
866.00	2.250	223.080	865.96	-5.42	-5.28	1.32	40°10'33.382"N	104°46'47.958"W	2.35	
956.00	5.350	228.750	955.75	-8.81	-9.34	-3.04	40°10'33.342"N	104°46'48.014"W	3.47	
1048.00	6.490	225.290	1047.26	-14.24	-15.83	-9.96	40°10'33.278"N	104°46'48.103"W	1.30	
1138.00	8.550	227.950	1136.48	-20.99	-23.89	-18.54	40°10'33.198"N	104°46'48.214"W	2.32	
1229.00	9.680	225.900	1226.33	-29.23	-33.74	-29.06	40°10'33.101"N	104°46'48.349"W	1.29	
1320.00	11.500	223.800	1315.77	-39.30	-45.61	-40.83	40°10'32.983"N	104°46'48.501"W	2.04	
1411.00	13.120	221.920	1404.68	-51.50	-59.85	-54.01	40°10'32.843"N	104°46'48.671"W	1.83	
1496.00	12.710	221.360	1487.53	-63.74	-74.04	-66.64	40°10'32.702"N	104°46'48.833"W	0.50	
1581.00	12.440	217.930	1570.49	-76.15	-88.28	-78.44	40°10'32.562"N	104°46'48.986"W	0.93	
1666.00	12.050	222.100	1653.56	-88.15	-102.09	-90.02	40°10'32.425"N	104°46'49.135"W	1.14	
1752.00	11.650	217.760	1737.73	-99.91	-115.61	-101.36	40°10'32.291"N	104°46'49.281"W	1.14	
1837.00	11.030	227.770	1821.07	-110.43	-127.87	-112.63	40°10'32.170"N	104°46'49.426"W	2.42	
1922.00	10.680	224.430	1904.55	-119.75	-138.96	-124.17	40°10'32.061"N	104°46'49.575"W	0.85	
2007.00	11.010	226.340	1988.04	-129.23	-150.18	-135.55	40°10'31.950"N	104°46'49.721"W	0.57	
2093.00	11.750	229.060	2072.35	-138.72	-161.59	-148.11	40°10'31.837"N	104°46'49.883"W	1.06	
2178.00	10.290	226.320	2155.78	-147.81	-172.51	-160.14	40°10'31.729"N	104°46'50.038"W	1.82	
2263.00	9.600	233.040	2239.50	-155.62	-182.01	-171.29	40°10'31.635"N	104°46'50.182"W	1.59	
2348.00	10.600	234.030	2323.18	-162.66	-190.86	-183.28	40°10'31.548"N	104°46'50.336"W	1.19	
2434.00	10.970	231.980	2407.66	-170.41	-200.55	-196.13	40°10'31.452"N	104°46'50.502"W	0.62	
2519.00	10.680	230.080	2491.15	-178.56	-210.59	-208.54	40°10'31.353"N	104°46'50.662"W	0.54	
2604.00	11.230	228.680	2574.60	-187.22	-221.11	-220.80	40°10'31.249"N	104°46'50.820"W	0.72	
2689.00	12.660	225.480	2657.76	-197.25	-233.10	-233.66	40°10'31.130"N	104°46'50.985"W	1.85	
2775.00	13.480	224.990	2741.53	-208.83	-246.80	-247.47	40°10'30.995"N	104°46'51.163"W	0.96	
2860.00	12.830	223.770	2824.30	-220.57	-260.62	-261.00	40°10'30.859"N	104°46'51.337"W	0.83	
2945.00	11.760	224.150	2907.35	-231.67	-273.65	-273.56	40°10'30.730"N	104°46'51.499"W	1.26	
3031.00	12.830	226.600	2991.38	-242.52	-286.50	-286.60	40°10'30.603"N	104°46'51.667"W	1.38	
3116.00	11.830	227.230	3074.42	-252.90	-298.90	-299.86	40°10'30.480"N	104°46'51.838"W	1.19	
3201.00	11.880	221.350	3157.61	-263.51	-311.39	-312.03	40°10'30.357"N	104°46'51.995"W	1.42	
3286.00	12.570	222.310	3240.68	-275.06	-324.80	-324.04	40°10'30.224"N	104°46'52.149"W	0.85	
3372.00	10.670	222.010	3324.91	-286.10	-337.63	-335.67	40°10'30.097"N	104°46'52.299"W	2.21	
3457.00	10.760	223.860	3408.43	-296.01	-349.20	-346.43	40°10'29.983"N	104°46'52.438"W	0.42	
3542.00	11.260	228.390	3491.87	-305.45	-360.43	-358.14	40°10'29.872"N	104°46'52.589"W	1.18	
3627.00	13.270	229.230	3574.92	-315.27	-372.32	-371.73	40°10'29.755"N	104°46'52.764"W	2.37	
3713.00	11.110	226.750	3658.98	-325.33	-384.44	-385.24	40°10'29.635"N	104°46'52.938"W	2.58	
3798.00	11.540	228.330	3742.32	-334.72	-395.70	-397.56	40°10'29.524"N	104°46'53.097"W	0.62	



Actual Wellpath Report

RICE 28N-33HZ AWP

Page 3 of 7



REFERENCE WELLPATH IDENTIFICATION				
Operator	KERR-MCGEE OIL & GAS ONSHORE LP		Slot	SLOT#01 RICE 28N-33HZ (614'FSL & 2027'FEL,SEC.33)
Area	COLORADO		Well	RICE 28N-33HZ
Field	WELD COUNTY (KERR MCGEE)		Wellbore	RICE 28N-33HZ AWB
Facility	SEC.33-T3N-R66W			

WELLPATH DATA (162 stations)										
MD [ft]	Inclination [°]	Azimuth [°]	TVD [ft]	Vert Sect [ft]	North [ft]	East [ft]	Latitude	Longitude	DLS [°/100ft]	Comments
3883.00	11.830	226.220	3825.56	-344.47	-407.38	-410.20	40°10'29.408"N	104°46'53.259"W	0.61	
3968.00	14.200	226.700	3908.37	-355.53	-420.57	-424.08	40°10'29.278"N	104°46'53.438"W	2.79	
4053.00	14.880	228.430	3990.65	-367.51	-434.96	-439.83	40°10'29.136"N	104°46'53.641"W	0.95	
4138.00	14.480	226.830	4072.88	-379.60	-449.47	-455.75	40°10'28.992"N	104°46'53.846"W	0.67	
4224.00	13.850	226.510	4156.26	-391.70	-463.91	-471.06	40°10'28.850"N	104°46'54.043"W	0.74	
4309.00	11.650	226.790	4239.16	-402.49	-476.79	-484.70	40°10'28.722"N	104°46'54.219"W	2.59	
4394.00	9.700	225.220	4322.69	-411.68	-487.71	-496.04	40°10'28.614"N	104°46'54.365"W	2.32	
4480.00	9.790	223.850	4407.44	-420.49	-498.09	-506.24	40°10'28.512"N	104°46'54.497"W	0.29	
4565.00	10.750	229.420	4491.08	-429.17	-508.46	-517.27	40°10'28.409"N	104°46'54.639"W	1.62	
4650.00	9.530	224.950	4574.76	-437.63	-518.59	-528.26	40°10'28.309"N	104°46'54.780"W	1.71	
4735.00	8.590	225.920	4658.69	-445.56	-527.99	-537.80	40°10'28.216"N	104°46'54.903"W	1.12	
4820.00	7.380	226.330	4742.87	-452.45	-536.17	-546.30	40°10'28.135"N	104°46'55.013"W	1.43	
4906.00	6.410	221.560	4828.25	-458.75	-543.58	-553.48	40°10'28.062"N	104°46'55.105"W	1.31	
4991.00	5.960	215.240	4912.75	-465.02	-550.74	-559.18	40°10'27.992"N	104°46'55.179"W	0.96	
5076.00	5.190	211.650	4997.35	-471.17	-557.61	-563.74	40°10'27.924"N	104°46'55.237"W	0.99	
5162.00	5.010	205.290	5083.01	-477.28	-564.32	-567.39	40°10'27.857"N	104°46'55.284"W	0.69	
5247.00	3.490	206.560	5167.77	-482.50	-569.99	-570.13	40°10'27.801"N	104°46'55.320"W	1.79	
5333.00	3.120	206.500	5253.63	-486.58	-574.42	-572.34	40°10'27.757"N	104°46'55.348"W	0.43	
5418.00	2.560	213.110	5338.53	-489.90	-578.09	-574.41	40°10'27.721"N	104°46'55.375"W	0.76	
5503.00	2.410	203.960	5423.45	-492.84	-581.31	-576.18	40°10'27.689"N	104°46'55.398"W	0.50	
5588.00	1.110	237.780	5508.41	-494.69	-583.38	-577.60	40°10'27.669"N	104°46'55.416"W	1.90	
5674.00	1.270	229.680	5594.39	-495.53	-584.44	-579.03	40°10'27.658"N	104°46'55.434"W	0.27	
5759.00	1.160	238.890	5679.37	-496.37	-585.50	-580.49	40°10'27.648"N	104°46'55.453"W	0.26	
5844.00	1.170	240.480	5764.35	-497.02	-586.37	-581.98	40°10'27.639"N	104°46'55.472"W	0.04	
5930.00	1.180	226.850	5850.33	-497.84	-587.41	-583.39	40°10'27.629"N	104°46'55.490"W	0.32	
6015.00	1.360	236.140	5935.31	-498.78	-588.57	-584.86	40°10'27.618"N	104°46'55.509"W	0.32	
6100.00	1.340	252.390	6020.29	-499.38	-589.43	-586.65	40°10'27.609"N	104°46'55.532"W	0.45	
6186.00	1.540	249.420	6106.26	-499.79	-590.14	-588.69	40°10'27.602"N	104°46'55.559"W	0.25	
6271.00	1.320	240.460	6191.24	-500.39	-591.02	-590.61	40°10'27.593"N	104°46'55.584"W	0.37	
6356.00	1.430	238.070	6276.21	-501.17	-592.07	-592.36	40°10'27.583"N	104°46'55.606"W	0.15	
6442.00	1.340	235.670	6362.19	-502.05	-593.20	-594.10	40°10'27.572"N	104°46'55.628"W	0.12	
6527.00	1.530	236.540	6447.16	-502.97	-594.39	-595.87	40°10'27.560"N	104°46'55.651"W	0.22	
6612.00	1.430	243.520	6532.13	-503.78	-595.49	-597.77	40°10'27.549"N	104°46'55.676"W	0.24	
6648.00	1.490	236.770	6568.12	-504.12	-595.94	-598.56	40°10'27.545"N	104°46'55.686"W	0.51	
6697.00	1.640	270.470	6617.10	-504.28	-596.29	-599.79	40°10'27.541"N	104°46'55.702"W	1.87	
6740.00	4.910	331.870	6660.04	-502.46	-594.66	-601.28	40°10'27.558"N	104°46'55.721"W	10.16	
6782.00	9.030	339.700	6701.72	-497.54	-589.98	-603.27	40°10'27.604"N	104°46'55.747"W	10.04	
6825.00	13.990	335.480	6743.84	-489.25	-582.08	-606.60	40°10'27.682"N	104°46'55.789"W	11.69	
6868.00	18.770	335.290	6785.08	-477.62	-571.06	-611.65	40°10'27.791"N	104°46'55.855"W	11.12	
6910.00	21.990	342.910	6824.46	-463.36	-557.40	-616.79	40°10'27.926"N	104°46'55.921"W	9.92	
6953.00	23.420	352.720	6864.14	-446.86	-541.22	-620.24	40°10'28.086"N	104°46'55.965"W	9.40	
6995.00	26.070	0.830	6902.29	-429.39	-523.71	-621.16	40°10'28.259"N	104°46'55.977"W	10.24	
7038.00	30.600	359.830	6940.13	-409.21	-503.30	-621.06	40°10'28.460"N	104°46'55.976"W	10.59	
7081.00	35.750	358.650	6976.11	-385.89	-479.79	-621.39	40°10'28.693"N	104°46'55.980"W	12.07	
7123.00	40.180	0.120	7009.21	-360.29	-453.96	-621.65	40°10'28.948"N	104°46'55.983"W	10.76	



Actual Wellpath Report

RICE 28N-33HZ AWP

Page 4 of 7



REFERENCE WELLPATH IDENTIFICATION

Operator	KERR-MCGEE OIL & GAS ONSHORE LP	Slot	SLOT#01 RICE 28N-33HZ (614'FSL & 2027'FEL,SEC.33)
Area	COLORADO	Well	RICE 28N-33HZ
Field	WELD COUNTY (KERR MCGEE)	Wellbore	RICE 28N-33HZ AWB
Facility	SEC.33-T3N-R66W		

WELLPATH DATA (162 stations) † = interpolated/extrapolated station

MD [ft]	Inclination [°]	Azimuth [°]	TVD [ft]	Vert Sect [ft]	North [ft]	East [ft]	Latitude	Longitude	DLS [°/100ft]	Comments
7166.00	44.210	1.770	7041.06	-331.79	-425.09	-621.16	40°10'29.233"N	104°46'55.977"W	9.72	
7209.00	47.870	1.350	7070.91	-301.29	-394.15	-620.32	40°10'29.539"N	104°46'55.966"W	8.54	
7251.00	52.480	3.120	7097.80	-269.59	-361.93	-619.04	40°10'29.857"N	104°46'55.950"W	11.44	
7294.00	56.870	5.110	7122.66	-235.33	-326.95	-616.51	40°10'30.203"N	104°46'55.917"W	10.88	
7337.00	61.210	4.620	7144.77	-199.42	-290.22	-613.39	40°10'30.566"N	104°46'55.877"W	10.14	
7380.00	64.190	3.490	7164.49	-162.09	-252.11	-610.69	40°10'30.943"N	104°46'55.842"W	7.31	
7422.00	67.630	1.780	7181.64	-124.44	-213.82	-608.94	40°10'31.321"N	104°46'55.820"W	8.99	
7465.00	70.950	2.870	7196.84	-84.91	-173.63	-607.30	40°10'31.718"N	104°46'55.799"W	8.08	
7507.00	74.720	4.180	7209.23	-45.63	-133.59	-604.83	40°10'32.114"N	104°46'55.767"W	9.46	
7550.00	77.920	4.030	7219.40	-4.82	-91.92	-601.84	40°10'32.526"N	104°46'55.728"W	7.45	
7593.00	80.950	4.070	7227.28	36.48	-49.76	-598.85	40°10'32.942"N	104°46'55.690"W	7.05	
7635.00	83.890	4.550	7232.82	77.11	-8.25	-595.72	40°10'33.352"N	104°46'55.650"W	7.09	
7678.00	85.760	4.510	7236.70	118.88	34.44	-592.34	40°10'33.774"N	104°46'55.606"W	4.35	
7695.00	86.050	4.370	7237.92	135.42	51.34	-591.03	40°10'33.941"N	104°46'55.589"W	1.89	
7730.00†	87.454	3.501	7239.90	169.58	86.20	-588.63	40°10'34.286"N	104°46'55.558"W	4.72	7" Casing Point
7774.00	89.220	2.410	7241.18	212.72	130.12	-586.36	40°10'34.720"N	104°46'55.529"W	4.72	
7816.00	89.350	0.740	7241.70	254.11	172.10	-585.21	40°10'35.135"N	104°46'55.514"W	3.99	
7859.00	89.010	359.220	7242.32	296.66	215.10	-585.22	40°10'35.560"N	104°46'55.514"W	3.62	
7901.00	88.920	358.970	7243.07	338.31	257.09	-585.89	40°10'35.974"N	104°46'55.523"W	0.63	
7944.00	89.010	359.250	7243.85	380.95	300.07	-586.56	40°10'36.399"N	104°46'55.532"W	0.68	
7987.00	89.130	359.390	7244.55	423.57	343.07	-587.07	40°10'36.824"N	104°46'55.538"W	0.43	
8029.00	88.760	359.100	7245.32	465.21	385.05	-587.62	40°10'37.239"N	104°46'55.545"W	1.12	
8072.00	88.640	358.580	7246.30	507.87	428.03	-588.49	40°10'37.664"N	104°46'55.557"W	1.24	
8115.00	89.130	358.570	7247.13	550.56	471.01	-589.56	40°10'38.088"N	104°46'55.570"W	1.14	
8157.00	90.800	358.680	7247.16	592.26	513.00	-590.57	40°10'38.503"N	104°46'55.583"W	3.98	
8200.00	90.800	359.130	7246.56	634.92	555.99	-591.39	40°10'38.928"N	104°46'55.594"W	1.05	
8242.00	91.160	358.600	7245.84	676.59	597.97	-592.22	40°10'39.343"N	104°46'55.605"W	1.53	
8328.00	91.750	0.020	7243.66	761.82	683.94	-593.26	40°10'40.193"N	104°46'55.618"W	1.79	
8413.00	90.610	359.750	7241.91	845.95	768.92	-593.43	40°10'41.032"N	104°46'55.620"W	1.38	
8499.00	91.260	358.810	7240.50	931.20	854.90	-594.51	40°10'41.882"N	104°46'55.634"W	1.33	
8584.00	89.530	359.150	7239.92	1015.52	939.88	-596.02	40°10'42.722"N	104°46'55.654"W	2.07	
8669.00	87.680	359.520	7241.99	1099.75	1024.84	-597.01	40°10'43.561"N	104°46'55.666"W	2.22	
8754.00	88.460	359.620	7244.85	1183.92	1109.79	-597.64	40°10'44.401"N	104°46'55.675"W	0.93	
8840.00	87.190	359.660	7248.11	1269.04	1195.73	-598.18	40°10'45.250"N	104°46'55.682"W	1.48	
8925.00	87.070	1.340	7252.37	1352.95	1280.61	-597.44	40°10'46.089"N	104°46'55.672"W	1.98	
9010.00	88.020	1.790	7256.01	1436.63	1365.50	-595.12	40°10'46.928"N	104°46'55.642"W	1.24	
9096.00	91.010	1.800	7256.74	1521.31	1451.45	-592.43	40°10'47.777"N	104°46'55.608"W	3.48	
9181.00	90.210	1.240	7255.83	1605.07	1536.41	-590.18	40°10'48.617"N	104°46'55.579"W	1.15	
9266.00	90.060	0.950	7255.63	1688.95	1621.40	-588.55	40°10'49.457"N	104°46'55.558"W	0.38	
9352.00	91.430	1.200	7254.52	1773.81	1707.37	-586.94	40°10'50.306"N	104°46'55.537"W	1.62	
9437.00	91.840	1.150	7252.09	1857.63	1792.32	-585.20	40°10'51.146"N	104°46'55.514"W	0.49	
9522.00	91.260	0.360	7249.79	1941.56	1877.28	-584.08	40°10'51.985"N	104°46'55.500"W	1.15	
9608.00	92.020	0.300	7247.33	2026.56	1963.24	-583.58	40°10'52.835"N	104°46'55.494"W	0.89	
9693.00	90.520	0.570	7245.45	2110.57	2048.22	-582.94	40°10'53.674"N	104°46'55.485"W	1.79	
9778.00	90.270	0.650	7244.86	2194.56	2133.21	-582.03	40°10'54.514"N	104°46'55.474"W	0.31	



Actual Wellpath Report

RICE 28N-33HZ AWP

Page 5 of 7



REFERENCE WELLPATH IDENTIFICATION				
Operator	KERR-MCGEE OIL & GAS ONSHORE LP		Slot	SLOT#01 RICE 28N-33HZ (614'FSL & 2027'FEL,SEC.33)
Area	COLORADO		Well	RICE 28N-33HZ
Field	WELD COUNTY (KERR MCGEE)		Wellbore	RICE 28N-33HZ AWB
Facility	SEC.33-T3N-R66W			

WELLPATH DATA (162 stations)										
MD [ft]	Inclination [°]	Azimuth [°]	TVD [ft]	Vert Sect [ft]	North [ft]	East [ft]	Latitude	Longitude	DLS [°/100ft]	Comments
9863.00	90.460	359.870	7244.32	2278.62	2218.21	-581.65	40°10'55.354"N	104°46'55.469"W	0.94	
9949.00	90.730	0.310	7243.43	2363.71	2304.20	-581.51	40°10'56.204"N	104°46'55.467"W	0.60	
10034.00	88.790	359.330	7243.78	2447.87	2389.19	-581.78	40°10'57.044"N	104°46'55.471"W	2.56	
10119.00	88.400	359.210	7245.87	2532.12	2474.16	-582.86	40°10'57.884"N	104°46'55.485"W	0.48	
10204.00	89.530	358.020	7247.40	2616.49	2559.12	-584.91	40°10'58.723"N	104°46'55.511"W	1.93	
10290.00	89.470	357.600	7248.15	2702.01	2645.05	-588.20	40°10'59.572"N	104°46'55.553"W	0.49	
10375.00	90.700	359.080	7248.03	2786.45	2730.01	-590.66	40°11'00.412"N	104°46'55.585"W	2.26	
10460.00	91.160	359.310	7246.65	2870.73	2814.99	-591.86	40°11'01.252"N	104°46'55.601"W	0.61	
10546.00	90.770	358.380	7245.20	2956.06	2900.96	-593.59	40°11'02.101"N	104°46'55.623"W	1.17	
10631.00	90.240	357.990	7244.45	3040.52	2985.92	-596.28	40°11'02.941"N	104°46'55.658"W	0.77	
10716.00	88.020	359.200	7245.74	3124.90	3070.87	-598.37	40°11'03.780"N	104°46'55.685"W	2.97	
10801.00	89.720	359.510	7247.42	3209.14	3155.85	-599.32	40°11'04.620"N	104°46'55.697"W	2.03	
10887.00	90.240	0.890	7247.45	3294.21	3241.85	-599.02	40°11'05.470"N	104°46'55.693"W	1.71	
10929.00	90.120	1.060	7247.31	3335.67	3283.84	-598.31	40°11'05.885"N	104°46'55.684"W	0.50	
10972.00	90.060	3.330	7247.25	3377.96	3326.81	-596.66	40°11'06.309"N	104°46'55.663"W	5.28	
11014.00	90.060	3.390	7247.20	3419.10	3368.73	-594.20	40°11'06.724"N	104°46'55.631"W	0.14	
11057.00	90.460	2.910	7247.01	3461.25	3411.67	-591.84	40°11'07.148"N	104°46'55.601"W	1.45	
11142.00	91.010	2.830	7245.92	3544.66	3496.55	-587.58	40°11'07.987"N	104°46'55.546"W	0.65	
11228.00	89.780	1.950	7245.32	3629.18	3582.48	-583.99	40°11'08.836"N	104°46'55.500"W	1.76	
11313.00	88.920	359.840	7246.29	3713.09	3667.45	-582.67	40°11'09.676"N	104°46'55.482"W	2.68	
11399.00	90.120	359.750	7247.01	3798.24	3753.45	-582.97	40°11'10.526"N	104°46'55.486"W	1.40	
11483.00	91.660	358.500	7245.70	3881.54	3837.42	-584.26	40°11'11.355"N	104°46'55.503"W	2.36	
11569.00	92.060	356.840	7242.91	3967.04	3923.30	-587.75	40°11'12.204"N	104°46'55.548"W	1.98	
11654.00	92.740	356.680	7239.35	4051.64	4008.09	-592.55	40°11'13.042"N	104°46'55.610"W	0.82	
11739.00	93.190	356.470	7234.96	4136.23	4092.83	-597.62	40°11'13.879"N	104°46'55.675"W	0.58	
11750.00	93.260	356.260	7234.34	4147.17	4103.79	-598.32	40°11'13.988"N	104°46'55.684"W	2.01	Last BHI MWD Survey
11810.00	93.260	356.260	7230.92	4206.89	4163.56	-602.23	40°11'14.578"N	104°46'55.735"W	0.00	Projection to Bit

HOLE & CASING SECTIONS - Ref Wellbore: RICE 28N-33HZ AWB Ref Wellpath: RICE 28N-33HZ AWP									
String/Diameter	Start MD [ft]	End MD [ft]	Interval [ft]	Start TVD [ft]	End TVD [ft]	Start N/S [ft]	Start E/W [ft]	End N/S [ft]	End E/W [ft]
13.5in Open Hole	17.00	720.00	703.00	17.00	719.99	0.00	0.00	-2.98	2.01
9.625in Casing Surface	17.00	720.00	703.00	17.00	719.99	0.00	0.00	-2.98	2.01
8.75in Open Hole	720.00	7742.00	7022.00	719.99	7240.38	-2.98	2.01	98.17	-587.93
7in Casing Intermediate	17.00	7730.00	7713.00	17.00	7239.90	0.00	0.00	86.20	-588.63
6.125in Open Hole	7730.00	11810.00	4080.00	7239.90	7230.92	86.20	-588.63	4163.56	-602.23



Actual Wellpath Report

RICE 28N-33HZ AWP

Page 6 of 7



REFERENCE WELLPATH IDENTIFICATION			
Operator	KERR-MCGEE OIL & GAS ONSHORE LP	Slot	SLOT#01 RICE 28N-33HZ (614'FSL & 2027'FEL,SEC.33)
Area	COLORADO	Well	RICE 28N-33HZ
Field	WELD COUNTY (KERR MCGEE)	Wellbore	RICE 28N-33HZ AWB
Facility	SEC.33-T3N-R66W		

TARGETS									
Name	MD [ft]	TVD [ft]	North [ft]	East [ft]	Grid East [US ft]	Grid North [US ft]	Latitude	Longitude	Shape
RICE 15-33HZ PAD SECTION LINES		0.00	0.00	0.00	3201189.88	1307759.68	40°10'33.434"N	104°46'47.975"W	polygon
RICE 15-33HZ PAD HARDLINES (460' SETBACKS)		7178.00	0.00	0.00	3201189.88	1307759.68	40°10'33.434"N	104°46'47.975"W	polygon
RICE 28N-33HZ BHL ON PLAT (460'FNL & 2611'FEL,REV-1)		7178.00	4188.73	-604.58	3200551.34	1311943.18	40°11'14.827"N	104°46'55.765"W	point
RICE 28N-33HZ BHL ON PLAT (460'FNL & 2611'FEL,REV-2)		7240.00	4188.73	-604.58	3200551.34	1311943.18	40°11'14.827"N	104°46'55.765"W	point

WELLPATH COMPOSITION - Ref Wellbore: RICE 28N-33HZ AWB Ref Wellpath: RICE 28N-33HZ AWP				
Start MD [ft]	End MD [ft]	Positional Uncertainty Model	Log Name/Comment	Wellbore
17.00	662.00	Generic gyro - continuous (Standard)	GYRODATA SURVEYS <117-662>	RICE 28N-33HZ AWB
662.00	7695.00	NaviTrak (Standard)	BHI MWD SURVEYS 8 3/4" HOLE <775-7695>	RICE 28N-33HZ AWB
7695.00	11750.00	OnTrak (Standard)	BHI MWD SURVEYS 6 1/8" HOLE <7774-11750>	RICE 28N-33HZ AWB
11750.00	11810.00	Blind Drilling (std)	Projection to bit	RICE 28N-33HZ AWB



Actual Wellpath Report

RICE 28N-33HZ AWP

Page 7 of 7



REFERENCE WELLPATH IDENTIFICATION

Operator	KERR-MCGEE OIL & GAS ONSHORE LP	Slot	SLOT#01 RICE 28N-33HZ (614'FSL & 2027'FEL,SEC.33)
Area	COLORADO	Well	RICE 28N-33HZ
Field	WELD COUNTY (KERR MCGEE)	Wellbore	RICE 28N-33HZ AWB
Facility	SEC.33-T3N-R66W		

WELLPATH COMMENTS

MD [ft]	Inclination [°]	Azimuth [°]	TVD [ft]	Comment
17.00	0.000	129.120	17.00	Tie-On
117.00	0.250	129.120	117.00	Begin GYRO Surveys
662.00	0.680	156.320	661.99	Tie-Into GYRO Surveys
775.00	0.640	151.240	774.98	Begin BHI MWD Surveys
7730.00	87.454	3.501	7239.90	7" Casing Point
11750.00	93.260	356.260	7234.34	Last BHI MWD Survey
11810.00	93.260	356.260	7230.92	Projection to Bit