

---

**WPX ENERGY ROCKY MOUNTAIN LLC-EBUS**

---

**KP 443-21  
MAMM CREEK  
Garfield County , Colorado**

**Cement Surface Casing**  
26-Feb-2012

**Post Job Report**

*The Road to Excellence Starts with Safety*

<b>Sold To #:</b> 300721	<b>Ship To #:</b> 2904877	<b>Quote #:</b>	<b>Sales Order #:</b> 9216474
<b>Customer:</b> WPX ENERGY ROCKY MOUNTAIN LLC-EBUS		<b>Customer Rep:</b> Moore, Frank	
<b>Well Name:</b> KP		<b>Well #:</b> 443-21	<b>API/UWI #:</b> 05-045-20707
<b>Field:</b> MAMM CREEK	<b>City (SAP):</b> SILT	<b>County/Parish:</b> Garfield	<b>State:</b> Colorado
<b>Lat:</b> N 39.506 deg. OR N 39 deg. 30 min. 20.509 secs.		<b>Long:</b> W 107.552 deg. OR W -108 deg. 26 min. 54.6 secs.	
<b>Contractor:</b> NABORS 573		<b>Rig/Platform Name/Num:</b> NABORS 573	
<b>Job Purpose:</b> Cement Surface Casing			
<b>Well Type:</b> Development Well		<b>Job Type:</b> Cement Surface Casing	
<b>Sales Person:</b> SCOTT, KYLE		<b>Srvc Supervisor:</b> SLAUGHTER, JESSE <b>MBU ID Emp #:</b> 454315	

**Job Personnel**

HES Emp Name	Exp Hrs	Emp #	HES Emp Name	Exp Hrs	Emp #	HES Emp Name	Exp Hrs	Emp #
ANDREWS, ANTHONY Michael	6	321604	DOUT, JACOB J	6	430298	PARKER, BRANDON	6	503646
SLAUGHTER, JESSE Dean	6	454315						

**Equipment**

HES Unit #	Distance-1 way	HES Unit #	Distance-1 way	HES Unit #	Distance-1 way	HES Unit #	Distance-1 way
10011429	60 mile	10867322	60 mile	10998512	60 mile	11360871	60 mile
11542767	60 mile	11583933	60 mile				

**Job Hours**

Date	On Location Hours	Operating Hours	Date	On Location Hours	Operating Hours	Date	On Location Hours	Operating Hours
02-26-2012	6	3						
<b>TOTAL</b>	<i>Total is the sum of each column separately</i>							

**Job**

**Job Times**

Formation Name	Top	Bottom	Called Out	Date	Time	Time Zone
Formation Depth (MD)			On Location	26 - Feb - 2012	03:30	MST
Form Type	BHST		Job Started	26 - Feb - 2012	06:29	MST
Job depth MD	1404. ft	Job Depth TVD	1404. ft	Job Completed	26 - Feb - 2012	07:35
Water Depth		Wk Ht Above Floor	10. ft	Departed Loc	26 - Feb - 2012	09:30
Perforation Depth (MD)	From	To				

**Well Data**

Description	New / Used	Max pressure psig	Size in	ID in	Weight lbm/ft	Thread	Grade	Top MD ft	Bottom MD ft	Top TVD ft	Bottom TVD ft
<b>Sales/Rental/3<sup>rd</sup> Party (HES)</b>											

Description	Qty	Qty uom	Depth	Supplier
PLUG,CMTG, TOP, 9 5/8, HWE, 8.16 MIN/9.06 MA	1	EA		

**Tools and Accessories**

Type	Size	Qty	Make	Depth	Type	Size	Qty	Make	Depth	Type	Size	Qty	Make
Guide Shoe					Packer					Top Plug	9.625	1	HES
Float Shoe					Bridge Plug					Bottom Plug			
Float Collar					Retainer					SSR plug set			
Insert Float										Plug Container	9.625	1	HES
Stage Tool										Centralizers			

**Miscellaneous Materials**

Gelling Agt	Conc	Surfactant	Conc	Acid Type	Qty	Conc %
Treatment Fld	Conc	Inhibitor	Conc	Sand Type	Size	Qty

**Fluid Data**

Stage/Plug #: 1									
Fluid #	Stage Type	Fluid Name	Qty	Qty uom	Mixing Density lbm/gal	Yield ft <sup>3</sup> /sk	Mix Fluid Gal/sk	Rate bbl/min	Total Mix Fluid Gal/sk

Stage/Plug #: 1									
Fluid #	Stage Type	Fluid Name	Qty	Qty uom	Mixing Density lbm/gal	Yield ft <sup>3</sup> /sk	Mix Fluid Gal/sk	Rate bbl/min	Total Mix Fluid Gal/sk
1	Fresh Water	FRESH WATER	20.00	bbl	8.33	.0	.0	4	
2	VersaCem Lead	VERSACEM (TM) SYSTEM (452010)	215.0	sacks	12.3	2.38	13.75	8	13.75
3	VersaCem Tail	VERSACEM (TM) SYSTEM (452010)	160.0	sacks	12.8	2.11	11.75	8	11.75
4	Displacement Fluid	FRESH WATER	107.00	bbl	8.33	.0	.0	10	
Calculated Values		Pressures		Volumes					
Displacement	107	Shut In: Instant		Lost Returns		Cement Slurry	152	Pad	
Top Of Cement	SURFACE	5 Min		Cement Returns	20	Actual Displacement	107	Treatment	
Frac Gradient		15 Min		Spacers	20	Load and Breakdown		Total Job	279
Rates									
Circulating		Mixing	8	Displacement	10	AVERAGE			9
Cement Left In Pipe	Amount	0 ft	Reason	Shoe Joint					
Frac Ring # 1 @	ID	Frac ring # 2 @	ID	Frac Ring # 3 @	ID	Frac Ring # 4 @	ID		
The Information Stated Herein Is Correct				Customer Representative Signature					

*The Road to Excellence Starts with Safety*

<b>Sold To #:</b> 300721	<b>Ship To #:</b> 2904877	<b>Quote #:</b>	<b>Sales Order #:</b> 9216474
<b>Customer:</b> WPX ENERGY ROCKY MOUNTAIN LLC-EBUS		<b>Customer Rep:</b> Moore, Frank	
<b>Well Name:</b> KP		<b>Well #:</b> 443-21	<b>API/UWI #:</b> 05-045-20707
<b>Field:</b> MAMM CREEK	<b>City (SAP):</b> SILT	<b>County/Parish:</b> Garfield	<b>State:</b> Colorado
<b>Legal Description:</b>			
<b>Lat:</b> N 39.506 deg. OR N 39 deg. 30 min. 20.509 secs.		<b>Long:</b> W 107.552 deg. OR W -108 deg. 26 min. 54.6 secs.	
<b>Contractor:</b> NABORS 573		<b>Rig/Platform Name/Num:</b> NABORS 573	
<b>Job Purpose:</b> Cement Surface Casing			<b>Ticket Amount:</b>
<b>Well Type:</b> Development Well		<b>Job Type:</b> Cement Surface Casing	
<b>Sales Person:</b> SCOTT, KYLE		<b>Srvc Supervisor:</b> SLAUGHTER, JESSE	<b>MBU ID Emp #:</b> 454315

Activity Description	Date/Time	Cht #	Rate bbl/min	Volume bbl		Pressure psig		Comments
				Stage	Total	Tubing	Casing	
Call Out	02/25/2012 23:00							TD 1406 FT, TP 1404 FT, SHOE 44.45 FT, CSG 9 5/8 IN 32.3 LB/FT, HOLE 13 1/2 IN, MUD WT 9.5 PPG
Pre-Convoy Safety Meeting	02/26/2012 00:50							WITH ALL HES PERSONNEL
Crew Leave Yard	02/26/2012 01:00							
Arrive At Loc	02/26/2012 03:30							RIG WAS RUNNING CASING UPON HES ARRIVAL
Assessment Of Location Safety Meeting	02/26/2012 04:30							WITH ALL HES PERSONNEL
Other	02/26/2012 04:40							SPOT EQUIPMENT
Pre-Rig Up Safety Meeting	02/26/2012 04:50							WITH ALL HES PERSONNEL
Rig-Up Equipment	02/26/2012 05:00							
Pre-Job Safety Meeting	02/26/2012 06:15							WITH ALL PERSONNEL ON LOCATION
Start Job	02/26/2012 06:29							
Other	02/26/2012 06:29		2	2			45.0	FILL LINES WITH FRESH WATER
Test Lines	02/26/2012 06:34							TESTED LINES TO 4500 PSI PRESSURE HOLDING
Pump Spacer 1	02/26/2012 06:41		4	20			115.0	FRESH WATER
Pump Lead Cement	02/26/2012 06:48		8	91.1			360.0	215 SKS AT 12.3 PPG, 2.38 FT3/SK, 13.75 GAL/SK
Activity Description	Date/Time	Cht	Rate bbl/min	Volume bbl		Pressure psig		Comments

Sold To # : 300721

Ship To # :2904877

Quote # :

Sales Order # : 9216474

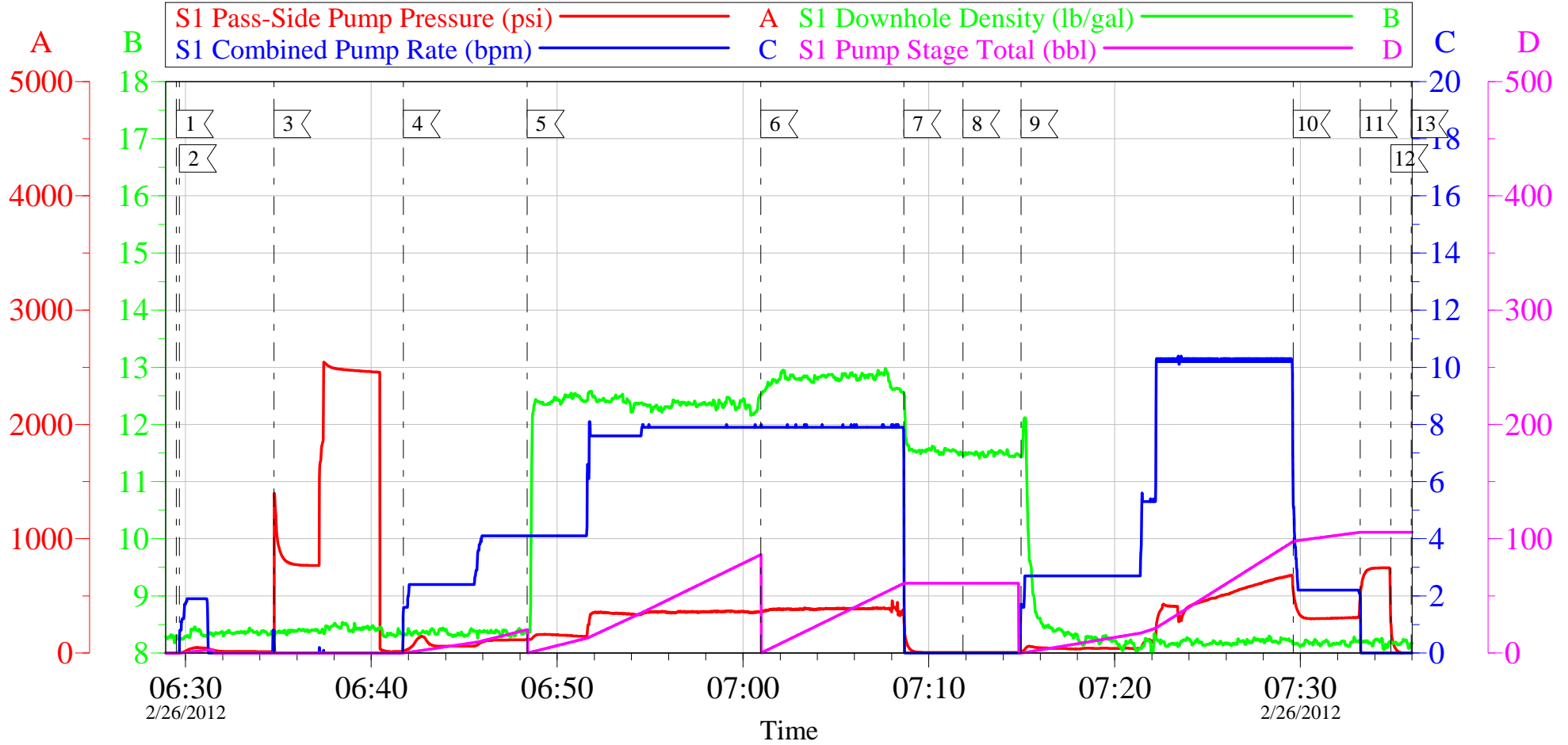
SUMMIT Version: 7.3.0021

Saturday, March 03, 2012 03:19:00

		#		Stage	Total	Tubing	Casing	
Pump Tail Cement	02/26/2012 07:00		8	60.1			400.0	160 SKS AT 12.8 PPG, 2.11 FT3/SK, 11.75 GAL/SK
Shutdown	02/26/2012 07:08							
Drop Top Plug	02/26/2012 07:11							PLUG LAUNCHED
Pump Displacement	02/26/2012 07:14		10	97			700.0	FRESH WATER
Slow Rate	02/26/2012 07:29		2	10			315.0	SLOW RATE 10 BBLS PRIOR TO CALCULATED DISPLACEMENT
Bump Plug	02/26/2012 07:33		2		107		740.0	PLUG BUMPED
Check Floats	02/26/2012 07:34							FLOATS HOLDING. HES RETURNED 1 BBL H2O TO PUMP
End Job	02/26/2012 07:35							PIPE WAS STATIC DURING JOB, GOOD CIRCULATION THROUGHOUT JOB, HES RETURNED 20 BBL CEMENT TO SURFACE
Pre-Rig Down Safety Meeting	02/26/2012 07:40							WITH ALL HES PERSONNEL
Rig-Down Equipment	02/26/2012 07:45							
Pre-Convoy Safety Meeting	02/26/2012 09:20							WITH ALL HES PERSONNEL
Crew Leave Location	02/26/2012 09:30							
Comment	02/26/2012 09:31							THANK YOU FOR USING HALLIBURTON CEMENT DEPARTMENT. JESSE SLAUGHTER AND CREW.

# WILLIAMS KP 443-21

## 9 5/8 SURFACE



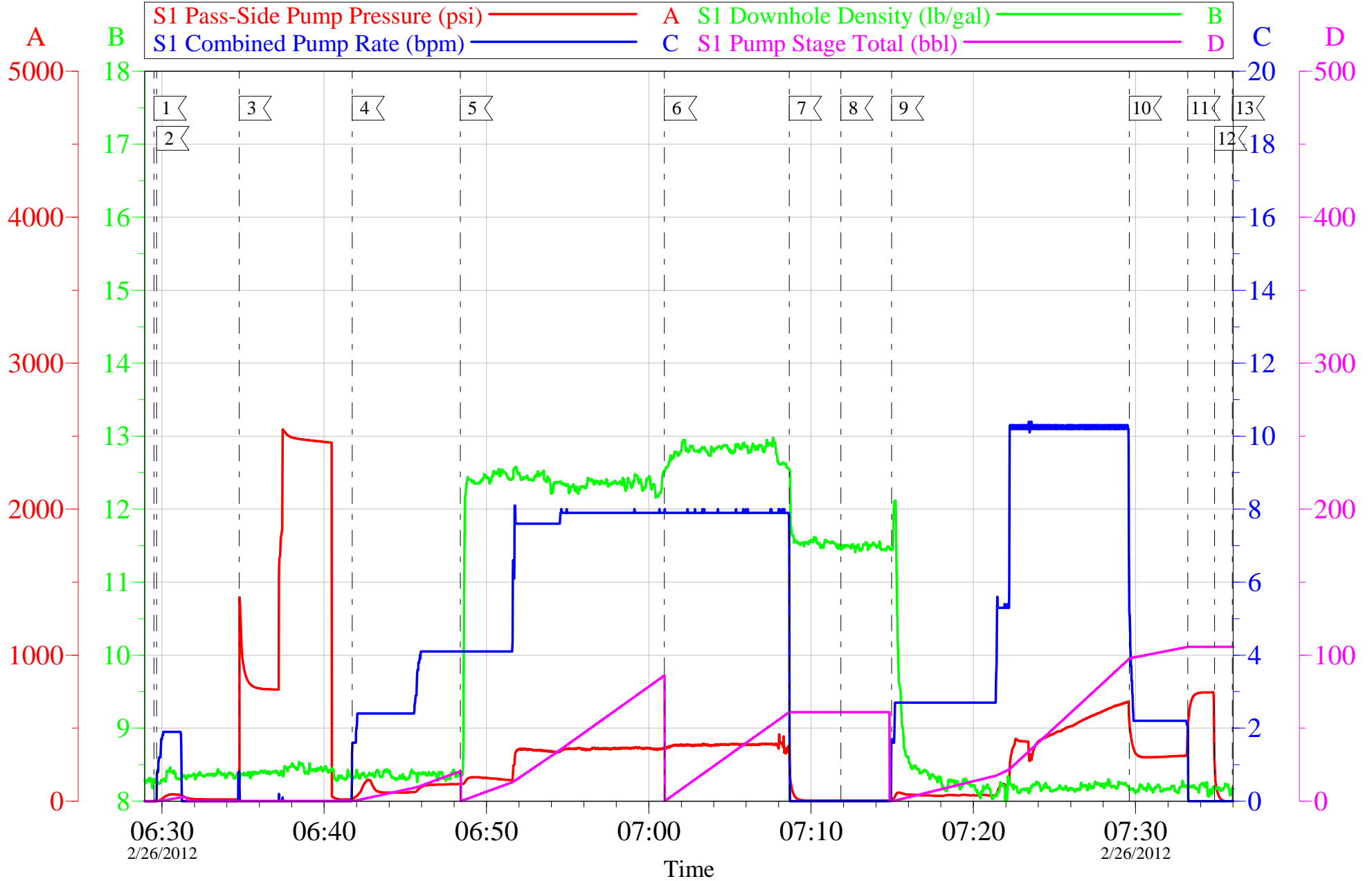
### Local Event Log

1 START JOB	06:29:31	2 PRIME LINES	06:29:41	3 TEST LINES	06:34:46
4 PUMP H2O SPACER	06:41:43	5 PUMP LEAD CEMENT	06:48:23	6 PUMP TAIL CEMENT	07:00:58
7 SHUTDOWN	07:08:40	8 DROP TOP PLUG	07:11:50	9 PUMP DISPLACEMENT	07:14:57
10 SLOW RATE	07:29:37	11 BUMP PLUG	07:33:13	12 CHECK FLOATS	07:34:52
13 END JOB	07:35:58				

Customer: WILLIAMS	Job Date: 26-Feb-2012	Sales Order #: 9216474
Well Description: KP 443-21	Job Type: SURFACE	ADC Used: YES
Customer Rep: FRANK MOORE	Cement Supervisor: JESSE SLAUGHTER	Elite #1: ANTHONY ANDREWS

# WILLIAMS KP 443-21

## 9 5/8 SURFACE



Customer: WILLIAMS	Job Date: 26-Feb-2012	Sales Order #: 9216474
Well Description: KP 443-21	Job Type: SURFACE	ADC Used: YES
Customer Rep: FRANK MOORE	Cement Supervisor: JESSE SLAUGHTER	Elite #1: ANTHONY ANDREWS

<b>Sales Order #:</b> 9216474	<b>Line Item:</b> 10	
<b>Customer:</b> WPX ENERGY ROCKY MOUNTAIN LLC-EBUS		<b>Job Type (BOM):</b> CMT SURFACE CASING BOM
<b>Customer Rep./Phone:</b> FRANK MOORE		<b>API / UWI: (leave blank if unknown)</b> 05-045-20707
<b>Well Name:</b> KP		<b>Well Number:</b> 443-21
<b>Well Type:</b> Development Well	<b>Well Country:</b> United States of America	
<b>H2S Present:</b>	<b>Well State:</b> Colorado	<b>Well County:</b> Garfield

### KEY PERFORMANCE INDICATORS

General	
<b>Survey Conducted Date</b>	2/25/2012
The date the survey was conducted	

Cementing KPI Survey	
<b>Type of Job</b>	0
Select the type of job. (Cementing or Non-Cementing)	
<b>Select the Maximum Deviation range for this Job</b>	Vertical
What is the highest deviation for the job you just completed? This may not be the maximum well deviation.	
<b>Total Operating Time (hours)</b>	3
Total Operating Hours Including Rig-up, Pumping, Rig-down. Enter in decimal format.	
<b>HSE Incident, Accident, Injury</b>	No
HSE Incident, Accident, Injury. This should be recordable incidents only.	
<b>Was the job purpose achieved?</b>	Yes
Was the job delivered correctly as per customer agreed design?	
<b>Operating Hours (Pumping Hours)</b>	1
Total number of hours pumping fluid on this job. Enter in decimal format.	
<b>Customer Non-Productive Rig Time (hrs)</b>	0
Lost time due to Halliburton in the start, execution, or completion of an ordered service or product, or delays in a follow-on service. Enter in decimal format. 0 if none.	
<b>Type of Rig Classification Job Was Performed</b>	Drilling Rig (Portable)
Type Of Rig (classification) Job Was Performed On	
<b>Number Of JSAs Performed</b>	6
Number Of Jsas Performed	
<b>Number of Unplanned Shutdowns</b>	0
Unplanned shutdown is when injection stops for any period of time.	
<b>Was this a Primary Cement Job (Yes / No)</b>	Yes

<b>Sales Order #:</b> 9216474	<b>Line Item:</b> 10	
<b>Customer:</b> WPX ENERGY ROCKY MOUNTAIN LLC-EBUS		<b>Job Type (BOM):</b> CMT SURFACE CASING BOM
<b>Customer Rep./Phone:</b> FRANK MOORE		<b>API / UWI: (leave blank if unknown)</b> 05-045-20707
<b>Well Name:</b> KP		<b>Well Number:</b> 443-21
<b>Well Type:</b> Development Well	<b>Well Country:</b> United States of America	
<b>H2S Present:</b>	<b>Well State:</b> Colorado	<b>Well County:</b> Garfield

Primary Cement Job= Casing job, Liner job, or Tie-back job.	
<b>Did We Run Wiper Plugs?</b> Did We Run Top And Bottom Casing Wiper Plugs?	Top
<b>Mixing Density of Job Stayed in Designed Density Range (0-100%)</b> Density Range defined as +/- .20 ppg. Calculation: Total BBLs cement mixed at designed density divided by total BBLs of cement multiplied by 100	98
<b>Was Automated Density Control Used?</b> Was Automated Density Control (ADC) Used ?	Yes
<b>Pump Rate (percent) of Job Stayed At Designed Pump Rate</b> Pump Rate range defined as +/- 1bbl/min. Calculation: Total BBLs of fluid pumped at the designed rate divided by Total BBLs of fluid pumped, multiplied by 100	98
<b>Nbr of Remedial Sqz Jobs Rqd - Competition</b> Number Of Remedial Squeeze Jobs Required After Primary Job Performed By Competition	0
<b>Nbr of Remedial Plug Jobs Rqd - HES</b> Number Of Remedial Plug Jobs Needed After Primary Plug Pumped By HES	0
<b>Nbr of Remedial Sqz Jobs Rqd - HES</b> Number Of Remedial Squeeze Jobs Required After Primary Job Performed By HES	0