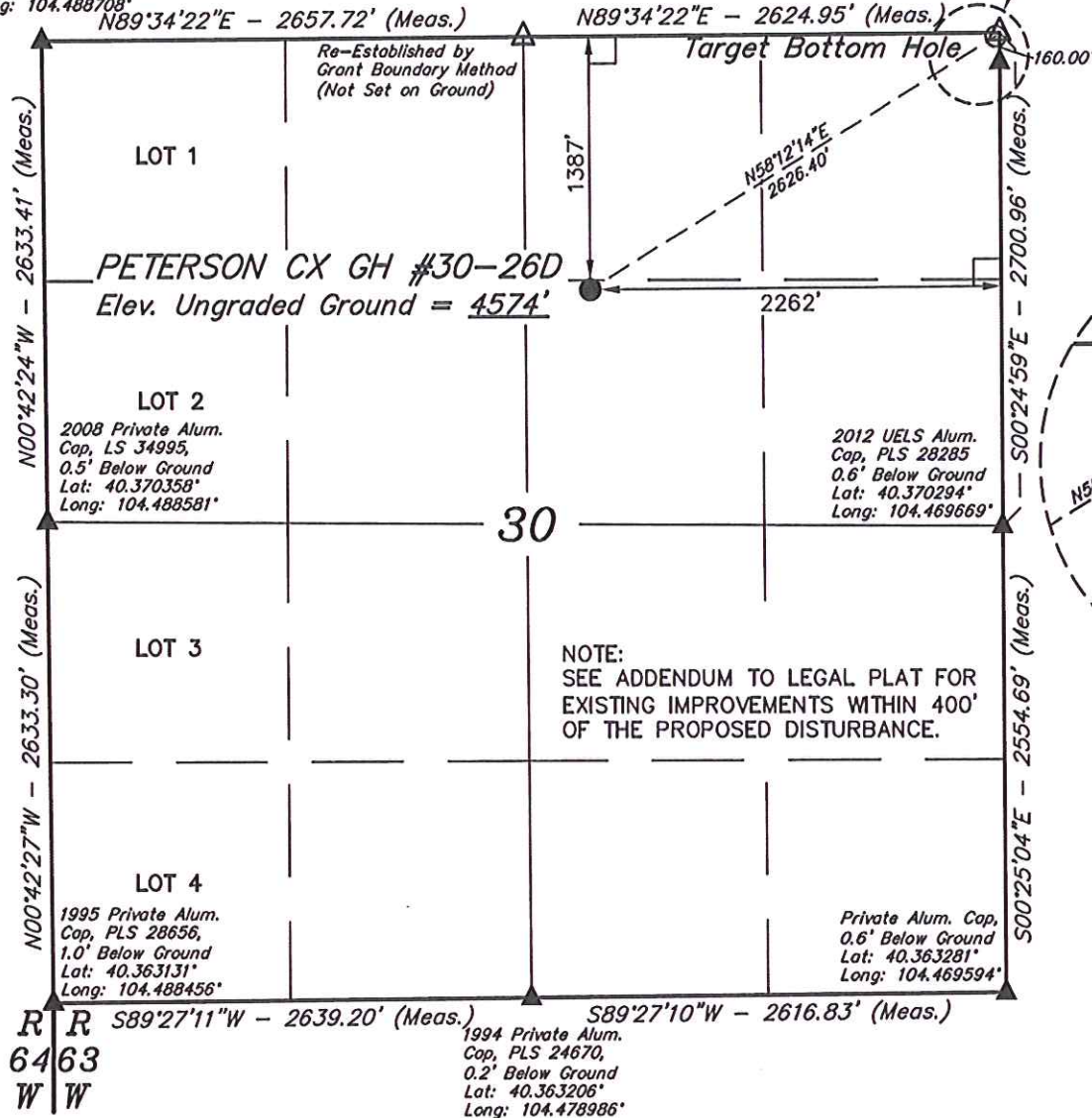


T5N, R63W, 6th P.M.

1998 Private Alum.
Cap, LS 16415,
0.1' Below Ground
Lat: 40.377586°
Long: 104.488708°

DETAIL A
See Below Right



GREAT WESTERN OIL & GAS COMPANY

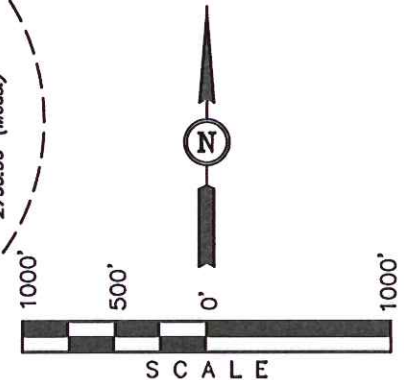
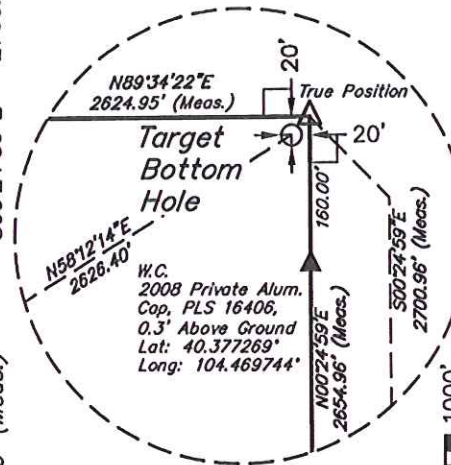
Well location, PETERSON CX GH #30-26D, located
as shown in the SW 1/4 NE 1/4 of Section 30,
T5N, R63W, 6th P.M., Weld County, Colorado.

BASIS OF ELEVATION

USGS COOPERATIVE BASE NETWORK CONTROL STATION,
DESIGNATION 'M414'. NGS DATA SHEET LISTS THE
NAVD 88 ELEVATION AS BEING 4600.58 FEET

BASIS OF BEARINGS

BASIS OF BEARINGS IS A G.P.S. OBSERVATION.



CERTIFICATE

THIS IS TO CERTIFY THAT THE ABOVE PLAT WAS PREPARED FROM
FIELD NOTES OF ACTUAL SURVEYS MADE BY ME OR UNDER MY
SUPERVISION AND THAT THE SAME ARE TRUE AND CORRECT TO THE
BEST OF MY KNOWLEDGE AND BELIEF.

REGISTERED LAND SURVEYOR
REGISTRATION NO. 17492
STATE OF COLORADO

UINTAH ENGINEERING & LAND SURVEYING

85 SOUTH 200 EAST - VERNAL, UTAH 84078

(435) 789-1017

LEGEND:

△ = SECTION CORNERS RE-ESTABLISHED
(Not Set on Ground.)

└ = 90° SYMBOL

● = PROPOSED WELL HEAD.

▲ = SECTION CORNERS LOCATED.

PDOP = 1.1

NAD 83 (TARGET BOTTOM HOLE)	NAD 83 (SURFACE LOCATION)
LATITUDE = 40°22'39.55" (40.377653)	LATITUDE = 40°22'25.85" (40.373847)
LONGITUDE = 104°28'11.35" (104.469819)	LONGITUDE = 104°28'40.18" (104.477828)
NAD 27 (TARGET BOTTOM HOLE)	NAD 27 (SURFACE LOCATION)
LATITUDE = 40°22'39.62" (40.377672)	LATITUDE = 40°22'25.92" (40.373867)
LONGITUDE = 104°28'09.51" (104.469308)	LONGITUDE = 104°28'38.34" (104.477317)

SCALE 1" = 1000'	DATE SURVEYED: 05-18-12	DATE DRAWN: 06-05-12
PARTY Z.B. A.G. J.W.	REFERENCES G.L.O. PLAT	
WEATHER WARM	FILE GREAT WESTERN OIL & GAS COMPANY	