

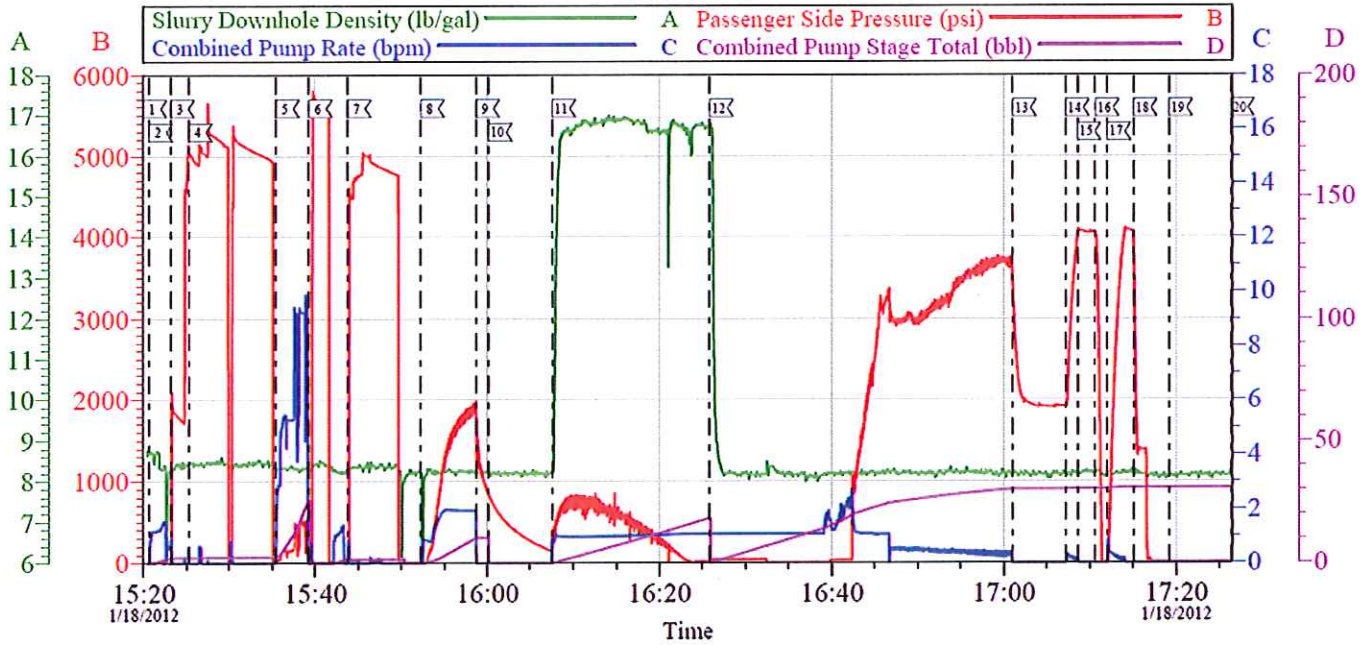
The Road to Excellence Starts with Safety

Sold To #: 300721	Ship To #: 2698665	Quote #:	Sales Order #: 9189278
Customer: WILLIAMS PRODUCTION RMT INC - EBUS		Customer Rep: Dunnick, Brian	
Well Name: RWF	Well #: 434-8	API/UWI #: 05-045-12813	
Field: Rulison	City (SAP): RIFLE	County/Parish: Garfield	State: Colorado
Legal Description:			
Lat: N 39.537 deg. OR N 39 deg. 32 min. 14.294 secs.		Long: W 107.905 deg. OR W -108 deg. 5 min. 43.508 secs.	
Contractor: WORKOVER		Rig/Platform Name/Num: WORKOVER	
Job Purpose: Squeeze Perfs			Ticket Amount:
Well Type: Development Well		Job Type: Squeeze Perfs	
Sales Person: MAYO, MARK		Srcv Supervisor: PONDER, THOMAS	
		MBU ID Emp #: 427112	

Activity Description	Date/Time	Cht #	Rate bbl/min	Volume bbl		Pressure psig		Comments
				Stage	Total	Tubing	Casing	
Crew Leave Location	01/18/2012 13:00							LEFT FROM RWF 334-9
Call Out	01/18/2012 13:00							ALL HES PRESENT FOR PRE CONVOY SAFETY HUDDLE
Arrive At Loc	01/18/2012 13:30							RIG WAS STILL RUNNING TUBING INTO THE WELL WHEN CREW ARRIVED ON LOCATION
Assessment Of Location Safety Meeting	01/18/2012 13:35							TUBING- 2 3/8" 4.7# L-80, CASING- 4 1/2" 11.6#, BRIDGE PLUG @ 7005', WELL FLUID- 8.4 PPG, TOP PERFS @ 6675', BOTTOM PERFS @ 6908', 4 1/2" RETRIEVABLE PACKER SET @ 6583
Rig-Up Equipment	01/18/2012 13:45							
Safety Meeting	01/18/2012 15:00							ALL HES PRESENT, RIG CREW PRESENT
Start Job	01/18/2012 15:20							
Other	01/18/2012 15:20		2	2		.0		FILL LINES
Test Lines	01/18/2012 15:23		0.1	0.1		5035.0		MAX PSI 4500, HAD A HARD TIME GETTING A GOOD PRESSURE TEST, ENDED WITH LOSING 45 PSI PER MIN
Injection Test	01/18/2012 15:52		2	10		1963.0		ISIP 1440

Activity Description	Date/Time	Cht #	Rate bbl/min	Volume bbl		Pressure psig		Comments
				Stage	Total	Tubing	Casing	
Other	01/18/2012 16:00							MIX CEMENT
Pump Cement	01/18/2012 16:07		1	20.3		852.0		115 SKS 17.0 PPG 0.99 FT3/SK 3.77 GAL/SK
Pump Displacement	01/18/2012 16:25		1	24.5		3765. 0		FRESH WATER, SPOTTED 1 BBL SHORT
Other	01/18/2012 17:01					1916. 0		AS PER CUSTOMER REQUEST, HESITATED
Pump Water	01/18/2012 17:07		0.5	0.5	25	4098. 0		SQUEEZED ON HOLE
Other	01/18/2012 17:08					4057. 0		AS PER CUSTOMER REQUEST, HESITATED
Release Casing Pressure	01/18/2012 17:10					4057. 0		RELEASED PRESSURE, 1/2 BBL CAME BACK TO DISPLACEMENT TANKS
Pressure Up	01/18/2012 17:12		0.5	0.5	25	4113. 0		PRESSURED UP ON CEMENT TO MAKE SURE SQUEEZE HELD
Release Casing Pressure	01/18/2012 17:15					4030. 0		RELEASED PRESSURE ON CASING TO 1500 THEN RIG OPENED UP THE BYPASS ON THE PACKER
Reverse Circ Well	01/18/2012 17:19							RIG REVERSE CIRCULATED WELL, CIRCULATED 1 BBL OUT OF TUBING
End Job	01/18/2012 17:26							THANK YOU FOR CHOOSING HALLIBURTON, THOMAS PONDER AND CREW

WILLIAMS RWF 434-8 SQUEEZE



Local Event Log			
Maximum	FSP	Maximum	FSP
11 START JOB	15:20:00 -4.296	2 FILL LINES	15:20:38 5.737
4 HIGH TEST LINES	15:23:19 5649	5 RE-PRIME PUMPS	15:35:28 533.8
7 RE-TEST LINES	15:43:47 5035	8 PUMP INJECTION RATE	15:52:17 1963
10 MIX CEMENT	16:00:09 843.2	11 PUMP CEMENT	16:07:34 852.6
13 HESITATE	17:01:05 3330	14 PUMP H2O DISPLACEMENT	17:07:13 4019
16 RELEASE PRESSURE	17:10:42 4052	17 PRESSURE UP	17:12:04 4113
19 RIG REVERSE CIRCULATE	17:19:12 11.64	20 END JOB	17:26:21 10.70
		3 LOW TEST LINES	15:23:12 5129
		6 RE-TEST LINES	15:39:18 5795
		9 SHUTDOWN/ISIP	15:58:42 1981
		12 PUMP H2O DISPLACEMENT	16:25:52 3765
		15 HESITATE	17:08:35 4098
		18 RELEASE PRESSURE	17:15:06 4030

Customer: WILLIAMS	Job Date: 18-Jan-2012	Sales Order #: 9189278
Well Description: RWF 434-8	Job Type: SQUEEZE	ADC Used: YES
Company Rep: BRIAN DUNNICK	Cement Supervisor: THOMAS PONDER	Elite #/Operator: ELITE #8 / STEPHEN BORSZICH

OptiCem v6.4.9
18-Jan-12 18:06

The Road to Excellence Starts with Safety

Sold To #: 300721	Ship To #: 2698665	Quote #:	Sales Order #: 9189278
Customer: WILLIAMS PRODUCTION RMT INC - EBUS		Customer Rep: Dunnick, Brian	
Well Name: RWF	Well #: 434-8	API/UWI #: 05-045-12813	
Field: Rulison	City (SAP): RIFLE	County/Parish: Garfield	State: Colorado
Lat: N 39.537 deg. OR N 39 deg. 32 min. 14.294 secs.		Long: W 107.905 deg. OR W -108 deg. 5 min. 43.508 secs.	
Contractor: WORKOVER		Rig/Platform Name/Num: WORKOVER	
Job Purpose: Squeeze Perfs			
Well Type: Development Well		Job Type: Squeeze Perfs	
Sales Person: MAYO, MARK		Srcv Supervisor: PONDER, THOMAS MBU ID Emp #: 427112	

Job Personnel

HES Emp Name	Exp Hrs	Emp #	HES Emp Name	Exp Hrs	Emp #	HES Emp Name	Exp Hrs	Emp #
BLANCHETTE, JAMES George	5	371360	BORSZICH, STEPHEN A	5	412388	MAGERS, MICHAEL Gerard	5	339439
PONDER, THOMAS Lynn	5	427112	SINCLAIR, DAN J	5	338784			

Equipment

HES Unit #	Distance-1 way	HES Unit #	Distance-1 way	HES Unit #	Distance-1 way	HES Unit #	Distance-1 way
10867304	60 mile	10871245	60 mile	10998054	60 mile	11259886	60 mile
11360881	60 mile						

Job Hours

Date	On Location Hours	Operating Hours	Date	On Location Hours	Operating Hours	Date	On Location Hours	Operating Hours
01/18/2012	5	3						

TOTAL Total is the sum of each column separately

Job

Job Times

Formation Name	Formation Depth (MD)	Top	Bottom	Called Out	Date	Time	Time Zone
Form Type	Job depth MD	6908. ft	Job Depth TVD	6908. ft	Job Started	18 - Jan - 2012 15:20	MST
Water Depth	Perforation Depth (MD)	From	To	Wk Ht Above Floor	4. ft	Job Completed	18 - Jan - 2012 17:26
Departed Loc	18 - Jan - 2012	18:30	MST				

Well Data

Description	New / Used	Max pressure psig	Size in	ID in	Weight lbm/ft	Thread	Grade	Top MD ft	Bottom MD ft	Top TVD ft	Bottom TVD ft

Tools and Accessories

Type	Size	Qty	Make	Depth	Type	Size	Qty	Make	Depth	Type	Size	Qty	Make
Guide Shoe					Packer	4 1/2	1		6583	Top Plug			
Float Shoe					Bridge Plug	4 1/2	1		7005	Bottom Plug			
Float Collar					Retainer					SSR plug set			
Insert Float										Plug Container			
Stage Tool										Centralizers			

Miscellaneous Materials

Gelling Agt	Conc	Surfactant	Conc	Acid Type	Qty	Conc	%
Treatment Fld	Conc	Inhibitor	Conc	Sand Type	Size	Qty	

Fluid Data

Stage/Plug #: 1											
Fluid #	Stage Type	Fluid Name	Qty	Qty uom	Mixing Density lbm/gal	Yield ft3/sk	Mix Fluid Gal/sk	Rate bbl/min	Total Mix Fluid Gal/sk		

Stage/Plug #: 1											
Fluid #	Stage Type	Fluid Name	Qty	Qty uom	Mixing Density lbm/gal	Yield ft3/sk	Mix Fluid Gal/sk	Rate bbl/min	Total Mix Fluid Gal/sk		

Stage/Plug #: 1									
1	Injection Test		10.00	bbl	8.33	.0	.0	2.0	
2	SqueezeCem Tail Cement	SQUEEZECEM (TM) SYSTEM (452971)	115.0	sacks	17.	.99	3.76	1	3.76
	3.76 Gal	FRESH WATER							
3	Displacement		26.00	bbl	8.33	.0	.0	1.0	
Calculated Values		Pressures		Volumes					
Displacement	25.5	Shut In: Instant	1440	Lost Returns		Cement Slurry	20.3	Pad	
Top Of Cement		5 Min		Cement Returns		Actual Displacement	25	Treatment	
Frac Gradient		15 Min		Spacers		Load and Breakdown		Total Job	56
Rates									
Circulating		Mixing	1	Displacement	1	Avg. Job			1
Cement Left In Pipe	Amount	0 ft	Reason	Shoe Joint					
Frac Ring # 1 @	ID	Frac ring # 2 @	ID	Frac Ring # 3 @	ID	Frac Ring # 4 @	ID		
The Information Stated Herein Is Correct				Customer Representative Signature					