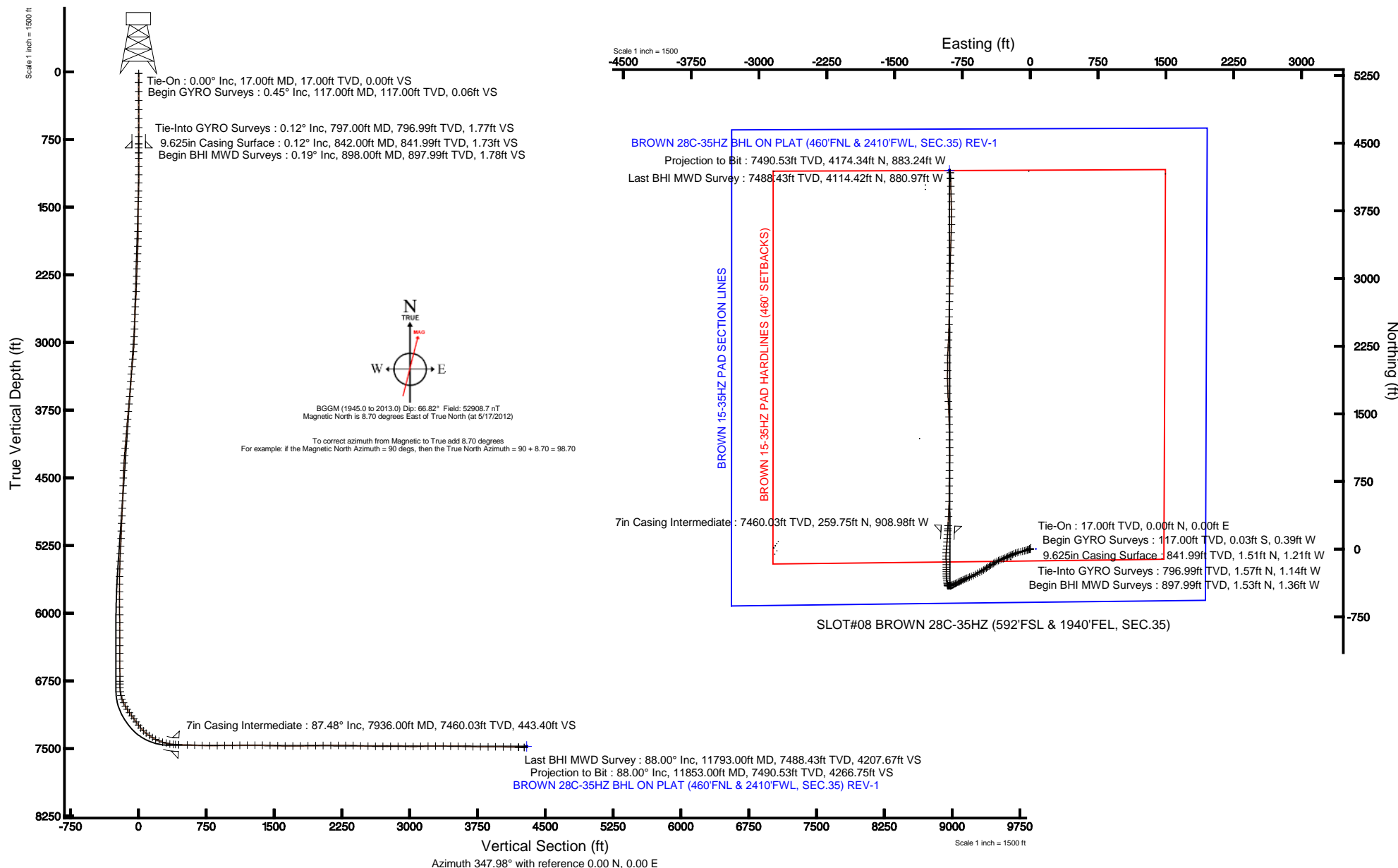


KERR-MCGEE OIL & GAS ONSHORE LP

Location: COLORADO Slot: SLOT#08 BROWN 28C-35HZ (592'FSL & 1940'FEL, SEC.35)
 Field: WELD COUNTY (KERR MCGEE) Well: BROWN 28C-35HZ
 Facility: SEC.35-T3N-R66W Wellbore: BROWN 28C-35HZ PWB

Plot reference wellpath is BROWN 28C-35HZ (REV-B.0) PWP	
True vertical depths are referenced to XTREME 8 (RKB)	Grid System: NAD83 / Lambert Colorado SP, Northern Zone (501), US feet
Measured depths are referenced to XTREME 8 (RKB)	North Reference: True north
XTREME 8 (RKB) to Mean Sea Level: 5071 feet	Scale: True distance
Mean Sea Level to Mud line (At Slot: SLOT#08 BROWN 28C-35HZ (592'FSL & 1940'FEL, SEC.35)): 0 feet	Depths are in feet
Coordinates are in feet referenced to Slot	Created by: willsjef02 on 5/29/2012





Actual Wellpath Report

BROWN 28C-35HZ AWP

Page 1 of 7



REFERENCE WELLPATH IDENTIFICATION

Operator	KERR-MCGEE OIL & GAS ONSHORE LP	Slot	SLOT#08 BROWN 28C-35HZ (592'FSL & 1940'FEL, SEC.35)
Area	COLORADO	Well	BROWN 28C-35HZ
Field	WELD COUNTY (KERR MCGEE)	Wellbore	BROWN 28C-35HZ AWB
Facility	SEC.35-T3N-R66W		

REPORT SETUP INFORMATION

Projection System	NAD83 / Lambert Colorado SP, Northern Zone (501), US feet	Software System	WellArchitect® 3.0.2
North Reference	True	User	Wilsjef02
Scale	0.999958	Report Generated	5/29/2012 at 11:13:12
Convergence at slot	0.49° East	Database/Source file	WellArchitectDB/BROWN_28C-35HZ_AWB.xml

WELLPATH LOCATION

	Local coordinates		Grid coordinates		Geographic coordinates	
	North[ft]	East[ft]	Easting[US ft]	Northing[US ft]	Latitude	Longitude
Slot Location	-1233.82	1274.57	3211822.28	1307935.42	40°10'34.295"N	104°44'30.980"W
Facility Reference Pt			3210537.33	1309158.32	40°10'46.488"N	104°44'47.400"W
Field Reference Pt			3197771.84	1268891.29	40°04'09.600"N	104°47'36.000"W

WELLPATH DATUM

Calculation method	Minimum curvature	XTREME 8 (RKB) to Facility Vertical Datum	5071.00ft
Horizontal Reference Pt	Slot	XTREME 8 (RKB) to Mean Sea Level	5071.00ft
Vertical Reference Pt	XTREME 8 (RKB)	XTREME 8 (RKB) to Mud Line at Slot (SLOT#08 BROWN 28C-35HZ (592'FSL & 1940'FEL, SEC.35))	5071.00ft
MD Reference Pt	XTREME 8 (RKB)	Section Origin	N 0.00, E 0.00 ft
Field Vertical Reference	Mean Sea Level	Section Azimuth	348.05°



Actual Wellpath Report

BROWN 28C-35HZ AWP

Page 2 of 7



REFERENCE WELLPATH IDENTIFICATION

Operator	KERR-MCGEE OIL & GAS ONSHORE LP	Slot	SLOT#08 BROWN 28C-35HZ (592'FSL & 1940'FEL, SEC.35)
Area	COLORADO	Well	BROWN 28C-35HZ
Field	WELD COUNTY (KERR MCGEE)	Wellbore	BROWN 28C-35HZ AWB
Facility	SEC.35-T3N-R66W		

WELLPATH DATA (155 stations) † = interpolated/extrapolated station

MD [ft]	Inclination [°]	Azimuth [°]	TVD [ft]	Vert Sect [ft]	North [ft]	East [ft]	Latitude	Longitude	DLS [°/100ft]	Comments
0.00†	0.000	266.270	0.00	0.00	0.00	0.00	40°10'34.295"N	104°44'30.980"W	0.00	
17.00	0.000	266.270	17.00	0.00	0.00	0.00	40°10'34.295"N	104°44'30.980"W	0.00	Tie-On
117.00	0.450	266.270	117.00	0.06	-0.03	-0.39	40°10'34.295"N	104°44'30.985"W	0.45	Begin GYRO Surveys
217.00	0.230	298.950	217.00	0.24	0.05	-0.96	40°10'34.295"N	104°44'30.992"W	0.28	
317.00	0.200	344.900	317.00	0.55	0.31	-1.18	40°10'34.298"N	104°44'30.995"W	0.17	
417.00	0.200	51.780	417.00	0.80	0.59	-1.09	40°10'34.301"N	104°44'30.994"W	0.22	
517.00	0.240	59.850	517.00	0.94	0.80	-0.77	40°10'34.303"N	104°44'30.990"W	0.05	
617.00	0.270	341.900	616.99	1.24	1.13	-0.66	40°10'34.306"N	104°44'30.989"W	0.32	
717.00	0.290	308.170	716.99	1.67	1.51	-0.93	40°10'34.310"N	104°44'30.992"W	0.16	
797.00	0.120	212.660	796.99	1.77	1.57	-1.14	40°10'34.310"N	104°44'30.995"W	0.41	Tie-Into GYRO Surveys
898.00	0.190	287.710	897.99	1.77	1.53	-1.36	40°10'34.310"N	104°44'30.997"W	0.19	Begin BHI MWD Surveys
958.00	0.250	284.550	957.99	1.88	1.59	-1.58	40°10'34.311"N	104°44'31.000"W	0.10	
1049.00	1.390	241.850	1048.98	1.66	1.12	-2.74	40°10'34.306"N	104°44'31.015"W	1.34	
1140.00	3.250	252.170	1139.90	1.09	-0.19	-6.17	40°10'34.293"N	104°44'31.060"W	2.09	
1231.00	4.820	245.730	1230.68	0.01	-2.55	-12.11	40°10'34.270"N	104°44'31.136"W	1.79	
1322.00	6.620	247.890	1321.22	-1.73	-6.10	-20.46	40°10'34.235"N	104°44'31.244"W	1.99	
1395.00	8.070	246.930	1393.62	-3.46	-9.69	-29.07	40°10'34.199"N	104°44'31.355"W	1.99	
1437.00	8.670	245.960	1435.17	-4.69	-12.14	-34.68	40°10'34.175"N	104°44'31.427"W	1.47	
1523.00	10.320	254.670	1519.99	-6.51	-16.81	-48.03	40°10'34.129"N	104°44'31.599"W	2.54	
1608.00	12.130	259.180	1603.37	-6.78	-20.50	-64.14	40°10'34.092"N	104°44'31.806"W	2.37	
1693.00	14.540	257.720	1686.07	-6.67	-24.45	-83.34	40°10'34.053"N	104°44'32.054"W	2.86	
1779.00	15.040	258.260	1769.22	-6.69	-29.02	-104.82	40°10'34.008"N	104°44'32.330"W	0.60	
1864.00	13.970	254.190	1851.51	-7.34	-34.06	-125.49	40°10'33.958"N	104°44'32.597"W	1.74	
1949.00	13.310	250.690	1934.11	-9.29	-40.09	-144.59	40°10'33.899"N	104°44'32.843"W	1.24	
2034.00	13.240	250.650	2016.84	-11.79	-46.55	-163.01	40°10'33.835"N	104°44'33.080"W	0.08	
2119.00	12.510	247.340	2099.71	-14.76	-53.32	-180.69	40°10'33.768"N	104°44'33.308"W	1.22	
2204.00	10.860	244.460	2182.94	-18.35	-60.32	-196.41	40°10'33.699"N	104°44'33.510"W	2.06	
2289.00	9.110	245.470	2266.65	-21.70	-66.56	-209.76	40°10'33.637"N	104°44'33.682"W	2.07	
2375.00	9.390	248.200	2351.53	-24.39	-72.00	-222.47	40°10'33.584"N	104°44'33.846"W	0.61	
2460.00	10.410	244.810	2435.27	-27.33	-77.84	-235.86	40°10'33.526"N	104°44'34.018"W	1.38	
2546.00	11.700	242.850	2519.67	-31.40	-85.13	-250.65	40°10'33.454"N	104°44'34.209"W	1.56	
2631.00	12.390	244.010	2602.80	-35.87	-93.06	-266.51	40°10'33.375"N	104°44'34.413"W	0.86	
2716.00	12.720	246.680	2685.77	-39.93	-100.76	-283.30	40°10'33.299"N	104°44'34.630"W	0.79	
2801.00	12.280	248.120	2768.75	-43.33	-107.83	-300.28	40°10'33.229"N	104°44'34.848"W	0.63	
2886.00	11.580	251.870	2851.92	-45.81	-113.85	-316.78	40°10'33.170"N	104°44'35.061"W	1.23	
2972.00	12.240	247.370	2936.07	-48.43	-120.05	-333.40	40°10'33.109"N	104°44'35.275"W	1.32	
3057.00	13.450	244.110	3018.94	-52.48	-127.83	-350.61	40°10'33.032"N	104°44'35.497"W	1.66	
3142.00	14.460	243.950	3101.43	-57.45	-136.81	-369.04	40°10'32.943"N	104°44'35.734"W	1.19	
3228.00	15.150	237.440	3184.58	-64.03	-147.57	-388.16	40°10'32.837"N	104°44'35.981"W	2.09	
3313.00	13.540	230.410	3266.93	-72.55	-159.89	-405.19	40°10'32.715"N	104°44'36.200"W	2.79	
3399.00	13.130	239.540	3350.62	-80.33	-171.26	-421.37	40°10'32.603"N	104°44'36.408"W	2.49	
3484.00	12.860	242.340	3433.45	-85.95	-180.55	-438.07	40°10'32.511"N	104°44'36.624"W	0.81	
3570.00	12.270	235.370	3517.39	-92.07	-190.18	-454.07	40°10'32.416"N	104°44'36.830"W	1.89	
3655.00	12.280	235.870	3600.45	-98.97	-200.39	-468.98	40°10'32.315"N	104°44'37.022"W	0.13	
3740.00	13.710	232.930	3683.27	-106.66	-211.53	-484.50	40°10'32.205"N	104°44'37.222"W	1.85	



Actual Wellpath Report

BROWN 28C-35HZ AWP

Page 3 of 7



REFERENCE WELLPATH IDENTIFICATION			
Operator	KERR-MCGEE OIL & GAS ONSHORE LP	Slot	SLOT#08 BROWN 28C-35HZ (592'FSL & 1940'FEL, SEC.35)
Area	COLORADO	Well	BROWN 28C-35HZ
Field	WELD COUNTY (KERR MCGEE)	Wellbore	BROWN 28C-35HZ AWB
Facility	SEC.35-T3N-R66W		

WELLPATH DATA (155 stations)										
MD [ft]	Inclination [°]	Azimuth [°]	TVD [ft]	Vert Sect [ft]	North [ft]	East [ft]	Latitude	Longitude	DLS [°/100ft]	Comments
3825.00	13.130	234.690	3765.95	-114.76	-223.18	-500.42	40°10'32.089"N	104°44'37.427"W	0.83	
3911.00	14.240	239.660	3849.51	-121.97	-234.17	-517.52	40°10'31.981"N	104°44'37.647"W	1.88	
3996.00	16.230	241.060	3931.52	-128.74	-245.20	-536.94	40°10'31.872"N	104°44'37.897"W	2.38	
4081.00	18.430	243.170	4012.66	-135.67	-257.02	-559.32	40°10'31.755"N	104°44'38.186"W	2.69	
4166.00	18.300	242.780	4093.33	-142.63	-269.19	-583.18	40°10'31.635"N	104°44'38.493"W	0.21	
4251.00	17.880	243.190	4174.13	-149.50	-281.18	-606.69	40°10'31.516"N	104°44'38.796"W	0.52	
4336.00	17.590	243.060	4255.09	-156.17	-292.88	-629.79	40°10'31.401"N	104°44'39.093"W	0.34	
4422.00	15.070	245.090	4337.61	-162.04	-303.48	-651.52	40°10'31.296"N	104°44'39.373"W	3.00	
4507.00	12.740	247.110	4420.11	-166.30	-311.78	-670.18	40°10'31.214"N	104°44'39.614"W	2.80	
4592.00	10.560	249.360	4503.36	-169.25	-318.17	-686.10	40°10'31.151"N	104°44'39.819"W	2.62	
4677.00	10.700	249.950	4586.90	-171.54	-323.62	-700.80	40°10'31.097"N	104°44'40.008"W	0.21	
4763.00	10.650	248.380	4671.41	-174.00	-329.29	-715.69	40°10'31.041"N	104°44'40.200"W	0.34	
4848.00	10.100	244.120	4755.02	-177.12	-335.43	-729.70	40°10'30.980"N	104°44'40.380"W	1.11	
4933.00	10.930	241.760	4838.60	-181.17	-342.50	-743.50	40°10'30.910"N	104°44'40.558"W	1.10	
5019.00	10.780	242.170	4923.06	-185.66	-350.11	-757.80	40°10'30.835"N	104°44'40.742"W	0.20	
5104.00	9.790	244.360	5006.69	-189.55	-356.95	-771.34	40°10'30.767"N	104°44'40.917"W	1.25	
5189.00	9.550	249.190	5090.48	-192.35	-362.58	-784.45	40°10'30.712"N	104°44'41.086"W	1.00	
5274.00	11.370	244.430	5174.07	-195.41	-368.71	-798.60	40°10'30.651"N	104°44'41.268"W	2.37	
5360.00	11.280	242.790	5258.40	-199.62	-376.21	-813.73	40°10'30.577"N	104°44'41.463"W	0.39	
5445.00	10.210	244.110	5341.90	-203.62	-383.30	-827.90	40°10'30.507"N	104°44'41.646"W	1.29	
5530.00	9.130	244.710	5425.69	-206.99	-389.47	-840.77	40°10'30.446"N	104°44'41.811"W	1.28	
5616.00	7.960	247.080	5510.74	-209.70	-394.71	-852.43	40°10'30.394"N	104°44'41.962"W	1.42	
5701.00	7.260	249.240	5594.99	-211.64	-398.90	-862.87	40°10'30.353"N	104°44'42.096"W	0.89	
5786.00	6.310	254.570	5679.39	-212.75	-402.05	-872.40	40°10'30.322"N	104°44'42.219"W	1.34	
5872.00	5.210	260.610	5764.96	-212.86	-403.94	-880.81	40°10'30.303"N	104°44'42.327"W	1.46	
5957.00	4.420	261.750	5849.66	-212.48	-405.04	-887.85	40°10'30.292"N	104°44'42.418"W	0.94	
6042.00	3.570	264.010	5934.45	-211.99	-405.79	-893.73	40°10'30.285"N	104°44'42.494"W	1.02	
6128.00	2.830	272.550	6020.32	-211.18	-405.97	-898.51	40°10'30.283"N	104°44'42.555"W	1.02	
6213.00	2.330	262.230	6105.23	-210.53	-406.11	-902.32	40°10'30.282"N	104°44'42.604"W	0.80	
6299.00	2.530	253.390	6191.15	-210.56	-406.89	-905.87	40°10'30.274"N	104°44'42.650"W	0.49	
6384.00	1.460	279.180	6276.10	-210.32	-407.26	-908.74	40°10'30.270"N	104°44'42.687"W	1.61	
6469.00	1.390	275.920	6361.08	-209.62	-406.98	-910.83	40°10'30.273"N	104°44'42.714"W	0.13	
6554.00	0.030	66.440	6446.07	-209.29	-406.86	-911.84	40°10'30.274"N	104°44'42.727"W	1.67	
6640.00	0.250	9.650	6532.07	-209.12	-406.67	-911.79	40°10'30.276"N	104°44'42.726"W	0.27	
6725.00	0.320	322.580	6617.07	-208.73	-406.30	-911.90	40°10'30.280"N	104°44'42.728"W	0.28	
6810.00	0.720	288.680	6702.06	-208.24	-405.94	-912.55	40°10'30.283"N	104°44'42.736"W	0.57	
6865.00	1.090	279.770	6757.06	-207.87	-405.74	-913.39	40°10'30.285"N	104°44'42.747"W	0.72	
6896.00	1.140	274.430	6788.05	-207.68	-405.66	-913.99	40°10'30.286"N	104°44'42.755"W	0.37	
6939.00	1.950	328.830	6831.04	-206.87	-405.00	-914.80	40°10'30.293"N	104°44'42.765"W	3.69	
6981.00	6.920	349.790	6872.90	-203.66	-401.90	-915.61	40°10'30.323"N	104°44'42.775"W	12.25	
7024.00	13.360	352.450	6915.21	-196.11	-394.42	-916.73	40°10'30.397"N	104°44'42.790"W	15.01	
7067.00	19.120	351.790	6956.47	-184.12	-382.51	-918.39	40°10'30.515"N	104°44'42.811"W	13.40	
7109.00	25.510	351.680	6995.31	-168.21	-366.74	-920.68	40°10'30.671"N	104°44'42.841"W	15.21	
7152.00	30.610	352.790	7033.24	-148.05	-346.70	-923.40	40°10'30.869"N	104°44'42.876"W	11.92	
7194.00	33.040	354.420	7068.93	-126.01	-324.70	-925.85	40°10'31.086"N	104°44'42.907"W	6.14	



Actual Wellpath Report

BROWN 28C-35HZ AWP

Page 4 of 7



REFERENCE WELLPATH IDENTIFICATION

Operator	KERR-MCGEE OIL & GAS ONSHORE LP	Slot	SLOT#08 BROWN 28C-35HZ (592'FSL & 1940'FEL, SEC.35)
Area	COLORADO	Well	BROWN 28C-35HZ
Field	WELD COUNTY (KERR MCGEE)	Wellbore	BROWN 28C-35HZ AWB
Facility	SEC.35-T3N-R66W		

WELLPATH DATA (155 stations) † = interpolated/extrapolated station

MD [ft]	Inclination [°]	Azimuth [°]	TVD [ft]	Vert Sect [ft]	North [ft]	East [ft]	Latitude	Longitude	DLS [°/100ft]	Comments
7237.00	35.250	354.350	7104.51	-102.02	-300.68	-928.21	40°10'31.324"N	104°44'42.938"W	5.14	
7280.00	36.500	1.150	7139.37	-77.22	-275.53	-929.18	40°10'31.572"N	104°44'42.950"W	9.71	
7322.00	36.470	1.870	7173.14	-52.93	-250.57	-928.52	40°10'31.819"N	104°44'42.942"W	1.02	
7365.00	35.970	1.360	7207.83	-28.23	-225.17	-927.80	40°10'32.070"N	104°44'42.933"W	1.36	
7408.00	36.300	0.580	7242.55	-3.52	-199.82	-927.38	40°10'32.320"N	104°44'42.927"W	1.32	
7450.00	40.900	359.540	7275.37	22.11	-173.62	-927.36	40°10'32.579"N	104°44'42.927"W	11.06	
7493.00	46.200	356.880	7306.53	51.26	-144.03	-928.32	40°10'32.872"N	104°44'42.939"W	13.04	
7535.00	52.560	356.910	7333.86	82.74	-112.21	-930.04	40°10'33.186"N	104°44'42.962"W	15.14	
7578.00	56.820	0.620	7358.71	117.20	-77.15	-930.77	40°10'33.532"N	104°44'42.971"W	12.15	
7621.00	59.080	3.440	7381.53	152.55	-40.73	-929.47	40°10'33.892"N	104°44'42.954"W	7.65	
7663.00	63.510	4.400	7401.70	187.98	-3.99	-926.94	40°10'34.255"N	104°44'42.922"W	10.74	
7706.00	69.200	4.400	7418.94	225.76	35.27	-923.92	40°10'34.643"N	104°44'42.883"W	13.23	
7749.00	73.010	4.700	7432.86	264.76	75.81	-920.70	40°10'35.044"N	104°44'42.841"W	8.89	
7791.00	76.600	4.190	7443.87	303.64	116.22	-917.56	40°10'35.443"N	104°44'42.801"W	8.63	
7834.00	80.640	3.470	7452.35	344.20	158.27	-914.74	40°10'35.859"N	104°44'42.765"W	9.54	
7877.00	86.810	3.000	7457.05	385.43	200.92	-912.33	40°10'36.280"N	104°44'42.734"W	14.39	
7900.00	86.980	3.410	7458.29	407.60	223.85	-911.05	40°10'36.507"N	104°44'42.717"W	1.93	
7936.00†	87.481	3.194	7460.03	442.29	259.75	-908.98	40°10'36.862"N	104°44'42.690"W	1.52	7" Casing Point
8035.00	88.860	2.600	7463.19	537.93	358.57	-903.98	40°10'37.838"N	104°44'42.626"W	1.52	
8120.00	87.320	2.560	7466.03	620.17	443.44	-900.15	40°10'38.677"N	104°44'42.577"W	1.81	
8205.00	88.740	1.660	7468.95	702.57	528.32	-897.03	40°10'39.516"N	104°44'42.536"W	1.98	
8291.00	89.480	359.480	7470.28	786.51	614.30	-896.17	40°10'40.365"N	104°44'42.525"W	2.68	
8376.00	91.230	1.230	7469.76	869.55	699.29	-895.64	40°10'41.205"N	104°44'42.519"W	2.91	
8461.00	90.550	0.260	7468.44	952.46	784.28	-894.54	40°10'42.045"N	104°44'42.505"W	1.39	
8547.00	90.430	0.930	7467.70	1036.41	870.27	-893.65	40°10'42.895"N	104°44'42.493"W	0.79	
8632.00	90.700	0.680	7466.86	1119.31	955.25	-892.45	40°10'43.735"N	104°44'42.478"W	0.43	
8717.00	90.210	0.140	7466.19	1202.33	1040.25	-891.84	40°10'44.575"N	104°44'42.470"W	0.86	
8802.00	89.750	359.040	7466.22	1285.61	1125.25	-892.45	40°10'45.415"N	104°44'42.478"W	1.40	
8888.00	89.350	359.730	7466.89	1369.93	1211.24	-893.38	40°10'46.264"N	104°44'42.490"W	0.93	
8973.00	88.460	359.320	7468.52	1453.22	1296.22	-894.08	40°10'47.104"N	104°44'42.499"W	1.15	
9059.00	87.930	357.950	7471.23	1537.71	1382.15	-896.13	40°10'47.953"N	104°44'42.525"W	1.71	
9144.00	88.620	358.060	7473.78	1621.40	1467.06	-899.08	40°10'48.792"N	104°44'42.563"W	0.82	
9229.00	90.580	357.740	7474.38	1705.14	1551.99	-902.20	40°10'49.632"N	104°44'42.604"W	2.34	
9314.00	90.950	357.210	7473.24	1788.98	1636.90	-905.94	40°10'50.471"N	104°44'42.652"W	0.76	
9400.00	91.230	357.460	7471.61	1873.84	1722.79	-909.94	40°10'51.320"N	104°44'42.703"W	0.44	
9485.00	90.950	358.660	7469.99	1957.53	1807.73	-912.82	40°10'52.159"N	104°44'42.741"W	1.45	
9571.00	90.150	358.410	7469.16	2042.09	1893.70	-915.02	40°10'53.008"N	104°44'42.769"W	0.97	
9656.00	90.580	2.350	7468.62	2125.11	1978.68	-914.45	40°10'53.848"N	104°44'42.762"W	4.66	
9741.00	89.850	358.000	7468.30	2208.20	2063.65	-914.19	40°10'54.688"N	104°44'42.758"W	5.19	
9826.00	90.060	2.910	7468.37	2291.19	2148.63	-913.52	40°10'55.528"N	104°44'42.750"W	5.78	
9912.00	88.060	3.640	7469.78	2374.16	2234.47	-908.61	40°10'56.376"N	104°44'42.686"W	2.48	
9997.00	87.480	3.140	7473.09	2456.07	2319.25	-903.58	40°10'57.214"N	104°44'42.622"W	0.90	
10082.00	88.620	0.780	7475.98	2538.52	2404.15	-900.68	40°10'58.053"N	104°44'42.584"W	3.08	
10167.00	88.950	1.640	7477.78	2621.27	2489.11	-898.89	40°10'58.892"N	104°44'42.561"W	1.08	
10252.00	89.130	0.860	7479.21	2704.01	2574.08	-897.03	40°10'59.732"N	104°44'42.537"W	0.94	



Actual Wellpath Report

BROWN 28C-35HZ AWP

Page 5 of 7



REFERENCE WELLPATH IDENTIFICATION			
Operator	KERR-MCGEE OIL & GAS ONSHORE LP	Slot	SLOT#08 BROWN 28C-35HZ (592'FSL & 1940'FEL, SEC.35)
Area	COLORADO	Well	BROWN 28C-35HZ
Field	WELD COUNTY (KERR MCGEE)	Wellbore	BROWN 28C-35HZ AWB
Facility	SEC.35-T3N-R66W		

WELLPATH DATA (155 stations)										
MD [ft]	Inclination [°]	Azimuth [°]	TVD [ft]	Vert Sect [ft]	North [ft]	East [ft]	Latitude	Longitude	DLS [°/100ft]	Comments
10338.00	90.740	1.000	7479.31	2787.85	2660.06	-895.64	40°11'00.582"N	104°44'42.520"W	1.88	
10423.00	90.000	0.720	7478.76	2870.73	2745.05	-894.36	40°11'01.421"N	104°44'42.503"W	0.93	
10508.00	89.230	2.220	7479.33	2953.40	2830.02	-892.18	40°11'02.261"N	104°44'42.475"W	1.98	
10594.00	89.880	0.890	7480.00	3037.02	2915.98	-889.85	40°11'03.111"N	104°44'42.445"W	1.72	
10679.00	91.820	1.060	7478.73	3119.86	3000.95	-888.40	40°11'03.950"N	104°44'42.426"W	2.29	
10764.00	90.860	1.310	7476.75	3202.61	3085.91	-886.64	40°11'04.790"N	104°44'42.404"W	1.17	
10849.00	90.370	1.430	7475.83	3285.32	3170.88	-884.61	40°11'05.630"N	104°44'42.378"W	0.59	
10935.00	89.440	1.600	7475.98	3368.96	3256.85	-882.34	40°11'06.479"N	104°44'42.348"W	1.10	
11020.00	88.980	1.900	7477.15	3451.53	3341.80	-879.74	40°11'07.319"N	104°44'42.315"W	0.65	
11105.00	89.230	1.740	7478.48	3534.08	3426.75	-877.04	40°11'08.158"N	104°44'42.280"W	0.35	
11190.00	88.770	2.080	7479.96	3616.59	3511.69	-874.21	40°11'08.997"N	104°44'42.244"W	0.67	
11276.00	88.830	1.080	7481.76	3700.19	3597.64	-871.84	40°11'09.847"N	104°44'42.213"W	1.16	
11361.00	88.730	0.250	7483.57	3783.12	3682.61	-870.85	40°11'10.686"N	104°44'42.201"W	0.98	
11446.00	90.210	359.030	7484.36	3866.38	3767.60	-871.39	40°11'11.526"N	104°44'42.208"W	2.26	
11532.00	90.120	358.590	7484.11	3950.86	3853.58	-873.17	40°11'12.376"N	104°44'42.231"W	0.52	
11617.00	89.350	358.030	7484.50	4034.50	3938.54	-875.68	40°11'13.216"N	104°44'42.263"W	1.12	
11702.00	88.770	358.530	7485.90	4118.14	4023.49	-878.23	40°11'14.055"N	104°44'42.296"W	0.90	
11787.00	88.090	358.070	7488.23	4201.75	4108.42	-880.75	40°11'14.894"N	104°44'42.328"W	0.97	
11793.00	88.000	357.830	7488.43	4207.66	4114.42	-880.97	40°11'14.954"N	104°44'42.331"W	4.27	Last BHI MWD Survey
11853.00	88.000	357.830	7490.53	4266.75	4174.34	-883.24	40°11'15.546"N	104°44'42.360"W	0.00	Projection to Bit

HOLE & CASING SECTIONS - Ref Wellbore: BROWN 28C-35HZ AWB Ref Wellpath: BROWN 28C-35HZ AWP									
String/Diameter	Start MD [ft]	End MD [ft]	Interval [ft]	Start TVD [ft]	End TVD [ft]	Start N/S [ft]	Start E/W [ft]	End N/S [ft]	End E/W [ft]
13.5in Open Hole	17.00	842.00	825.00	17.00	841.99	0.00	0.00	1.51	-1.21
9.625in Casing Surface	17.00	842.00	825.00	17.00	841.99	0.00	0.00	1.51	-1.21
8.75in Open Hole	842.00	7946.00	7104.00	841.99	7460.46	1.51	-1.21	269.73	-908.43
7in Casing Intermediate	17.00	7936.00	7919.00	17.00	7460.03	0.00	0.00	259.75	-908.98
6.125in Open Hole	7936.00	11853.00	3917.00	7460.03	7490.53	259.75	-908.98	4174.34	-883.24



Actual Wellpath Report

BROWN 28C-35HZ AWP

Page 6 of 7



REFERENCE WELLPATH IDENTIFICATION			
Operator	KERR-MCGEE OIL & GAS ONSHORE LP	Slot	SLOT#08 BROWN 28C-35HZ (592'FSL & 1940'FEL, SEC.35)
Area	COLORADO	Well	BROWN 28C-35HZ
Field	WELD COUNTY (KERR MCGEE)	Wellbore	BROWN 28C-35HZ AWB
Facility	SEC.35-T3N-R66W		

TARGETS									
Name	MD [ft]	TVD [ft]	North [ft]	East [ft]	Grid East [US ft]	Grid North [US ft]	Latitude	Longitude	Shape
BROWN 15-35HZ PAD SECTION LINES		0.00	0.71	60.08	3211882.34	1307936.64	40°10'34.302"N	104°44'30.206"W	polygon
BROWN 28C-35HZ BHL ON PLAT (460'FNL & 2410'FWL, SEC.35) REV-1		7479.00	4199.26	-894.37	3210892.08	1312126.70	40°11'15.792"N	104°44'42.504"W	point
BROWN 15-35HZ PAD HARDLINES (460' SETBACKS)		7520.00	0.71	60.08	3211882.34	1307936.64	40°10'34.302"N	104°44'30.206"W	polygon

WELLPATH COMPOSITION - Ref Wellbore: BROWN 28C-35HZ AWB					Ref Wellpath: BROWN 28C-35HZ AWP	
Start MD [ft]	End MD [ft]	Positional Uncertainty Model	Log Name/Comment		Wellbore	
17.00	797.00	Gyrodatta standard - Continuous gyro	GYRODATA SURVEYS <117-797>		BROWN 28C-35HZ AWB	
797.00	7900.00	NaviTrak (Standard)	BHI MWD SURVEYS 8 3/4" HOLE <898-7900>		BROWN 28C-35HZ AWB	
7900.00	11793.00	OnTrak (Standard)	BHI MWD SURVEYS 6 1/8" HOLE <8035-11793>		BROWN 28C-35HZ AWB	
11793.00	11853.00	Blind Drilling (std)	Projection to bit		BROWN 28C-35HZ AWB	



Actual Wellpath Report

BROWN 28C-35HZ AWP

Page 7 of 7



REFERENCE WELLPATH IDENTIFICATION			
Operator	KERR-MCGEE OIL & GAS ONSHORE LP	Slot	SLOT#08 BROWN 28C-35HZ (592'FSL & 1940'FEL, SEC.35)
Area	COLORADO	Well	BROWN 28C-35HZ
Field	WELD COUNTY (KERR MCGEE)	Wellbore	BROWN 28C-35HZ AWB
Facility	SEC.35-T3N-R66W		

WELLPATH COMMENTS				
MD [ft]	Inclination [°]	Azimuth [°]	TVD [ft]	Comment
17.00	0.000	266.270	17.00	Tie-On
117.00	0.450	266.270	117.00	Begin GYRO Surveys
797.00	0.120	212.660	796.99	Tie-Into GYRO Surveys
898.00	0.190	287.710	897.99	Begin BHI MWD Surveys
7936.00	87.481	3.194	7460.03	7" Casing Point
11793.00	88.000	357.830	7488.43	Last BHI MWD Survey
11853.00	88.000	357.830	7490.53	Projection to Bit