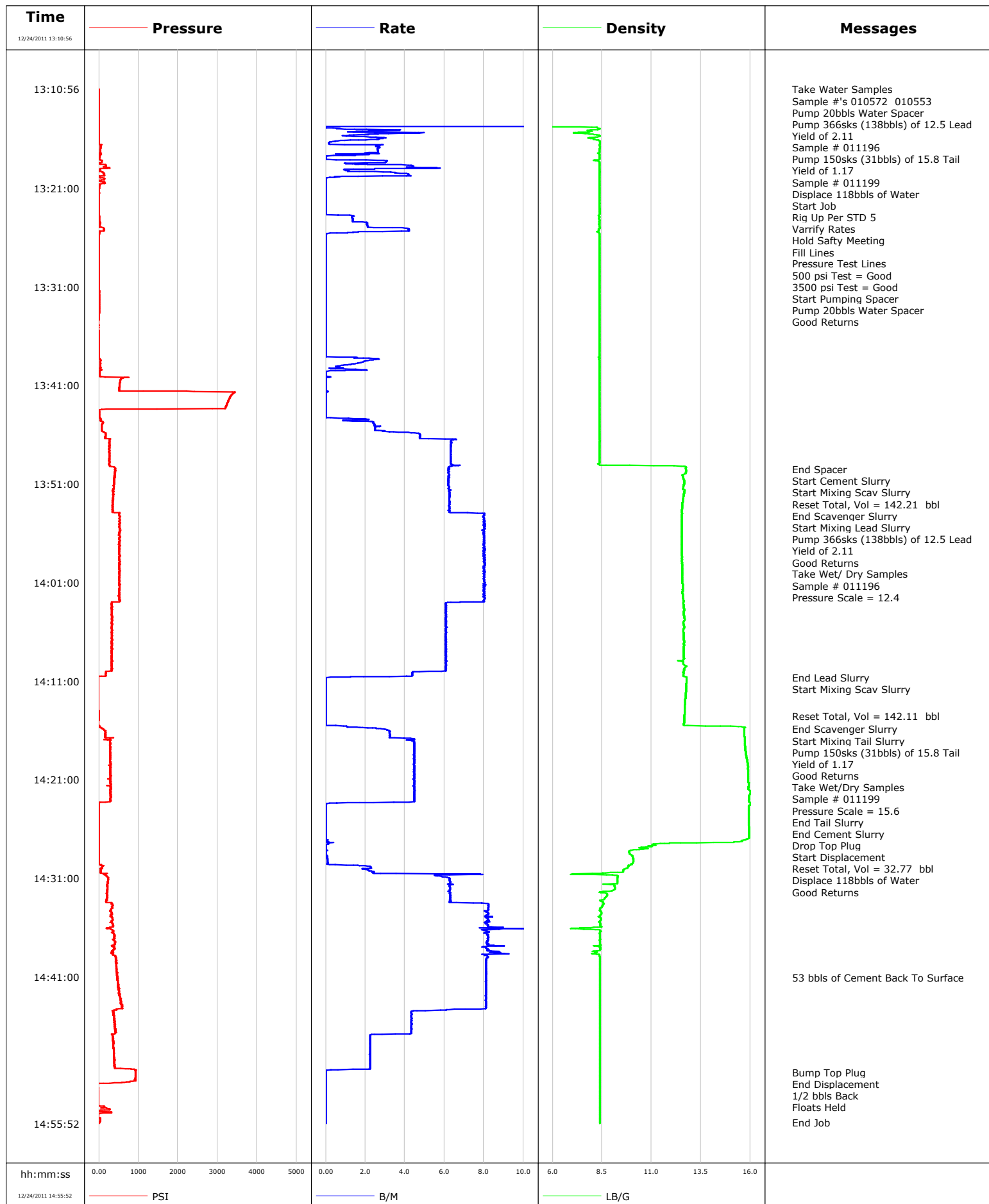


|                 |                       |                 |               |
|-----------------|-----------------------|-----------------|---------------|
| <b>Well</b>     | HMU FEDERAL 16-16C    | <b>Client</b>   | EnCana        |
| <b>Field</b>    | Mamm Creek            | <b>SIR No.</b>  | 682777        |
| <b>Engineer</b> | Dant Ryan/ Ted Hansen | <b>Job Type</b> | 9 5/8 Surface |
| <b>Country</b>  | United States         | <b>Job Date</b> | 12-24-2011    |



# Cementing Service Report

|   |                  |  |               |                                     |            |                           |                          |                                |  |
|---|------------------|--|---------------|-------------------------------------|------------|---------------------------|--------------------------|--------------------------------|--|
|   |                  |  |               | Customer<br>EnCana                  |            |                           | Job Number<br>682777     |                                |  |
| Well<br>HMU FEDERAL 16-16C HMU FEDERAL 16-16C             |                  |  |               | Location (legal)<br>J16W            |            |                           | Schlumberger Location    |                                |  |
|   |                  |  |               |                                     |            |                           | Job Start<br>Dec/24/2011 |                                |  |
| Field<br>Mamm Creek                                       |                  | Formation Name/Type<br>Shale   |               | Deviation<br>0 deg                  |            | Bit Size<br>12.3 in       |                          | Well MD<br>1565.0 ft           |  |
| County<br>Garfield  |                  | State/Province<br>Colorado   |               | BHP<br>psi                          |            | BHST<br>100 degF          |                          | BHCT<br>86 degF                |  |
| Well Master<br>0631254652                                 |                  | API/UWI<br>05045204030000  |               |                                     |            |                           |                          | Pore Press. Gradient<br>lb/gal |  |
| Rig Name<br>NABORS M-11                                   |                  | Drilled For<br>Gas   |               | Service Via<br>Inland Waters        |            | Casing/Liner              |                          |                                |  |
|   |                  |  |               |                                     |            | Depth, ft                 |                          | Size, in                       |  |
|   |                  |  |               |                                     |            | Weight, lb/ft             |                          | Grade                          |  |
|   |                  |  |               |                                     |            | Thread                    |                          |                                |  |
| Offshore Zone   |                  | Well Class<br>New  |               | Well Type<br>Development            |            | 40.0                      |                          | 16.0                           |  |
|   |                  |  |               |                                     |            | 1565.0                    |                          | 9.6                            |  |
|   |                  |  |               |                                     |            | 65.0                      |                          | N/A                            |  |
|   |                  |  |               |                                     |            | 36.0                      |                          | K55                            |  |
|   |                  |  |               |                                     |            | 8RD                       |                          |                                |  |
| Drilling Fluid Type<br>Bentonite                          |                  | Max. Density<br>9.50 lb/gal  |               | Plastic Viscosity<br>12.000 cP      |            | Tubing/Drill Pipe         |                          |                                |  |
|   |                  |  |               |                                     |            | T/D                       |                          | Depth, ft                      |  |
|   |                  |  |               |                                     |            | Size, in                  |                          | Weight, lb/ft                  |  |
|   |                  |  |               |                                     |            | Grade                     |                          | Thread                         |  |
| Service Line<br>Cementing                                 |                  | Job Type<br>9 5/8 Surface  |               |                                     |            | 0.0                       |                          | 0.0                            |  |
|   |                  |  |               |                                     |            | 0.0                       |                          | 0.0                            |  |
| Max. Allowed Tub. Press<br>3000 psi                       |                  | Max. Allowed Ann. Press<br>500 psi   |               | WH Connection<br>Single Cement head |            | Perforations/Open Hole    |                          |                                |  |
|   |                  |  |               |                                     |            | Top, ft                   |                          | Bottom, ft                     |  |
|   |                  |  |               |                                     |            | shot/ft                   |                          | No. of Shots                   |  |
|   |                  |  |               |                                     |            | Total Interval<br>ft      |                          |                                |  |
|   |                  |  |               |                                     |            | ft                        |                          | ft                             |  |
|   |                  |  |               |                                     |            | ft                        |                          | ft                             |  |
|   |                  |  |               |                                     |            | ft                        |                          | ft                             |  |
|   |                  |  |               |                                     |            | Treat Down<br>Casing      |                          | Displacement<br>118.0 bbl      |  |
|   |                  |  |               |                                     |            | Packer Type               |                          | Packer Depth<br>ft             |  |
|   |                  |  |               |                                     |            | Tubing Vol.<br>bbl        |                          | Casing Vol.<br>122.0 bbl       |  |
|   |                  |  |               |                                     |            | Annular Vol.<br>91.0 bbl  |                          | Openhole Vol.<br>215.0 bbl     |  |
| Casing/Tubing Secured <input checked="" type="checkbox"/> |                  | 1 Hole Vol. Circulated prior to Cement <input checked="" type="checkbox"/> |               | Casing Tools                        |            | Squeeze Job               |                          |                                |  |
| Lift Pressure<br>777 psi                                  |                  |  |               | Shoe Type<br>Float                  |            | Squeeze Type              |                          |                                |  |
| Pipe Rotated <input type="checkbox"/>                     |                  | Pipe Reciprocated <input type="checkbox"/>                                 |               | Shoe Depth<br>1565.0 ft             |            | Tool Type                 |                          |                                |  |
| No. Centralizers  |                  | Top Plugs<br>1   |               | Bottom Plugs                        |            | Stage Tool Type           |                          | Tool Depth<br>ft               |  |
| Cement Head Type<br>Single                                |                  |  |               |                                     |            | Stage Tool Depth<br>ft    |                          | Tail Pipe Size<br>in           |  |
| Job Scheduled For<br>Dec/24/2011 09:00                    |                  | Arrived on Location<br>Dec/24/2011 09:00                                   |               | Leave Location<br>Dec/24/2011       |            | Collar Type<br>Float      |                          | Tail Pipe Depth<br>ft          |  |
|   |                  |  |               |                                     |            | Collar Depth<br>1520.0 ft |                          | Sqz. Total Vol.<br>bbl         |  |
| Date  | Time 24-hr clock | Treating Pressure PSI  | Flow Rate B/M | Density LB/G                        | Volume BBL | Message                   |                          |                                |  |
| 12/24/2011  | 13:10:56         | -0   | 25.0          | -0.03                               | 922.9      | Started Acquisition       |                          |                                |  |
| 12/24/2011  | 13:10:57         | -0   | 25.0          | -0.03                               | 923.3      | Pump 20bbls Water Spacer  |                          |                                |  |
| 12/24/2011  | 13:10:58         | -0   | 25.0          | -0.03                               | 923.8      | Sample # 011199           |                          |                                |  |
| 12/24/2011  | 13:11:00         | 0  | 25.0          | -0.03                               | 924.6      | Start Job                 |                          |                                |  |
| 12/24/2011  | 13:11:12         | -0   | 25.0          | -0.03                               | 929.6      | Rig Up Per STD 5          |                          |                                |  |
| 12/24/2011  | 13:11:13         | -0   | 25.0          | -0.03                               | 930.0      | Varrify Rates             |                          |                                |  |
| 12/24/2011  | 13:11:14         | -1   | 25.0          | -0.03                               | 930.4      | Hold Safty Meeting        |                          |                                |  |
| 12/24/2011  | 13:11:22         | -1   | 25.0          | -0.03                               | 933.8      | Pressure Test Lines       |                          |                                |  |
| 12/24/2011  | 13:11:23         | -0   | 25.0          | -0.03                               | 934.2      | 500 psi Test = Good       |                          |                                |  |
| 12/24/2011  | 13:11:26         | -0   | 25.0          | -0.03                               | 935.4      | Start Pumping Spacer      |                          |                                |  |
| 12/24/2011  | 13:11:28         | -1   | 25.0          | -0.03                               | 936.3      | Pump 20bbls Water Spacer  |                          |                                |  |
| 12/24/2011  | 13:12:36         | -1   | 25.0          | -0.03                               | 964.6      |                           |                          |                                |  |
| 12/24/2011  | 13:14:16         | -1   | 25.0          | -0.03                               | 1006.3     |                           |                          |                                |  |
| 12/24/2011  | 13:15:56         | -3   | 2.9           | 7.79                                | 1020.8     |                           |                          |                                |  |
| 12/24/2011  | 13:17:36         | 61   | 1.9           | 8.36                                | 1023.9     |                           |                          |                                |  |
| 12/24/2011  | 13:19:16         | 20   | 1.2           | 8.38                                | 1027.4     |                           |                          |                                |  |
| 12/24/2011  | 13:20:56         | 6  | 0.0           | 8.37                                | 1029.4     |                           |                          |                                |  |
| 12/24/2011  | 13:22:36         | -7   | 0.0           | 8.38                                | 1029.4     |                           |                          |                                |  |
| 12/24/2011  | 13:24:16         | 10   | 1.4           | 8.38                                | 1030.1     |                           |                          |                                |  |
| 12/24/2011  | 13:25:56         | -5   | 0.0           | 8.37                                | 1033.4     |                           |                          |                                |  |
| 12/24/2011  | 13:27:36         | -9   | 0.0           | 8.37                                | 0.0        |                           |                          |                                |  |

| Well<br>HMU FEDERAL 16-16C HMU FEDERAL 16-16C |                        |                             | Field<br>Mamm Creek |                 | Job Start<br>Dec/24/2011 | Customer<br>EnCana                 |  | Job Number<br>682777 |
|---|------------------------|-----------------------------|---------------------|-----------------|--------------------------|------------------------------------|--|----------------------|
| Date  | Time<br>24-hr<br>clock | Treating<br>Pressure<br>PSI | Flow<br>Rate<br>B/M | Density<br>LB/G | Volume<br>BBL            | Message                            |  |                      |
| 12/24/2011                                    | 13:30:56               | -1                          | 0.0                 | 8.37            | 0.0                      |                                    |  |                      |
| 12/24/2011                                    | 13:32:36               | 4                           | 0.0                 | 8.37            | 0.0                      |                                    |  |                      |
| 12/24/2011                                    | 13:34:16               | -12                         | 0.0                 | 8.38            | 0.0                      |                                    |  |                      |
| 12/24/2011                                    | 13:35:56               | -12                         | 0.0                 | 8.38            | 0.0                      |                                    |  |                      |
| 12/24/2011                                    | 13:37:36               | -11                         | 0.0                 | 8.37            | 0.1                      |                                    |  |                      |
| 12/24/2011                                    | 13:39:16               | 14                          | 0.5                 | 8.37            | 1.8                      |                                    |  |                      |
| 12/24/2011                                    | 13:40:56               | 521                         | 0.0                 | 8.37            | 2.1                      |                                    |  |                      |
| 12/24/2011                                    | 13:42:36               | 3270                        | 0.0                 | 8.37            | 2.2                      |                                    |  |                      |
| 12/24/2011                                    | 13:44:16               | 9                           | 0.0                 | 8.38            | 2.2                      |                                    |  |                      |
| 12/24/2011                                    | 13:45:56               | 167                         | 4.7                 | 8.37            | 6.3                      |                                    |  |                      |
| 12/24/2011                                    | 13:47:36               | 261                         | 6.3                 | 8.38            | 16.1                     |                                    |  |                      |
| 12/24/2011                                    | 13:49:16               | 324                         | 6.2                 | 12.73           | 26.6                     |                                    |  |                      |
| 12/24/2011                                    | 13:49:30               | 418                         | 6.2                 | 12.74           | 28.1                     | End Spacer                         |  |                      |
| 12/24/2011                                    | 13:49:32               | 414                         | 6.2                 | 12.74           | 28.3                     | Start Cement Slurry                |  |                      |
| 12/24/2011                                    | 13:49:42               | 411                         | 6.2                 | 12.74           | 29.3                     | Start Mixing Scav Slurry           |  |                      |
| 12/24/2011                                    | 13:50:01               | 412                         | 6.2                 | 12.67           | 31.3                     | Reset Total, Vol = 142.21 bbl      |  |                      |
| 12/24/2011                                    | 13:50:06               | 399                         | 6.2                 | 12.57           | 31.8                     | End Scavenger Slurry               |  |                      |
| 12/24/2011                                    | 13:50:07               | 403                         | 6.2                 | 12.56           | 31.9                     | Start Mixing Lead Slurry           |  |                      |
| 12/24/2011                                    | 13:50:56               | 398                         | 6.2                 | 12.66           | 37.0                     |                                    |  |                      |
| 12/24/2011                                    | 13:52:36               | 354                         | 6.2                 | 12.59           | 47.4                     |                                    |  |                      |
| 12/24/2011                                    | 13:54:16               | 522                         | 8.0                 | 12.54           | 58.4                     |                                    |  |                      |
| 12/24/2011                                    | 13:55:56               | 508                         | 8.0                 | 12.53           | 71.7                     |                                    |  |                      |
| 12/24/2011                                    | 13:56:17               | 522                         | 8.0                 | 12.52           | 74.5                     | Pump 366sks (138bbls) of 12.5 Lead |  |                      |
| 12/24/2011                                    | 13:56:18               | 520                         | 8.0                 | 12.52           | 74.7                     | Yield of 2.11                      |  |                      |
| 12/24/2011                                    | 13:56:19               | 518                         | 8.0                 | 12.52           | 74.8                     | Take Wet/ Dry Samples              |  |                      |
| 12/24/2011                                    | 13:57:19               | 527                         | 8.0                 | 12.53           | 82.8                     | Sample # 011196                    |  |                      |
| 12/24/2011                                    | 13:57:20               | 527                         | 8.0                 | 12.53           | 82.9                     | Pressure Scale = 12.4              |  |                      |
| 12/24/2011                                    | 13:57:36               | 520                         | 8.0                 | 12.53           | 85.1                     |                                    |  |                      |
| 12/24/2011                                    | 13:59:16               | 507                         | 8.0                 | 12.55           | 98.4                     |                                    |  |                      |
| 12/24/2011                                    | 14:00:56               | 516                         | 8.0                 | 12.56           | 111.8                    |                                    |  |                      |
| 12/24/2011                                    | 14:02:36               | 510                         | 8.1                 | 12.59           | 125.2                    |                                    |  |                      |
| 12/24/2011                                    | 14:04:16               | 318                         | 6.1                 | 12.63           | 136.1                    |                                    |  |                      |
| 12/24/2011                                    | 14:05:56               | 322                         | 6.1                 | 12.61           | 146.2                    |                                    |  |                      |
| 12/24/2011                                    | 14:07:36               | 320                         | 6.1                 | 12.63           | 156.3                    |                                    |  |                      |
| 12/24/2011                                    | 14:09:16               | 332                         | 6.1                 | 12.59           | 166.5                    |                                    |  |                      |
| 12/24/2011                                    | 14:10:39               | -19                         | 0.0                 | 12.79           | 173.4                    | End Lead Slurry                    |  |                      |
| 12/24/2011                                    | 14:10:46               | -18                         | 0.0                 | 12.78           | 173.4                    | Start Mixing Scav Slurry           |  |                      |
| 12/24/2011                                    | 14:10:56               | -17                         | 0.0                 | 12.78           | 173.4                    |                                    |  |                      |
| 12/24/2011                                    | 14:12:36               | -15                         | 0.0                 | 12.72           | 173.4                    |                                    |  |                      |
| 12/24/2011                                    | 14:14:16               | -12                         | 0.0                 | 12.67           | 173.4                    |                                    |  |                      |
| 12/24/2011                                    | 14:14:33               | -11                         | 0.0                 | 12.66           | 173.4                    | Reset Total, Vol = 142.11 bbl      |  |                      |
| 12/24/2011                                    | 14:15:51               | 94                          | 2.9                 | 15.70           | 173.9                    | End Scavenger Slurry               |  |                      |
| 12/24/2011                                    | 14:15:54               | 113                         | 3.0                 | 15.70           | 174.1                    | Pump 150sks (31bbls) of 15.8 Tail  |  |                      |
| 12/24/2011                                    | 14:15:55               | 113                         | 3.0                 | 15.70           | 174.1                    | Good Returns                       |  |                      |
| 12/24/2011                                    | 14:15:56               | 120                         | 3.1                 | 15.70           | 174.2                    |                                    |  |                      |
| 12/24/2011                                    | 14:17:36               | 284                         | 4.5                 | 15.73           | 180.6                    |                                    |  |                      |
| 12/24/2011                                    | 14:19:16               | 286                         | 4.5                 | 15.85           | 188.0                    |                                    |  |                      |
| 12/24/2011                                    | 14:20:56               | 222                         | 4.5                 | 15.88           | 195.5                    |                                    |  |                      |
| 12/24/2011                                    | 14:22:36               | 290                         | 4.5                 | 15.94           | 202.9                    |                                    |  |                      |
| 12/24/2011                                    | 14:23:22               | -6                          | 0.6                 | 16.02           | 206.1                    | End Tail Slurry                    |  |                      |
| 12/24/2011                                    | 14:23:30               | -7                          | 0.0                 | 16.01           | 206.2                    | Drop Top Plug                      |  |                      |
| 12/24/2011                                    | 14:23:33               | -7                          | 0.0                 | 16.01           | 206.2                    | Start Displacement                 |  |                      |
| 12/24/2011                                    | 14:23:38               | -7                          | 0.0                 | 15.92           | 206.2                    | Reset Total, Vol = 32.77 bbl       |  |                      |
| 12/24/2011                                    | 14:23:39               | -7                          | 0.0                 | 15.92           | 206.2                    | Displace 118bbls of Water          |  |                      |

| Well                                  |                  |                       | Field         |              | Job Start   | Customer                          |  | Job Number |
|---------------------------------------|------------------|-----------------------|---------------|--------------|-------------|-----------------------------------|--|------------|
| HMU FEDERAL 16-16C HMU FEDERAL 16-16C |                  |                       | Mamm Creek    |              | Dec/24/2011 | EnCana                            |  | 682777     |
| Date                                  | Time 24-hr clock | Treating Pressure PSI | Flow Rate B/M | Density LB/G | Volume BBL  | Message                           |  |            |
| 12/24/2011                            | 14:25:56         | -6                    | 0.0           | 15.93        | 206.2       |                                   |  |            |
| 12/24/2011                            | 14:27:36         | -5                    | 0.0           | 11.07        | 206.2       |                                   |  |            |
| 12/24/2011                            | 14:29:16         | -4                    | 0.1           | 10.09        | 206.3       |                                   |  |            |
| 12/24/2011                            | 14:30:56         | 237                   | 6.2           | 9.28         | 210.7       |                                   |  |            |
| 12/24/2011                            | 14:32:36         | 197                   | 6.3           | 8.75         | 221.1       |                                   |  |            |
| 12/24/2011                            | 14:34:16         | 301                   | 8.2           | 8.37         | 233.1       |                                   |  |            |
| 12/24/2011                            | 14:35:56         | 360                   | 8.2           | 8.48         | 246.7       |                                   |  |            |
| 12/24/2011                            | 14:37:36         | 401                   | 8.2           | 8.39         | 260.4       |                                   |  |            |
| 12/24/2011                            | 14:39:16         | 424                   | 8.1           | 8.39         | 274.3       |                                   |  |            |
| 12/24/2011                            | 14:40:56         | 453                   | 8.1           | 8.39         | 287.8       |                                   |  |            |
| 12/24/2011                            | 14:41:05         | 459                   | 8.1           | 8.39         | 289.0       | 53 bbls of Cement Back To Surface |  |            |
| 12/24/2011                            | 14:42:36         | 514                   | 8.1           | 8.39         | 301.3       |                                   |  |            |
| 12/24/2011                            | 14:44:16         | 433                   | 7.8           | 8.39         | 314.8       |                                   |  |            |
| 12/24/2011                            | 14:45:56         | 407                   | 4.3           | 8.38         | 322.3       |                                   |  |            |
| 12/24/2011                            | 14:47:36         | 362                   | 2.2           | 8.38         | 327.9       |                                   |  |            |
| 12/24/2011                            | 14:49:16         | 396                   | 2.2           | 8.38         | 331.6       |                                   |  |            |
| 12/24/2011                            | 14:50:40         | 925                   | 0.0           | 8.38         | 334.2       | Bump Top Plug                     |  |            |
| 12/24/2011                            | 14:50:41         | 925                   | 0.0           | 8.38         | 334.2       | End Displacement                  |  |            |
| 12/24/2011                            | 14:50:56         | 920                   | 0.0           | 8.38         | 334.2       |                                   |  |            |
| 12/24/2011                            | 14:51:52         | -19                   | 0.0           | 8.39         | 334.2       | 1/2 bbls Back                     |  |            |
| 12/24/2011                            | 14:51:53         | -24                   | 0.0           | 8.39         | 334.2       | Floats Held                       |  |            |
| 12/24/2011                            | 14:52:36         | -24                   | 0.0           | 8.39         | 334.2       |                                   |  |            |
| 12/24/2011                            | 14:54:16         | 142                   | 0.0           | 8.39         | 334.2       |                                   |  |            |

Post Job Summary

| Average Pump Rates, bbl/min           |            |                                     |                         |                           | Volume of Fluid Injected, bbl |  |                   |  |  |  |
|---------------------------------------|------------|-------------------------------------|-------------------------|---------------------------|-------------------------------|--|-------------------|--|--|--|
| Slurry<br>5.5                         | N2         | Mud                                 | Maximum Rate<br>8.1     |                           | Total Slurry<br>445.1         | Mud<br>0.0   | Spacer<br>137.1   | N2   |  |  |
| Treating Pressure Summary, psi        |            |                                     |                         |                           | Breakdown Fluid               |  |                   |  |  |  |
| Maximum<br>3443                       | Final<br>7 | Average<br>382                      | Bump Plug to<br>900     | Breakdown                 | Type                          | Volume<br>bbl  | Density<br>lb/gal |  |  |  |
| Avg. N2 Percent<br>%                  |            | Designed Slurry Volume<br>169.0 bbl |                         | Displacement<br>128.0 bbl | Mix Water Temp<br>50 degF     | Cement Circulated to Surface?<br><input checked="" type="checkbox"/> |                   | Volume<br>53.0 bbl                                   |  |  |
|                                       |            |                                     |                         |                           |                               | Washed Thru Perfs<br><input type="checkbox"/>                        |                   | To<br>ft   |  |  |
| Customer or Authorized Representative |            |                                     | Schlumberger Supervisor |                           |                               | Circulation Lost<br><input type="checkbox"/>                         |                   | Job Completed<br><input checked="" type="checkbox"/> |  |  |
| Jeff Johnson                          |            |                                     | Dant Ryan/ Ted Hansen   |                           |                               | -  |                   | -  |  |  |