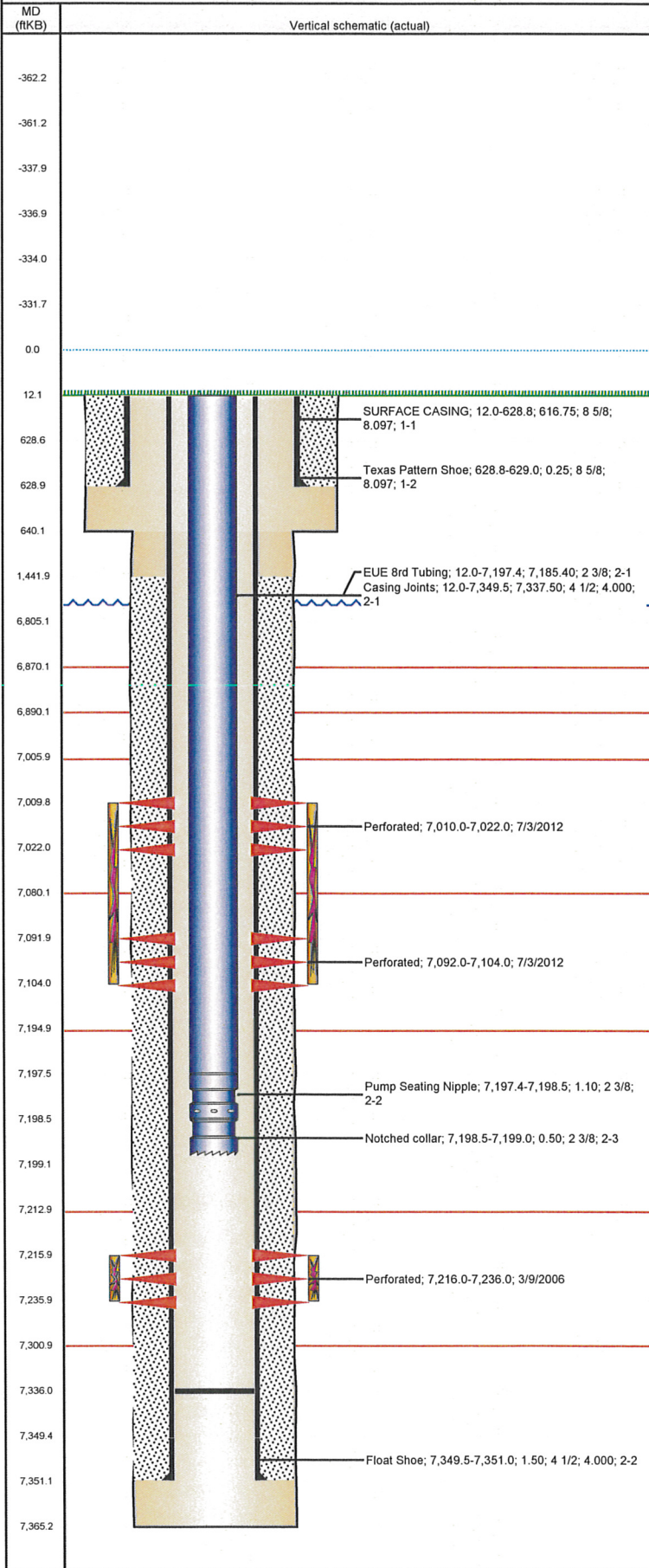


Well Name: STROH O02-07

VERTICAL - ORIGINAL HOLE, 8/23/2012 2:00:13 PM



## Well Header

API	Business Unit	District	Well Config
05-123-23417	WATTENBERG	15	VERTICAL
Original KB Elevation (ft)	KB - GL / MSL (ftKB)	Spud Date	P & A Date
4,751.00	12.00	2/11/2006	

## Comment

## Directions To Well

HWY 257 AND WCR 52, S. 5/10, E. 4/10, S 3/10, E. 1/10, S. 2/10 TO TANK BATTERY THEN WEST 300' INTO

## Current PBTD (ftKB)

ORIGINAL HOLE - 7,336.0

## Surface Location (Congressional)

Quarter 1	Quarter 2	Quarter 3	Quarter 4	Section	Township	Twnshp N...	Range	Rng E/W Dir
		SW	NE	2	4	N	67	W

## Bottom Hole Location

North-South Distance (ft)	From N or S Line	East-West Distance (ft)	From E or W Line

## Plug Back Total Depths

Date	Depth (ftKB)	Method	Com
2/15/2006	7,336.0	CASING TALLY	LATCH DOWN BAFFLE, ORIGINAL PBTD
2/23/2006	7,319.0	CASED HOLE LOG	DEPTH LOGGER

## Wellbore Sections

Section Des	Size (in)	Act Top (ftKB)	Act Btm (ftKB)
SURFACE	12 1/4	12.0	640.0
PRODUCTION	7 7/8	640.0	7,365.0

## Zone Statuses

Zone Name	Status Date	Status	Job
CODELL	3/11/2006	PR	DRILLING/COMPLETION - ORIGINAL, 2/11/2006 00:00
CODELL	7/23/2012	PR	RE-FRAC & RECOMPLETE, 6/20/2012 00:00
NIOBRARA	7/23/2012	PR	RE-FRAC & RECOMPLETE, 6/20/2012 00:00

## Casing Strings

Csg Des	Run Date	OD (in)	Wt/Len (lb/ft)	Grade	Top (ftKB)	Set Depth (ftKB)
SURFACE	2/12/2006	8 5/8	24.00	J-55	12.0	629.0
PRODUCTION	2/15/2006	4 1/2	11.60	M-80	12.0	7,351.0

## Cement

Des	Top (ftKB)	Btm (ftKB)
SURFACE CASING CEMENT	12.0	629.0
PRODUCTION CASING CEMENT	1,442.0	7,351.0

## Tubing Components

Item Des	OD (in)	Wt (lb/ft)	Grade	Jts	Len (ft)
EUE 8rd Tubing	2 3/8	4.70	J-55	222	7,185.40
Pump Seating Nipple	2 3/8				1.10
Notched collar	2 3/8				0.50

## Perforation Data

Zone	Bnch/St g	Entered Shot Total	Top (ftKB)	Btm (ftKB)	Date
NIOBRARA, ORIGINAL HOLE	B	24	7,010.0	7,022.0	7/3/2012
NIOBRARA, ORIGINAL HOLE	A	24	7,092.0	7,104.0	7/3/2012
CODELL, ORIGINAL HOLE		80	7,216.0	7,236.0	3/9/2006

## Stimulations & Treatments

Bnch/Stg	Date	Zone	Primary Job Type
	3/9/2006	CODELL, ORIGINAL HOLE	DRILLING/COMPLETION - ORIGINAL

## Comment

Total Add Amount	Total Clean Volume...	Vol Slurry Tot (gal)	Vol Gas Tot (MCF)
Proppant Ottawa 270800 lb		128058.00	
Avg Treat Pressure (psi)	Max Treat Pressure (psi)	Avg Treat Rate (bbl/min)	Max Treat Rate (bbl/min)
6,470.0	7,327.0	14.20	15.40

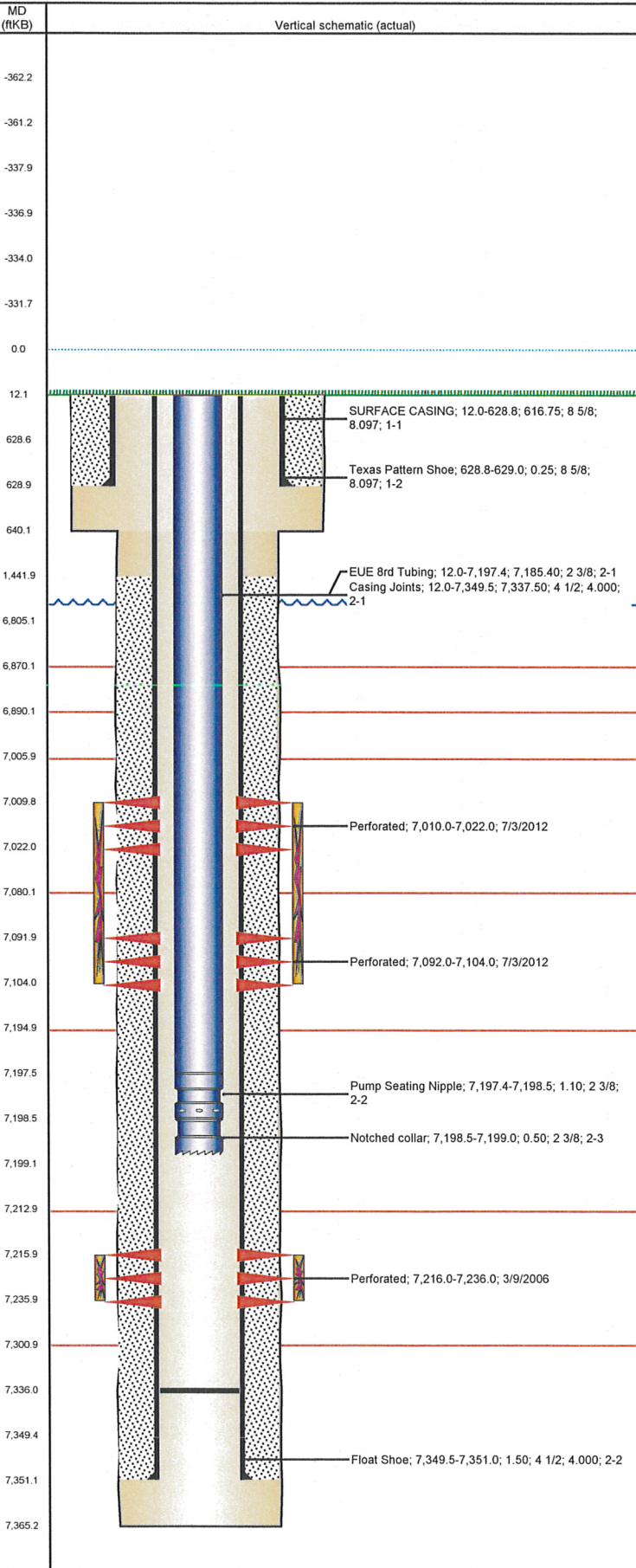
Bnch/Stg	Date	Zone	Primary Job Type
	7/3/2012	CODELL, ORIGINAL HOLE	RE-FRAC & RECOMPLETE

## Comment

Total Add Amount	Total Clean Volume...	Vol Slurry Tot (gal)	Vol Gas Tot (MCF)
Proppant Ottawa 201595.6 lb	109450.74	118584.48	
Avg Treat Pressure (psi)	Max Treat Pressure (psi)	Avg Treat Rate (bbl/min)	Max Treat Rate (bbl/min)
3,635.0	4,757.0	31.14	34.64

Well Name: STROH O02-07

VERTICAL - ORIGINAL HOLE, 8/23/2012 2:00:13 PM



## Stimulations & Treatments

Bnch/Stg	Date	Zone	Primary Job Type
	7/3/2012	NIOBRARA, ORIGINAL HOLE	RE-FRAC & RECOMPLETE
Comment			
Total Add Amount		Total Clean Volume...	Vol Slurry Tot (gal)
Proppant Ottawa 252537.5 lb		155859.90	167298.60
Avg Treat Pressure (psi)	Max Treat Pressure (psi)	Avg Treat Rate (bbl/min)	Max Treat Rate (bbl/min)
4,515.0	4,829.0	44.60	55.60

## Other In Hole

Run Date	Des	OD (in)	Top (ftKB)	Btm (ftKB)

## Logs

Date	Type	Top (ftKB)	Btm (ftKB)
2/15/2006	COMPENSATED DENSITY	2,400.0	7,342.0
2/15/2006	INDUCTION	629.0	7,362.0
2/23/2006	CBL/CCL/GR	1,300.0	7,318.0