

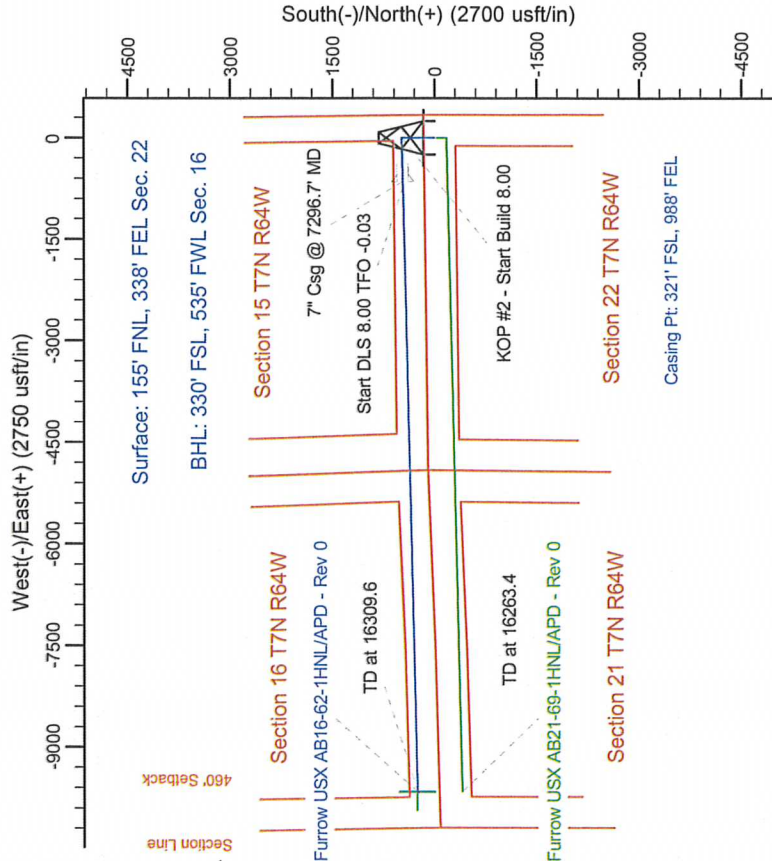
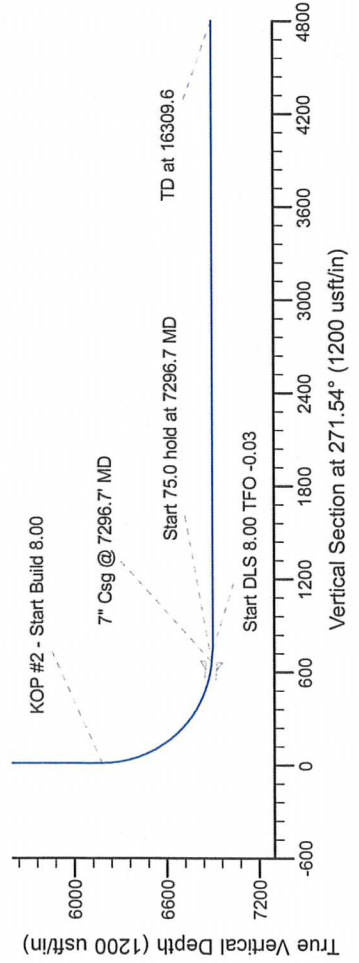
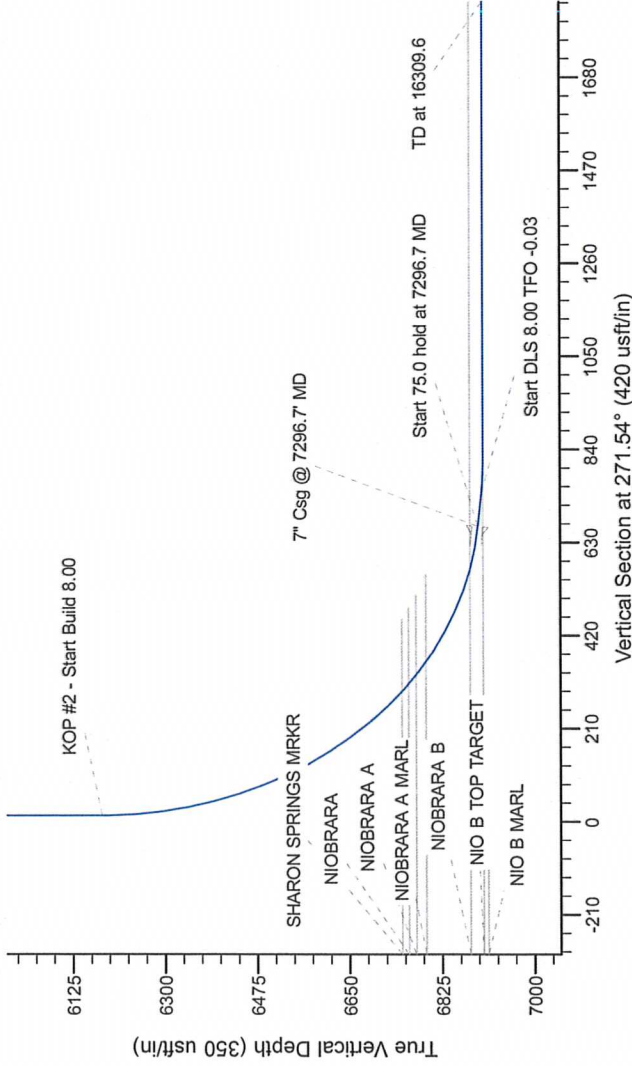
Project: Wattenberg Field
Site: AB (Sec.22-T07N-R64W) Weld County, CO
Well: Furrow USX AB16-62-1HNL
Wellbore: Original Drilling
Design: APD - Rev 0

Northern Region Drilling

Geodetic System: US State Plane 1983
Datum: North American Datum 1983
Ellipsoid: GRS 1980
Zone: Colorado Northern Zone
System Datum: Mean Sea Level

SECTION DETAILS

Sec	MD	Inc	Azi	TVD	+N/-S	+E/-W	Dleg	TFace	VSecl	Target
1	0.0	0.00	0.00	0.0	0.0	0.0	0.00	0.00	0.0	
2	1800.0	0.00	0.00	1800.0	0.0	0.0	0.00	0.00	0.0	
3	2359.2	13.98	0.00	2353.7	67.9	0.0	2.50	0.00	1.8	
4	3904.6	13.98	0.00	3756.3	417.1	0.0	0.00	0.00	11.2	
5	4363.9	0.00	0.00	4310.0	485.0	0.0	2.50	180.00	13.1	
6	8234.2	0.00	0.00	6180.3	485.0	0.0	0.00	0.00	13.1	
7	7296.7	85.00	268.67	6893.8	469.8	-653.6	8.00	268.67	666.0	
8	7371.7	85.00	268.67	6900.3	468.1	-728.3	0.00	0.00	740.6	
9	7434.2	90.00	268.67	6903.0	466.6	-790.7	8.00	-0.03	803.0	
10	16309.6	90.00	268.67	6903.0	260.2	-9663.7	0.00	0.00	9667.2	Furrow USX AB21-62-1HNL BHL 330'FSL, 535'FSL



T
G
M

Azimuths to Grid North
True North: -0.63°
Magnetic North: 7.95°

Magnetic Field
Strength: 53173.0snT
Dip Angle: 67.20°
Date: 5/3/2012
Model: IGRF200510

WELL DETAILS: Furrow USX AB16-62-1HNL			
Northing	Ground Level: 4830.0	Latitude	Longitude
1450360.53	3270253.85	40.565570	-104.527250
Plan: APD - Rev 0 (Furrow USX AB16-62-1HNL/Original Drilling)			
Created By: Carrie Willers		Date: 13:14, May 03 2012	
Checked:		Date:	
Reviewed:		Date:	
Approved:		Date:	