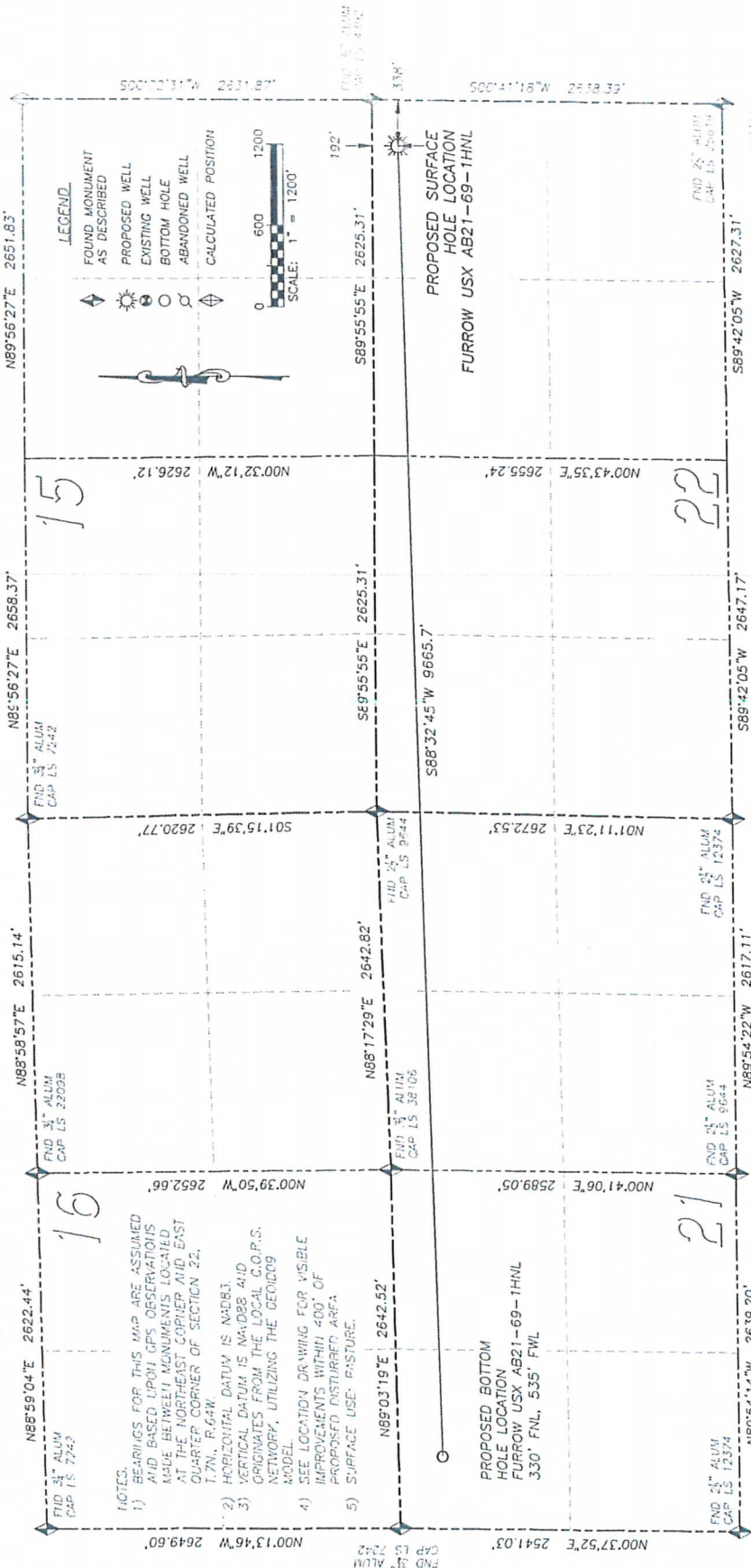


DALEY LAND SURVEYING, INC. PARKER, CO. 80134 303 953 9841
WELL LOCATION CERTIFICATE - FURROW USX AB21-69-1HNL
 SECTION 22, TOWNSHIP 7 NORTH, RANGE 64 WEST OF THE 6TH PRINCIPAL MERIDIAN



- NOTES:
- 1) BEARINGS FOR THIS MAP ARE ASSUMED AND BASED UPON GPS OBSERVATIONS MADE BETWEEN MONUMENTS LOCATED AT THE NORTHEAST CORNER AND EAST QUARTER CORNER OF SECTION 22, T.7N., R.64W.
 - 2) HORIZONTAL DATUM IS NAD83.
 - 3) VERTICAL DATUM IS NAVD88 AND ORIGINATES FROM THE LOCAL C.O.P.S. NETWORK, UTILIZING THE GEOID09 MODEL.
 - 4) SEE LOCATION DRAWING FOR VISIBLE IMPROVEMENTS WITHIN 400' OF PROPOSED DISTURBED AREA.
 - 5) SURFACE USE: PASTURE.

NAD 83 LATITUDE AND LONGITUDE

FURROW USX AB21-69-1HNL SURFACE HOLE:	BOTTOM HOLE:
LATITUDE: N40.56547°	LATITUDE: N40.56476°
LONGITUDE: W104.52726°	LONGITUDE: W104.56202°
ELEVATION: 4830'	FOOTAGE: 330' FNL,
FOOTAGE: 192' FNL, 338' FEL	535' FWL
POOP: 1.0	OF SECTION 21
OTR/OTR: NE4/NE4	
PROP LINE: 192 ± NORTH	
	NEAREST EXISTING WELL:
	LATITUDE: N40.56504°
	LONGITUDE: W104.52515°
	607' SOUTHEAST



FOR AND ON BEHALF OF
 DALEY LAND SURVEYING, INC.
 Robert Daley, PLS 35597

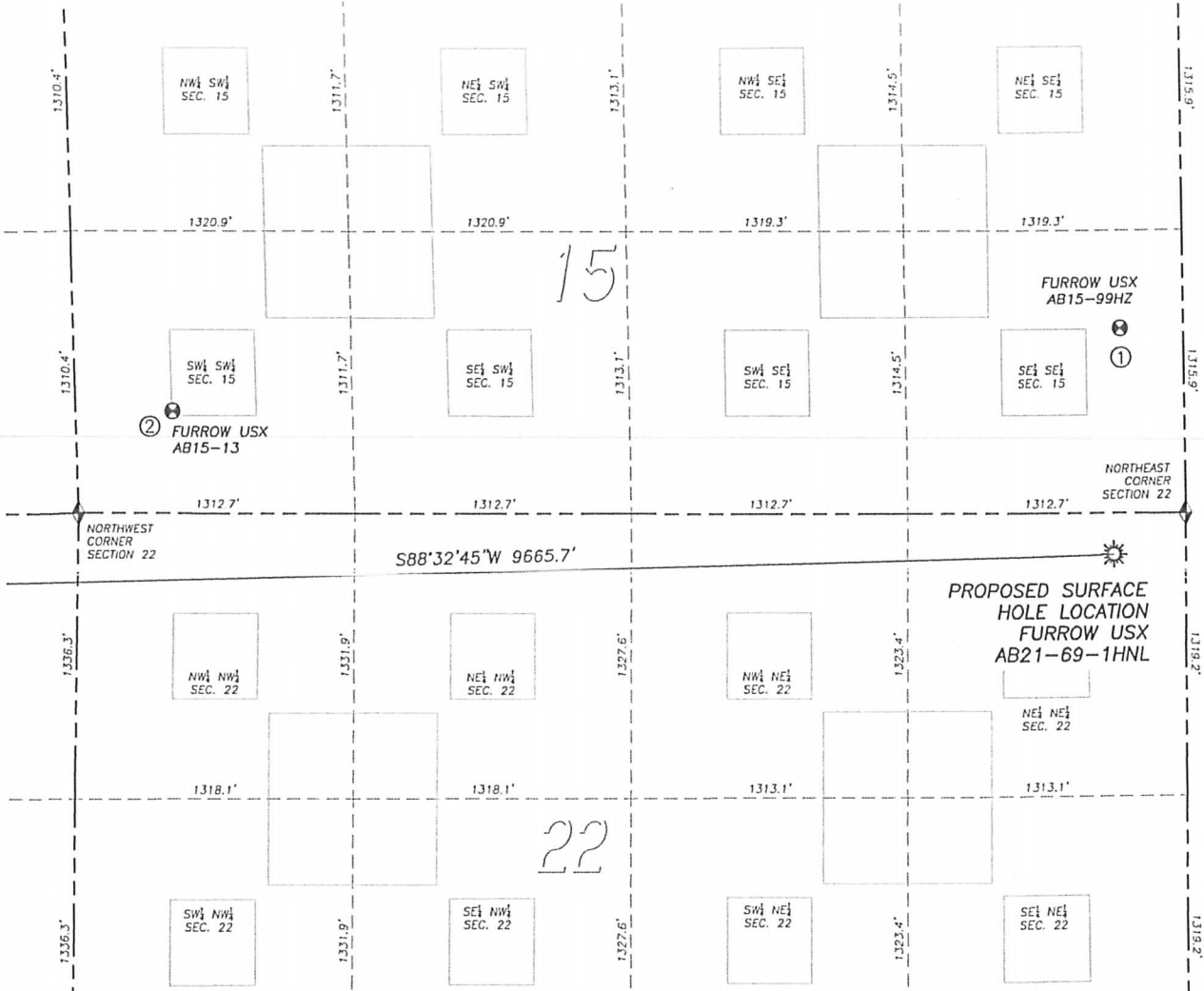
IN ACCORDANCE WITH A REQUEST FROM RYAN HAWKINS OF NOBLE ENERGY INC., DALEY LAND SURVEYING, INC. HAS DETERMINED THE SURFACE LOCATION OF THE FURROW USX AB21-69-1HNL WELL TO BE 192' FNL, 338' FEL, AS MEASURED AT NINETY (90) DEGREES FROM THE SECTION LINES OF SECTION 22, TOWNSHIP 7 NORTH, RANGE 64 WEST OF THE 6TH PRINCIPAL MERIDIAN, WELD COUNTY, COLORADO. THE BOTTOM HOLE LOCATION, PROVIDED BY THE CLIENT, IS TO BE 330' FNL, 535' FWL OF SECTION 21, T.7N., R.64W.

I HEREBY CERTIFY THAT THIS WELL LOCATION CERTIFICATE WAS PREPARED BY ME OR UNDER MY DIRECT SUPERVISION, THAT THE WORK WAS COMPLETED ON 3/15/2012 FOR AND ON BEHALF OF NOBLE ENERGY, INC., AND THAT THIS MAP DOES NOT REPRESENT A BOUNDARY SURVEY, IT IS NOT A LAND SURVEY PLAT OR AN IMPROVEMENT SURVEY PLAT AND IT IS NOT TO BE RELIED UPON FOR THE ESTABLISHMENT OF FENCE, BUILDING OR OTHER FUTURE IMPROVEMENT LINES.

NOTES: According to Colorado law you MUST commence any legal action based upon any defect in this W.L.C. within three years after you first discover such defect. In no event may any action based upon any such defect in this W.L.C. be commenced more than ten years from the date of the certification shown herein.

SITE SKETCH FURROW USX AB21-69-1HNL

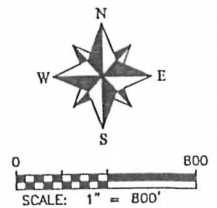
SECTION 22, TOWNSHIP 7 NORTH, RANGE 64 WEST OF THE 6TH PRINCIPAL MERIDIAN



Well Name	Qtr - Qtr	Footage		Latitude	Longitude	Elevation	PDOP
		FSL	FWL				
1 FURROW USX AB 15-99HZ	SE SE 15	860'	300'	40.56836	-104.52711	4826	1.8
2 FURROW USX AB 15-13	SW SW 15	476'	460'	40.56730	-104.54331	4892	1.3

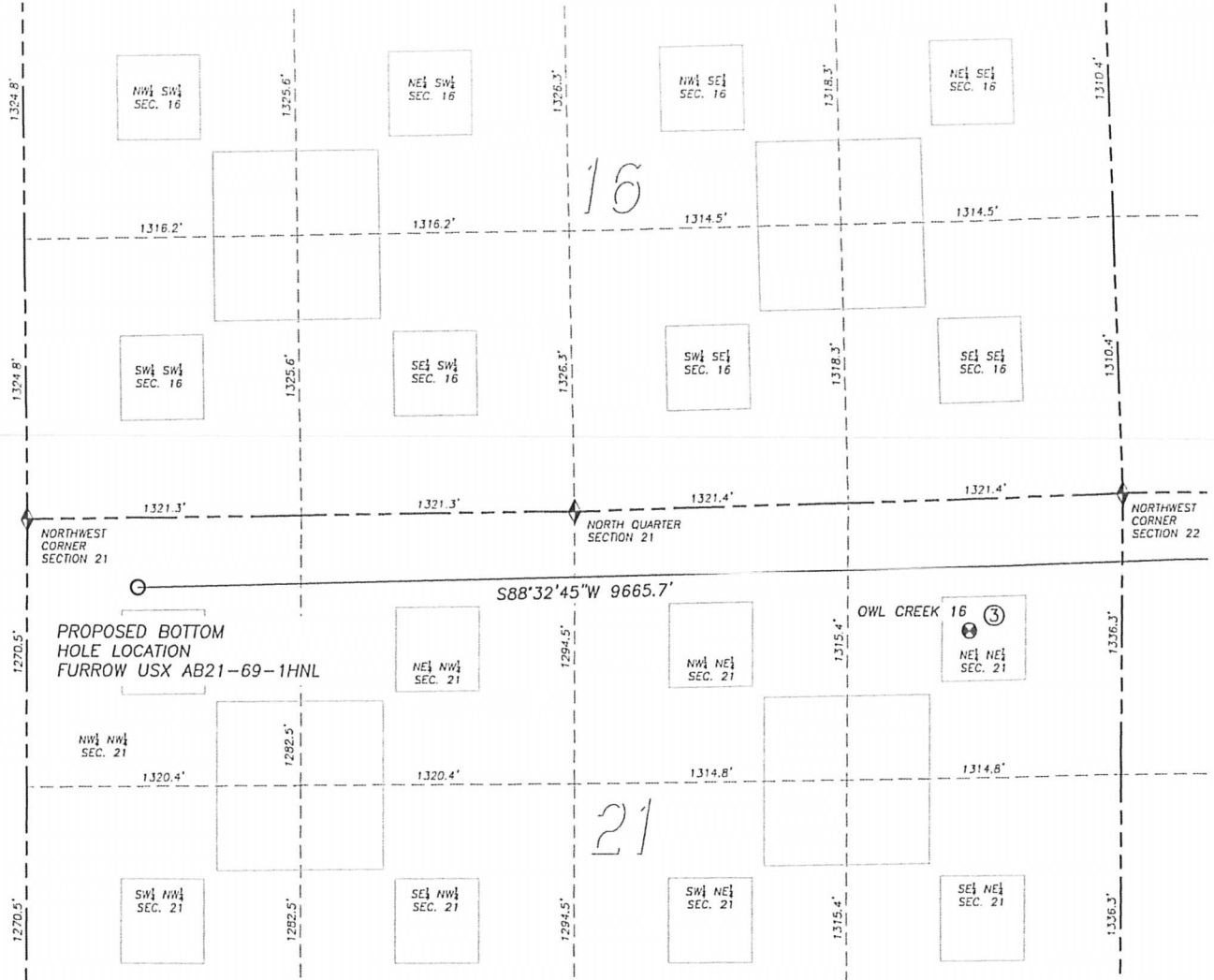
NOTES:
 1. THIS DOES NOT REPRESENT A BOUNDARY SURVEY
 2. HORIZONTAL DATUM IS NAD83
 3. VERTICAL DATUM IS NAVD88 AND ORIGINATES FROM THE LOCAL C.O.R.S. NETWORK, UTILIZING THE GEOID09 MODEL.

- LEGEND**
- FOUND MONUMENT AS DESCRIBED
 - PROPOSED WELL
 - EXISTING WELL
 - BOTTOM HOLE
 - ABANDONED WELL
 - CALCULATED POSITION



SITE SKETCH FURROW USX AB21-69-1HNL

SECTION 22, TOWNSHIP 7 NORTH, RANGE 64 WEST OF THE 6TH PRINCIPAL MERIDIAN



Well Name	Qtr - Qtr	Footage	Latitude	Longitude	Elevation	PDOP
3 OWL CREEK 16	NE NE 21	624' FSL 729' FEL	40.56422	-104.54759	4929	1.2

NOTES:
 1. THIS DOES NOT REPRESENT A BOUNDARY SURVEY
 2. HORIZONTAL DATUM IS NAD83
 3. VERTICAL DATUM IS NAVD88 AND ORIGINATES FROM THE LOCAL C.O.R.S. NETWORK, UTILIZING THE GEOD09 MODEL.

- LEGEND**
- FOUND MONUMENT AS DESCRIBED
 - PROPOSED WELL
 - EXISTING WELL
 - BOTTOM HOLE
 - ABANDONED WELL
 - CALCULATED POSITION

