

# **DJ/Paradox/WTX**

**Wattenberg**

**New Drills**

**lone 8-6-10**

**Wellbore #1**

**Plan: lone 8-6-10**

## **Standard Planning Report - Geographic**

**27 August, 2010**

**EnCana Corporation**  
 Planning Report - Geographic

<b>Database:</b>	EDM	<b>Local Co-ordinate Reference:</b>	Well lone 8-6-10
<b>Company:</b>	DJ/Paradox/WTX	<b>TVD Reference:</b>	WELL @ 5030.0ft (Original Well Elev)
<b>Project:</b>	Wattenberg	<b>MD Reference:</b>	WELL @ 5030.0ft (Original Well Elev)
<b>Site:</b>	New Drills	<b>North Reference:</b>	True
<b>Well:</b>	lone 8-6-10	<b>Survey Calculation Method:</b>	Minimum Curvature
<b>Wellbore:</b>	Wellbore #1		
<b>Design:</b>	lone 8-6-10		

<b>Project</b>	Wattenberg,		
<b>Map System:</b>	US State Plane 1983	<b>System Datum:</b>	Mean Sea Level
<b>Geo Datum:</b>	North American Datum 1983		
<b>Map Zone:</b>	Colorado Northern Zone		

<b>Site</b>	New Drills				
<b>Site Position:</b>		<b>Northing:</b>	1,252,450.66 ft	<b>Latitude:</b>	40° 1' 32.016 N
<b>From:</b>	Lat/Long	<b>Easting:</b>	3,120,627.66 ft	<b>Longitude:</b>	105° 4' 9.336 W
<b>Position Uncertainty:</b>	ft	<b>Slot Radius:</b>	in	<b>Grid Convergence:</b>	0.28 °

<b>Well</b>	lone 8-6-10					
<b>Well Position</b>	<b>+N/-S</b>	43,977.6 ft	<b>Northing:</b>	1,297,161.69 ft	<b>Latitude:</b>	40° 8' 48.156 N
	<b>+E/-W</b>	87,644.0 ft	<b>Easting:</b>	3,207,899.57 ft	<b>Longitude:</b>	104° 45' 22.680 W
<b>Position Uncertainty</b>		ft	<b>Wellhead Elevation:</b>	ft	<b>Ground Level:</b>	5,017.0 ft

<b>Wellbore</b>	Wellbore #1				
<b>Magnetics</b>	<b>Model Name</b>	<b>Sample Date</b>	<b>Declination (°)</b>	<b>Dip Angle (°)</b>	<b>Field Strength (nT)</b>
	IGRF200510	12/31/2009	9.00	66.90	53,170

<b>Design</b>	lone 8-6-10			
<b>Audit Notes:</b>				
<b>Version:</b>	<b>Phase:</b>	PROTOTYPE	<b>Tie On Depth:</b>	0.0
<b>Vertical Section:</b>	<b>Depth From (TVD) (ft)</b>	<b>+N/-S (ft)</b>	<b>+E/-W (ft)</b>	<b>Direction (°)</b>
	0.0	0.0	0.0	31.97

<b>Plan Sections</b>										
Measured Depth (ft)	Inclination (°)	Azimuth (°)	Vertical Depth (ft)	+N/-S (ft)	+E/-W (ft)	Dogleg Rate (°/100ft)	Build Rate (°/100ft)	Turn Rate (°/100ft)	TFO (°)	Target
0.0	0.00	0.00	0.0	0.0	0.0	0.00	0.00	0.00	0.00	
1,000.0	0.00	0.00	1,000.0	0.0	0.0	0.00	0.00	0.00	0.00	
1,632.5	12.65	31.97	1,627.3	59.0	36.8	2.00	2.00	0.00	31.97	
6,566.5	12.65	31.97	6,441.7	975.6	608.9	0.00	0.00	0.00	0.00	
7,199.0	0.00	0.00	7,069.0	1,034.6	645.7	2.00	-2.00	0.00	180.00	
8,199.0	0.00	0.00	8,069.0	1,034.6	645.7	0.00	0.00	0.00	0.00	lone 8-6-10

**EnCana Corporation**  
Planning Report - Geographic

<b>Database:</b>	EDM	<b>Local Co-ordinate Reference:</b>	Well lone 8-6-10
<b>Company:</b>	DJ/Paradox/WTX	<b>TVD Reference:</b>	WELL @ 5030.0ft (Original Well Elev)
<b>Project:</b>	Wattenberg	<b>MD Reference:</b>	WELL @ 5030.0ft (Original Well Elev)
<b>Site:</b>	New Drills	<b>North Reference:</b>	True
<b>Well:</b>	lone 8-6-10	<b>Survey Calculation Method:</b>	Minimum Curvature
<b>Wellbore:</b>	Wellbore #1		
<b>Design:</b>	lone 8-6-10		

Planned Survey										
Measured Depth (ft)	Inclination (°)	Azimuth (°)	Vertical Depth (ft)	+N/-S (ft)	+E/-W (ft)	Map Northing (ft)	Map Easting (ft)	Latitude	Longitude	
0.0	0.00	0.00	0.0	0.0	0.0	1,297,161.69	3,207,899.57	40° 8' 48.156 N	104° 45' 22.680 W	
950.0	0.00	0.00	950.0	0.0	0.0	1,297,161.69	3,207,899.57	40° 8' 48.156 N	104° 45' 22.680 W	
<b>Surface</b>										
1,000.0	0.00	0.00	1,000.0	0.0	0.0	1,297,161.69	3,207,899.57	40° 8' 48.156 N	104° 45' 22.680 W	
1,632.5	12.65	31.97	1,627.3	59.0	36.8	1,297,220.99	3,207,935.89	40° 8' 48.739 N	104° 45' 22.206 W	
4,668.8	12.65	31.97	4,590.0	623.0	388.9	1,297,787.98	3,208,283.21	40° 8' 54.313 N	104° 45' 17.672 W	
<b>Sussex</b>										
5,249.9	12.65	31.97	5,157.0	731.0	456.3	1,297,896.50	3,208,349.68	40° 8' 55.380 N	104° 45' 16.804 W	
<b>Shannon (est)</b>										
6,566.5	12.65	31.97	6,441.7	975.6	608.9	1,298,142.35	3,208,500.29	40° 8' 57.797 N	104° 45' 14.838 W	
7,199.0	0.00	0.00	7,069.0	1,034.6	645.7	1,298,201.65	3,208,536.61	40° 8' 58.380 N	104° 45' 14.364 W	
7,370.0	0.00	0.00	7,240.0	1,034.6	645.7	1,298,201.65	3,208,536.61	40° 8' 58.380 N	104° 45' 14.364 W	
<b>Niobrara</b>										
7,605.0	0.00	0.00	7,475.0	1,034.6	645.7	1,298,201.65	3,208,536.61	40° 8' 58.380 N	104° 45' 14.364 W	
<b>Codell</b>										
8,049.0	0.00	0.00	7,919.0	1,034.6	645.7	1,298,201.65	3,208,536.61	40° 8' 58.380 N	104° 45' 14.364 W	
<b>J Sand</b>										
8,130.0	0.00	0.00	8,000.0	1,034.6	645.7	1,298,201.65	3,208,536.61	40° 8' 58.380 N	104° 45' 14.364 W	
<b>A Marker</b>										
8,199.0	0.00	0.00	8,069.0	1,034.6	645.7	1,298,201.65	3,208,536.61	40° 8' 58.380 N	104° 45' 14.364 W	
<b>Production - lone 8-6-10</b>										

Design Targets										
Target Name	Dip Angle (°)	Dip Dir. (°)	TVD (ft)	+N/-S (ft)	+E/-W (ft)	Northing (ft)	Easting (ft)	Latitude	Longitude	
lone 8-6-10 - hit/miss target - Shape - Point	0.00	0.00	8,069.0	1,034.6	645.7	1,298,201.65	3,208,536.61	40° 8' 58.380 N	104° 45' 14.364 W	

Casing Points						
Measured Depth (ft)	Vertical Depth (ft)	Name	Casing Diameter (in)	Hole Diameter (in)		
950.0	950.0	Surface	8.625	12.250		
8,199.0	8,069.0	Production	4.500	7.785		

Formations						
Measured Depth (ft)	Vertical Depth (ft)	Name	Lithology	Dip (°)	Dip Direction (°)	
4,668.8	4,590.0	Sussex		0.00		
5,249.9	5,157.0	Shannon (est)		0.00		
7,370.0	7,240.0	Niobrara		0.00		
7,605.0	7,475.0	Codell		0.00		
8,049.0	7,919.0	J Sand		0.00		
8,130.0	8,000.0	A Marker		0.00		

**EnCana Corporation**  
Planning Report - Geographic

<b>Database:</b>	EDM	<b>Local Co-ordinate Reference:</b>	Well Ione 8-6-10
<b>Company:</b>	DJ/Paradox/WTX	<b>TVD Reference:</b>	WELL @ 5030.0ft (Original Well Elev)
<b>Project:</b>	Wattenberg	<b>MD Reference:</b>	WELL @ 5030.0ft (Original Well Elev)
<b>Site:</b>	New Drills	<b>North Reference:</b>	True
<b>Well:</b>	Ione 8-6-10	<b>Survey Calculation Method:</b>	Minimum Curvature
<b>Wellbore:</b>	Wellbore #1		
<b>Design:</b>	Ione 8-6-10		

REFERENCE INFORMATION

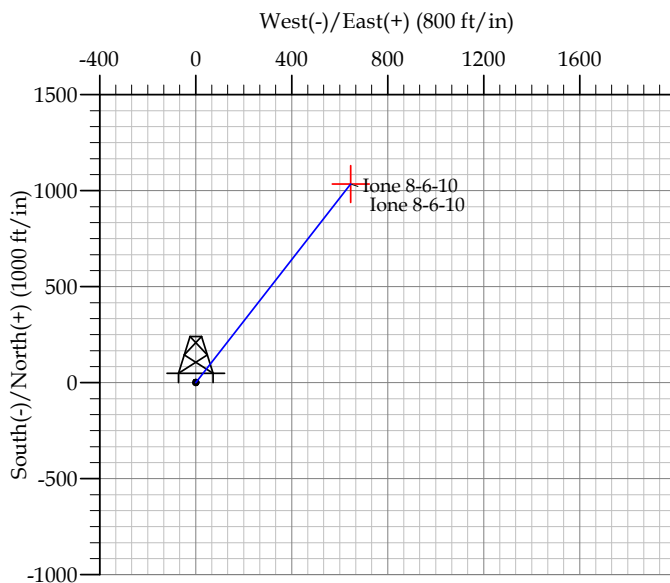
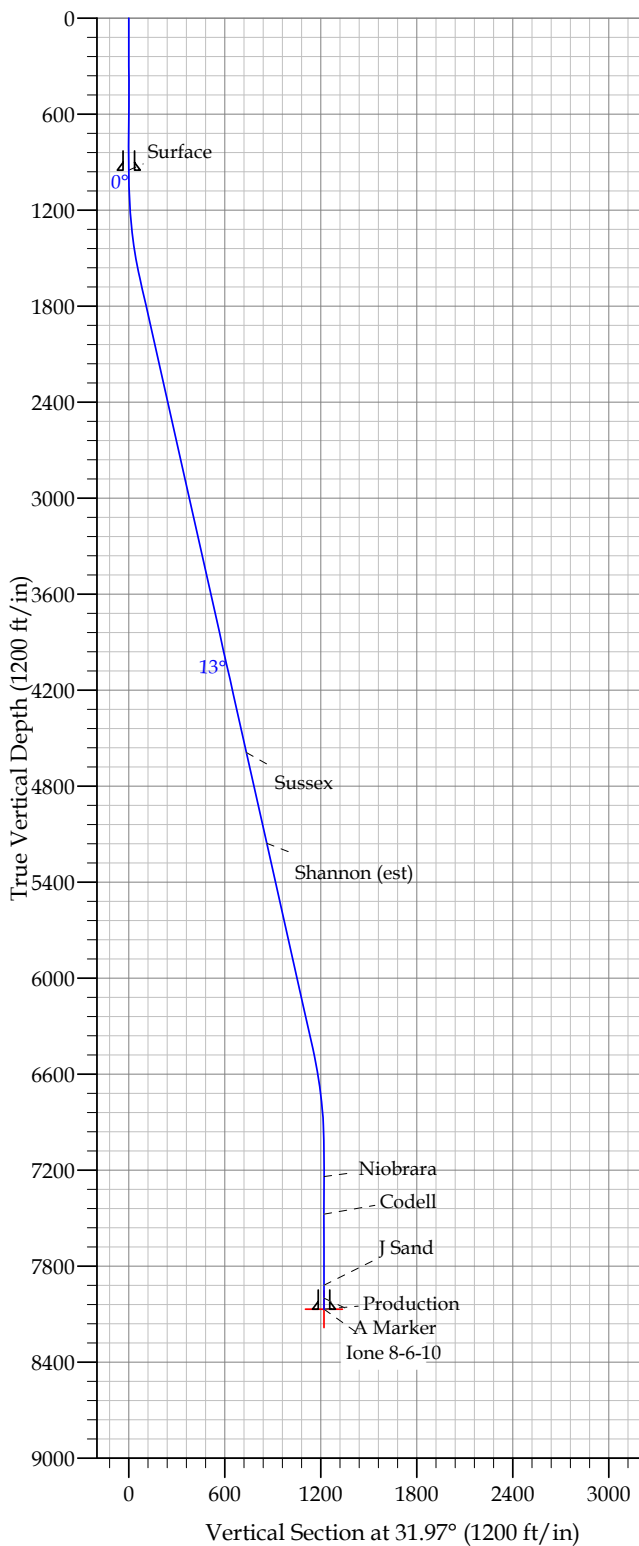
Co-ordinate (N/E) Reference: Well Ione 8-6-10, True North  
 Vertical (TVD) Reference: WELL @ 5030.0ft (Original Well Elev)  
 Section (VS) Reference: Slot - (0.0N, 0.0E)  
 Measured Depth Reference: WELL @ 5030.0ft (Original Well Elev)  
 Calculation Method:

WELL DETAILS: Ione 8-6-10

+N/-S	+E/-W	Northing	Ground Level:	5017.0	Longitude	Slot
0.0	0.0	1297161.69	Easting	3207899.57	40° 8' 48.156" N	22.680 W

SECTION DETAILS

Sec	MD	Inc	Azi	TVD	+N/-S	+E/-W	DLeg	TFace	VSec	Target
1	0.0	0.00	0.00	0.0	0.0	0.0	0.00	0.00	0.0	
2	1000.0	0.00	0.00	1000.0	0.0	0.0	0.00	0.00	0.0	
3	1632.5	12.65	31.97	1627.3	59.0	36.8	2.00	31.97	69.5	
4	6566.5	12.65	31.97	6441.7	975.6	608.9	0.00	0.00	1150.0	
5	7199.0	0.00	0.00	7069.0	1034.6	645.7	2.00	180.00	1219.6	
6	8199.0	0.00	0.00	8069.0	1034.6	645.7	0.00	0.00	1219.6	Ione 8-6-10



FORMATION TOP DETAILS

TVDPath	MDPath	Formation
4590.0	4668.8	Sussex
5157.0	5249.9	Shannon (est)
7240.0	7370.0	Niobrara
7475.0	7605.0	Codell
7919.0	8049.0	J Sand
8000.0	8130.0	A Marker

CASING DETAILS

TVD	MD	Name	Size
950.0	950.0	Surface	8.625
8069.0	8199.0	Production	4.500