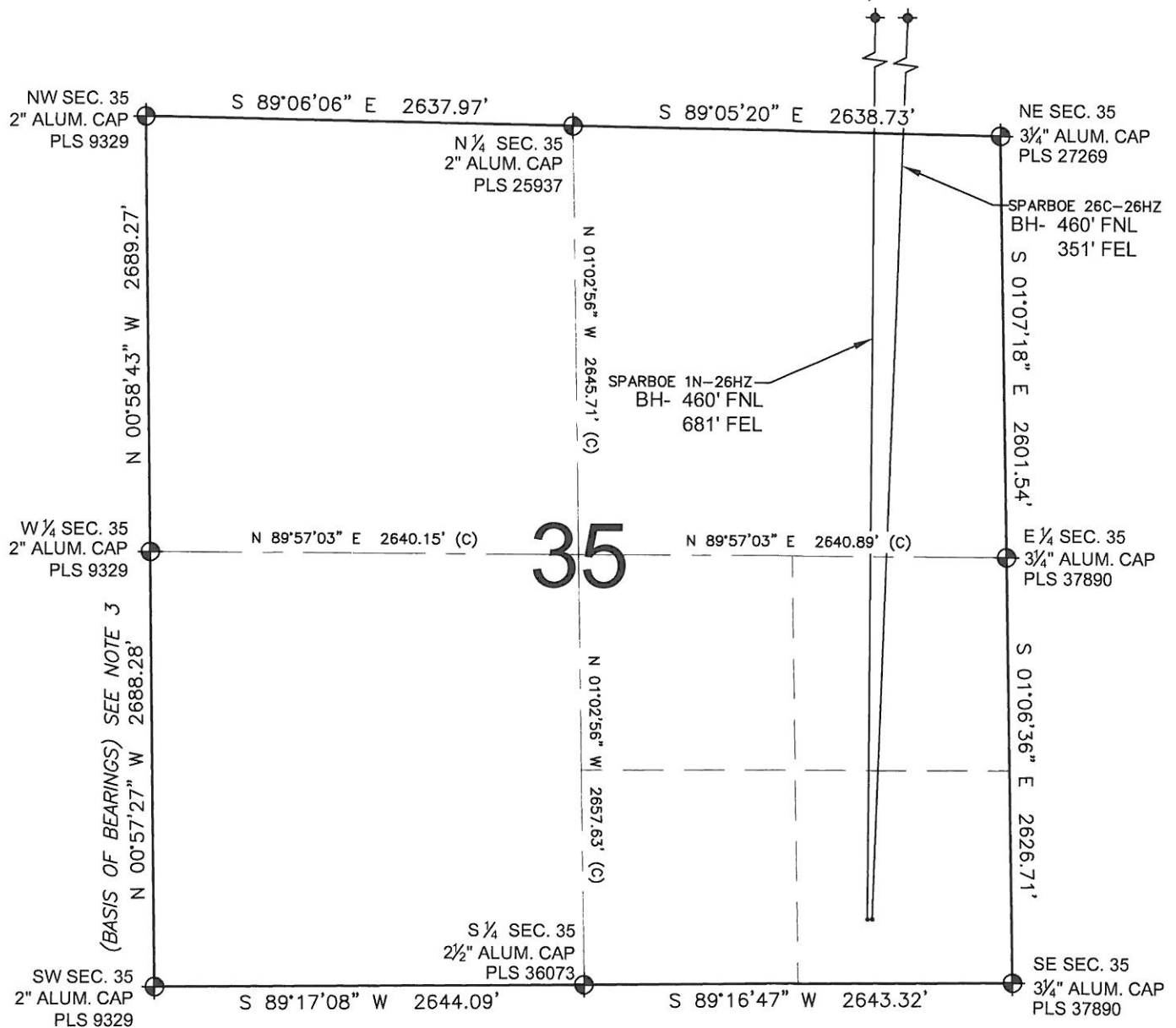


# PAD DRAWING: SPARBOE 2 PAD

SECTION 35, TOWNSHIP 2 NORTH, RANGE 65 WEST, 6TH P.M.



## NOTES:

- THIS FIELD SURVEY CONFORMS TO THE MINIMUM STANDARDS SET BY THE C.O.G.C.C., RULE NO. 215
- HORIZONTAL POSITIONS AND ORTHOMETRIC ELEVATIONS SHOWN AT THE WELL HEAD, ARE BASED ON GPS-RTK POSITIONS DERIVED FROM MINIMUM 2-HOUR STATIC OBSERVATIONS CORRECTED BY THE NATIONAL GEODETIC SURVEY ONLINE POSITIONING USER SERVICE, O.P.U.S. DATUM: HORIZONTAL = NAD83/2007, VERTICAL = NAVD88
- THE BASIS OF BEARINGS ARE STATE PLANE COORDINATE SYSTEM GRID BEARINGS SHOWN HEREON BETWEEN THE DESCRIBED THE MONUMENTS SHOWN HEREON.
- GRID DISTANCES ARE SHOWN, AS MEASURED IN THE FIELD, WITH TIES TO WELLS MEASURED PERPENDICULAR TO SECTION LINES.

## LEGEND

- = EXISTING MONUMENT
- ◆ = BOTTOM HOLE
- = PROPOSED WELL
- ◆ = EXISTING WELL
- BH= BOTTOM HOLE

## NOTES:

SPARBOE 1N-26HZ TO BE AT 399' FSL, 889' FEL.  
 BOTTOM HOLE AT 460' FNL & 681' FEL.  
 SPARBOE 26C-26HZ TO BE AT 399' FSL, 859' FEL.  
 BOTTOM HOLE AT 460' FNL & 351' FEL.

PREPARED BY:



KERR-MCGEE OIL & GAS ONSHORE LP

FIELD DATE: 05-08-12	PAD NAME: SPARBOE 2 PAD
DRAWING DATE: 05-18-12	SURFACE LOCATION: WELD COUNTY, COLORADO
BY: KAG	REV: SMF
SE 1/4 SE 1/4, SEC. 35, T2N, R65W, 6TH P.M.	

