

The Road to Excellence Starts with Safety

Sold To #: 358685	Ship To #: 2943823	Quote #:	Sales Order #: 9724346
Customer: SINGLE TREE RESOURCES		Customer Rep: Vedsted, Jim	
Well Name: Haley Smith		Well #: 12-19	API/UWI #:
Field:	City (SAP): STERLING	County/Parish: Logan	State: Colorado
Contractor: EXCELL		Rig/Platform Name/Num: 3	
Job Purpose: Cement Production Casing			
Well Type: Producing Well		Job Type: Cement Production Casing	
Sales Person: AARON, WESLEY		Srv Supervisor: VIGIL, NICHOLAS	MBU ID Emp #: 443481

Job Personnel

HES Emp Name	Exp Hrs	Emp #	HES Emp Name	Exp Hrs	Emp #	HES Emp Name	Exp Hrs	Emp #
MILLER, GEOFFREY Alan	6	460232	REYNOLDS, SCOTT Arthur	6	522540	VIGIL, NICHOLAS Joseph	6	443481

Equipment

HES Unit #	Distance-1 way	HES Unit #	Distance-1 way	HES Unit #	Distance-1 way	HES Unit #	Distance-1 way
10829456	135 mile	11036298	135 mile	11362287C	135 mile		

Job Hours

Date	On Location Hours	Operating Hours	Date	On Location Hours	Operating Hours	Date	On Location Hours	Operating Hours
8/6/2012	6	1						

TOTAL Total is the sum of each column separately

Job				Job Times			
Formation Name	Formation Depth (MD)	Top	Bottom	Called Out	Date	Time	Time Zone
Form Type			BHST	On Location	06 - Aug - 2012	00:00	MST
Job depth MD	5458. ft		Job Depth TVD	5458. ft	06 - Aug - 2012	06:00	MST
Water Depth			Wk Ht Above Floor		06 - Aug - 2012	10:24	MST
Perforation Depth (MD)	From		To	Job Completed	06 - Aug - 2012	11:15	GMT
				Departed Loc	06 - Aug - 2012	12:30	MST

Well Data

Description	New / Used	Max pressure psig	Size in	ID in	Weight lbm/ft	Thread	Grade	Top MD ft	Bottom MD ft	Top TVD ft	Bottom TVD ft
Open Hole				7.875				770.	5458.		
Production Casing	Unknown		5.5	4.95	15.5				5450.		
Surface Casing	Unknown		8.625	8.097	24.		J-55		770.		

Sales/Rental/3rd Party (HES)

Description	Qty	Qty uom	Depth	Supplier
SHOE,FLOAT,5 1/2 8RD,2 3/4 SUPER SEAL	1	EA		
CENTRALIZER ASSY - TURBO - API -	8	EA		
CLAMP - LIMIT - 5-1/2 - HINGED -	1	EA		
KIT,HALL WELD-A	1	EA		
PLUG ASSY,3 WIPR LTH-DWN,5 1/2 CSG	1	EA		
BAFFLE ASSY - 5-1/2 8RD - LATCH-DOWN	1	EA		

Tools and Accessories

Type	Size	Qty	Make	Depth	Type	Size	Qty	Make	Depth	Type	Size	Qty	Make
Guide Shoe					Packer					Top Plug			
Float Shoe					Bridge Plug					Bottom Plug			
Float Collar					Retainer					SSR plug set			
Insert Float										Plug Container			
Stage Tool										Centralizers			

Miscellaneous Materials

Gelling Agt	Conc	Surfactant	Conc	Acid Type	Qty	Conc	%
Treatment Fld	Conc	Inhibitor	Conc	Sand Type	Size	Qty	

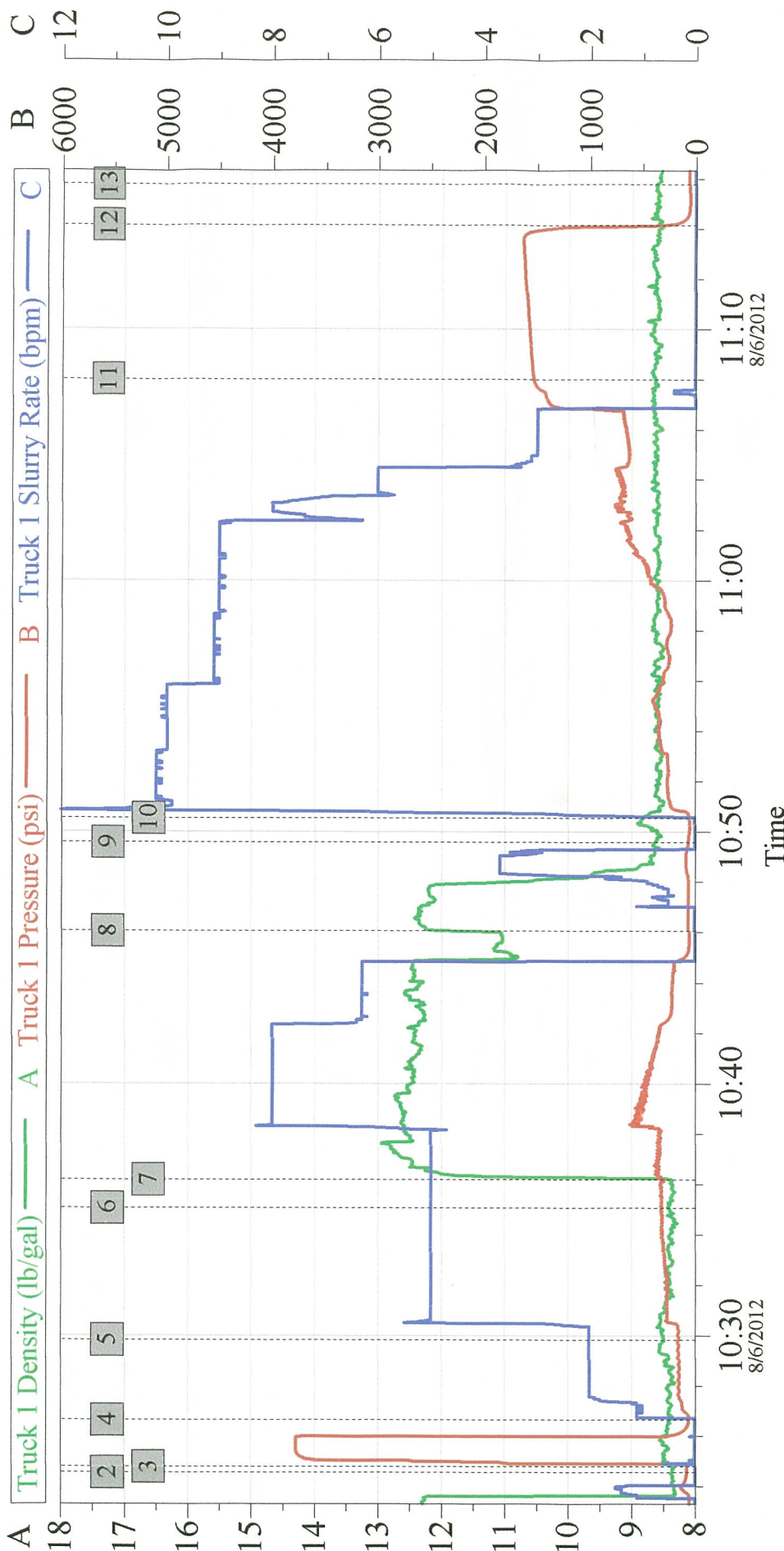
Fluid Data									
Stage/Plug #: 1									
Fluid #	Stage Type	Fluid Name	Qty	Qty uom	Mixing Density lbm/gal	Yield ft ³ /sk	Mix Fluid Gal/sk	Rate bbl/min	Total Mix Fluid Gal/sk
1	MUD FLUSH III	MUD FLUSH III - SBM (528788)	24.00	bbl	8.4	.0	1000.0	5.0	
2	Clayfix III			bbl	8.4	.0	.0	.0	
3	Extendacem 12.5#	EXTENDACEM (TM) SYSTEM (452981)	180.0	sacks	12.5	1.71	8.66	5.0	8.66
8.66 Gal		FRESH WATER							
Calculated Values		Pressures		Volumes					
Displacement		Shut In: Instant		Lost Returns	NO	Cement Slurry		Pad	
Top Of Cement	3,689'	5 Min		Cement Returns	NO	Actual Displacement	129	Treatment	
Frac Gradient		15 Min		Spacers	NO	Load and Breakdown		Total Job	
Rates									
Circulating		Mixing	8	Displacement	8	Avg. Job	7		
Cement Left In Pipe	Amount 42 ft	Reason	Shoe Joint						
Frac Ring # 1 @	ID	Frac ring # 2 @	ID	Frac Ring # 3 @	ID	Frac Ring # 4 @	ID		
The Information Stated Herein Is Correct				Customer Representative Signature					

The Road to Excellence Starts with Safety

Sold To #: 358685		Ship To #: 2943823		Quote #:		Sales Order #: 9724346	
Customer: SINGLE TREE RESOURCES				Customer Rep: Vedsted, Jim			
Well Name: Haley Smith			Well #: 12-19		API/UWI #:		
Field:		City (SAP): STERLING		County/Parish: Logan		State: Colorado	
Legal Description:							
Lat: N 0 deg. OR N 0 deg. 0 min. 0 secs.				Long: E 0 deg. OR E 0 deg. 0 min. 0 secs.			
Contractor: EXCELL			Rig/Platform Name/Num: 3				
Job Purpose: Cement Production Casing						Ticket Amount:	
Well Type: Producing Well			Job Type: Cement Production Casing				
Sales Person: AARON, WESLEY			Srvc Supervisor: VIGIL, NICHOLAS			MBU ID Emp #: 443481	

Activity Description	Date/Time	Cht #	Rate bbl/ min	Volume bbl		Pressure psig		Comments
				Stage	Total	Tubing	Casing	
Arrive At Loc	08/06/2012 06:00							WAITED FOR RIG TO FINISH RUNNING CASING, WATER TEST, HAZARD HUNT
Start Job	08/06/2012 10:24							
Test Lines	08/06/2012 10:24							PRESSURE TESTED LINES TO 3000 PSI
Pump Spacer 1	08/06/2012 10:26		2	5			197.0	RIG WATER W/CLAWEB III
Pump Spacer 2	08/06/2012 10:29		5	24			264.0	MUDFLUSH
Pump Spacer 1	08/06/2012 10:35		5	5			325.0	RIG WATER W/CLAWEB III
Pump Cement	08/06/2012 10:36		8				396.0	MIXED EXTENDACEM B2 @ 12.5 PPG
Shutdown	08/06/2012 10:46							
Drop Top Plug	08/06/2012 10:49							PLUG WAS PRE LOADED
Pump Displacement	08/06/2012 10:50		8	129			263.0	RIG WATER
Bump Plug	08/06/2012 11:08		3	129			701.0	CALCULATED PRESSURE TO LAND WAS 407 PSI + 1000 OVER PER COMPANY MAN
Check Floats	08/06/2012 11:14						1530. 0	FLOATS HELD
End Job	08/06/2012 11:15							RIG DOWN SAFETY MEETING

Single Tree Haley Smith 12-19
5.5 inch Production



Global Event Log

2	Start Job	10:24:34	3	Test Lines	10:24:48	4	H2O w/Claweb	10:26:39
5	Mudflush	10:29:50	6	H2O w/Claweb	10:35:04	7	12.5 ppg ExtendaCem	10:36:11
8	Shutdown	10:46:03	9	Drop Top Plug	10:49:35	10	Pump Displacement	10:50:32
11	Bump Plug	11:08:01	12	Check Floats	11:14:08	13	End Job	11:15:46