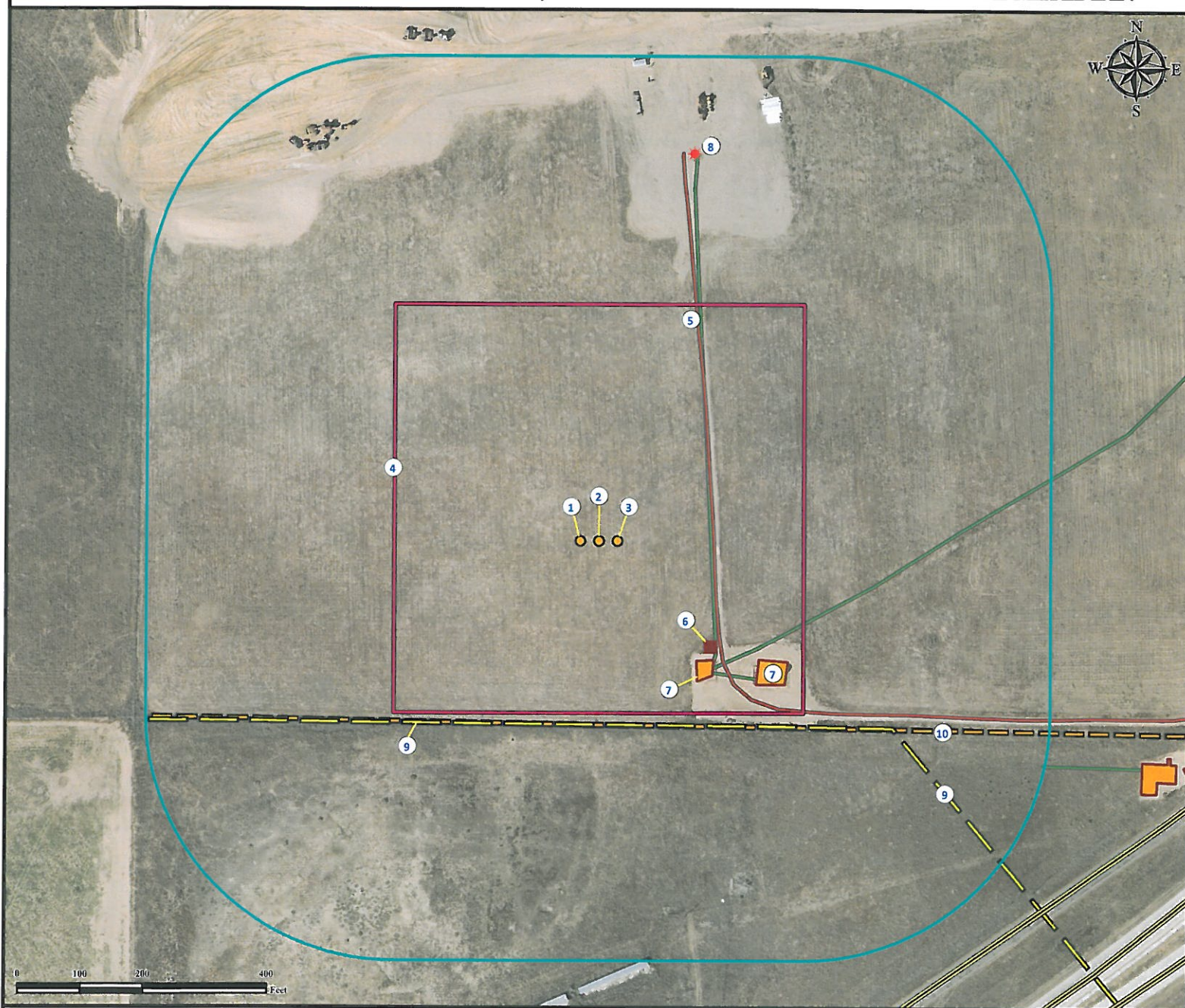


Location Drawing SPARBOE 27C-26HZ

Horizontal Multi Well Pad

SW¼ SE¼ SECTION 35, TOWNSHIP 2 NORTH, RANGE 65 WEST OF THE 6TH PRINCIPAL MERIDIAN



1. Proposed well SPARBOE 2N-26HZ.
2. Proposed well SPARBOE 27C-26HZ.
3. Proposed well SPARBOE 27N-26HZ.
4. Operational Disturbance Area.

5. Private Road is ±186' E.
6. Emissions Control Device is ±249' SE.
7. Existing Facilities are ±250' SE and ±322' SE.
8. Existing well HSR-WALDBAUM 15-35 is ±644' NE.

9. Powerlines are ±296' S and ±563' SE.
10. Fence is ±296' S.

Legend

- | | | |
|---------------|----------------------|----------------------|
| Proposed Well | Fence | Underground Pipeline |
| Existing Well | Facilities Enclosure | Public Road |
| ECD | Disturbance Area | Private Road |
| | 400' Radius | Powerline |

Reference Location

** All Measurements are Made from
Reference Well SPARBOE 27C-26HZ **
Lat: 40.088446° Long: -104.628189° (NAD83)
Elevation: 4942 Feet

Surface Use: Rangeland



Use our resources to find yours!
www.petro-fs.com
(303) 928-7128

Field Date: 07/11/2012
Drafting Date: 07/12/2012
Drafter: KLM
Checked By: BHF

Data Sources:
- Aerial courtesy of Anadarko
Petroleum Corporation (2010)

Prepared for:



KERR-MCGEE OIL & GAS ONSHORE LP