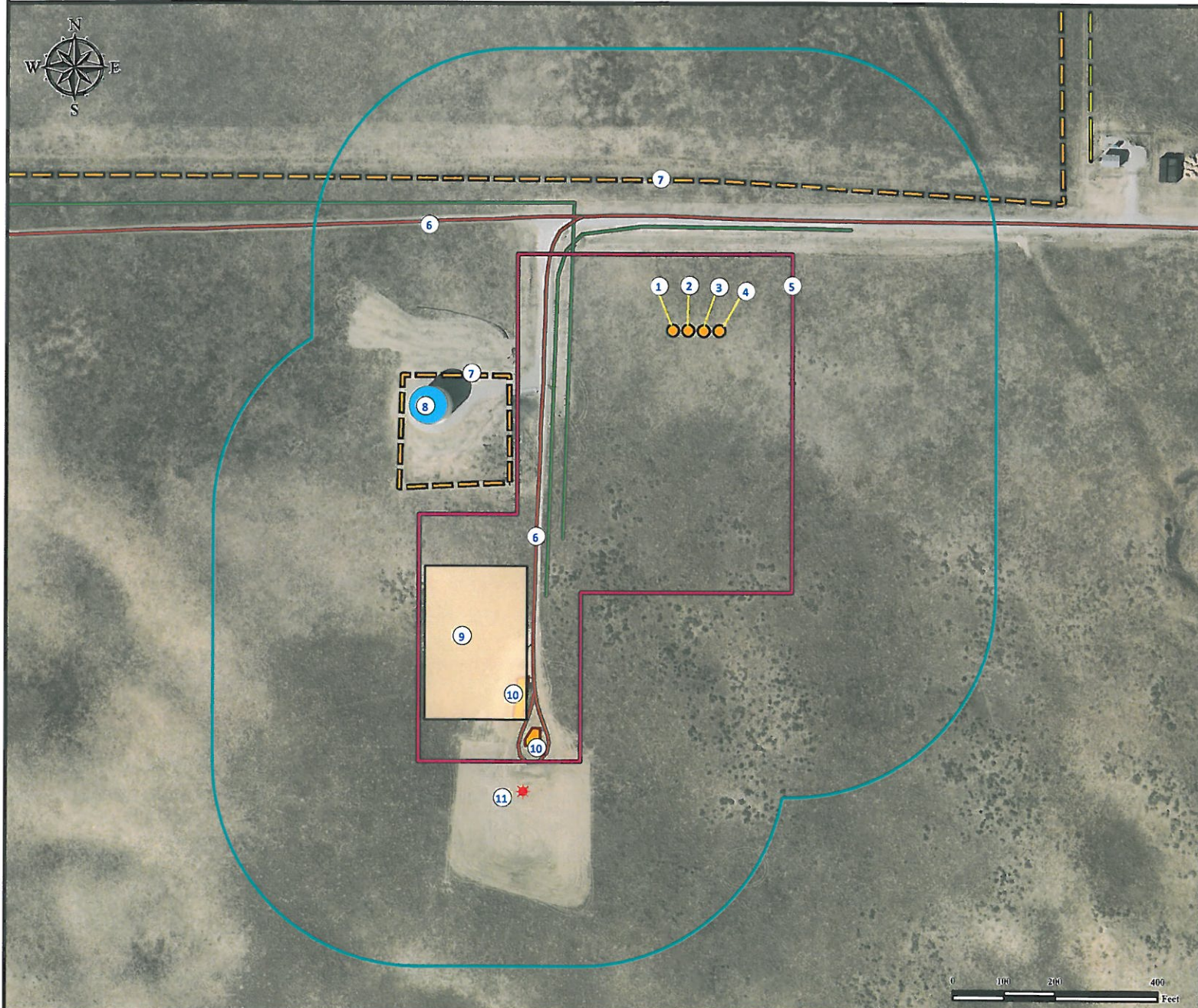


Location Drawing

SPARBOE 40N-3HZ

Horizontal Multi Well Pad

NE¼ NE¼ SECTION 34, TOWNSHIP 2 NORTH, RANGE 65 WEST OF THE 6TH PRINCIPAL MERIDIAN



1. Proposed well SPARBOE 8C-3HZ.
2. Proposed well SPARBOE 8N-3HZ.
3. Proposed well SPARBOE 40N-3HZ.
4. Proposed well SPARBOE 40C-3HZ.

5. Operational Disturbance Area.
6. Private Roads are $\pm 310'$ W and $\pm 221'$ N.
7. Fences are $\pm 389'$ SW and $\pm 294'$ N.
8. Water Tank is $\pm 518'$ SW.

9. Proposed Facility is $\pm 572'$ SW.
10. Existing Facilities are $\pm 753'$ SW and $\pm 836'$ SW.
11. Existing Well EICHTHALER #1 is $\pm 962'$ SW.

Legend

- | | | | |
|---------------|-------------------|----------------------|-----------|
| Proposed Well | Proposed Facility | Facilities Enclosure | Fence |
| Existing Well | Disturbance Area | Private Road | Powerline |
| Water Tank | 400' Radius | Underground Pipeline | |

Reference Location

** All Measurements are Made from Reference Well SPARBOE 40N-3HZ **
 Lat: 40.101628° Long: -104.643027° (NAD83)
 Elevation: 4970 Feet

Surface Use: Rangeland



Use our resources to find yours!
www.petro-fs.com
 (303) 928-7128

Field Date: 03/15/2012
 Drafting Date: 06/25/2012
 Drafter: DLR
 Checked By: BHF

Data Sources:
 - Aerial courtesy of Anadarko Petroleum Corporation (2010)

Prepared for:



KERR-MCGEE OIL & GAS ONSHORE LP