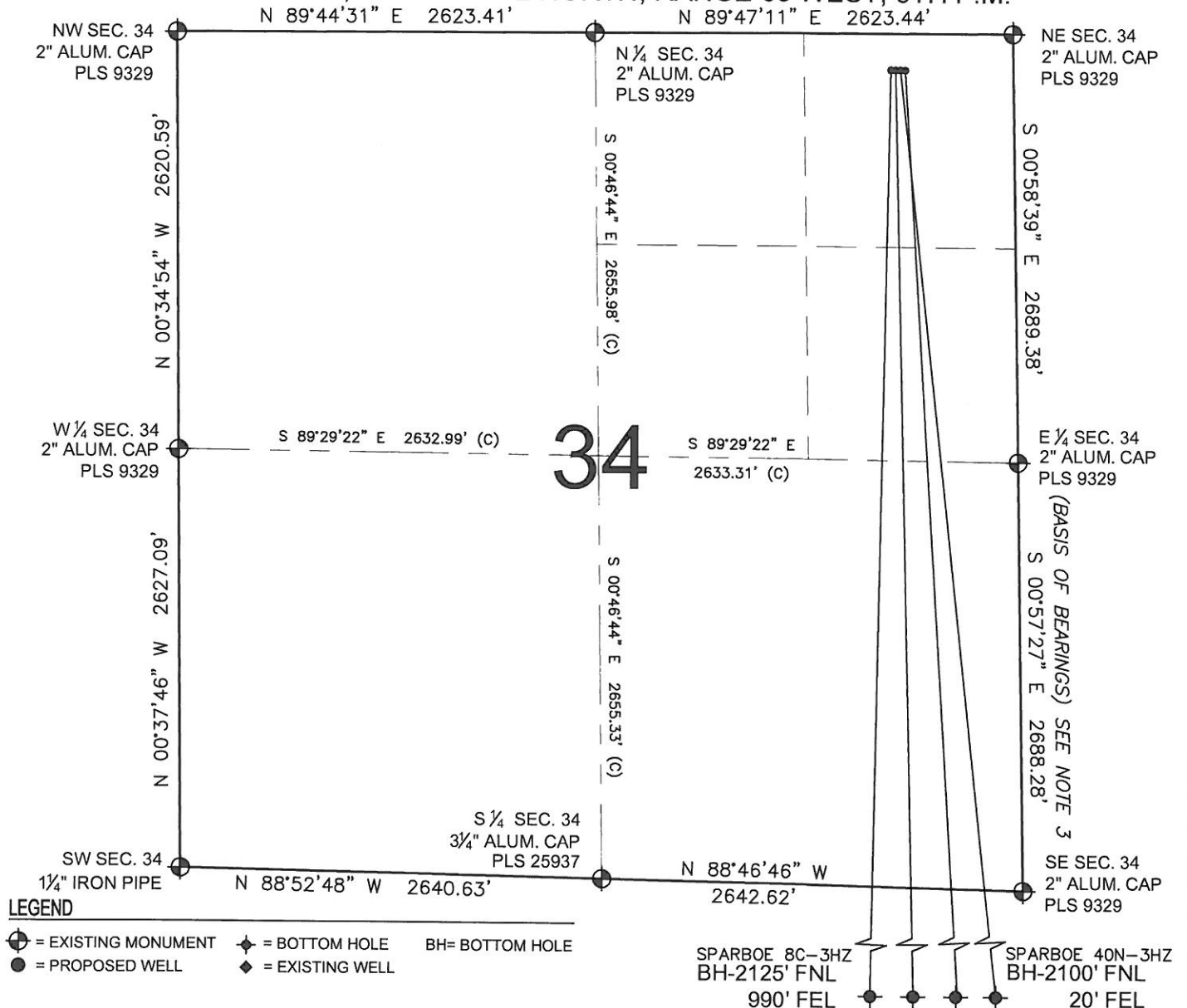


# PAD DRAWING: SPARBOE 4 PAD NENE

SECTION 34, TOWNSHIP 2 NORTH, RANGE 65 WEST, 6TH P.M.



## NOTES:

- THIS FIELD SURVEY CONFORMS TO THE MINIMUM STANDARDS SET BY THE C.O.G.C.C., RULE NO. 215
- HORIZONTAL POSITIONS AND ORTHOMETRIC ELEVATIONS SHOWN AT THE WELL HEAD, ARE BASED ON GPS-RTK POSITIONS DERIVED FROM MINIMUM 2-HOUR STATIC OBSERVATIONS CORRECTED BY THE NATIONAL GEODETIC SURVEY ONLINE POSITIONING USER SERVICE, O.P.U.S. DATUM: HORIZONTAL = NAD83/2007, VERTICAL = NAVD88
- THE BASIS OF BEARINGS ARE STATE PLANE COORDINATE SYSTEM GRID BEARINGS SHOWN HEREON BETWEEN THE DESCRIBED THE MONUMENTS SHOWN HEREON.
- GRID DISTANCES ARE SHOWN, AS MEASURED IN THE FIELD, WITH TIES TO WELLS MEASURED PERPENDICULAR TO SECTION LINES.

## NOTES:

- SPARBOE 8C-3HZ TO BE AT 228' FNL, 769' FEL.
- BOTTOM HOLE AT 2125' FNL & 990' FEL, SEC. 3, T1N, R65W.
- SPARBOE 8N-3HZ TO BE AT 228' FNL, 739' FEL.
- BOTTOM HOLE AT 2116' FNL & 660' FEL, SEC. 3, T1N, R65W.
- SPARBOE 40C-3HZ TO BE AT 229' FNL, 679' FEL.
- BOTTOM HOLE AT 2108' FNL & 330' FEL, SEC. 3, T1N, R65W.
- SPARBOE 40N-3HZ TO BE AT 229' FNL, 709' FEL.
- BOTTOM HOLE AT 2100' FNL & 20' FEL, SEC. 3, T1N, R65W.

PREPARED BY:

**PFS**

Petroleum Field Services, LLC  
1801 W. 13th Ave.  
Denver, CO 80204



KERR-MCGEE OIL & GAS ONSHORE LP

FIELD DATE:  
03-15-12

DRAWING DATE:  
03-27-12

BY:  
DA

PAD NAME:  
SPARBOE 4 PAD NENE

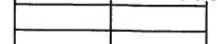
SURFACE LOCATION:

WELD COUNTY, COLORADO

NE 1/4 NE 1/4, SEC. 34, T2N, R65W, 6TH P.M.



0 500 1000



SCALE: 1"=1000'