

WELL LOCATION

2011 2 1/2" Alum. Cap
0.1' Above Ground
Lot: 39.651936°
Long: 104.547253°

T5S, R64W, 6th P.M.
N88°48'11"W - 2638.19' (Meas.)
N88°48'43"W - 2638.26' (Meas.)
1996 2 3/4" Alum. Cap
Flush With Ground
Lot: 39.651642°
Long: 104.528522°

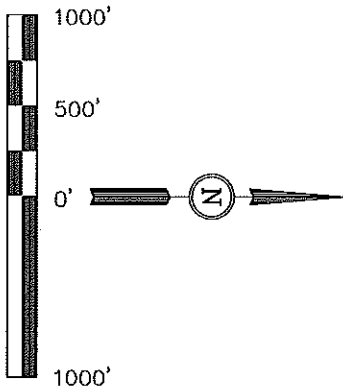
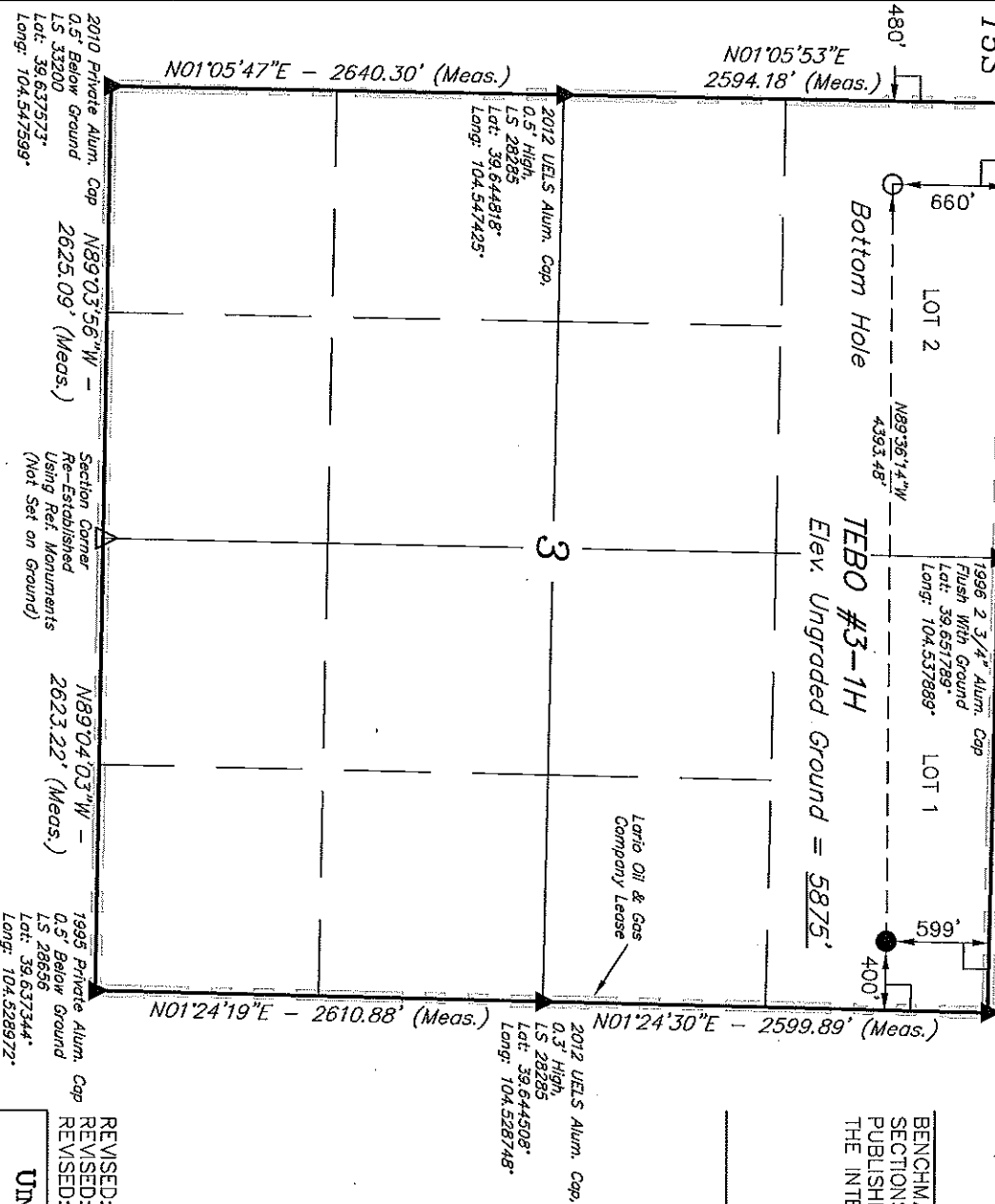
Well location, TEBO #3-1H, located as shown in
LOT 1 of Section 3, T5S, R64W, 6th P.M.,
Arapahoe County, Colorado.

BASIS OF ELEVATION

BENCHMARK 374 LOCATED ON THE SECTION LINE BETWEEN
SECTIONS 12 & 13, T5S, R64W, 6th P.M., TAKEN FROM 1988
PUBLISHED DATUM BY THE UNITED STATES DEPARTMENT OF
THE INTERIOR, GEOLOGICAL SURVEY AS BEING 6034.61 FEET.

BASIS OF BEARINGS

BASIS OF BEARINGS IS A C.P.S. OBSERVATION.



CERTIFICATE

THIS IS TO CERTIFY THAT THE ABOVE PLAT WAS PREPARED FROM
FIELD NOTES OF ACTUAL SURVEYS MADE BY ME OR UNDER MY
SUPERVISION AND THAT THE SAME ARE TRUE AND CORRECT TO THE
BEST OF MY KNOWLEDGE AND BELIEF.

REVISED: 05-31-12 B.D.H.
REVISED: 05-07-12 W.M.
REVISED: 03-27-12

REGISTERED AND EXPIRATION
DATE OF REGISTRATION: 05-31-12
STATE OF COLORADO

UTAH ENGINEERING & LAND SURVEYING
86 SOUTH 200 EAST - VERNAL, UTAH 84078
(435) 789-1017

SCALE: 1" = 1000'
DATE SURVEYED: 02-22-12
DATE DRAWN: 03-06-12

PARTY: D.S. K.H. A.W.
REFERENCES: G.L.O. PLAT
WEATHER: COLD
FILE: ConocoPhillips Company

LEGEND:

- = 90° SYMBOL.
- = PROPOSED WELL HEAD.
- ▲ = SECTION CORNERS LOCATED.

NAD 83 (TARGET BOTTOM HOLE)	NAD 83 (SURFACE LOCATION)
LATITUDE = 39.3970038° (39.650106)	LATITUDE = 39.3970007° (39.650019)
LONGITUDE = 104.324418° (104.545606)	LONGITUDE = 104.314798° (104.529994)
NAD 27 (TARGET BOTTOM HOLE)	NAD 27 (SURFACE LOCATION)
LATITUDE = 39.3970043° (39.650119)	LATITUDE = 39.3970012° (39.650033)
LONGITUDE = 104.324230° (104.545083)	LONGITUDE = 104.314610° (104.529472)

PDOP = 1.7

2011 2 1/2" Alum. Cap
0.1' Above Ground
Lot: 39.651936"
Long: 104.547253"

SECTION BREAKDOWN T5S, R64W, 6th P.M.

1996 2 3/4" Alum. Cap
Flush With Ground
Lot: 39.651642"
Long: 104.528522"

Well location, TEB0 #3-1H, located as shown in
the NE 1/4 NE 1/4 of Section 3, T5S, R64W, 6th
P.M., Arapahoe County, Colorado.

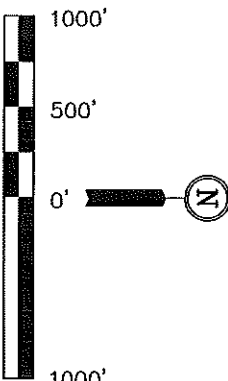
BASIS OF ELEVATION

BENCHMARK 374 LOCATED ON THE SECTION LINE BETWEEN
SECTIONS 12 & 13, T5S, R64W, 6th P.M., TAKEN FROM 1988
PUBLISHED DATUM BY THE UNITED STATES DEPARTMENT OF
THE INTERIOR, GEOLOGICAL SURVEY AS BEING 6054.61 FEET.
BASIS OF BEARINGS

BASIS OF BEARINGS IS A G.P.S. OBSERVATION.

ACREAGES

LEASE	OWNER	ACRES
A	STEPHEN D. TEB0	632.3
TOTAL GROSS ACRES		632.3



CERTIFICATE

THIS IS TO CERTIFY THAT THE ABOVE PLATS WERE PREPARED FROM
FIELD NOTES OF ACTUAL SURVEYS MADE BY ME OR UNDER MY
SUPERVISION AND THAT THE SAME ARE TRUE AND CORRECT TO THE
BEST OF MY KNOWLEDGE AND BELIEF.

REVISED: 06-26-12 J.J.
REVISED: 05-31-12 B.D.H.
REVISED: 05-07-12 W.M.
REVISED: 03-27-12

REGISTERED LAND SURVEYOR
REGISTRATION NO. 12345
STATE OF COLORADO
06-28-12

UTIAH ENGINEERING & LAND SURVEYING
85 SOUTH 200 EAST - VERNAL, UTAH 84078

(435) 789-1017

SCALE 1" = 1000'

SCALE	DATE SURVEYED:	DATE DRAWN:
1" = 1000'	02-22-12	03-06-12

PARTY	REFERENCES
D.S. K.H. A.W.	G.L.O. PLAT

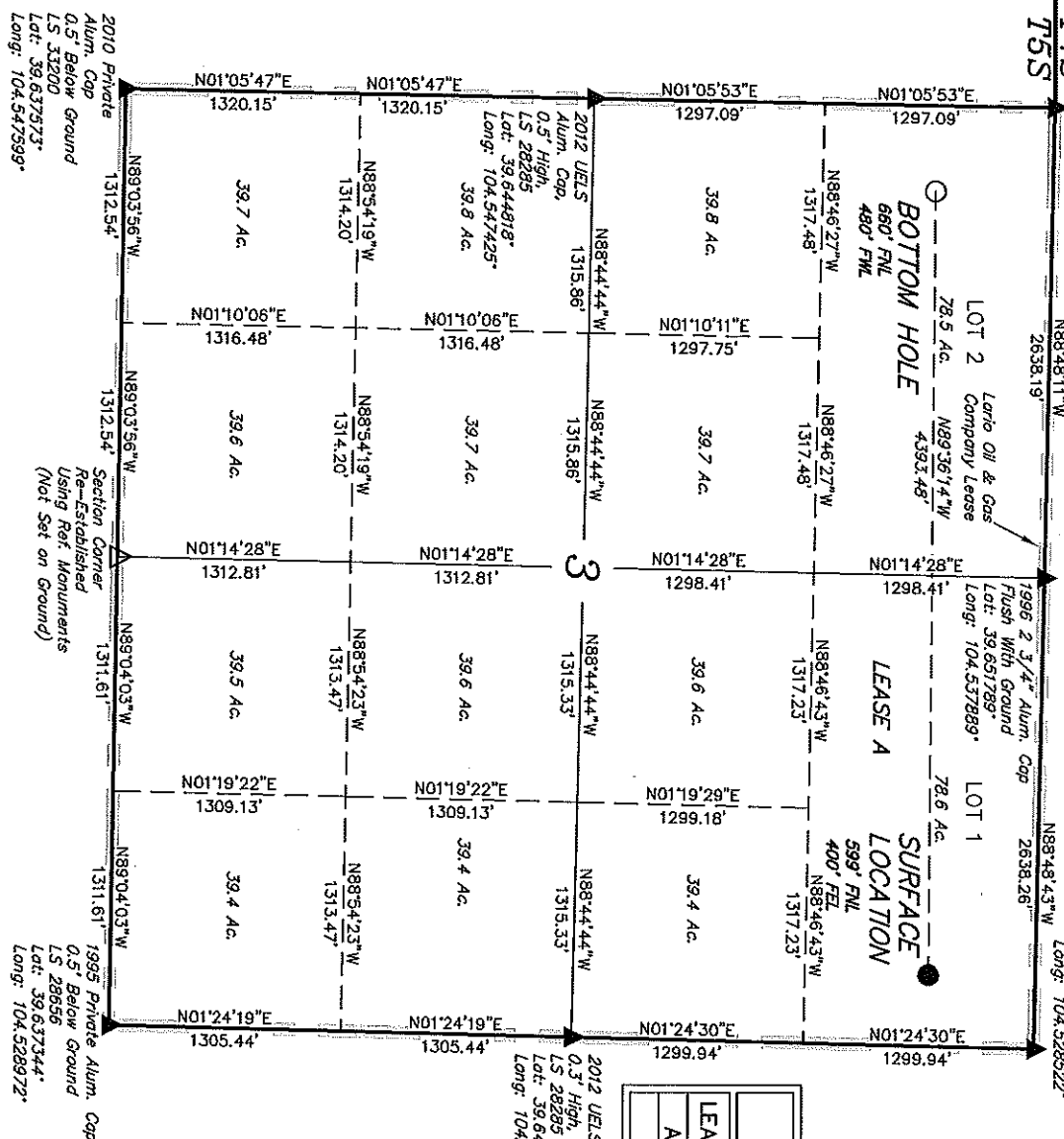
WEATHER	FILE
COLD	ConocoPhillips Company

LEGEND:

- 90° SYMBOL
- PROPOSED WELL HEAD.
- SECTION CORNERS LOCATED.

NAD 83 (TARGET BOTTOM HOLE)	NAD 83 (SURFACE LOCATION)
LATITUDE = 39°39'00.38" (39.650106)	LATITUDE = 39°39'00.07" (39.650019)
LONGITUDE = 104°32'44.18" (104.545606)	LONGITUDE = 104°31'47.98" (104.529994)
NAD 27 (TARGET BOTTOM HOLE)	NAD 27 (SURFACE LOCATION)
LATITUDE = 39°39'00.43" (39.650119)	LATITUDE = 39°39'00.12" (39.650033)
LONGITUDE = 104°32'42.30" (104.545083)	LONGITUDE = 104°31'46.10" (104.529472)

PDOP = 1.7



UINTAH ENGINEERING & LAND SURVEYING
85 So. 200 East * Vernal, Utah 84078 * (435) 789-1017