

**BILL BARRETT CORPORATION**

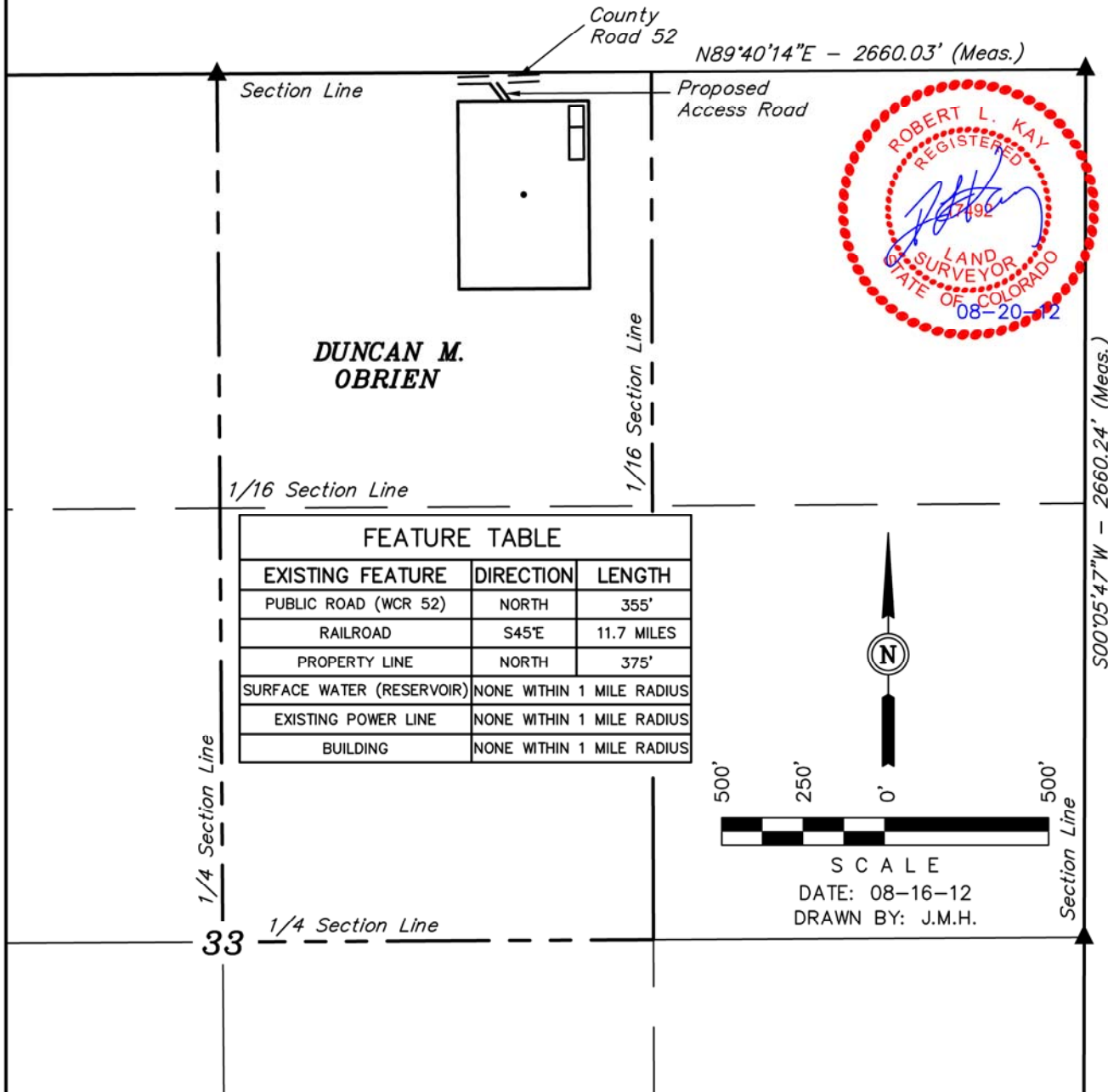
LOCATION DRAWING FOR

ANSCHUTZ OBIEN #5-61-33-57N

SECTION 33, T5N, R61W, 6th P.M.

375' FNL 1720' FEL

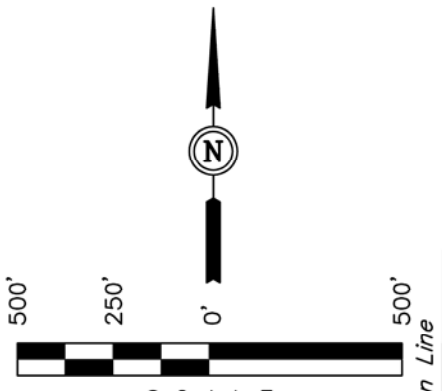
**FIGURE #5**



**DUNCAN M. OBIEN**



| FEATURE TABLE             |                           |            |
|---------------------------|---------------------------|------------|
| EXISTING FEATURE          | DIRECTION                 | LENGTH     |
| PUBLIC ROAD (WCR 52)      | NORTH                     | 355'       |
| RAILROAD                  | S45°E                     | 11.7 MILES |
| PROPERTY LINE             | NORTH                     | 375'       |
| SURFACE WATER (RESERVOIR) | NONE WITHIN 1 MILE RADIUS |            |
| EXISTING POWER LINE       | NONE WITHIN 1 MILE RADIUS |            |
| BUILDING                  | NONE WITHIN 1 MILE RADIUS |            |



SCALE  
DATE: 08-16-12  
DRAWN BY: J.M.H.

**PLANT COMMUNITY**

DISTURBED GRASSLAND

NATIVE GRASSLAND

SHRUB LAND

PLAINS RIPARIAN

MOUNTAIN RIPARIAN

FOREST LAND

WETLANDS AQUATIC

ALPINE

OTHER (Describe): \_\_\_\_\_

**CURRENT LAND USE**

CROP LAND:  IRRIGATED  DRY LAND  IMPROVED PASTURE  HAY MEADOW  CRP

NON-CROP LAND:  RANGELAND  TIMBER  RECREATIONAL  OTHER (Describe) \_\_\_\_\_

SUBDIVIDED:  INDUSTRIAL  COMMERCIAL  RESIDENTIAL \_\_\_\_\_

**FUTURE LAND USE**

CROP LAND:  IRRIGATED  DRY LAND  IMPROVED PASTURE  HAY MEADOW  CRP

NON-CROP LAND:  RANGELAND  TIMBER  RECREATIONAL  OTHER (Describe) \_\_\_\_\_

SUBDIVIDED:  INDUSTRIAL  COMMERCIAL  RESIDENTIAL \_\_\_\_\_