

T6N, R67W, 6th P.M.

GREAT WESTERN OIL & GAS COMPANY

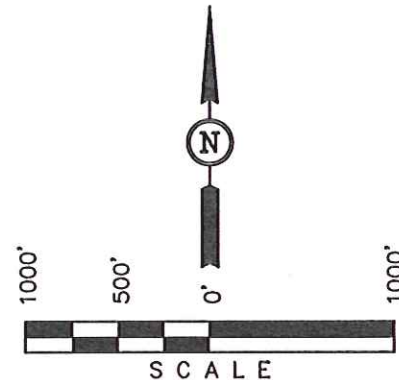
Well location, GREENSPIRE FD #23-H, located as shown in the NW 1/4 NE 1/4 of Section 16, T6N, R67W, 6th P.M., Weld County, Colorado.

### BASIS OF ELEVATION

USGS COOPERATIVE BASE NETWORK CONTROL STATION, DESIGNATION 'VERMILYEA'. NGS DATA SHEET LISTS THE NAVD 88 ELEVATION AS BEING 5026 FEET

### BASIS OF BEARINGS

BASIS OF BEARINGS IS A G.P.S. OBSERVATION.



### CERTIFICATE

THIS IS TO CERTIFY THAT THE ABOVE PLAT WAS PREPARED FROM FIELD NOTES OF ACTUAL SURVEYS MADE BY ME OR UNDER MY SUPERVISION AND THAT THE SAME ARE TRUE AND CORRECT TO THE BEST OF MY KNOWLEDGE AND BELIEF.

REGISTERED LAND SURVEYOR  
REGISTRATION NO. 17492  
STATE OF COLORADO

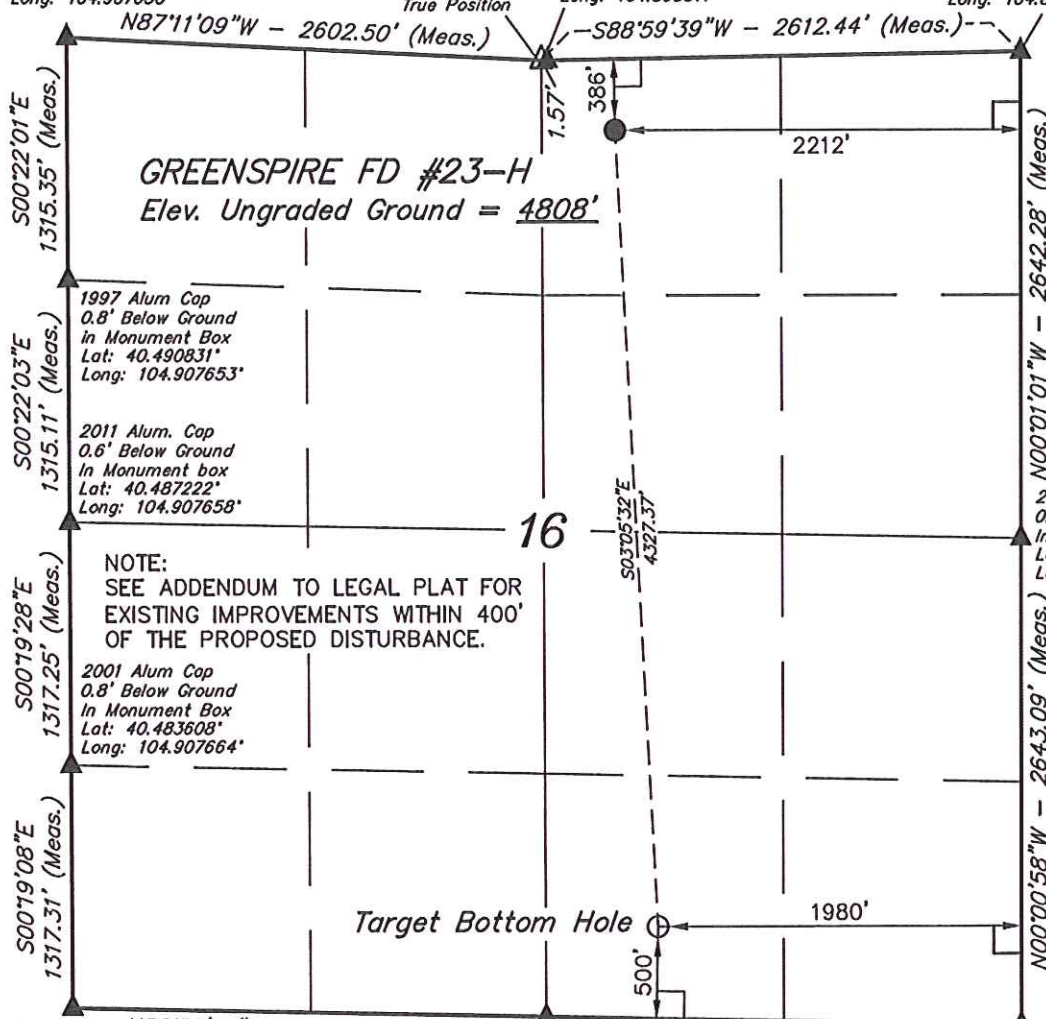
REVISED: 07-12-12

**UINTAH ENGINEERING & LAND SURVEYING**  
85 SOUTH 200 EAST - VERNAL, UTAH 84078  
(435) 789-1017

1998 Alum Cap  
0.8' Below Ground  
In Monument Box  
Lat: 40.494442°  
Long: 104.907650°

W.C. Private Alum.  
Cap 0.2' High,  
Lat: 40.494039°  
Long: 104.898311°

1993 Private Alum  
Cap 0.1' Below Ground  
Lat: 40.494111°  
Long: 104.888919°



Alum. Cap, N88°52'14"W - 2591.34' (Meas.)  
0.2' Below Ground,  
In Monument Box  
Lat: 40.479994°  
Long: 104.907672°

1993 Alum. Cap  
0.8' Below Ground  
In Monument Box  
Lat: 40.479800°  
Long: 104.898364°

1993 Alum. Cap  
0.8' Below Ground  
In Monument Box  
Lat: 40.479608°  
Long: 104.889058°

### LEGEND:

- △ = SECTION CORNERS RE-ESTABLISHED. (Not Set on Ground.)
- └ = 90° SYMBOL
- = PROPOSED WELL HEAD.
- ▲ = SECTION CORNERS LOCATED.

PDOP = 2.5

NAD 83 (TARGET BOTTOM HOLE)	NAD 83 (SURFACE LOCATION)
LATITUDE = 40°28'52.06" (40.481128)	LATITUDE = 40°29'34.76" (40.492989)
LONGITUDE = 104°53'46.17" (104.896158)	LONGITUDE = 104°53'48.78" (104.896883)
NAD 27 (TARGET BOTTOM HOLE)	NAD 27 (SURFACE LOCATION)
LATITUDE = 40°28'52.13" (40.481147)	LATITUDE = 40°29'34.83" (40.493008)
LONGITUDE = 104°53'44.27" (104.895631)	LONGITUDE = 104°53'46.88" (104.896356)

SCALE 1" = 1000'	DATE SURVEYED: 06-15-12	DATE DRAWN: 06-25-12
PARTY Z.B. A.G. J.W.	REFERENCES G.L.O. PLAT	
WEATHER WARM	FILE GREAT WESTERN OIL & GAS COMPANY	