

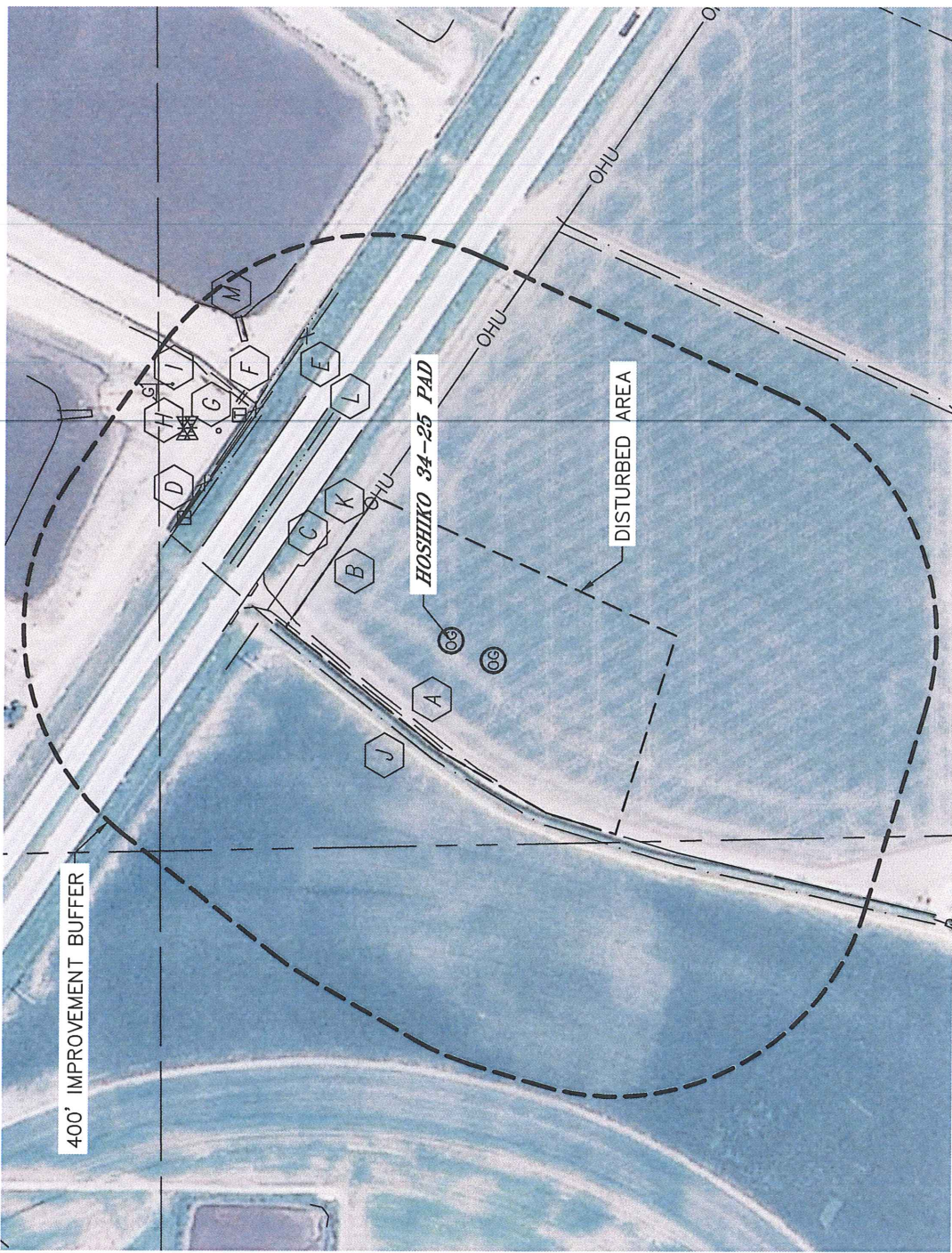


Lat40°, Inc. 1635 Foxtrail Drive, Suite 325 Loveland, CO 970-776-3321

LOCATION DRAWING

HOSHIKO 34-25 PAD

SECTION: 25
TOWNSHIP: 5N
RANGE: 64W



IMPROVEMENTS:

(MEASURED FROM THE PROPOSED HOSHIKO 34-25 WELL LOCATION)

| | | | |
|--------------|--|--------------|---------------------------------|
| <div>A</div> | FIELD ROAD 130' NW | <div>J</div> | CANAL 142' NW |
| <div>B</div> | OVERHEAD UTILITY LINE 220' NE, 443' NE | <div>K</div> | DITCH 249' NE, 449' NE, 553' NE |
| <div>C</div> | HIGHWAY 34 296' NE | <div>L</div> | BARROW DITCH 346' NE, 435' NE |
| <div>D</div> | TELEPHONE PEDESTAL 449' NE, 473' NE | <div>M</div> | LAGOON 588' NE |
| <div>E</div> | FENCE 446' NE | | |
| <div>F</div> | CONCRETE STRUCTURE 465' NE, 555' NE | | |
| <div>G</div> | IRRIGATION FILL STATION 479' NE | | |
| <div>H</div> | IRRIGATION VALVE 541' NE, 523' NE | | |
| <div>I</div> | GAS MARKER 579' NE | | |

NEAREST: BUILDING 721' NW (OUT-BUILDING), PUBLIC ROAD 296' NE (HWY 34),
ABOVE GROUND UTILITY 220' NE, RAILROAD 4330' NE, PROPERTY LINE 150' NW

DATE: 7/26/2012
PROJECT#: 2012098