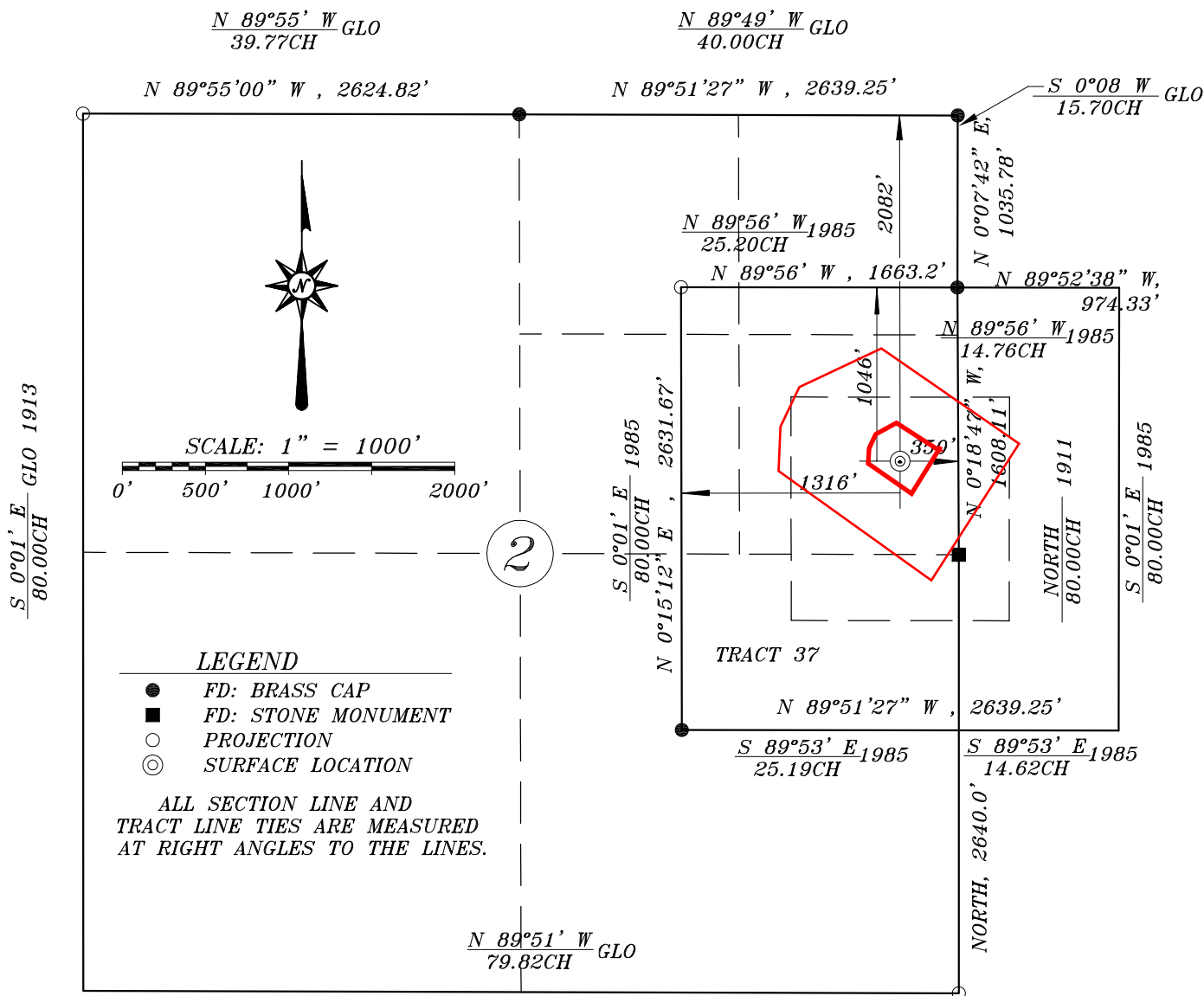


SECTION 2, T 10 N, R 89 W, 6TH P.M., MOFFAT COUNTY, COLORADO



NOTE:

BASIS OF BEARING IS TRUE NORTH AS DETERMINED BY G.P.S. USING THE HERE KEY FOR INITIAL CONTROL. THE PDOP FOR THE INITIAL CONTROL WAS OBSERVED BY DAN SIEK TO BE < 3.0 ON MAY 17, 2012

SURFACE USE OF LAND IS HIGH MOUNTAIN MEADOW RANGELAND.

NAD COORDINATES ARE IN CO. NORTH ZONE,
EL. DATUM = SPOT ELEV. ON USGS TOPO MAP BUCK POINT CO. 2000

SURFACE LOCATION: 2082' FNL 350' FEL		ELEVATION: 8265.7'
DATUM: NAD 83	DATUM: NAD 27	REFERENCE POINTS
LAT: 40.852625°	LAT: 40.852763°	200' NORTH, EL. = 8254.9'
LONG: 107.336557°	LONG: 107.335905°	200' SOUTH, EL. = 8278.5'
NORTH: 1558754.7'	NORTH: 558753.1'	200' EAST, EL. = 8257.0'
EAST: 2491952.0'	EAST: 1492109.0'	200' WEST, EL. = 8270.5'

SURVEYOR'S CERTIFICATE:

I, DANIEL A. SIEK, OF CASPER, WYOMING DO HEREBY CERTIFY THAT IN ACCORDANCE WITH A REQUEST FROM DUNCAN SHEPHERD OF DENVER, COLORADO, FOR PETROLEUM RESOURCE MGMT, I MADE A SURVEY IN THE MONTH OF MAY, 2012, FOR THE LOCATION AND ELEVATION OF THE ABOVE WELL SITE LOCATED IN THE SE/4 OF THE NE/4 OF SECTION 2, TOWNSHIP 10 NORTH, RANGE 89 WEST OF THE 6TH PRINCIPAL MERIDIAN, MOFFAT COUNTY, COLORADO.



WELL LOCATION PLAT
PETROLEUM RESOURCE MANAGEMENT
PRM SHEEHAN 2 WELL NO. 4-2
LOCATED IN THE SE/4 OF THE NE/4,
SECTION 2, T 10 N, R 89 W, 6TH P.M.,
MOFFAT COUNTY, COLORADO

PREPARED BY SIEK SURVEYING SERVICE
CASPER, WYOMING 307-266-6829
DATE: 05-18-12 REV: 06-22-12
JOB NO. 37-12-#4-2_WL