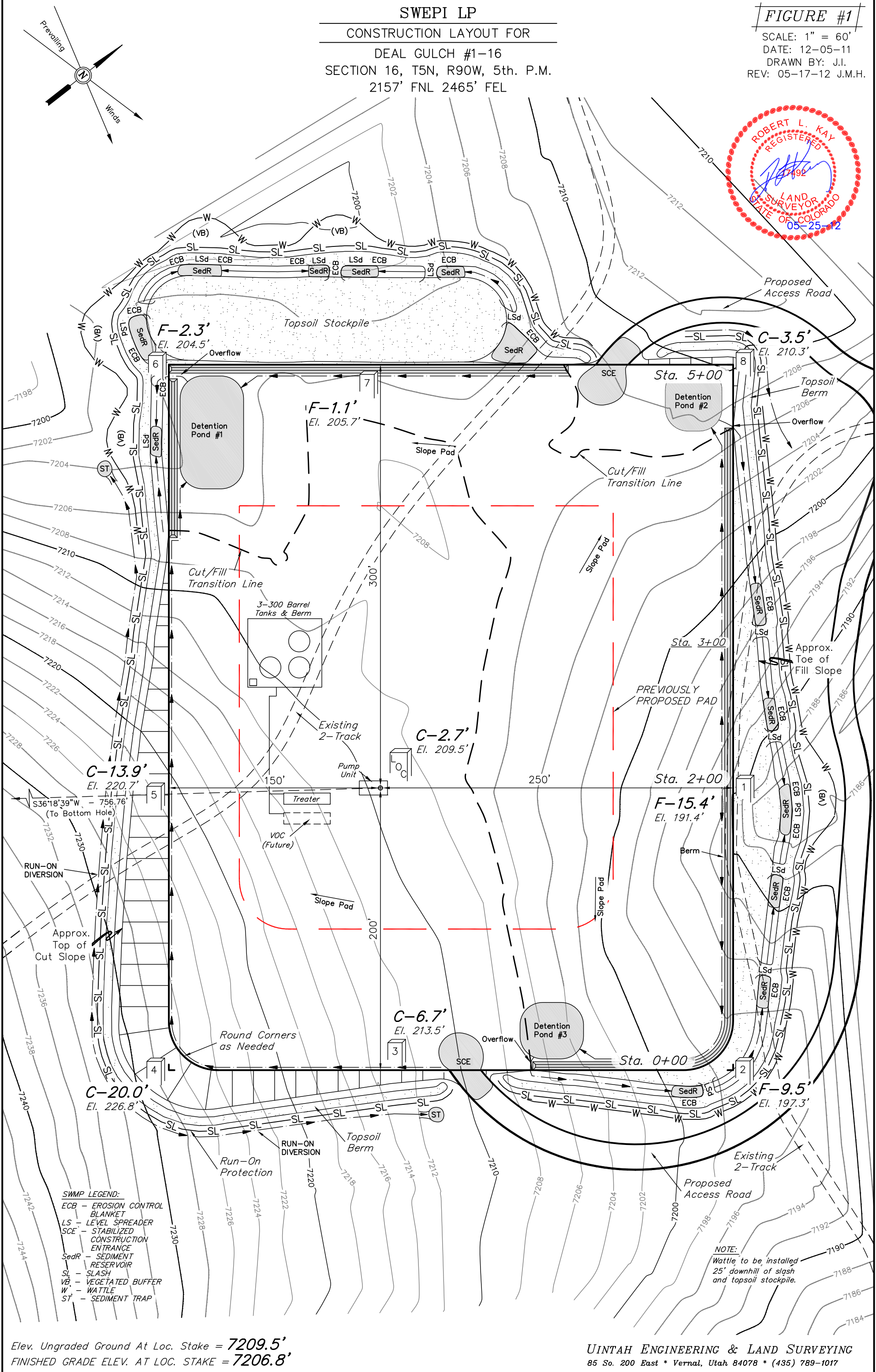
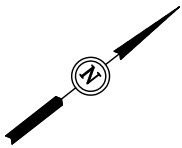


SWEPI LP
CONSTRUCTION LAYOUT FOR
DEAL GULCH #1-16
SECTION 16, T5N, R90W, 5th. P.M.
2157' FNL 2465' FEL

FIGURE #1

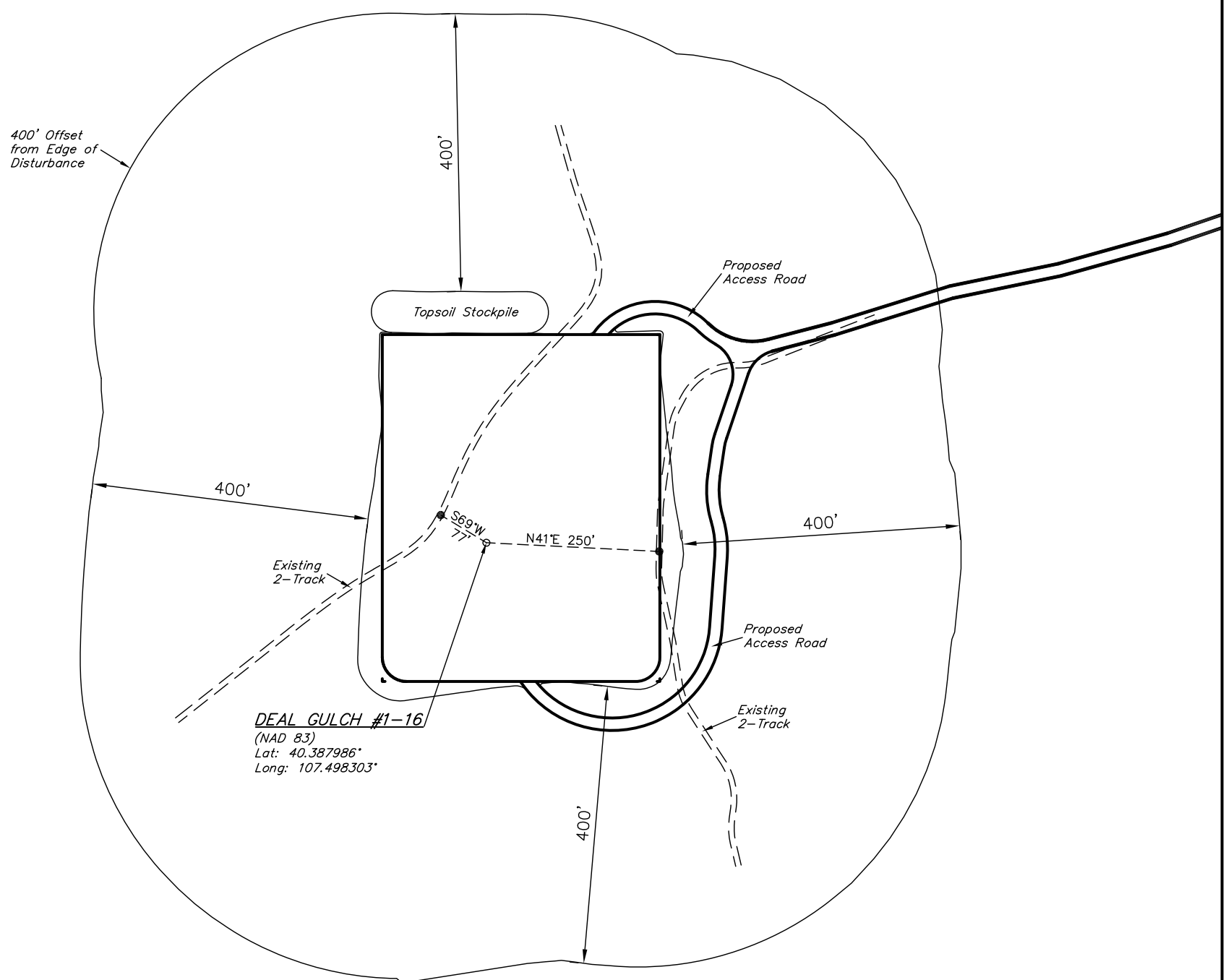
SCALE: 1" = 60'
DATE: 12-05-11
DRAWN BY: J.I.
REV: 05-17-12 J.M.H.





SWEPI LP
ADDENDUM TO LEGAL PLAT FOR
DEAL GULCH #1-16
SECTION 16, T5N, R90W, 5th. P.M.
2157' FNL 2465' FEL

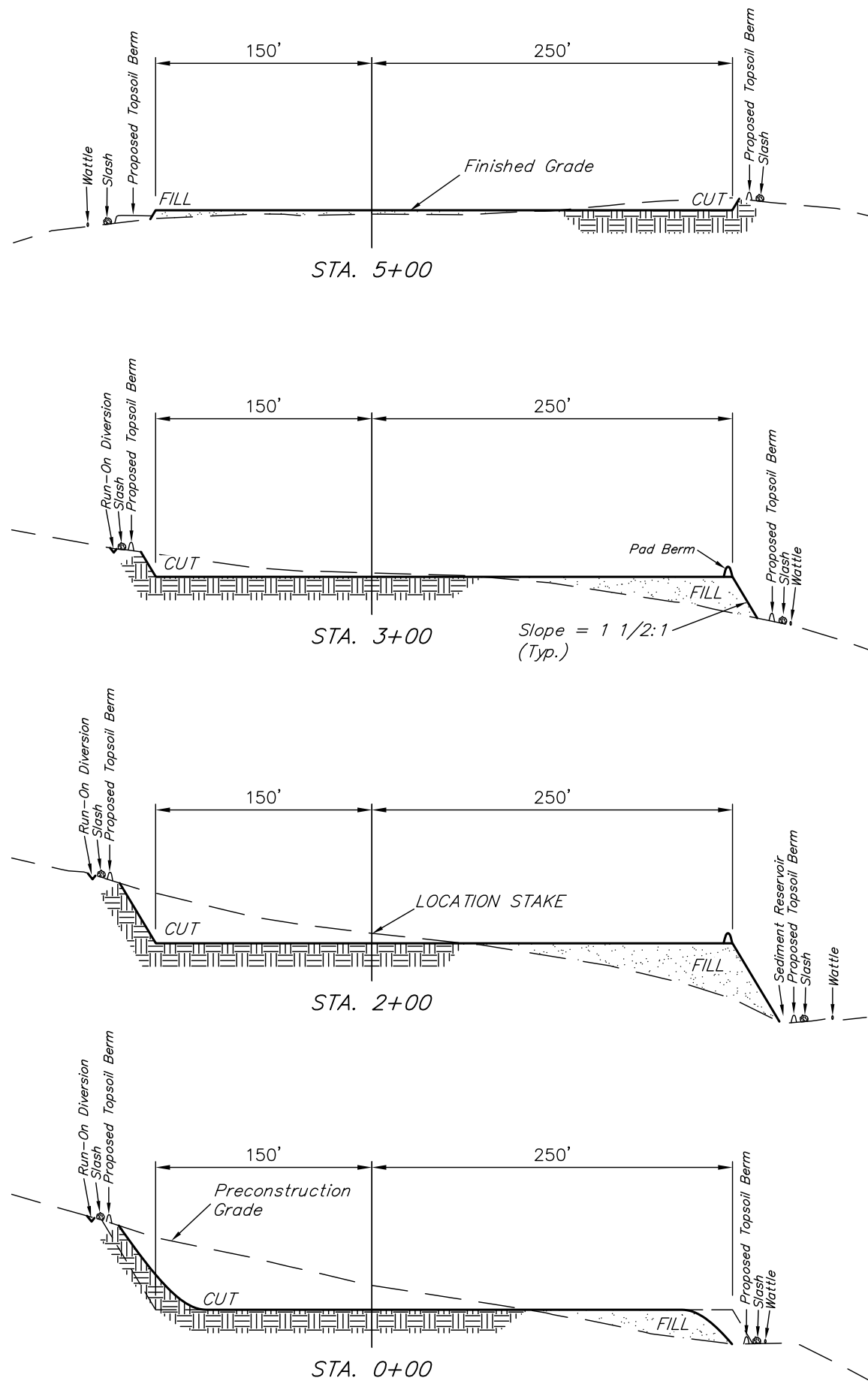
SCALE: 1" = 200'
DATE: 12-05-11
DRAWN BY: J.I.
REV: 05-17-12 J.M.H.



1" = 40'
X-Section
Scale
1" = 100'
DATE: 12-05-11
DRAWN BY: J.I.
REV: 05-17-12 J.M.H.

SWEPI LP
CONSTRUCTION LAYOUT CROSS SECTIONS FOR
DEAL GULCH #1-16
SECTION 16, T5N, R90W, 5th. P.M.
2157' FNL 2465' FEL

FIGURE #2



NOTE:
Topsoil should not be
Stripped Below Finished
Grade on Substructure Area.

* NOTE:
FILL QUANTITY INCLUDES
5% FOR COMPACTION

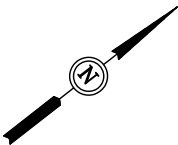
APPROXIMATE YARDAGES

(6") Topsoil Stripping = 4,140 Cu. Yds.
Remaining Location = 19,450 Cu. Yds.
TOTAL CUT = 23,590 CU.YDS.
FILL = 19,450 CU.YDS.

EXCESS MATERIAL = 4,140 Cu. Yds.
Topsoil = 4,140 Cu. Yds.
EXCESS UNBALANCE = 0 Cu. Yds.
(After Interim Rehabilitation)

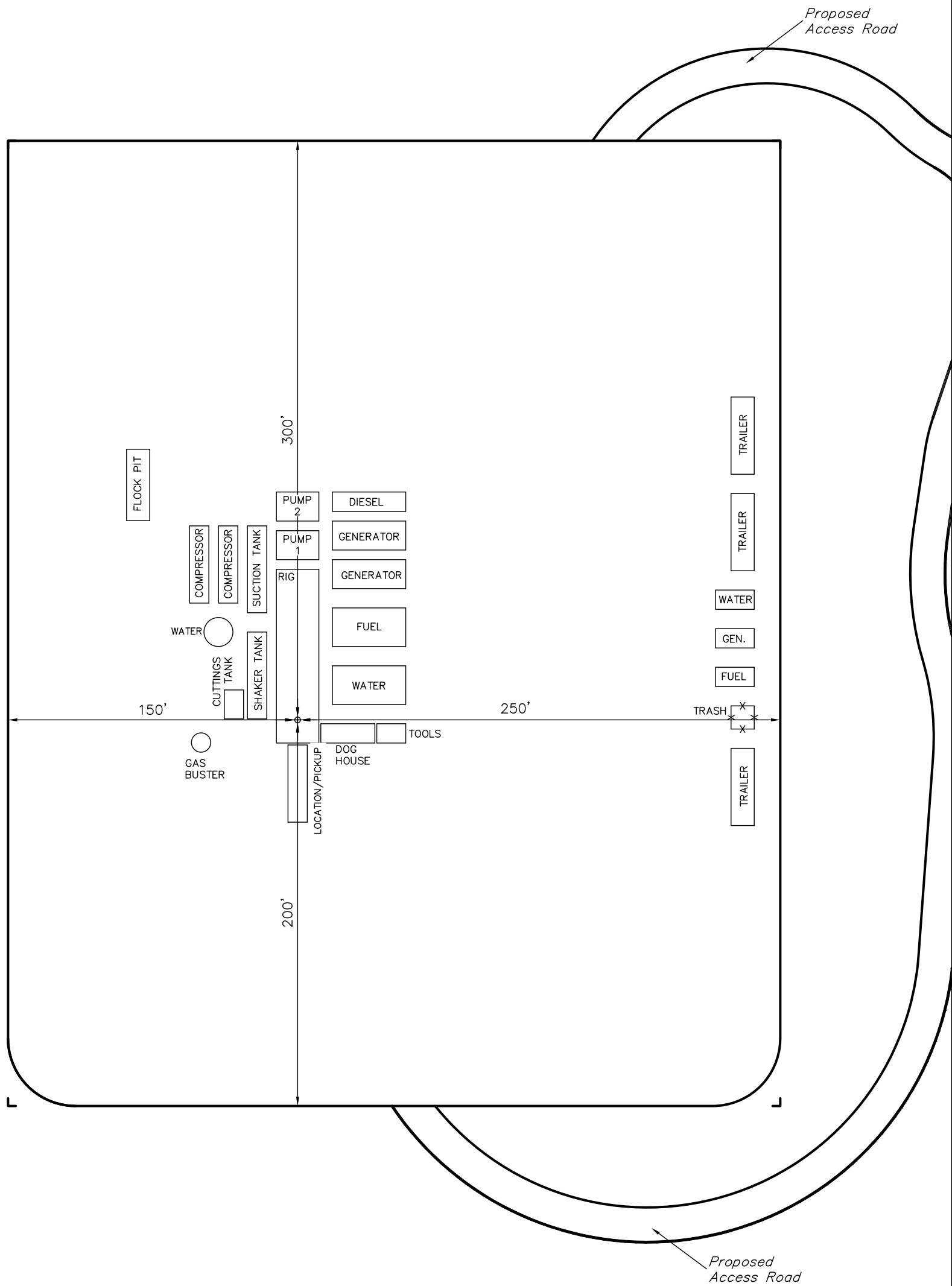
APPROXIMATE ACREAGES
WELL SITE DISTURBANCE = ± 6.566 ACRES
ACCESS ROAD DISTURBANCE = ± 3.298 ACRES
TOTAL = ± 9.864 ACRES

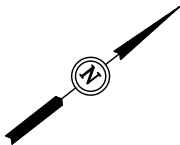
UINTAH ENGINEERING & LAND SURVEYING
85 So. 200 East * Vernal, Utah 84078 * (435) 789-1017



SWEPI LP
TYPICAL RIG LAYOUT FOR
DEAL GULCH #1-16
SECTION 16, T5N, R90W, 5th. P.M.
2157' FNL 2465' FEL

FIGURE #3
SCALE: 1" = 50'
DATE: 12-05-11
DRAWN BY: J.I.
REV: 05-17-12 J.M.H.

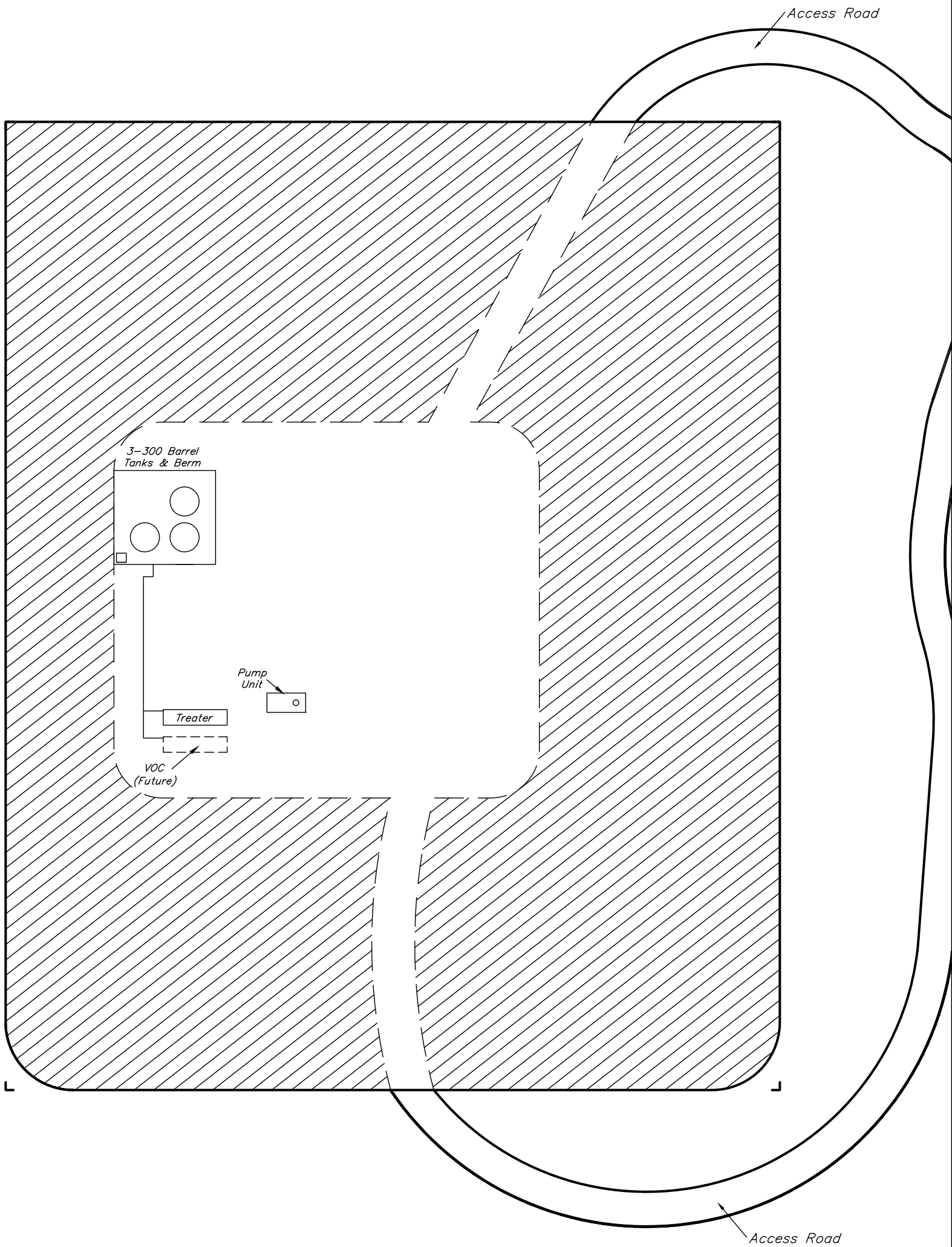




SWEPI LP
RECLAMATION DIAGRAM FOR
DEAL GULCH #1-16
SECTION 16, T5N, R90W, 5th. P.M.
2157' FNL 2465' FEL

FIGURE #4

SCALE: 1" = 50'
DATE: 12-05-11
DRAWN BY: J.I.
REV: 05-07-12 J.M.H.



APPROXIMATE ACREAGES
UN-RECLAIMED = ± 1.123 ACRES

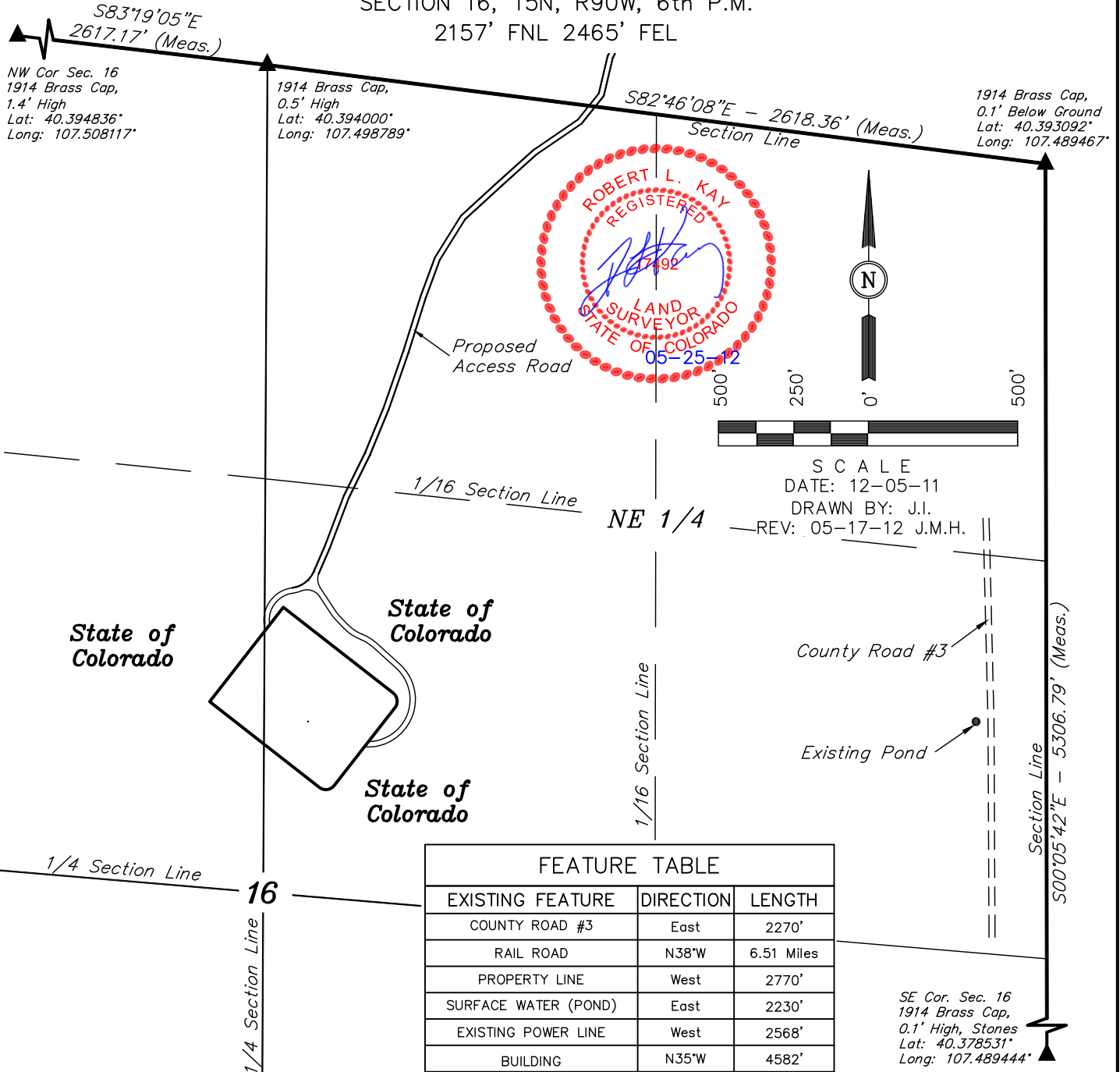
RECLAIMED AREA

SWEPI LP

LOCATION DRAWING FOR

DEAL GULCH #1-16
SECTION 16, T5N, R90W, 6th P.M.
2157' FNL 2465' FEL

FIGURE #5



FEATURE TABLE

EXISTING FEATURE	DIRECTION	LENGTH
COUNTY ROAD #3	East	2270'
RAIL ROAD	N38°W	6.51 Miles
PROPERTY LINE	West	2770'
SURFACE WATER (POND)	East	2230'
EXISTING POWER LINE	West	2568'
BUILDING	N35°W	4582'

PLANT COMMUNITY

- ☐ DISTURBED GRASSLAND
- ☐ NATIVE GRASSLAND
- ☐ SHRUB LAND
- ☐ PLAINS RIPARIAN
- ☐ MOUNTAIN RIPARIAN
- ☐ FOREST LAND
- ☐ WETLANDS AQUATIC
- ☐ ALPINE
- ☐ OTHER (Describe): _____

CURRENT LAND USE

- CROP LAND: ☐ IRRIGATED ☐ DRY LAND ☐ IMPROVED PASTURE ☐ HAY MEADOW ☐ CRP
- NON-CROP LAND: ☐ RANGELAND ☐ TIMBER ☐ RECREATIONAL ☐ OTHER (Describe) _____
- SUBDIVIDED: ☐ INDUSTRIAL ☐ COMMERCIAL ☐ RESIDENTIAL _____

FUTURE LAND USE

- CROP LAND: ☐ IRRIGATED ☐ DRY LAND ☐ IMPROVED PASTURE ☐ HAY MEADOW ☐ CRP
- NON-CROP LAND: ☐ RANGELAND ☐ TIMBER ☐ RECREATIONAL ☐ OTHER (Describe) _____
- SUBDIVIDED: ☐ INDUSTRIAL ☐ COMMERCIAL ☐ RESIDENTIAL _____