

The Road to Excellence Starts with Safety

Sold To #: 304535	Ship To #: 2927965	Quote #:	Sales Order #: 9524357
Customer: PDC ENERGY EBUS		Customer Rep: SAILORS, CHAD	
Well Name: Webster		Well #: 22-11	API/UWI #: 05-123-21873
Field:	City (SAP): GREELEY	County/Parish: Weld	State: Colorado
Job Purpose: Recement Service			
Well Type: Producing Well		Job Type: Recement Service	
Sales Person: SIMS, DENNIS		Srvc Supervisor: FANTASIA, JOSEPH	MBU ID Emp #: 485445

Job Personnel

HES Emp Name	Exp Hrs	Emp #	HES Emp Name	Exp Hrs	Emp #	HES Emp Name	Exp Hrs	Emp #
BARNES, BRIAN L	3.5	485204	BULINSKI, MATTHEW J	3.5	483865	CORDOVA, PHILLIP Jared	3.5	519140
FANTASIA, JOSEPH Brandon	3.5	485445	HOLLOWAY, DUSTIN Craig	3.5	504032			

Equipment

HES Unit #	Distance-1 way	HES Unit #	Distance-1 way	HES Unit #	Distance-1 way	HES Unit #	Distance-1 way
10988836C	45 mile	11064046C	45 mile	11142998	45 mile	11398490	45 mile
11527037	45 mile						

Job Hours

Date	On Location Hours	Operating Hours	Date	On Location Hours	Operating Hours	Date	On Location Hours	Operating Hours
5-18-2012	3.5	3.5						

TOTAL Total is the sum of each column separately

Job

Job Times

Formation Name	Formation Depth (MD)	Top	Bottom	Called Out	Date	Time	Time Zone
				On Location	18 - May - 2012	02:30	MST
Form Type			BHST	On Location	18 - May - 2012	06:30	MST
Job depth MD	3250. ft		Job Depth TVD	3250. ft	Job Started	18 - May - 2012	07:06
Water Depth			Wk Ht Above Floor	4. ft	Job Completed	18 - May - 2012	09:15
Perforation Depth (MD)	From		To		Departed Loc	18 - May - 2012	10:00

Well Data

Description	New / Used	Max pressure psig	Size in	ID in	Weight lbm/ft	Thread	Grade	Top MD ft	Bottom MD ft	Top TVD ft	Bottom TVD ft
Open Hole				12.				449.	4000.	.	.
Prouction Casing	Used		4.5	4.052	10.5		J-55	.	8450.	.	.
Surface Casing	Used		8.625	8.097	24.		J-55	.	449.	.	.
Tubing	Unknown		1.25	.671	3.02			.	3350.	.	.

Tools and Accessories

Type	Size	Qty	Make	Depth	Type	Size	Qty	Make	Depth	Type	Size	Qty	Make
Guide Shoe					Packer					Top Plug			
Float Shoe					Bridge Plug					Bottom Plug			
Float Collar					Retainer					SSR plug set			
Insert Float										Plug Container			
Stage Tool										Centralizers			

Miscellaneous Materials

Gelling Agt	Conc	Surfactant	Conc	Acid Type	Qty	Conc	%
Treatment Fld	Conc	Inhibitor	Conc	Sand Type	Size	Qty	

Fluid Data

Stage/Plug #: 1										
Fluid #	Stage Type	Fluid Name	Qty	Qty uom	Mixing Density lbm/gal	Yield ft3/sk	Mix Fluid Gal/sk	Rate bbl/min	Total Mix Fluid Gal/sk	

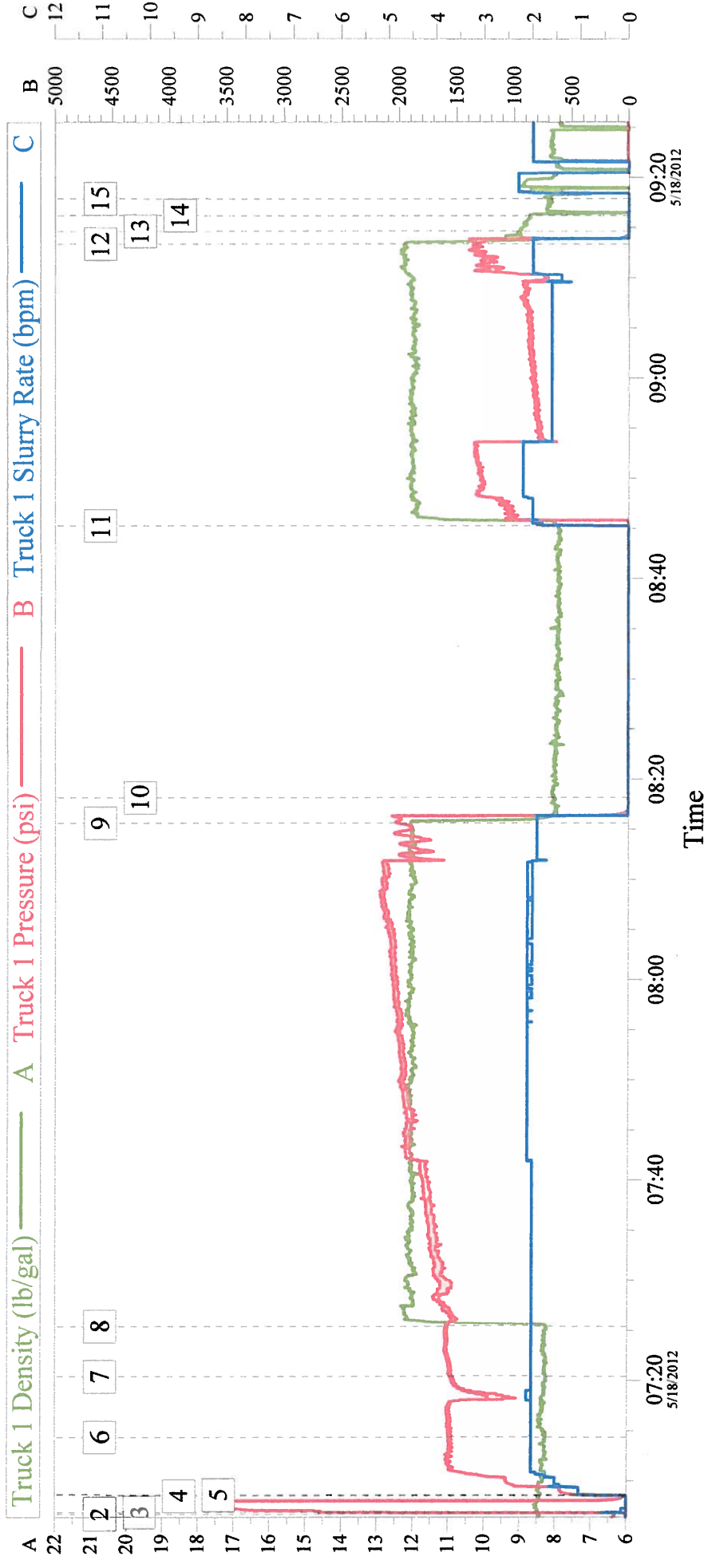
Stage/Plug #: 1									
Fluid #	Stage Type	Fluid Name	Qty	Qty uom	Mixing Density lbm/gal	Yield ft ³ /sk	Mix Fluid Gal/sk	Rate bbl/min	Total Mix Fluid Gal/sk
1	ClayWeb Water Spacer		10.00	bbl	8.33	.0	.0	2.0	
2	MUD FLUSH III	MUD FLUSH III - SBM (528788)	12.00	bbl	8.4	.0	.0	2.0	
3	ClayWeb Water Spacer		10.00	bbl	8.33	.0	.0	2.0	
59.525 gal/Mgal		CLA-WEB - TOTE (101985045)							
4	Varicem 12#	VARICEM (TM) CEMENT (452009)	500.0	sacks	12.	2.18	12.34	2.0	12.34
12.34 Gal		FRESH WATER							
Calculated Values		Pressures		Volumes					
Displacement		Shut In: Instant		Lost Returns	0	Cement Slurry	148	Pad	
Top Of Cement		5 Min		Cement Returns	10	Actual Displacement	2.5	Treatment	
Frac Gradient		15 Min		Spacers	32	Load and Breakdown		Total Job	182.5
Rates									
Circulating	2	Mixing	2	Displacement	2	Avg. Job	2		
Cement Left In Pipe	Amount	0 ft	Reason	Shoe Joint					
Frac Ring # 1 @	ID	Frac ring # 2 @	ID	Frac Ring # 3 @	ID	Frac Ring # 4 @	ID		
The Information Stated Herein Is Correct				Customer Representative Signature					

The Road to Excellence Starts with Safety

Sold To #: 304535	Ship To #: 2927965	Quote #:	Sales Order #: 9524357
Customer: PDC ENERGY EBUS		Customer Rep: SAILORS, CHAD	
Well Name: Webster		Well #: 22-11	API/UWI #: 05-123-21873
Field:	City (SAP): GREELEY	County/Parish: Weld	State: Colorado
Legal Description:			
Lat: N 0 deg. OR N 0 deg. 0 min. 0 secs.		Long: E 0 deg. OR E 0 deg. 0 min. 0 secs.	
Contractor:		Rig/Platform Name/Num:	
Job Purpose: Recement Service			Ticket Amount:
Well Type: Producing Well		Job Type: Recement Service	
Sales Person: SIMS, DENNIS		Srvc Supervisor: FANTASIA, JOSEPH	MBU ID Emp #: 485445

Activity Description	Date/Time	Cht #	Rate bbl/min	Volume bbl		Pressure psig		Comments
				Stage	Total	Tubing	Casing	
Arrive at Location from Service Center	05/18/2012 06:30							
Assessment Of Location Safety Meeting	05/18/2012 06:40							
Start Job	05/18/2012 07:05							
Test Lines	05/18/2012 07:06							PRESSURE TEST LINES TO 3500PSI
Pump Spacer 1	05/18/2012 07:08		2	10			1811.0	10 BBLS WATER WITH CLAYWEB ADDED
Pump Spacer 2	05/18/2012 07:14		2	12			1840.0	12 BBLS MUDFLUSH
Pump Spacer 1	05/18/2012 07:20		2	10			1725.0	10 BBLS WATER WITH CLAYWEB ADDED
Pump Cement	05/18/2012 07:25		2	98			1925.0	250 SKS VARICEM MIXED AT 12 PPG USING SUPPLIED WATER
Pump Displacement	05/18/2012 08:15		2	1.5			1745.0	DISPLACE 1.5 BBLS
Shutdown	05/18/2012 08:18							RIG PULLS 50 JOINTS
Pump Cement	05/18/2012 08:45		2	98			1350.0	128 SKS VARICEM MIXED AT 12 PPG USING SUPPLIED WATER. CEMENT TO SURFACE AT 40 BBLS AWAY. 50 BBLS TOTAL PUMPED. APPROX 10 BBLS CEMENT BACK TO SURFACE.
Shutdown	05/18/2012 09:10							
Pump Displacement	05/18/2012 09:13		2	1.5			1200.0	DISPLACE 1 BBL

PDC WEBSTER 22-11 RECEMENT



Global Event Log

1	Starting Job	06:51:25	2	Start Job	07:06:40	3	Test Lines	07:06:51
4	Pump Spacer 1	07:08:30	5	Pump Spacer 1	07:08:34	6	Pump Spacer 2	07:14:21
7	Pump Spacer 1	07:20:24	8	Pump Cement	07:25:24	9	Pump Displacement	08:15:37
10	Shutdown	08:18:09	11	Pump Cement	08:45:17	12	Pump Displacement	09:13:22
13	End Job	09:14:37	14	Clean Lines	09:16:11	15	Shutdown	09:17:52
16	Ending Job	09:33:06						

Customer: PDC	Job Date: 18-May-2012	Sales Order #: 9524357
Well Description: RECEMENT	UWI:	