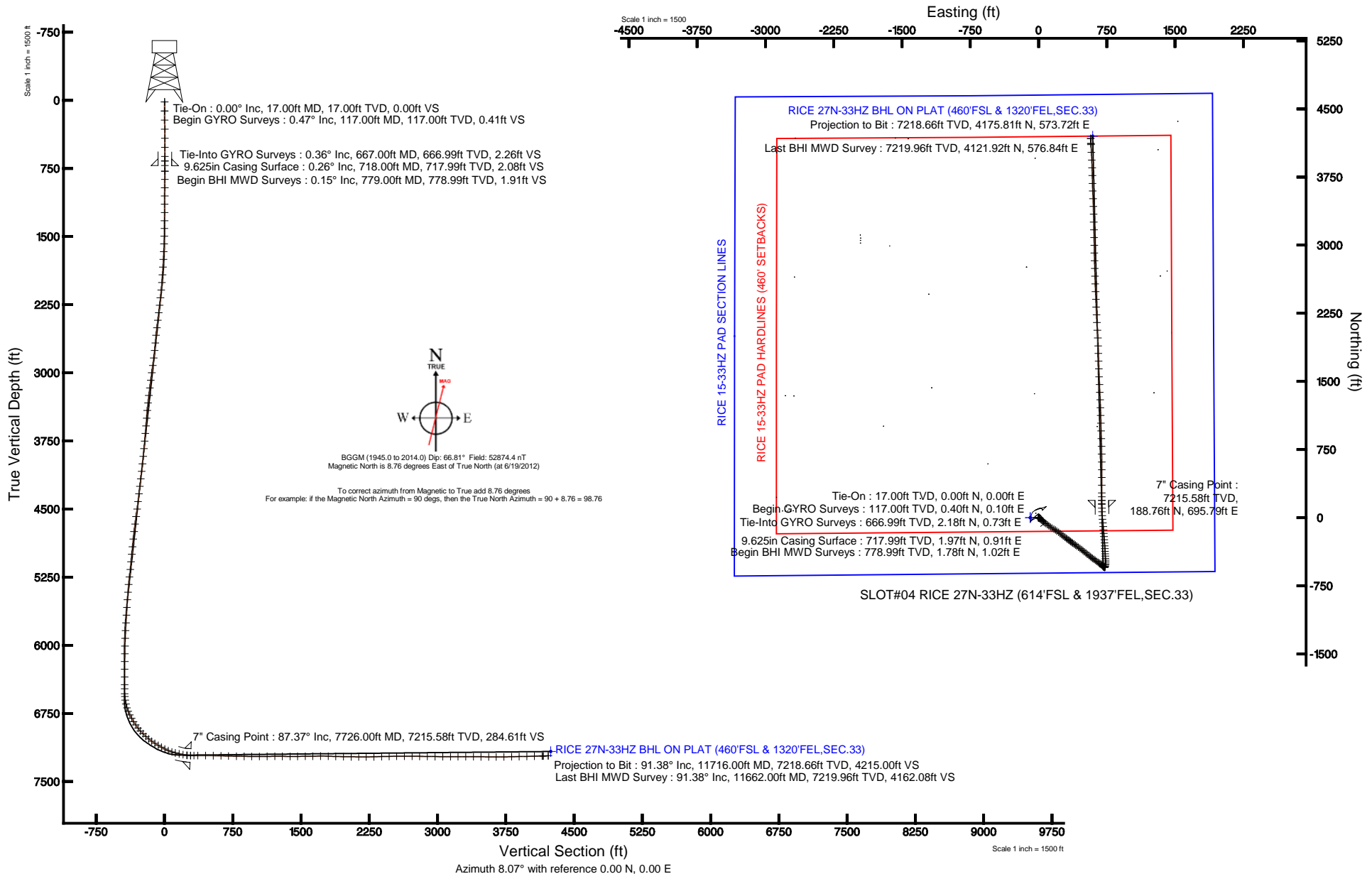


KERR-MCGEE OIL & GAS ONSHORE LP

Location: COLORADO Slot: SLOT#04 RICE 27N-33HZ (614'FSL & 1937'FEL,SEC.33)
 Field: WELD COUNTY (KERR MCGEE) Well: RICE 27N-33HZ
 Facility: SEC.33-T3N-R66W Wellbore: RICE 27N-33HZ PWB

Plot reference wellpath is RICE 27N-33HZ (REV-D.0) PWP

True vertical depths are referenced to XTREME 8 (RKB)	Grid System: NAD83 / Lambert Colorado SP, Northern Zone (501), US feet
Measured depths are referenced to XTREME 8 (RKB)	North Reference: True north
XTREME 8 (RKB) to Mean Sea Level: 4958 feet	Scale: True distance
Mean Sea Level to Mud line (At Slot: SLOT#04 RICE 27N-33HZ (614'FSL & 1937'FEL,SEC.33)): 0 feet	Depths are in feet
Coordinates are in feet referenced to Slot	Created by: wiljeff02 on 6/21/2012





Actual Wellpath Report

RICE 27N-33HZ AWP

Page 1 of 7



REFERENCE WELLPATH IDENTIFICATION			
Operator	KERR-MCGEE OIL & GAS ONSHORE LP	Slot	SLOT#04 RICE 27N-33HZ (614'FSL & 1937'FEL,SEC.33)
Area	COLORADO	Well	RICE 27N-33HZ
Field	WELD COUNTY (KERR MCGEE)	Wellbore	RICE 27N-33HZ AWB
Facility	SEC.33-T3N-R66W		

REPORT SETUP INFORMATION			
Projection System	NAD83 / Lambert Colorado SP, Northern Zone (501), US feet	Software System	WellArchitect® 3.0.2
North Reference	True	User	Wilsjef02
Scale	0.999958	Report Generated	6/21/2012 at 13:27:01
Convergence at slot	0.47° East	Database/Source file	WellArchitectDB/RICE_27N-33HZ_AWB.xml

WELLPATH LOCATION						
	Local coordinates		Grid coordinates		Geographic coordinates	
	North[ft]	East[ft]	Easting[US ft]	Northing[US ft]	Latitude	Longitude
Slot Location	0.81	89.97	3201279.84	1307761.22	40°10'33.442"N	104°46'46.816"W
Facility Reference Pt			3201189.88	1307759.68	40°10'33.434"N	104°46'47.975"W
Field Reference Pt			3197771.84	1268891.29	40°04'09.600"N	104°47'36.000"W

WELLPATH DATUM			
Calculation method	Minimum curvature	XTREME 8 (RKB) to Facility Vertical Datum	4958.00ft
Horizontal Reference Pt	Slot	XTREME 8 (RKB) to Mean Sea Level	4958.00ft
Vertical Reference Pt	XTREME 8 (RKB)	XTREME 8 (RKB) to Mud Line at Slot (SLOT#04 RICE 27N-33HZ (614'FSL & 1937'FEL,SEC.33))	4958.00ft
MD Reference Pt	XTREME 8 (RKB)	Section Origin	N 0.00, E 0.00 ft
Field Vertical Reference	Mean Sea Level	Section Azimuth	7.82°



Actual Wellpath Report

RICE 27N-33HZ AWP

Page 2 of 7



REFERENCE WELLPATH IDENTIFICATION				
Operator	KERR-MCGEE OIL & GAS ONSHORE LP		Slot	SLOT#04 RICE 27N-33HZ (614'FSL & 1937'FEL,SEC.33)
Area	COLORADO		Well	RICE 27N-33HZ
Field	WELD COUNTY (KERR MCGEE)		Wellbore	RICE 27N-33HZ AWB
Facility	SEC.33-T3N-R66W			

WELLPATH DATA (155 stations) † = interpolated/extrapolated station										
MD [ft]	Inclination [°]	Azimuth [°]	TVD [ft]	Vert Sect [ft]	North [ft]	East [ft]	Latitude	Longitude	DLS [°/100ft]	Comments
0.00†	0.000	13.870	0.00	0.00	0.00	0.00	40°10'33.442"N	104°46'46.816"W	0.00	
17.00	0.000	13.870	17.00	0.00	0.00	0.00	40°10'33.442"N	104°46'46.816"W	0.00	Tie-On
117.00	0.470	13.870	117.00	0.41	0.40	0.10	40°10'33.446"N	104°46'46.815"W	0.47	Begin GYRO Surveys
217.00	0.450	328.970	217.00	1.12	1.13	-0.01	40°10'33.453"N	104°46'46.816"W	0.35	
317.00	0.490	43.440	316.99	1.77	1.78	0.09	40°10'33.460"N	104°46'46.815"W	0.57	
417.00	0.440	20.110	416.99	2.50	2.45	0.51	40°10'33.466"N	104°46'46.809"W	0.19	
517.00	0.210	191.000	516.99	2.69	2.63	0.61	40°10'33.468"N	104°46'46.808"W	0.65	
617.00	0.130	163.600	616.99	2.40	2.34	0.61	40°10'33.465"N	104°46'46.808"W	0.11	
667.00	0.360	136.170	666.99	2.25	2.18	0.73	40°10'33.463"N	104°46'46.807"W	0.50	Tie-Into GYRO Surveys
779.00	0.150	160.740	778.99	1.91	1.78	1.02	40°10'33.460"N	104°46'46.803"W	0.21	Begin BHI MWD Surveys
870.00	0.180	89.180	869.99	1.82	1.67	1.20	40°10'33.459"N	104°46'46.800"W	0.21	
962.00	0.250	154.170	961.99	1.68	1.49	1.44	40°10'33.457"N	104°46'46.797"W	0.26	
1052.00	0.460	179.640	1051.98	1.15	0.96	1.52	40°10'33.451"N	104°46'46.796"W	0.29	
1143.00	0.430	182.740	1142.98	0.45	0.25	1.51	40°10'33.444"N	104°46'46.797"W	0.04	
1234.00	0.510	197.870	1233.98	-0.29	-0.48	1.37	40°10'33.437"N	104°46'46.798"W	0.16	
1324.00	0.490	214.050	1323.98	-1.03	-1.18	1.03	40°10'33.430"N	104°46'46.803"W	0.16	
1411.00	1.370	126.660	1410.97	-1.86	-2.11	1.66	40°10'33.421"N	104°46'46.795"W	1.65	
1495.00	2.960	123.130	1494.90	-3.27	-3.89	4.28	40°10'33.404"N	104°46'46.761"W	1.90	
1581.00	4.390	125.240	1580.72	-5.74	-7.00	8.83	40°10'33.373"N	104°46'46.702"W	1.67	
1666.00	5.080	130.530	1665.43	-9.27	-11.33	14.35	40°10'33.330"N	104°46'46.631"W	0.96	
1751.00	6.230	126.290	1750.02	-13.50	-16.50	20.92	40°10'33.279"N	104°46'46.546"W	1.44	
1837.00	7.040	129.080	1835.44	-18.46	-22.59	28.78	40°10'33.219"N	104°46'46.445"W	1.01	
1922.00	7.510	127.430	1919.76	-23.91	-29.25	37.23	40°10'33.153"N	104°46'46.336"W	0.61	
2008.00	7.200	131.490	2005.05	-29.67	-36.23	45.73	40°10'33.084"N	104°46'46.227"W	0.70	
2093.00	9.830	136.600	2089.11	-37.17	-45.04	54.71	40°10'32.997"N	104°46'46.111"W	3.22	
2178.00	11.820	128.010	2172.60	-46.09	-55.67	66.55	40°10'32.892"N	104°46'45.959"W	3.01	
2264.00	13.870	126.270	2256.44	-55.43	-67.19	81.81	40°10'32.778"N	104°46'45.762"W	2.43	
2349.00	14.080	126.720	2338.92	-65.28	-79.40	98.31	40°10'32.657"N	104°46'45.550"W	0.28	
2434.00	14.160	125.470	2421.36	-75.10	-91.62	115.06	40°10'32.537"N	104°46'45.334"W	0.37	
2520.00	14.660	126.460	2504.65	-85.20	-104.19	132.38	40°10'32.412"N	104°46'45.111"W	0.65	
2605.00	14.000	121.880	2587.01	-94.55	-116.01	149.76	40°10'32.296"N	104°46'44.887"W	1.54	
2691.00	14.520	119.860	2670.36	-102.83	-126.87	167.95	40°10'32.188"N	104°46'44.652"W	0.84	
2776.00	13.540	122.450	2752.82	-110.98	-137.52	185.59	40°10'32.083"N	104°46'44.425"W	1.37	
2861.00	14.580	125.020	2835.28	-120.01	-149.00	202.74	40°10'31.970"N	104°46'44.204"W	1.43	
2947.00	15.410	127.760	2918.35	-130.66	-162.21	220.64	40°10'31.839"N	104°46'43.974"W	1.27	
3032.00	15.620	128.750	3000.25	-142.18	-176.28	238.50	40°10'31.700"N	104°46'43.744"W	0.40	
3117.00	14.550	128.260	3082.32	-153.47	-190.06	255.81	40°10'31.564"N	104°46'43.521"W	1.27	
3203.00	13.980	127.280	3165.67	-164.05	-203.04	272.55	40°10'31.436"N	104°46'43.305"W	0.72	
3289.00	13.610	129.370	3249.19	-174.45	-215.75	288.64	40°10'31.310"N	104°46'43.098"W	0.72	
3374.00	12.450	125.990	3332.00	-184.01	-227.48	303.79	40°10'31.194"N	104°46'42.902"W	1.63	
3459.00	10.990	127.680	3415.23	-192.37	-237.82	317.61	40°10'31.092"N	104°46'42.724"W	1.76	
3545.00	10.010	122.170	3499.79	-199.53	-246.81	330.43	40°10'31.003"N	104°46'42.559"W	1.63	
3630.00	8.920	130.760	3583.63	-206.16	-255.04	341.67	40°10'30.922"N	104°46'42.414"W	2.10	
3715.00	9.760	131.620	3667.51	-213.75	-264.13	352.05	40°10'30.832"N	104°46'42.281"W	1.00	
3801.00	9.470	125.870	3752.30	-221.14	-273.12	363.23	40°10'30.743"N	104°46'42.137"W	1.17	



Actual Wellpath Report

RICE 27N-33HZ AWP

Page 3 of 7



REFERENCE WELLPATH IDENTIFICATION

Operator	KERR-MCGEE OIL & GAS ONSHORE LP	Slot	SLOT#04 RICE 27N-33HZ (614'FSL & 1937'FEL,SEC.33)
Area	COLORADO	Well	RICE 27N-33HZ
Field	WELD COUNTY (KERR MCGEE)	Wellbore	RICE 27N-33HZ AWB
Facility	SEC.33-T3N-R66W		

WELLPATH DATA (155 stations)

MD [ft]	Inclination [°]	Azimuth [°]	TVD [ft]	Vert Sect [ft]	North [ft]	East [ft]	Latitude	Longitude	DLS [°/100ft]	Comments
3886.00	11.440	123.190	3835.88	-228.04	-281.83	375.96	40°10'30.657"N	104°46'41.973"W	2.39	
3971.00	12.740	125.750	3919.00	-236.04	-291.92	390.62	40°10'30.557"N	104°46'41.784"W	1.65	
4057.00	12.620	126.090	4002.90	-244.93	-303.00	405.91	40°10'30.448"N	104°46'41.587"W	0.16	
4142.00	14.230	126.050	4085.58	-254.27	-314.61	421.86	40°10'30.333"N	104°46'41.381"W	1.89	
4228.00	14.710	124.990	4168.85	-264.25	-327.10	439.35	40°10'30.210"N	104°46'41.156"W	0.64	
4313.00	14.290	125.300	4251.14	-274.02	-339.35	456.75	40°10'30.089"N	104°46'40.932"W	0.50	
4398.00	13.550	126.830	4333.64	-283.69	-351.38	473.28	40°10'29.970"N	104°46'40.719"W	0.97	
4484.00	13.550	128.750	4417.25	-293.75	-363.72	489.20	40°10'29.848"N	104°46'40.514"W	0.52	
4569.00	14.210	130.980	4499.77	-304.58	-376.80	504.85	40°10'29.718"N	104°46'40.312"W	1.00	
4654.00	14.220	130.260	4582.17	-315.88	-390.39	520.69	40°10'29.584"N	104°46'40.108"W	0.21	
4740.00	14.580	128.890	4665.46	-327.13	-404.01	537.18	40°10'29.450"N	104°46'39.896"W	0.58	
4825.00	14.210	129.060	4747.79	-338.06	-417.30	553.60	40°10'29.318"N	104°46'39.684"W	0.44	
4910.00	11.340	128.080	4830.68	-347.69	-429.03	568.29	40°10'29.202"N	104°46'39.495"W	3.39	
4996.00	10.890	127.110	4915.07	-355.92	-439.15	581.42	40°10'29.102"N	104°46'39.326"W	0.57	
5081.00	11.590	125.430	4998.44	-363.81	-448.94	594.78	40°10'29.005"N	104°46'39.154"W	0.91	
5166.00	12.250	123.590	5081.61	-371.68	-458.88	609.25	40°10'28.907"N	104°46'38.967"W	0.90	
5252.00	13.040	126.870	5165.52	-380.36	-469.75	624.61	40°10'28.800"N	104°46'38.769"W	1.24	
5337.00	13.060	127.170	5248.32	-389.72	-481.31	639.94	40°10'28.686"N	104°46'38.572"W	0.08	
5423.00	10.830	127.770	5332.46	-398.52	-492.13	654.07	40°10'28.579"N	104°46'38.390"W	2.60	
5508.00	9.320	125.080	5416.14	-405.66	-500.97	666.01	40°10'28.491"N	104°46'38.236"W	1.86	
5593.00	8.980	124.330	5500.06	-411.77	-508.67	677.12	40°10'28.415"N	104°46'38.093"W	0.42	
5678.00	7.600	127.150	5584.17	-417.49	-515.81	687.08	40°10'28.345"N	104°46'37.965"W	1.69	
5764.00	6.490	130.330	5669.52	-422.88	-522.39	695.32	40°10'28.280"N	104°46'37.859"W	1.37	
5849.00	5.500	135.330	5754.06	-427.94	-528.39	701.85	40°10'28.220"N	104°46'37.774"W	1.32	
5934.00	4.790	134.850	5838.71	-432.56	-533.79	707.23	40°10'28.167"N	104°46'37.705"W	0.84	
6019.00	3.860	135.300	5923.47	-436.44	-538.33	711.76	40°10'28.122"N	104°46'37.647"W	1.09	
6105.00	2.340	136.600	6009.34	-439.30	-541.66	715.00	40°10'28.089"N	104°46'37.605"W	1.77	
6190.00	1.480	129.090	6094.29	-440.96	-543.62	717.04	40°10'28.070"N	104°46'37.579"W	1.05	
6275.00	1.160	110.910	6179.27	-441.72	-544.61	718.70	40°10'28.060"N	104°46'37.557"W	0.62	
6361.00	1.510	109.880	6265.25	-442.16	-545.31	720.58	40°10'28.053"N	104°46'37.533"W	0.41	
6446.00	1.980	108.870	6350.21	-442.67	-546.17	723.02	40°10'28.045"N	104°46'37.502"W	0.55	
6531.00	2.100	96.050	6435.16	-442.90	-546.81	725.96	40°10'28.038"N	104°46'37.464"W	0.55	
6577.00	2.100	87.850	6481.13	-442.73	-546.86	727.64	40°10'28.038"N	104°46'37.442"W	0.65	
6630.00	1.860	69.880	6534.09	-442.16	-546.53	729.42	40°10'28.041"N	104°46'37.419"W	1.25	
6660.00	3.600	32.450	6564.06	-441.08	-545.57	730.38	40°10'28.051"N	104°46'37.407"W	8.02	
6702.00	8.280	17.510	6605.83	-436.89	-541.57	732.00	40°10'28.090"N	104°46'37.386"W	11.64	
6745.00	13.210	14.720	6648.06	-428.96	-533.86	734.18	40°10'28.166"N	104°46'37.358"W	11.53	
6788.00	17.580	8.080	6689.51	-417.58	-522.67	736.34	40°10'28.277"N	104°46'37.330"W	10.94	
6830.00	22.360	3.760	6728.97	-403.26	-508.41	737.76	40°10'28.418"N	104°46'37.312"W	11.90	
6873.00	26.360	358.600	6768.14	-385.67	-490.70	738.06	40°10'28.593"N	104°46'37.308"W	10.53	
6916.00	29.450	356.560	6806.14	-365.88	-470.60	737.19	40°10'28.791"N	104°46'37.319"W	7.52	
6958.00	32.290	356.770	6842.19	-344.73	-449.09	735.94	40°10'29.004"N	104°46'37.335"W	6.77	
7001.00	35.210	357.170	6877.94	-321.27	-425.23	734.68	40°10'29.240"N	104°46'37.351"W	6.81	
7044.00	38.390	357.010	6912.36	-295.97	-399.51	733.37	40°10'29.494"N	104°46'37.368"W	7.40	
7086.00	41.820	356.910	6944.48	-269.40	-372.50	731.94	40°10'29.761"N	104°46'37.387"W	8.17	



Actual Wellpath Report

RICE 27N-33HZ AWP

Page 4 of 7



REFERENCE WELLPATH IDENTIFICATION

Operator	KERR-MCGEE OIL & GAS ONSHORE LP	Slot	SLOT#04 RICE 27N-33HZ (614'FSL & 1937'FEL,SEC.33)
Area	COLORADO	Well	RICE 27N-33HZ
Field	WELD COUNTY (KERR MCGEE)	Wellbore	RICE 27N-33HZ AWB
Facility	SEC.33-T3N-R66W		

WELLPATH DATA (155 stations) † = interpolated/extrapolated station

MD [ft]	Inclination [°]	Azimuth [°]	TVD [ft]	Vert Sect [ft]	North [ft]	East [ft]	Latitude	Longitude	DLS [°/100ft]	Comments
7129.00	44.530	356.350	6975.84	-240.55	-343.13	730.20	40°10'30.051"N	104°46'37.409"W	6.36	
7172.00	48.640	355.470	7005.38	-209.99	-311.98	727.97	40°10'30.359"N	104°46'37.438"W	9.67	
7214.00	51.240	355.640	7032.41	-178.58	-279.93	725.48	40°10'30.676"N	104°46'37.470"W	6.20	
7257.00	55.680	355.510	7058.01	-144.83	-245.50	722.81	40°10'31.016"N	104°46'37.504"W	10.33	
7299.00	59.150	355.780	7080.62	-110.24	-210.22	720.13	40°10'31.365"N	104°46'37.539"W	8.28	
7342.00	59.930	355.290	7102.42	-74.03	-173.26	717.24	40°10'31.730"N	104°46'37.576"W	2.06	
7385.00	61.530	356.870	7123.45	-37.30	-135.85	714.68	40°10'32.099"N	104°46'37.609"W	4.91	
7427.00	63.420	355.360	7142.86	-0.84	-98.69	712.15	40°10'32.467"N	104°46'37.642"W	5.51	
7470.00	67.500	354.220	7160.71	37.26	-59.74	708.60	40°10'32.852"N	104°46'37.687"W	9.79	
7513.00	72.250	353.820	7175.50	76.46	-19.60	704.39	40°10'33.248"N	104°46'37.742"W	11.08	
7555.00	76.090	355.740	7186.96	115.81	20.63	700.72	40°10'33.646"N	104°46'37.789"W	10.15	
7598.00	76.710	358.480	7197.07	156.88	62.37	698.61	40°10'34.058"N	104°46'37.816"W	6.36	
7641.00	78.840	358.480	7206.18	198.34	104.37	697.50	40°10'34.473"N	104°46'37.830"W	4.95	
7683.00	84.230	358.760	7212.36	239.33	145.89	696.50	40°10'34.884"N	104°46'37.843"W	12.85	
7691.00	84.620	358.730	7213.13	247.20	153.85	696.33	40°10'34.962"N	104°46'37.845"W	4.89	
7726.00†	87.368	359.503	7215.58	281.70	188.76	695.79	40°10'35.307"N	104°46'37.852"W	8.15	7" Casing Point
7765.00	90.430	0.360	7216.33	320.32	227.74	695.74	40°10'35.692"N	104°46'37.853"W	8.15	
7808.00	91.010	0.160	7215.79	362.95	270.74	695.94	40°10'36.117"N	104°46'37.850"W	1.43	
7893.00	89.440	0.010	7215.45	447.17	355.74	696.06	40°10'36.957"N	104°46'37.849"W	1.86	
7978.00	88.860	0.080	7216.71	531.38	440.73	696.13	40°10'37.797"N	104°46'37.848"W	0.69	
8064.00	88.330	359.220	7218.82	616.48	526.70	695.60	40°10'38.647"N	104°46'37.855"W	1.17	
8149.00	88.510	0.430	7221.17	700.62	611.66	695.34	40°10'39.486"N	104°46'37.858"W	1.44	
8237.00	89.070	358.930	7223.03	787.71	699.64	694.85	40°10'40.356"N	104°46'37.864"W	1.82	
8322.00	89.320	358.520	7224.22	871.63	784.61	692.96	40°10'41.195"N	104°46'37.888"W	0.56	
8407.00	89.600	357.980	7225.02	955.44	869.57	690.37	40°10'42.035"N	104°46'37.922"W	0.72	
8493.00	90.430	358.650	7225.00	1040.26	955.53	687.84	40°10'42.884"N	104°46'37.954"W	1.24	
8578.00	89.910	358.640	7224.75	1124.17	1040.50	685.83	40°10'43.724"N	104°46'37.980"W	0.61	
8663.00	90.900	359.160	7224.15	1208.14	1125.48	684.20	40°10'44.564"N	104°46'38.001"W	1.32	
8748.00	89.070	357.670	7224.17	1291.99	1210.45	681.85	40°10'45.404"N	104°46'38.032"W	2.78	
8834.00	89.690	357.260	7225.10	1376.58	1296.36	678.04	40°10'46.253"N	104°46'38.080"W	0.86	
8919.00	90.680	357.370	7224.82	1460.15	1381.26	674.06	40°10'47.092"N	104°46'38.132"W	1.17	
9004.00	90.580	357.900	7223.89	1543.81	1466.18	670.55	40°10'47.931"N	104°46'38.177"W	0.63	
9089.00	90.770	357.280	7222.89	1627.45	1551.10	666.98	40°10'48.770"N	104°46'38.223"W	0.76	
9175.00	90.840	358.580	7221.68	1712.16	1637.04	663.87	40°10'49.619"N	104°46'38.263"W	1.51	
9260.00	87.780	357.990	7222.70	1795.97	1721.98	661.33	40°10'50.459"N	104°46'38.296"W	3.67	
9345.00	88.630	359.170	7225.37	1879.82	1806.91	659.22	40°10'51.298"N	104°46'38.323"W	1.71	
9430.00	88.240	357.590	7227.69	1963.64	1891.84	656.82	40°10'52.137"N	104°46'38.354"W	1.91	
9516.00	89.720	356.690	7229.22	2048.13	1977.72	652.53	40°10'52.986"N	104°46'38.409"W	2.01	
9601.00	89.280	356.180	7229.96	2131.45	2062.55	647.25	40°10'53.824"N	104°46'38.477"W	0.79	
9686.00	90.180	357.090	7230.36	2214.84	2147.40	642.26	40°10'54.663"N	104°46'38.541"W	1.51	
9771.00	91.200	357.190	7229.34	2298.35	2232.29	638.02	40°10'55.501"N	104°46'38.596"W	1.21	
9857.00	91.930	358.050	7226.99	2382.96	2318.18	634.45	40°10'56.350"N	104°46'38.642"W	1.31	
9942.00	91.200	357.500	7224.67	2466.63	2403.08	631.15	40°10'57.189"N	104°46'38.684"W	1.08	
10027.00	90.550	357.170	7223.37	2550.20	2487.98	627.20	40°10'58.028"N	104°46'38.735"W	0.86	
10113.00	90.330	358.640	7222.71	2634.91	2573.92	624.05	40°10'58.877"N	104°46'38.776"W	1.73	



Actual Wellpath Report

RICE 27N-33HZ AWP

Page 5 of 7



REFERENCE WELLPATH IDENTIFICATION				
Operator	KERR-MCGEE OIL & GAS ONSHORE LP		Slot	SLOT#04 RICE 27N-33HZ (614'FSL & 1937'FEL,SEC.33)
Area	COLORADO		Well	RICE 27N-33HZ
Field	WELD COUNTY (KERR MCGEE)		Wellbore	RICE 27N-33HZ AWB
Facility	SEC.33-T3N-R66W			

WELLPATH DATA (155 stations)										
MD [ft]	Inclination [°]	Azimuth [°]	TVD [ft]	Vert Sect [ft]	North [ft]	East [ft]	Latitude	Longitude	DLS [°/100ft]	Comments
10198.00	89.220	358.250	7223.04	2718.77	2658.89	621.75	40°10'59.717"N	104°46'38.805"W	1.38	
10283.00	89.100	358.010	7224.29	2802.54	2743.83	618.97	40°11'00.556"N	104°46'38.841"W	0.32	
10369.00	88.850	358.420	7225.83	2887.32	2829.77	616.29	40°11'01.406"N	104°46'38.876"W	0.56	
10454.00	89.720	358.960	7226.89	2971.24	2914.74	614.35	40°11'02.245"N	104°46'38.901"W	1.20	
10539.00	89.350	359.230	7227.58	3055.25	2999.73	613.01	40°11'03.085"N	104°46'38.918"W	0.54	
10625.00	90.150	359.040	7227.95	3140.26	3085.72	611.71	40°11'03.935"N	104°46'38.934"W	0.96	
10710.00	89.960	358.410	7227.87	3224.19	3170.70	609.82	40°11'04.775"N	104°46'38.959"W	0.77	
10795.00	89.930	358.910	7227.95	3308.11	3255.67	607.83	40°11'05.615"N	104°46'38.984"W	0.59	
10881.00	89.380	358.560	7228.47	3393.03	3341.65	605.93	40°11'06.464"N	104°46'39.009"W	0.76	
10966.00	89.650	357.700	7229.19	3476.81	3426.60	603.16	40°11'07.304"N	104°46'39.045"W	1.06	
11051.00	89.410	358.470	7229.89	3560.58	3511.55	600.32	40°11'08.143"N	104°46'39.081"W	0.95	
11136.00	89.670	356.800	7230.57	3644.24	3596.47	596.81	40°11'08.982"N	104°46'39.126"W	1.99	
11221.00	90.640	358.960	7230.34	3727.95	3681.41	593.67	40°11'09.822"N	104°46'39.167"W	2.79	
11307.00	91.370	359.170	7228.83	3812.94	3767.38	592.26	40°11'10.671"N	104°46'39.185"W	0.88	
11392.00	91.360	357.640	7226.81	3896.76	3852.32	589.90	40°11'11.511"N	104°46'39.215"W	1.80	
11477.00	91.630	357.210	7224.59	3980.34	3937.21	586.08	40°11'12.349"N	104°46'39.264"W	0.60	
11563.00	91.390	357.350	7222.32	4064.86	4023.08	582.00	40°11'13.198"N	104°46'39.317"W	0.32	
11648.00	91.350	356.760	7220.29	4148.34	4107.95	577.64	40°11'14.037"N	104°46'39.373"W	0.70	
11662.00	91.380	356.690	7219.96	4162.07	4121.92	576.84	40°11'14.175"N	104°46'39.384"W	0.54	Last BHI MWD Survey
11716.00	91.380	356.690	7218.66	4215.04	4175.81	573.72	40°11'14.707"N	104°46'39.424"W	0.00	Projection to Bit

HOLE & CASING SECTIONS - Ref Wellbore: RICE 27N-33HZ AWB Ref Wellpath: RICE 27N-33HZ AWP									
String/Diameter	Start MD [ft]	End MD [ft]	Interval [ft]	Start TVD [ft]	End TVD [ft]	Start N/S [ft]	Start E/W [ft]	End N/S [ft]	End E/W [ft]
13.5in Open Hole	17.00	718.00	701.00	17.00	717.99	0.00	0.00	1.97	0.91
9.625in Casing Surface	17.00	718.00	701.00	17.00	717.99	0.00	0.00	1.97	0.91
8.75in Open Hole	718.00	7735.00	7017.00	717.99	7215.94	1.97	0.91	197.75	695.73
7in Casing Intermediate	17.00	7726.00	7709.00	17.00	7215.58	0.00	0.00	188.76	695.79
6.125in Open Hole	7726.00	11716.00	3990.00	7215.58	7218.66	188.76	695.79	4175.81	573.72



Actual Wellpath Report

RICE 27N-33HZ AWP

Page 6 of 7



REFERENCE WELLPATH IDENTIFICATION			
Operator	KERR-MCGEE OIL & GAS ONSHORE LP	Slot	SLOT#04 RICE 27N-33HZ (614'FSL & 1937'FEL,SEC.33)
Area	COLORADO	Well	RICE 27N-33HZ
Field	WELD COUNTY (KERR MCGEE)	Wellbore	RICE 27N-33HZ AWB
Facility	SEC.33-T3N-R66W		

TARGETS									
Name	MD [ft]	TVD [ft]	North [ft]	East [ft]	Grid East [US ft]	Grid North [US ft]	Latitude	Longitude	Shape
RICE 15-33HZ PAD SECTION LINES		0.00	-0.81	-89.97	3201189.88	1307759.68	40°10'33.434"N	104°46'47.975"W	polygon
RICE 27N-33HZ BHL ON PLAT (460'FSL & 1320'FEL,SEC.33)		7171.00	4201.07	595.97	3201841.63	1311966.81	40°11'14.957"N	104°46'39.137"W	point
RICE 15-33HZ PAD HARDLINES (460' SETBACKS)		7178.00	-0.81	-89.97	3201189.88	1307759.68	40°10'33.434"N	104°46'47.975"W	polygon

WELLPATH COMPOSITION - Ref Wellbore: RICE 27N-33HZ AWB Ref Wellpath: RICE 27N-33HZ AWP				
Start MD [ft]	End MD [ft]	Positional Uncertainty Model	Log Name/Comment	Wellbore
17.00	667.00	Generic gyro - continuous (Standard)	GYRODATA SURVEYS <117-667>	RICE 27N-33HZ AWB
667.00	7691.00	NaviTrak (Standard)	BHI MWD SURVEYS 8 3/4" HOLE <779-7691>	RICE 27N-33HZ AWB
7691.00	11662.00	NaviTrak (Standard)	BHI MWD SURVEYS 6 1/8" HOLE <7765-11662>	RICE 27N-33HZ AWB
11662.00	11716.00	Blind Drilling (std)	Projection to bit	RICE 27N-33HZ AWB



Actual Wellpath Report

RICE 27N-33HZ AWP

Page 7 of 7



REFERENCE WELLPATH IDENTIFICATION

Operator	KERR-MCGEE OIL & GAS ONSHORE LP	Slot	SLOT#04 RICE 27N-33HZ (614'FSL & 1937'FEL,SEC.33)
Area	COLORADO	Well	RICE 27N-33HZ
Field	WELD COUNTY (KERR MCGEE)	Wellbore	RICE 27N-33HZ AWB
Facility	SEC.33-T3N-R66W		

WELLPATH COMMENTS

MD [ft]	Inclination [°]	Azimuth [°]	TVD [ft]	Comment
17.00	0.000	13.870	17.00	Tie-On
117.00	0.470	13.870	117.00	Begin GYRO Surveys
667.00	0.360	136.170	666.99	Tie-Into GYRO Surveys
779.00	0.150	160.740	778.99	Begin BHI MWD Surveys
7726.00	87.368	359.503	7215.58	7" Casing Point
11662.00	91.380	356.690	7219.96	Last BHI MWD Survey
11716.00	91.380	356.690	7218.66	Projection to Bit